

广州市搏奥水切割技术有限公司
GUANGZHOU BOAO WATERJET TECH CO., LTD

**GUANGZHOU BOAO WATERJET TECH
SCHEME**

www.boaowaterjet.com

2012-02

CONTENTS

The first part: The brief introduction of the company	2
The second part: Some pictures about our products	3
The third part: The BOAO Machine Feature	4
The Four part: Cutting parameter	9
The five part: The technique trains with after-sales service	10
The Six Parts: Business item	11

The first part: The brief introduction of the company

Guangzhou BOAO Waterjet Tech. Co.,LTD. Located in Guangzhou city, Guangdong province. It is Hi-tech company professionally engaged in the research, development and manufacture of the Hi-pressure water cutter. It is the leader of Hi-tech waterjet technology in China. With an excellent parity of the price and efficiency, the machine has sold very well to many domestic cities and other countries in the world.

The second part: Some pictures about our products:

High Pressure Pump



CNC Controller System



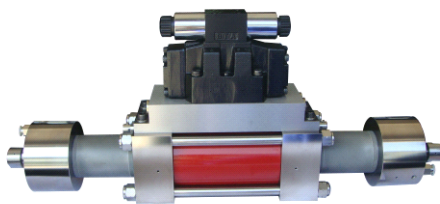
Gantry cutting table



Abrasive delivery system



Flow style intensifier



Flow style Attenuator



The third part: The BOAO Machine Feature

1. Technical Parameter about UHP PUMP SYSTEM

Parameter\Model	4000b	4000c
Max pressure(Mpa/Psi)	380/55,000	400/60,000
Working pressure(Mpa)	320-350	360-380
Orifice dia(mm)	0.30	0.33
Power(KW/HP)	30/40	37/50
L * W * H(M)	1.6*1.1*1.3	1.6*1.1*1.3
Cooling	Air	Air
Max water flow	3.7L/MIN	3.7L/MIN
Shift way	Electric shift	Electric shift

2. UHP Pump Feature

HIGH PRESSURE PUMP	1	Flow style intensifier imported from USA
	2	Flow style Attenuator let the High Pressure more stable, cutting faster
	3	The work pressure can arbitrarily move to regulate
	4	Oil temperature numerical gauge,too high automatically shut down
	5	Numerical HP Gauge
	6	Over pressure automatically shuts down function
	7	Equipped with Double Pressure Valve. The low pressure drills hole function and cut brittleness material no broken

3. Cutting Table Specification

Item Model	2014A	2515A	2517A	3015A	3017A	3020A	4020A
Structure	Gantry / Flying-Arm						
Cutting table Size(m)	2.2*1.6	2.7*1.6	2.7*2.0	3.2*1.6	3.2*2.0	3.2*2.2	4.2*2.2
Cutting Envelope(m)	2.0*1.4	2.5*1.4	2.5*1.7	3.0*1.5	3.0*1.7	3.0*2.0	4.0*2.0
Z-axis adjustment	120mm,manual						
Traverse speed	10m/min	10m/min	10m/min	10m/min	10m/min	10m/min	10m/min
CNC control	servo	servo	servo	servo	servo	servo	servo
Table Dimension(M)	2.9*2.3*1.8	3.5*2.3*1.8	3.5*2.8*1.8	4.3*2.3*1.8	4.3*2.8*1.8	4.3*3.0*1.8	5.3*3.0*1.8
Cutting Accuracy	±0.1mm	±0.1mm	±0.1mm	±0.1mm	±0.1mm	±0.1mm	±0.1mm
Re-position Accuracy	±0.05mm	±0.05mm	±0.05mm	±0.05mm	±0.05mm	±0.05mm	±0.05mm

4. Table Feature

Item	number	The main Feature
	1	Grantry structure makes the machine have good stability and rationality
	2	X Axis whole struture
	3	Stainless steel catcher tank and out Plate : No rusty
	8	ball bearing screw and linear guide, guarantees a high accuracy
	9	Special designed Cover guarantees a long using life of the Motion
	10	Lubricated system provides a simple and easy maintenance
	11	Repeat accuracy: 0.05 mm
	13	travel limit protects function
	14	Taiwan ABBA ball bearing screw
	15	Taiwan ABBA linear guide
	16	The operation is simple, convenient, easy to learn
	17	The horizontal beam is aluminum alloy manufacturing, guarantees a best stability and no shake or distortion ever with a high speed operation.
	18	X Axis and Y Axis drived with Japanese Yaskawa servo system, guarantee a high cutting accuracy, high speed , increase production
	19	X Axis ball screw no turn, its nut turns

5. Abrasive delivery system

Hang type abrasive box;

Automatically inhale abrasive;

Regulate the amount of abrasive;

Auto Abrasive Delivery System has the abrasive and delivery the abrasive to the bucket automatically the design shows BOAO continuous efficiency and reduce labor requirements.

6. HP ON/OFF VALVE

On/off Valve designed by the USA;

Air Actuated valve can carry out high pressure water sudden open and close, consumedly reduced Water back;

CNC assistance function to carry out the automatic control of the high pressure water;

Holding pressure adjustable, reduce the time of piercing;

Act intelligent credibility.



7. CUTTING HEAD

Imported DP2000 style cutting head

The American type Orifice Assembly;

From corrected function to reduce time of assemble;

Spare parts replaces very conveniently.

8. Controller System

Window XP waterjet software .The design is user-friendly;

Pc-base famous industrial computer,G-code style controller;

Simple electric design,PLC control;

Program synchronous sketch emulation, avoid processing a mistake;

Add up HP time;

Automatically control cutting inlet and outlet, automatic show the length of cutting trace for calculation cost, save operation time;

You can set X.Y axis travel sot spacing.Avoiding cutting head exceed the travel;

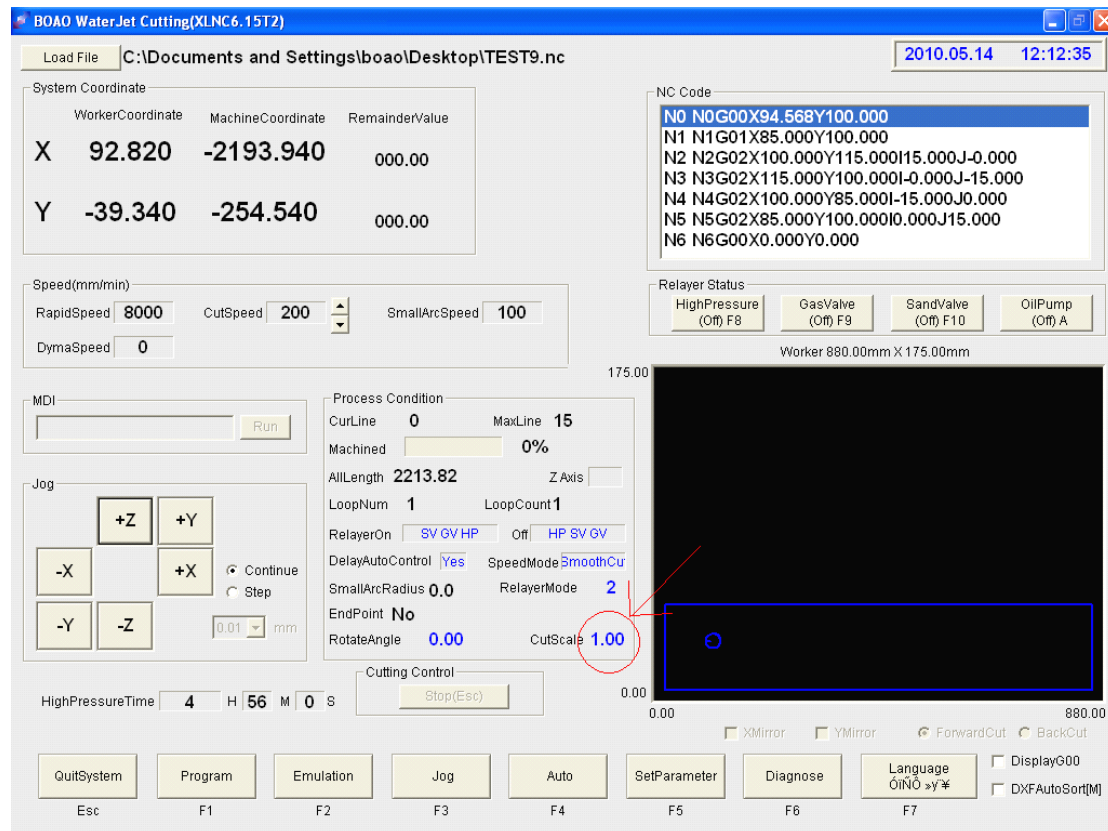
The small arc automatically decelerates function;

You can set the starting ferquency of the servomotor;

The system acan automatically generate the CNC processing program;

Commine AutoCAD drawing with technic data.Achive the communication between PC and CNC;

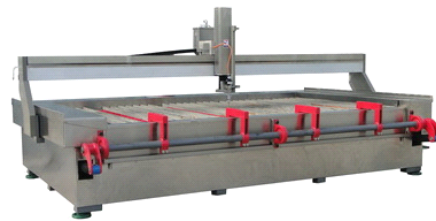
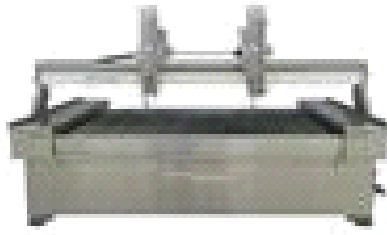
Receive the DXF file from the AUTCAD or draw sketch by oneself



Other Match Project-Call for pricing

9. TWO CUTTING HEAD

If the cutting work piece not big (is smaller than generally 600mm), also the batch many, the variety are few, also may choose the double cutting head or multi-tool bit cutting, enable a machine to have a higher efficiency, But the high tension system must use 37KW(50HP) or the horsepower bigger high tension system.



10. Hydraulic Loading Arm

Ensuring the safe and convenient loading and unloading of fragile material like glass onto and off the cutting table ,greatly reducing the incidence of accidental material damage and relieving the labor intension.

•Complex Profiles Produced

With a kerf width of less than 1mm almost any shape can be produced no matter how intricate.

•Easy Of Use

Simple to programme or download DXF files from existing software.

•Economy Of Cut

Very low cost per hour to run.

•Accuracy of Parts

Tolerances of ± 0.1 mm can be obtained.

The Four part: Cutting parameter

material	Thickness (mm)	Cutting speed (mm/min)
stainless steel	1	1300
	3	600
	6	300
	10	200
	16	120
	20	85
	30	40
	55	20
	65	10
copperplate	3	1500
	5	950
Aluminum plate	10	700
	20	500
	30	250
	70	70
Marble	20	1300
	30	700
Granite	20	1000
	30	700
Ceramic	10	1400
	28	400
Glass	6	1700
	10	800
	19	400
Foam	20	6000
	50	3000
	80	2000

The five part: The technique trains with after-sales service

1. The technique trains:

After customer purchases waterjet machine, BOAO company will carry on 1 week technique to train to the customer.

Training location: the buyer's factory

Training contents:

1、 The basic work principle of machine
2、 High pressure system and intensifier work principle
3、 The high pressure seal,the low pressure seal and high pressure spare parts replacement
4、 The maintenance of high pressure system and familiar troubleshooting
5、 CNC program
6、 CNC operation
7、 CNC Cutting table operation
8、 Daily maintenance of CNC Cutting table
9、 Main HP spare parts, On/off Valve, Cutting head principle、 The maintenance of them and troubleshooting
10、 Abrasive control and delivery system work principle and operation
11、 CAD/CAM software operation CNC connection
12、 Equipment installation
13、 Operate and cutting on the worksite
14、 Test

With the technique training and perfect teaching facilities, the customer most understand in a short time work principle and maintain method and operation method of waterjet.

2. aftersales service

- The Engineer come to install ,debugging the machine and training the buyer freely, the return freight from China to the buyer's country be paid by the seller, the room and board paid by buyer.
- The time of guarantee after check and accept the equipments is 12 months;
- Be the whole life responsible for maintain;
- Spare parts promise to supply over a long period of time;
- When there is new product with new technique, can enjoy special price to upgrade;
- Maintenance response time: In guarantee time, when the machine breaks down, within 24 hours after receive written notice. For the common breakdown, guide a customer by telephone, fax or E-mail to recover production as soon as possible. The customer operator make great efforts still can't work; we will arrive to the jobsite as soon as possible and help customer to resolve the problem.

The Six Parts: Business item

The water cutter choice mainly considers two major parts: The UHP pressure pump and the CNC cutting table. The compose of different UHP pressure pump and different cutting table, the price is different.

The price contains four parts: the UHP pressure pump, CNC cutting table, Controller system and Abrasive delivery system.

Date of delivery:

30 days from the day that the contract take effect (receive contract down payment)

Method of payment:

- a. Sign the contract, pays the contract total price of 30% be a down payment and the contract take effect.
- b. Pays 70% of the contract total price before the goods delivery.
- c. Ways of payment: Telegraphic Transfer

Quality guarantee:

The time of guarantee after delivery the equipments is 12 months (consume part doesn't belong to guarantee scope), free replace the spare parts which has a quality problem, but not follow "product manual", mistake's operating causable result doesn't belong to guarantee scope.

Contact person: Anny

Guangzhou BOAO Waterjet Tech Co., LTD

NO.20 Building Shilonggang Road, NO.2 Industrial area Dalong village, Shiji Town Panyu District Guangzhou

TEL: +86 020 39962923 FAX: +86 020 39962923

Mobile: +86 13711306357

Msn: lixiang1987@live.cn **Skype:** lixiang1987

Email: boaowaterjet@yahoo.com sfzzq@126.com

Website: www.boaowaterjet.com