

Function	GM8901	GM8901+	GM8909
Wind speed and wind temperature measurement	√	√	√
Air volume measurement	×	×	√
The maximum, minimum, average and current value display of wind speed	√	√	√
°C/°F temperature unit selection	√	√	√
Data retention	√	√	√
LCD backlight function	√	√	√
Manual / automatic shutdown	√	√	√
Five wind speed unit options (M/s, Km/h, ft/min, Knots, mph)	√	√	√
Beaufort Wind Rating	√	√	√
Wind chill reminder	√	√	√
Low voltage reminder	√	√	√
The handle rod is retractable	×	√	√

### Specification

#### ► Wind flow range (Only GM8909)

Unit	Range	Resolution	Area
CFM (FT <sup>3</sup> /MIN)	0~999900	0.1-100	0.001-9999
CMM(M <sup>3</sup> /MIN)	0~999900	0.1-100	0.001-9999

#### ► Wind Velocity Range

Unit	Wind Velocity	Threshold	Accuracy
m/s	0~45	0.3	±3% ±0.1dpts
ft/min	0~8800	60	±3% ±0.1dpts
knots	0~88	0.6	±3% ±0.1dpts
km/h	0~140	1	±3% ±0.1dpts
mph	0~100	0.7	±3% ±0.1dpts

#### ► Wind Temperature

Unit	Scale	Resolution	Accuracy
°C	0~45	0.2	±2
°F	32~113	0.36	±3.6

	GM8901	GM8901+	GM8909
Power supply	9V Battery	3*1.5V AAABatteries	3*1.5V AAA Batteries

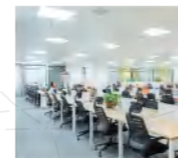
### Application



Outdoor



Factory



Office

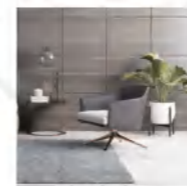


Home

### Function

- Wind chill indication
- Backlight display
- Beaufort scale
- Low battery indication
- °C/°F Temperature unit selection
- Manual/Auto power shut off
- Max/Average/Current air velocity measurement
- Five units of air velocity (M/s, Km/h, ft/min, Knots, mph)
- Air Velocity & Temperature Measurement

### Application



Home



School



Outdoor



Factory

### Specification

#### ► Air velocity

Unit	Range	Resolution	Threshold	Accuracy
M/s	0~30	0.1	0.1	±5%
ft/min	0~5860	19	39	
Knots	0~55	0.2	0.1	
Km/hr	0~90	0.3	0.3	
Mph	0~65	0.2	0.2	

#### ► Temperature

Unit	Range	Resolution	Accuracy
°C	-10°C~45°C	0.2	±2°C
°F	14°F~113°F	0.36	±3.6°F

	GM816	GM816A	GM8908
Thermometer	NTC thermometer		
Operating temperature	-10°C~45°C(14°F~113°F)		
Operating humidity	Less than 90%RH		
Store temperature	-40°C~60°C(-40°F~140°F)		
Battery	CR2032 3.0V	6F22 9V	CR2032 3.0V
Weight	52g	136g	58.9g
Dimension	40x18x105mm	160x52.5x35.5 mm	104.3x57.8x19.9mm



(GM8901)



(GM8901+)



(GM8909)



(GM8908)



(GM816)



(GM816A)