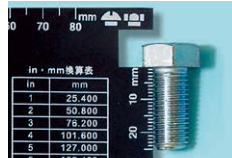
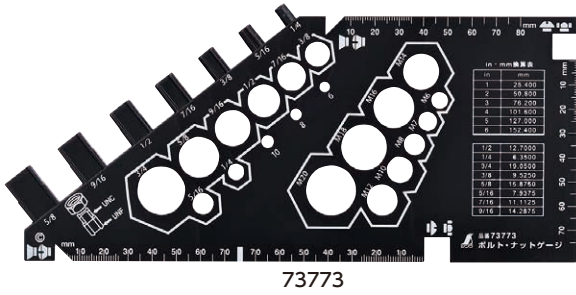


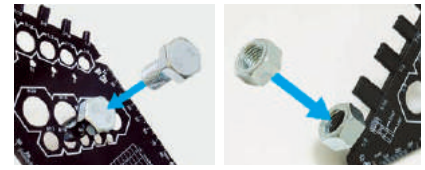
Bolt and Nut Gauge



Easily measures the length as well

Features

- Easily measure size of nut bolt just by putting on the gauge
- Measures different shapes of screws
- Inch/mm converting chart



Use

- For measuring size of bolt and nut

Specifications

Material	ABS resin
----------	-----------

Item Code	Description	Body Size (mm)	Weight (g)	JAN Code	Packing Unit	Packaging
73773	Bolt and Nut Gauge	107×237×6	55	4 960910 737730	10	SP

Feeler Gauge



Features

- Variety of different length and leaves available
- Comes with portable plastic case

Use

- For clearance gap measurement

Specifications

Item Code	73776	73780	73781	73782	73796	73797	
Thickness Tolerance*	Over 0.03 mm below 0.15 mm: ±0.005 mm Over 0.15 mm below 0.50 mm: ±0.012 mm Over 0.50 mm below 3.00 mm: ±0.020 mm						
Leaf Thickness (mm)	0.30 0.06 0.10	0.04 0.07 0.15	0.05 0.08 0.20	1.00 0.05 0.08 0.09 0.10 0.11 0.12 0.13 0.14 0.15 0.20 0.25 0.30 0.35 0.40 0.45 0.50 0.60 0.75 0.80 0.90	1.00 0.05 0.08 0.09 0.10 0.11 0.12 0.13 0.14 0.15 0.20 0.25 0.30 0.35 0.40 0.45 0.50 0.60 0.75 0.80 0.90	1.00 0.05 0.08 0.09 0.10 0.11 0.12 0.13 0.14 0.15 0.20 0.25 0.30 0.35 0.40 0.45 0.50 0.60 0.75 0.80 0.90	13
Leaf Material (mm)	13						
Material	Leaf: Carbon tool steel						

*Thickness tolerance is the tolerance for one leaf. In the case of use with multiple leaves, the tolerance is added together.

Item Code	Description	Body Size (mm)	Weight (g)	JAN Code	Packing Unit	Packaging
73776	A 75 mm 9 Leaves	81×13×5	20	4 960910 737761	10	SP
73780	B 100 mm 9 Leaves	109×13×5	27	4 960910 737808		
73781	C 150 mm 9 Leaves	156×13×5	40	4 960910 737815		
73782	D 65 mm 25 Leaves	70×13×15	63	4 960910 737822	5	SP
73796	E 100 mm 25 Leaves	105×13×15	95	4 960910 737969		
73797	F 150 mm 25 Leaves	153×13×15	140	4 960910 737976		

Digital Thickness Caliper



Features

- Digital display for quick reading
- Easy-to-read 12 mm character height LCD
- ZERO set switch gives a reference point and makes comparison measurement
- Large handle makes easy holding
- Auto power off function
- Special case included

Use

- For measuring thin objects such as cloth or leather

Specifications

Measuring Range	0 - 10 mm
Graduation	0.01 mm
Indication Error	±0.02 mm
Maximum Insert Depth	30 mm
Measuring Force	1.1 N or less
Parallelism between Gauge Head and Anvil	±8 μm
Diameter of Gauge Head and Anvil	10 mm
Use Environment	0 - 40°C
Power Source	1x silver oxide battery SR44 (Battery included is for trial use only and may not last as long)
Auto Power Off	Approximately 5 min.
Material	Body: ABS resin Lever: Iron Handle: Aluminum alloy Spindle, Gauge Head, Anvil: Stainless steel

Item Code	Description	Body Size (mm)	Weight (g)	JAN Code	Packing Unit	Packaging
73746	A 0.01 mm/10 mm with Handle	125×95×26	216	4 960910 737464	1	SP