



# LED Floodlight Catalog



[www.himel.com](http://www.himel.com)

We are determined to build a world where electricity is *safe and accessible* to one and all



Himel is a global manufacturer and supplier of electric products for Low Voltage Power Distribution, Final Distribution, Power Management, Motor Control and Protection, Industrial Components, and Home Electric offers.

**50+**  
countries served



**110+**  
distributors

**6,700+**  
resellers

**22,700+**  
products

With a footprint in 50+ countries—we are leaders in value-engineered electric products for residential, commercial, industrial, and utilities sectors. We value opportunities for all and provide the best combination of affordable and reliable offers to meet the demand for access to safe electricity.

**Low Voltage  
Power Distribution**



**Final  
Distribution**



**Power  
Management**



**Motor  
Control &  
Protection**



**Industrial  
Components**



**Home  
Electric**



Website



Instagram



Facebook



Youtube



LinkedIn



## LIGHTING

# LED Floodlight B2

Standard: IEC60598



### Benefits

LED Floodlight B2 has outstanding weatherproof performance which is ideal for outdoor lighting application. The Wear-resistant rubber cable is adopted to ensures electrical safety. The deep fin design on the back enhances heat dissipation.

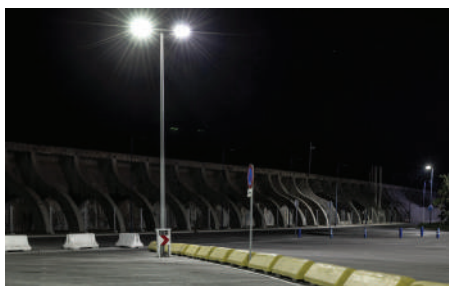
### Features

- ◆ Up to 90lm/w
- ◆ IP65 water and dust proof
- ◆ 4KV surge protection
- ◆ 30,000 hours lifetime
- ◆ Power factor: 0.9

### Selection Code

Range name	Power	CCT
<b>HHLFLB2</b>	<b>XXX</b>	<b>XX</b>
FLB2:Floodlight Basic 2	30: 30W 50: 50W 100: 100W 150: 150W 200: 200W	30: 3000K 40: 4000K 65: 6500K

### Applications



| Parking Area



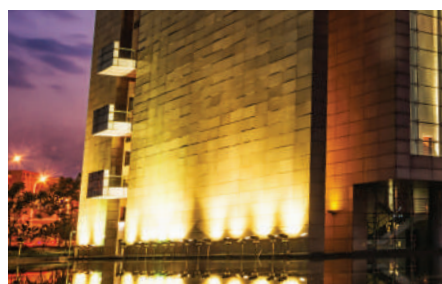
| Billboard



| Squares



| Landscape



| Architecture

## LIGHTING

# LED Floodlight B2

Standard: IEC60598



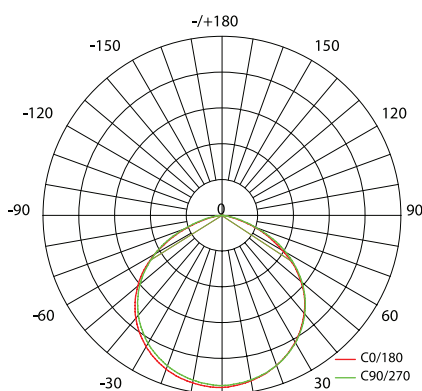
Excellent dissipation design  
**Robust & Durable**  
 Efficiently & Energy saving

### Specification

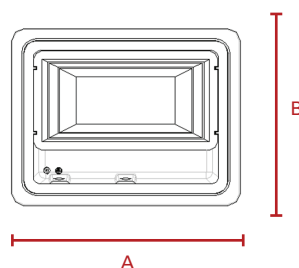
Commercial Reference	Power (W)	Efficacy (lm/W)	Lumen (lm)	CCT (K)	Average Lifetime
HHLFLB230W30	30	90	2700	3000	30Khrs
HHLFLB230W40	30	90	2700	4000	30Khrs
HHLFLB230W65	30	90	2700	6500	30Khrs
HHLFLB250W30	50	90	4500	3000	30Khrs
HHLFLB250W40	50	90	4500	4000	30Khrs
HHLFLB250W65	50	90	4500	6500	30Khrs
HHLFLB2100W30	100	90	9000	3000	30Khrs
HHLFLB2100W40	100	90	9000	4000	30Khrs
HHLFLB2100W65	100	90	9000	6500	30Khrs
HHLFLB2150W30	150	90	13500	3000	30Khrs
HHLFLB2150W40	150	90	13500	4000	30Khrs
HHLFLB2150W65	150	90	13500	6500	30Khrs
HHLFLB2200W30	200	85	17000	3000	30Khrs
HHLFLB2200W40	200	85	17000	4000	30Khrs
HHLFLB2200W65	200	85	17000	6500	30Khrs

Technical Specification	
CRI	Ra>=80
Voltage (V)	AC 220-240
Power factor	0.9
Dimmable	Non Dim
Housing Colour	ADC (Black)
IP	IP65
IK	IK06
Driver intergrated(Yes/No)	Yes
Input Frequency	50/60Hz

### Photometric Data



### Dimensions



Power	A (mm)	B (mm)
30W	160	120
50W	220	170
100W	280	230
150W	350	280
200W	350	280

Mechanical Properties	
Housing Material	Die-casting
Optical Material	Tempered glass

Application Condition	
Operating Temperature	-40~45°C
Storage Temperature	-40~65°C