

FSL



MOSQUITO BAT

Code:FSMK885

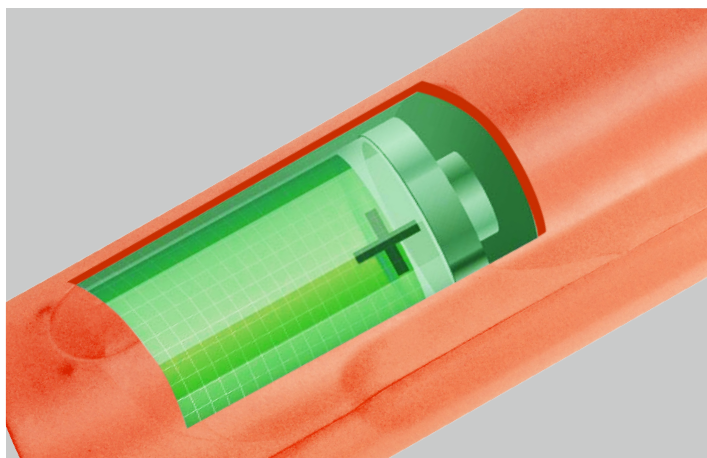




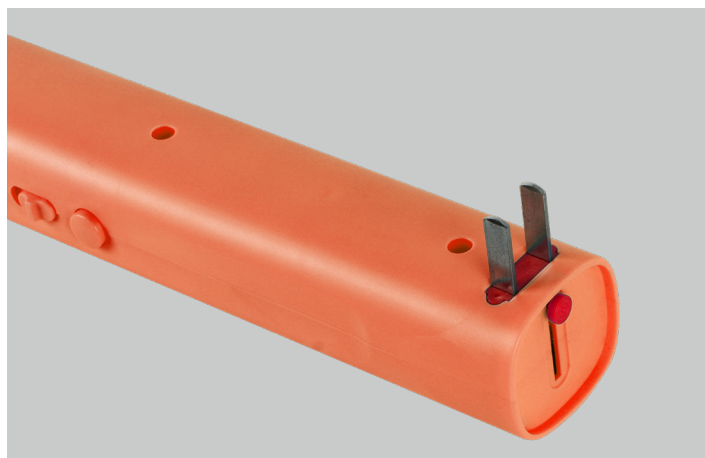
Three mesh layers
Safe mosquito elimination,



Dual-switch design, avoid misoperation.



Large-capacity battery,
long battery life.



Hidden retractable finger plug,
charging become more convenient
*Plug can be customized

Code	Voltage	Charging Time(hrs)	Size(mm)	Color	PCS/CTN
FSMK885	AC110-220V	6~8	502x35x212	Blue	60
FSMK885	AC110-220V	6~8	502x35x212	Pink	60
FSMK885	AC110-220V	6~8	502x35x212	Orange	60