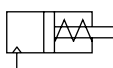


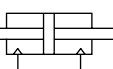
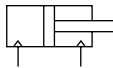


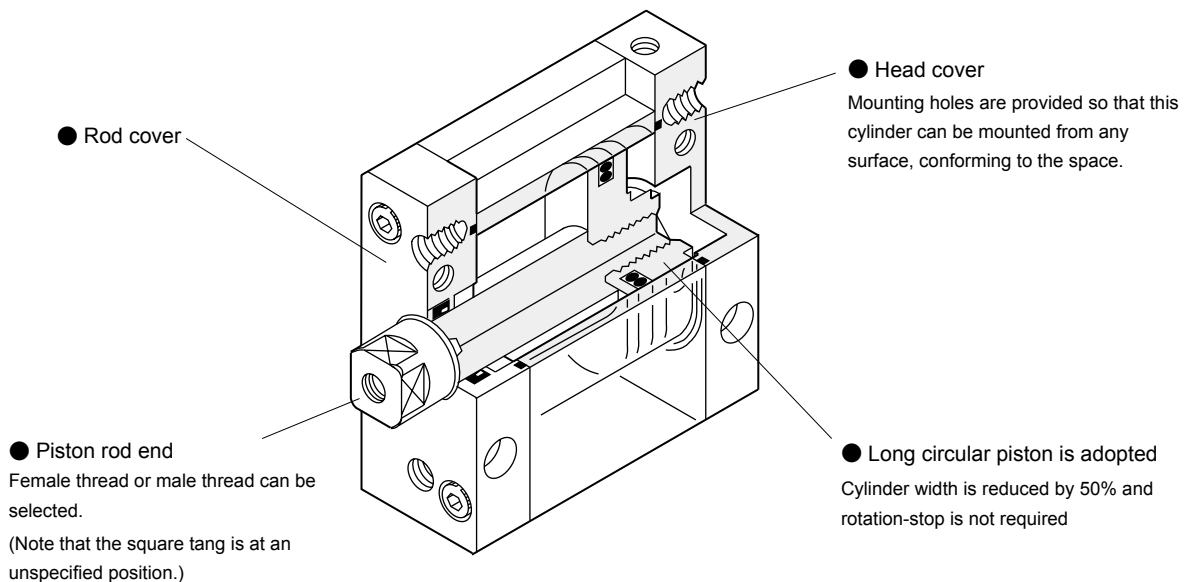
Series variation

Flat compact cylinder FC*Series

SCP*3
CMK2
CMA2
SCM
SCG
SCA2
SCS2
CKV2
CAV2/
COVPIN2
SSD2
SSG
SSD
CAT
MDC2
MVC
SMG
MSD/
MSDG
FC*
STK
SRL3
SRG3
SRM3
SRT3
MRL2
MRG2
SM-25
ShkAbs
FJ
FK
Spd
Contr
Ending

| Variation | Model No. JIS symbol | Bore size (mm) | Standard stroke length (mm) | | | | |
|---|--|--|-----------------------------|----|----|----|----|
| | | | 5 | 10 | 15 | 20 | 25 |
| Single acting/ push with switch | FCS FCS-L  | φ25 equivalent/ φ32 equivalent φ40 equivalent/φ50 equivalent/φ63 equivalent | ● | ● | | | |
| Single acting/pull with switch | FCH FCH-L  | φ25 equivalent/ φ32 equivalent φ40 equivalent/φ50 equivalent/φ63 equivalent | ● | ● | | | |
| Double acting/ single rod with switch | FCD FCD-L  | φ25 equivalent/ φ32 equivalent/ φ40 equivalent/ φ50 equivalent/ φ63 equivalent | ● | ● | ● | ● | ● |
| Double acting/ double rod with switch | FCD-D FCD-DL  | φ25 equivalent/ φ32 equivalent/ φ40 equivalent/ φ50 equivalent/ φ63 equivalent | ● | ● | ● | ● | ● |
| Double acting/ cushioned/with switch | FCD-K FCD-KL  | φ25 equivalent/ φ32 equivalent/ φ40 equivalent/ φ50 equivalent/ φ63 equivalent | ● | ● | ● | ● | ● |

Product introduction



●: Standard, ◎: Option, ◻: Not available

| | Min. stroke length (mm) | Custom stroke length (per mm) | | | | Max. stroke length (mm) | Option | | | | Switch | Page |
|--|-------------------------|-------------------------------|----|----|----|-------------------------|----------------------------|---------------------|-------------|----------------------|--------|------|
| | | | | | | | Piston rod material change | Rod end male thread | With spigot | Copper and PTFE free | | |
| | | | 30 | 40 | 50 | | M | N | R | P6 | | |
| | 1 | 1 | | | | 10 | ◎ | ◎ | ◎ | ◎ | ◎ | 1462 |
| | | | | | | 20 | ◎ | ◎ | ◎ | ◎ | ◎ | |
| | 1 | 1 | | | | 10 | ◎ | ◎ | ◎ | ◎ | ◎ | 1462 |
| | | | | | | 20 | ◎ | ◎ | ◎ | ◎ | ◎ | |
| | 1 | 1 | ● | ● | ● | 50 | ◎ | ◎ | ◎ | ◎ | ◎ | 1470 |
| | 1 | 1 | ● | ● | ● | 50 | ◎ | ◎ | ◎ | ◎ | ◎ | 1476 |
| | 1 | 1 | ● | ● | ● | 150 | ◎ | ◎ | ◎ | ◎ | ◎ | 1482 |

SCP*3

CMK2

CMA2

SCM

SCG

SCA2

SCS2

CKV2

CAV2/
COVP/N2

SSD2

SSG

SSD

CAT

MDC2

MVC

SMG

MSD/
MSDG

FC*

STK

SRL3

SRG3

SRM3

SRT3

MRL2

MRG2

SM-25

ShkAbs

FJ

FK

Spd
Contr

Ending

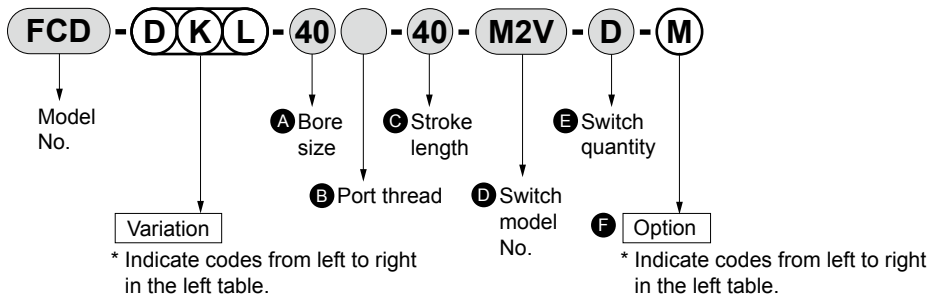
Variation and option combination selection table

- ⊙: Option
- : Available (custom order product)
- △: Available depending on conditions (Contact CKD.)
- ×: Not available

| Category | Code | Variation | | | | | | | Port thread | | Option | | | | |
|----------|-------------------------------------|-------------------|---|---|---|---|----|---|-------------|------|--------|---|-----|----|---|
| | | None | K | S | H | D | DK | L | NPT *1 | G *1 | M | N | N** | P6 | R |
| SSD | Double acting basic | Blank | | | | | | | ⊙ | ○ | ○ | ○ | ○ | ○ | ○ |
| SSD | Double acting with cushion | FCD-K | | × | × | ○ | × | ⊙ | ○ | ○ | ○ | ○ | ○ | ○ | ○ |
| CAT | Single acting push | FCS | | | × | × | × | ⊙ | ○ | ○ | ○ | ○ | ○ | ○ | ○ |
| MDC2 | Single acting pull | FCH | | | | × | × | ⊙ | ○ | ○ | ○ | ○ | ○ | ○ | ○ |
| MVC | Double acting double rod | FCD-D | | | | | | ⊙ | ○ | ○ | ○ | ○ | ○ | ○ | ○ |
| MVC | Double acting rod cushioned | FCD-DK | | | | | | ○ | ○ | ○ | ○ | ○ | ○ | ○ | ○ |
| SMG | With cylinder switch | L | | | | | | | ○ | ○ | ○ | ○ | ○ | ○ | ○ |
| MSD/MSDG | NPT *1 | N | | | | | | | | × | ○ | ○ | ○ | ○ | ○ |
| MSD/MSDG | G *1 | G | | | | | | | | | ○ | ○ | ○ | ○ | ○ |
| FC* | | | | | | | | | | | | | | | |
| STK | Piston rod material stainless steel | M | | | | | | | | | | ⊙ | ○ | ○ | ○ |
| STK | Piston rod end male thread | N | | | | | | | | | | | ○ | ⊙ | ⊙ |
| SRL3 | Specify piston rod end form | N** | | | | | | | | | | | | ○ | ○ |
| SRG3 | Copper and PTFE free | P6 | | | | | | | | | | | | | ○ |
| SRG3 | With spigot | R | | | | | | | | | | | | | ○ |
| SRM3 | | | | | | | | | | | | | | | |
| SRT3 | Cylinder switch | Listed separately | × | × | × | × | × | × | ⊙ | ○ | ○ | ○ | ○ | ○ | ○ |
| SRT3 | | | | | | | | | | | | | | | |

*1: Available only for φ40 and over

[Example of model No.]



Model No: Flat cylinder

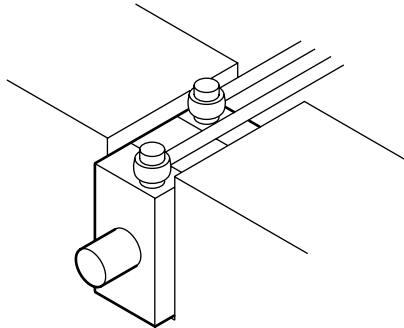
- Variation: Double rod/cushioned/with switch
- **A** Bore size : φ40 mm
- **B** Port thread : Rc thread
- **C** Stroke length : 40 mm
- **D** Switch model No. : Proximity M2V switch, lead wire 1 m
- **E** Switch quantity : 2
- **F** Option : Piston rod material (stainless steel)

| |
|------------------|
| SCP*3 |
| CMK2 |
| CMA2 |
| SCM |
| SCG |
| SCA2 |
| SCS2 |
| CKV2 |
| CAV2/ COVP/N2 |
| SSD2 |
| SSG |
| SSD |
| CAT |
| MDC2 |
| MVC |
| SMG |
| MSD/ MSDG |
| FC* |
| STK |
| SRL3 |
| SRG3 |
| SRM3 |
| SRT3 |
| MRL2 |
| MRG2 |
| SM-25 |
| ShkAbs |
| FJ |
| FK |
| Spd Contr |
| Ending |

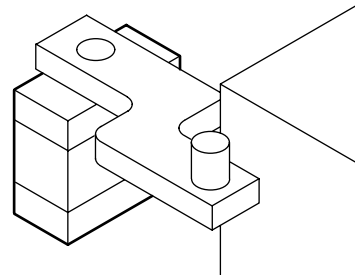
Applications

Conventionally impossible automatization of various applications has been achieved

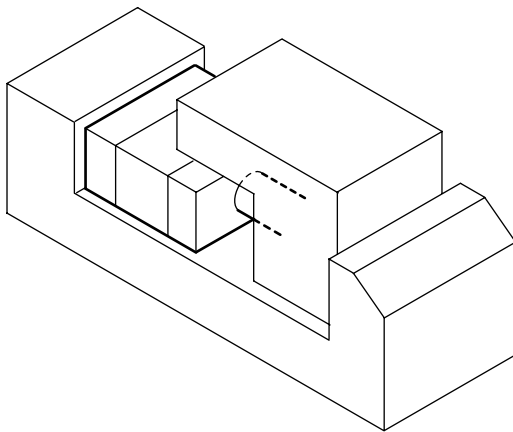
● Installation in a small space



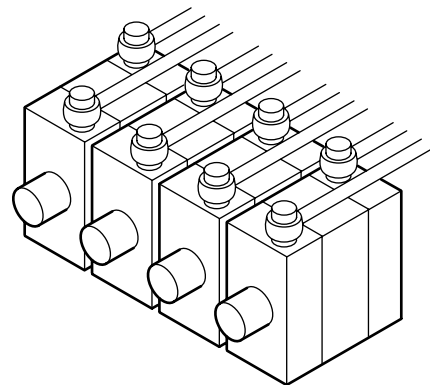
● Positioning when there is an obstacle (rotation-stop function)



● Clamp



● Can be used in parallel



| |
|------------------|
| SCP*3 |
| CMK2 |
| CMA2 |
| SCM |
| SCG |
| SCA2 |
| SCS2 |
| CKV2 |
| CAV2/ COVPIN2 |
| SSD2 |
| SSG |
| SSD |
| CAT |
| MDC2 |
| MVC |
| SMG |
| MSD/ MSDG |
| FC* |
| STK |
| SRL3 |
| SRG3 |
| SRM3 |
| SRT3 |
| MRL2 |
| MRG2 |
| SM-25 |
| ShkAbs |
| FJ |
| FK |
| Spd Contr |
| Ending |