



Pilot kick 2-port solenoid valve
(general purpose valve)

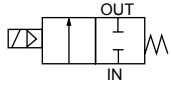
ADK11-W Series

- NC
- Port size: Rc1/2 to Rc1
- Diaphragm drive

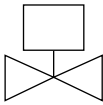
RoHS

JIS symbol

- ADK11: NC



Mounting orientation



Common specifications

Descriptions	Standard specifications
Working fluid	Air/low vacuum (1.33×10^3 Pa (abs))/water/kerosene/oil (50 mm ² /s or less)
Working pressure differential MPa	0 to 1.0 (Refer to max. operating pressure differential in individual specifications.)
Max. working pressure MPa	2
Proof pressure (water pressure) MPa	4
Fluid temperature °C	5 to 60
Ambient temperature °C	-10 to 60
Thermal class	Class 130 (B)
Working environment	Indoors/outdoors
Atmosphere	A place free of corrosive gases, liquids, chemicals, and explosive gases
Valve structure	Pilot kick poppet, diaphragm drive
Valve seat leakage (*1) cm ³ /min (ANR)	1 or less (air)
Mounting orientation	Limited to vertical orientation with the coil on top
Body/sealant	stainless steel/fluoro rubber
Degree of protection	IP65

*1: Value at pneumatic pressure of 0.02 to 1.0 MPa.

When used at a pressure less than 0.02 MPa, the sealant may be unstable. Contact CKD in this case.

Individual specifications

Descriptions Model No.	Port size	Orifice size (mm)	Min. working pressure differential (MPa)	Max. working pressure differential (MPa)			Rated voltage	Apparent power (VA)				Power consumption (W)	Weight (kg)
				Air	Water/kerosene	Oil (50 mm ² /s)		When holding		When starting			
				AC	AC	AC		50 Hz	60 Hz	50 Hz	60 Hz	50/60 Hz	
NC													
ADK11-15A	Rc1/2	16	0	1	1	0.6	100 VAC 50/60 Hz 200 VAC 50/60 Hz	25	21	84	75	10/8.5	1.2
ADK11-20A	Rc3/4	23											1.3
ADK11-25A	Rc1	28											1.7

*1: The model numbers above show the basic port size (Rc). Refer to How to order for other combinations.

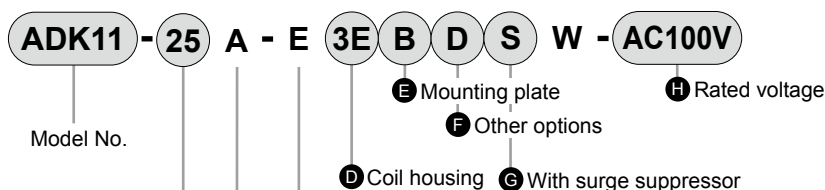
*2: The voltage fluctuation range must be within $\pm 10\%$ of the rated voltage.

Flow characteristics

Model No.	Port size	Orifice size (mm)	Flow characteristics			
			C [dm³/(s·bar)]	b	Cv	S (mm²)
NC						
ADK11-15A	Rc1/2	16	20	0.31	4.5	-
ADK11-20A	Rc3/4	23	-	-	8.6	162
ADK11-25A	Rc1	28	-	-	12.0	231

*1: Effective cross-sectional area S and sonic conductance C are converted as $S \approx 5.0 \times C$.

How to order



Code	Content		
A Port size			
15	1/2		
20	3/4		
25	1		
B Thread			
A	Rc		
C Body/sealant combination			
	Body	Seal	Remarks
E	Stainless steel	Fluoro rubber	Air/water/low vacuum/kerosene/oil
D to H			
Refer to the following table for details on the coil housing, other options, voltage, etc.			

[Example of model No. 1]

ADK11-15A-E3EW-AC100V

- (A) Port size : 1/2
 (B) Thread : Rc
 (C) Body/sealant combination : Body - stainless steel, sealant - fluoro rubber
 (D) Coil housing : Open frame with round terminal box
 (E to G) : None
 (H) Rated voltage : 100 VAC 50/60 Hz, 110 VAC 60 Hz

For Items (D) to (H), the combinations indicated with codes are available.

Note that if options for Items (E) to (G) are not required, they should be left blank.

D Coil housing			E	F Other options			G	H Rated voltage
Content			Mounting plate	Cable gland			With surge suppressor	Content
				(marine cable gland)				
				A-15a	A-15b	A-15c		
3E	Open frame	With round terminal box (G1/2)	B	D	E	F	S	100 VAC, 200 VAC
3L		Round terminal box with lamp (G1/2)						

Refer to the following cautions for Items (E) to (H).

⚠ Precautions for model No. selection

Notes for Items (E) to (G)

*1: For Item (E), select an option from D, E, and F.

*2: The surge suppressor is mounted in the terminal box when the coil is with a terminal box.

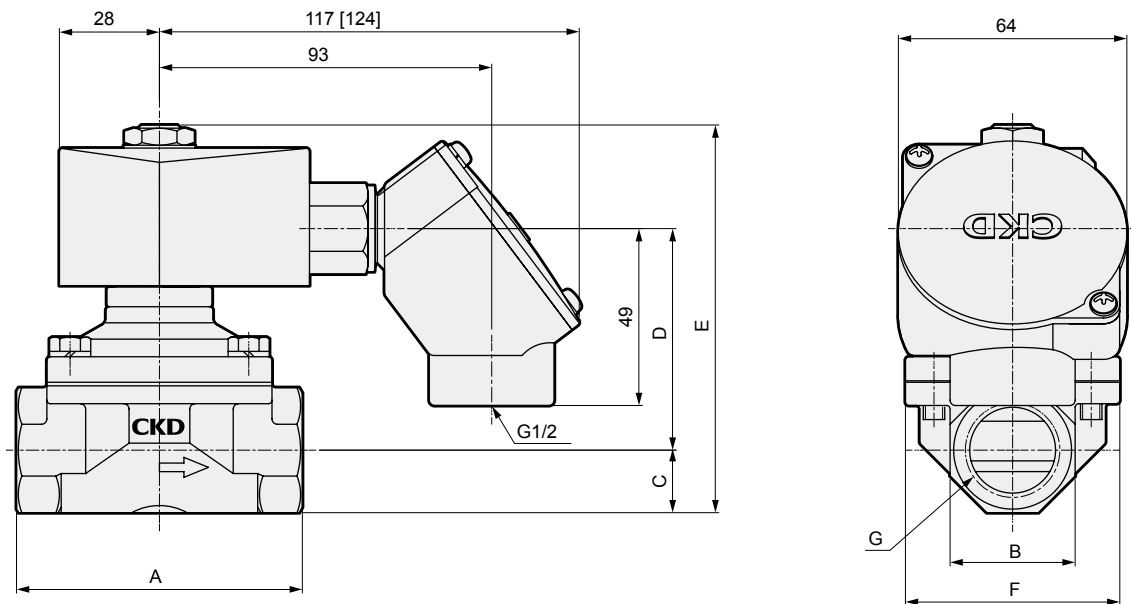
Notes for Item (H)

*3: 100 VAC coil is compatible with 100 VAC 50/60 Hz and 110 VAC 60 Hz, and 200 VAC coil is compatible with 200 VAC 50/60 Hz and 220 VAC 60 Hz.

Dimensions: ADK11-W Series

- Open frame + round terminal box
ADK11-15A/20A/25A-E 3E
3L

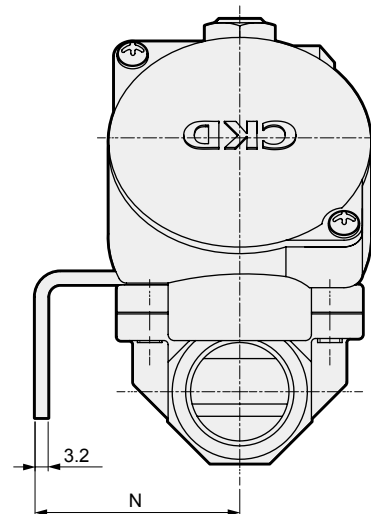
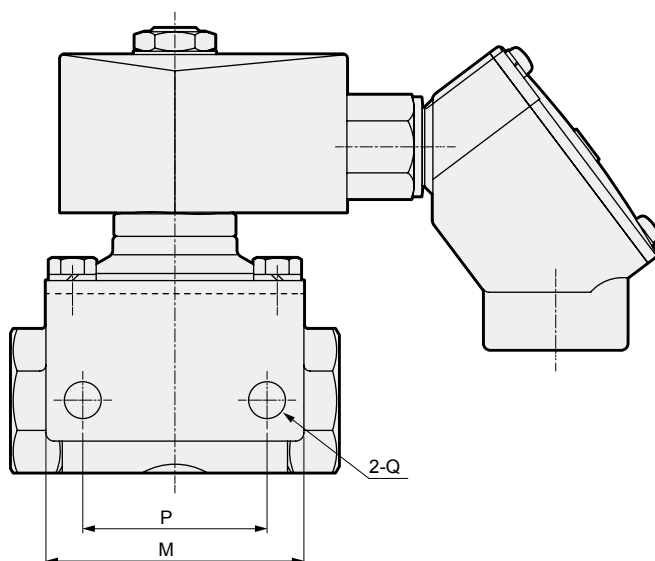
Values shown in [] are for ADK11-15A/20A/25A-E 3L types.



Model No.	A	B	C	D	E	F	G
ADK11-15A-E3E/3L	71	29	14.5	58.5	102	50	Rc1/2
ADK11-20A-E3E/3L	80	35	17.5	62	108.5	60	Rc3/4
ADK11-25A-E3E/3L	90	45	22.5	67.5	119	71	Rc1

Dimensions: ADK11-W Series

- Mounting plate
ADK11-15A/20A/25A-E*B



Model No.	M	N	P	Q
ADK11-15A-E3E/3LB	56	45	40	ø9
ADK11-20A-E3E/3LB	63	50	45	ø9
ADK11-25A-E3E/3LB	75	56	50	ø11

- Open frame + round terminal box + cable gland
ADK11-15A/20A/25A-E



Values shown in [] are for ADK11-15A/20A/25A-E [3L] types.

