

L type pipe adaptor Standard White Series

A101/A401/A801-W Series

● Port size: 1/8 to 1



Specifications

Descriptions	A101-W	A401-W *1	A801-W
Working fluid	Compressed air		
Max. working pressure MPa	1.0 (≈150 psi, 10 bar)		
Proof pressure MPa	1.5 (≈220 psi, 15 bar)		
Port size Rc,NPT,G	1/8,1/4	1/4,3/8,1/2	3/4,1
Ambient/fluid temp °C	5 (41°F) to 60 (140°F)		
Weight (excluding joiner) kg	0.045	0.13	0.4

*1: A401-W can be connected to both 3000-W and 4000-W Series.

Option weight

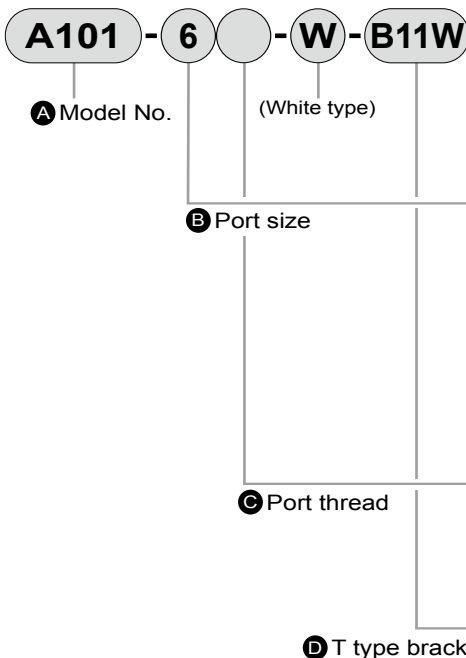
* Add to the weight of the standard accessories.

Unit: kg

Code	T type bracket				
	Blank	B11W	B31W	B41W	B81W
A101	0.011	0.024			
A401	0.036		0.086	0.094	
A801	0.094				0.169

Joiner weight is included when blank.

How to order



Code		Contents		
A Model No.				
A101		L type pipe adaptor		
A401		L type pipe adaptor		
A801		L type pipe adaptor		
B Port size				
		A101	A401	A801
6	1/8	●		
8	1/4	●	●	
10	3/8		●	
15	1/2		●	
20	3/4			●
25	1			●
C Port thread				
Blank		Rc thread		
N		NPT thread		
G		G thread		
D T type bracket *1				
Blank	None	●	●	●
B11W	For 1000 Series	●		
B31W	For 2000 Series For 3000 Series		●	
B41W	For 4000 Series		●	
B81W	For 6000 Series For 8000 Series			●

Compatible model

- A101-6, 8-W
.....1000-W Series
- A401-8, 10, 15-W
.....2000, 3000, 4000-W Series
- A801-20, 25-W
.....6000, 8000-W Series

⚠ Precautions for model No. selection

*1: The joiner set (joiner, bolt, O-ring) and one gasket are enclosed as standard.

Note: Refer to the following page for dimensions.

- F.R.L
- F (Filtr)
- R (Reg)
- L (Lub)
- PresSW
- Shutoff
- SlowStart
- FimResistFR
- Oil-ProhR
- MedPresFR
- No Cu/
PTFE FRL
- Outdrs FR
- F.R.L
(Related)
- CompFRL
- LgFRL
- PrescR
- VacF/R
- Clean FR
- ElecPneuR
- AirBoost
- SpdContr
- Silncr
- CheckV/
other
- Jnt/tube
- AirUnt
- PresCompn
- Mech/
ElecPresSw
- ContactSW
- AirSens
- PresSW
Cool
- AirFloSens/
Contr
- WaterRtSens
- TotAirSys
(Total Air)
- TotAirSys
(Gamma)
- RefrDry
- DesicDry
- HiPolymDry
- MainFiltr
- Dischrg
etc
- Ending

Pipe adaptor

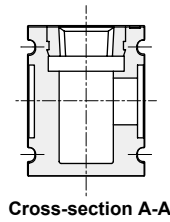
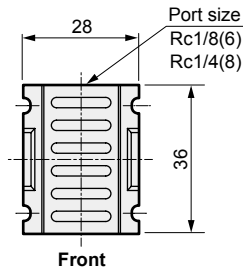
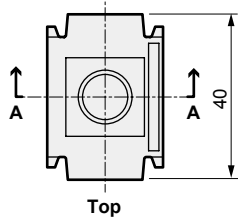


Dimensions

- F.R.L
- F (Filtr)
- R (Reg)
- L (Lub)
- PresSW
- Shutoff
- SlowStart
- FimResistFR
- Oil-ProhR
- MedPresFR
- No Cu/PTFE FRL
- Outdrs FR
- F.R.L (Related)**
- CompFRL
- LgFRL
- PrecsR
- VacFR
- Clean FR
- ElecPneuR
- AirBoost
- SpdContr
- Silncr
- CheckV/other
- Jnt/tube
- AirUnt
- PrecsCompn
- Mech/ElecPresSw
- ContactSW
- AirSens
- PresSW Cool
- AirFloSens/Contr
- WaterRtSens
- TotAirSys (Total Air)
- TotAirSys (Gamma)
- RefrDry
- DesicDry
- HiPolymDry
- MainFiltr
- Dischrg etc
- Ending

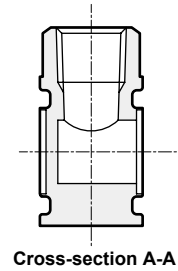
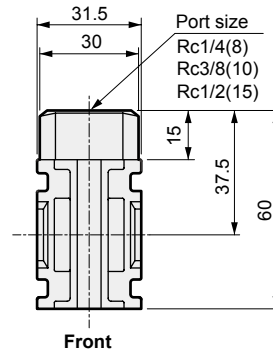
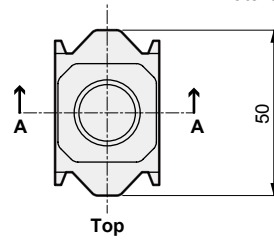
● A101-W

Material: Polyamide resin



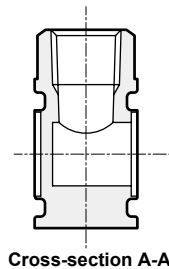
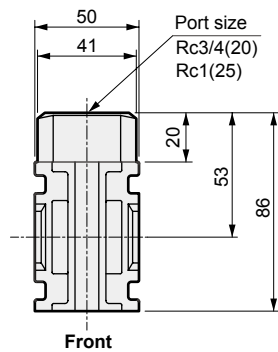
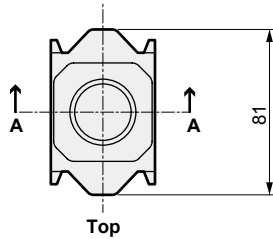
● A401-W

Material: Aluminum alloy die-casting
Painting

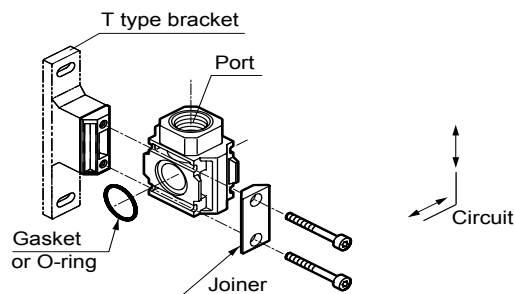


● A801-W

Material: Aluminum alloy die-casting
Painting



L type pipe adaptor



● Applications



Note: Insert the O-ring when mounting on the primary side for the air flow, and insert the gasket when mounting on the secondary side.