

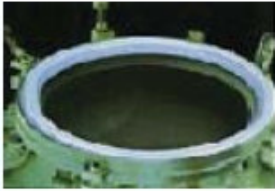
Seflon Soft Seal

Seflon SEAL is made of 100% pure expanded P.T.F.E.

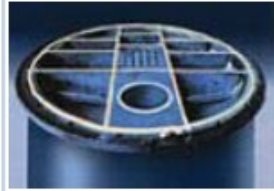
Seflon SEAL can be used in virtually all type of sealing applications throughout industry replacing most of the sheet gasketing used.

Use it on large complex or damaged sealing surfaces and fragile equipment like glass, plastic, FRP and ceramic.

The self-adhesive backing makes it easy to install, even on vertical surfaces. Due to its strength and resistance to creep it will maintain a very high level of sealing over time even up to 600°F (315)



Low stress to seal requirements help protect fragile flanges and delicate assemblies.



Ideal for large complex or damaged sealing surface due to its strong yet comfortable nature.



No pre-cutting and no wasteful scrape saves time and money when sealing large equipment flanges.



Higher resistant to creep and cold flow when sealing of heat exchanger and no need to retight after installation.



Since it is so versatile and inert to most chemicals, it's perfect for the most challenging chemical application.

■ Seflon SEAL PROPERTY VALUES

Items	Property Value
Melting Point	327 °C
	W=3mm 75kg/cm ² (1050PSI)
Minimum	5mm 100kg/ cm ² (1400PSI)
Bolting pressure	6-9mm 125kg/cm ² (1750PSI)
	13mm 150kg/cm ² (2100PSI)
Applicable Pressure	Gas-20kg/ cm ² (280PSI)
	Liquid-50kg/ cm ² (700PSI)
Applicable Temp.	-110 °C ~ +260 °C
Heat Conductivity	0.03kcal/h.m. °C
Chemical Resistance	Anti-Acid, Anti-Alkali
	Anti-Chemicals
PH Range	0~14
Tensile Strength	1.4kgf/mm ² (2000psi)
Creep Relaxation %	40

■ STANDARD SIZE

Code No.	English	Metric	English	Metric
TSS 1.5x3	1/8"	3mm	100feet	30M
TSS 2x5	3/16"	5mm	75feet	20M
TSS 2.5x7	1/4"	7mm	50feet	15M
TSS 3x10	3/8"	10mm	25feet	8M
TSS 4x12	1/2"	12mm	22feet	7M
TSS 5x14	4/7"	14mm	15feet	5M
TSS 6x17	2/3"	17mm	15feet	5M
TSS 7x20	3/4"	20mm	15feet	5M

■ TORQUE REQUIREMENTS

Pipe	Applicable Pressure	Before Bolting	After Bolting	Std thick After Bolting	Min. Bolting Pressure	
10A~50A	50kg/cm ²	3mm	5 mm	0.3~0.4mm	75kg/cm ²	(1050PSI)
50A~30A	50kg/cm ²	5mm	8 mm	0.5~0.6 mm	100kg/cm ²	(1400PSI)
50A~30A	20kg/cm ²	6mm	9 mm	0.7~0.8 mm	125kg/cm ²	(1750PSI)
50A~30A	20kg/cm ²	9mm	14 mm	0.8~0.9 mm	125kg/cm ²	(1750PSI)
50A~30A	20kg/cm ²	13mm	19 mm	1.1~1.3 mm	150kg/cm ²	(2100PSI)
300A	20kg/cm ²	16mm	22 mm	1.5~1.9 mm	150kg/cm ²	(2100PSI)
300A	20kg/cm ²	19mm	26 mm	1.8~2.3 mm	150kg/cm ²	(2100PSI)
300A	20kg/cm ²	25mm	33 mm	2.0~2.5 mm	150kg/cm ²	(2100PSI)

■ Versatile and Safe

Seflon SEAL is non-contaminating and non-aging. It is suitable for FDA/USDA applications too. **Seflon SEAL** is resistant to most chemicals and able to handle a 0-14Ph range at temperatures from -450°F to 600°F (-268°C to 315°C) and pressures from full vacuum to 3000psig(200bar) with a P X T factor of 1.8million.

Uncompromised Value

Seflon SEAL saves money and time, since there is no scrape or waste. **Seflon SEAL** costs less than other gasket materials. By using only a few sizes of **Seflon SEAL** large inventories of packing and sheet gasketing and costly precut gaskets can be eliminated. Installation time is kept to a minimum since there are no templates, precutting or special fitting requirements.

■ Eliminate Retorquing

Seflon SEAL is soft and spongy and conforms easily to all surface irregularities and when compressed forms a thin strong gasket able to continuously seal without retorquing, even at temperatures up to 600°F.

Easily Installation

Select the correct sealant based on the effective sealing width required (see size selection chart).

Clean the surface to be sealed.

Remove the backing from the adhesive strip and apply the **Seflon SEAL** on the sealing surface inside the bolt holes and cross the ends at or near a bolt hole 1-2cm.

Refer to the torque requirement table and tighten bolts diagonally.

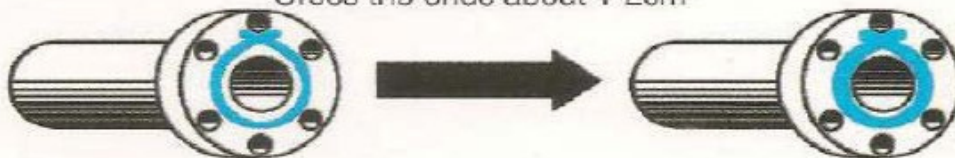


Effective Sealing Width	Recommended Size of Seflon SEAL
1/8"~ 1/4"	1/8" (3mm)
5/16"~ 3/8"	3/16"(5mm)
7/16"~ 5/8"	1/4"(6mm)
3/4"~1"	3/8"(9mm)
1 1/8"~1 1/2"	1/2"(13mm)
1 5/8"~ 2"	5/8"(16mm)
2"~ 2 1/2"	3/4"(19mm)
2 1/2"±	1"(25mm)

(WHEN APPLIED)

(AFTER BOLTING)

Cross the ends about 1-2cm



Tighten the bolts diagonally