



NEXUS WIRELESS CALL SYSTEM



- Durable, high quality with **CE / FCC CERTIFIED**
- easy to **USE**, easy **CLEAN**
- easy to **PROGRAMME** and **INSTALL**
- **6 - 8 HOURS** battery backup upon power failure
- **USER FRIENDLY**
- Local technical **SUPPORT**



DISTANCE of
Transmission (at
open area)



300 meters !!



The spread of coronavirus has led to a significant surge in demand for medical ward services. In order to cope with bed short of the expected surge in corona patients, hospitals have already begun to step up and provide overflow bed capacity, and the call bell is an indispensable part of it. The **Nexus Call System** from Rondish may come in handy. It is a portable nurse call solution that **can be quickly deployed with minimum installation**. It's high flexibility making it a perfect choice for a surge in bedding needs during the coronavirus pandemic.

Features Highlight

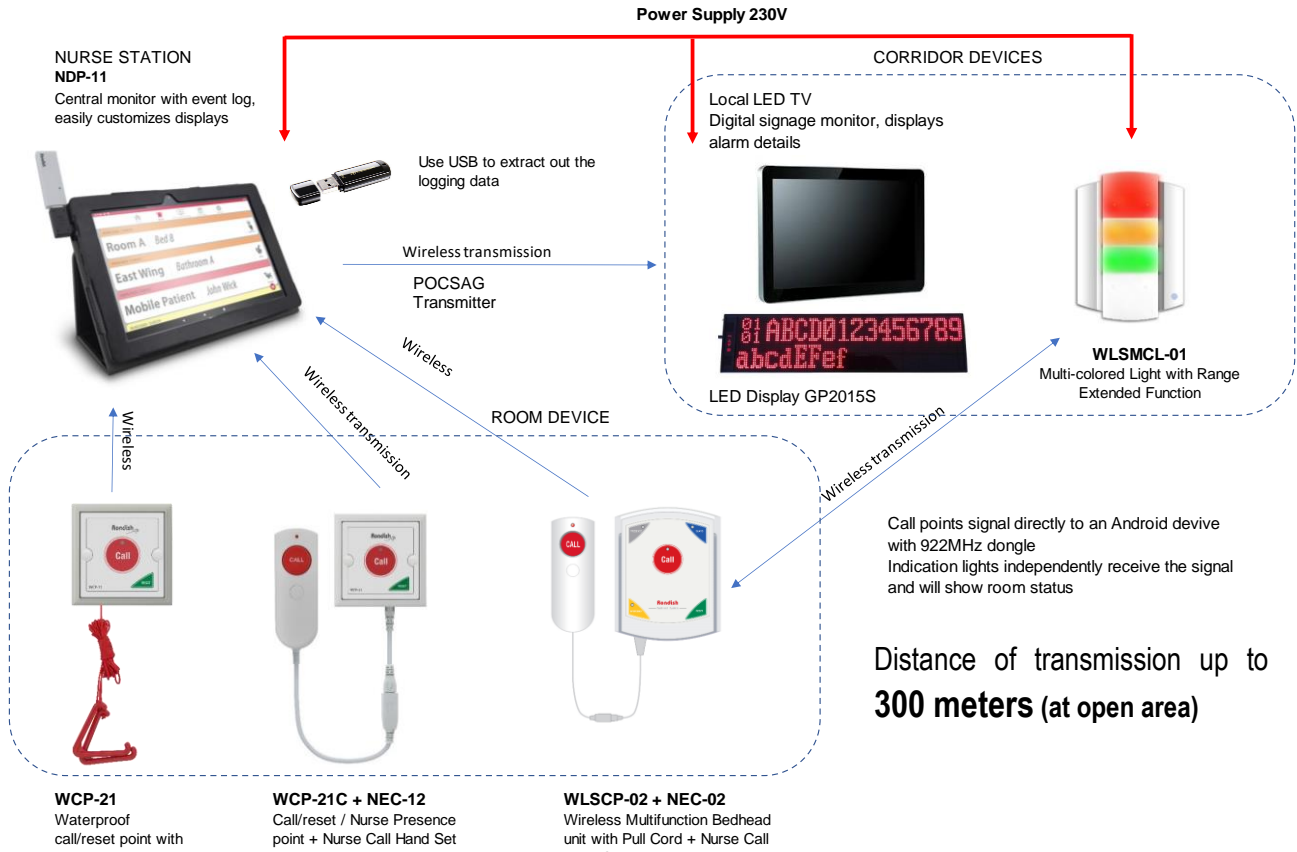
- Color Coded Touchscreen Display
- Audio Call Levels Indication
- Calls Display in Order of Priority
- Multiple Call Devices are Available for Option
- Low Battery Alert
- Event Log and Response Time Tracking
- Password Protected
- Options for Wall-mount / Desk-mount



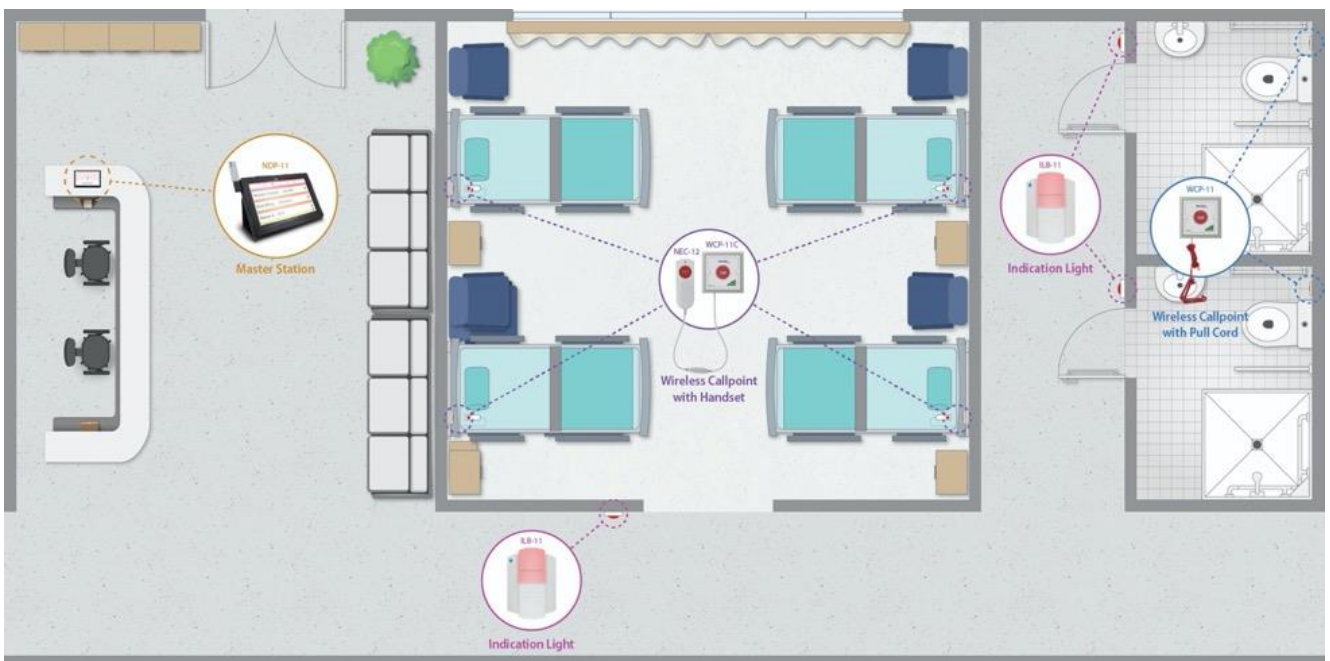


SCHEMATIC DIAGRAM

SCHEMATIC DIAGRAM - RONDISH NEXUS WIRELESS NURSE CALL SYSTEM



SYSTEM LAYOUT





EXPANDABILITY

Fall Management Components



Wired Bed Monitoring



Palamino Monitor

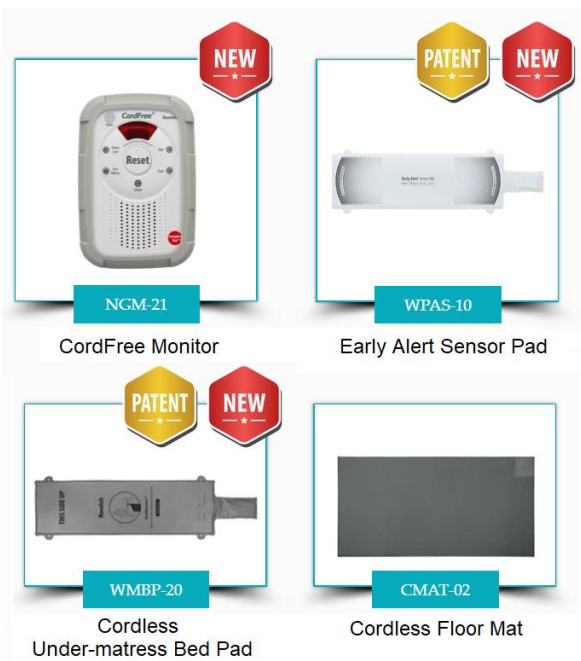
Under Mattress Pad

Bed Pad

Floor Mat



Cordless Bed Monitoring

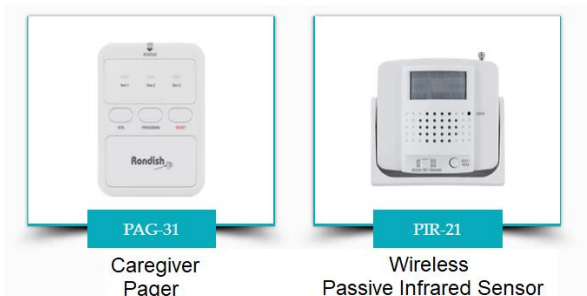


CordFree Monitor

Early Alert Sensor Pad

Cordless Under-mattress Bed Pad

Cordless Floor Mat



PAC-31

Caregiver Pager

PIR-21

Wireless Passive Infrared Sensor



TXP-11 Pendant Transmitter

- Active emergency button sends signal to central monitor or field receiver
- Accelerometer to trigger call in case of patient fall



PRODUCT DATASHEET

Product : **NDP-11 Nexus Display Panel**
Description : Android tablet with Nexus software for basic call system. Must include receiver dongle to operate

Features:

- 10" Android tablet with folio included (as shown)
- Customizable descriptions for device location
- Three alarm priority levels - follows HTM08
- Built-in record of calls
- Low battery and signal lost alert
- 6 hours battery power backup in case of main failure
- Wall-mount bracket available

Works with:

- DON-20 Wireless Receiver Dongle
- ZP-01(M) Master Protektor Unit
- NEC-05 Wireless Patient Handset
- WCP-11 Wireless Call/Reset Button



- WCP-11C + NEC-12 Wireless Call/Reset with Patient Handset
- ILB-11 Room Indicator Light
- TXP-11 Emergency Transmitter with Man-Down alert
- WLSMCL-01 Wireless Multi-colored Light

Technical Specifications

Operating frequency: 433.92MHz
Operating range: 100m (line of sight)
Power supply: DC5V input, 2000mA
Battery back-up for 4+ hours
Dimensions: 266 x 155 x 20mm
Net weight: 850g
Operating temp.: 5°C to 40°C

Standards

EMC: EN 55022
Radio: EN 300220-1&2,
EN 301489-1&3
Alarm: EN 50130-4
Safety: EN 60950-1
Manufacture: ISO 9001:2008, ISO 13485:2003

Product : **NEC-02 / NEC-12 Nurse Call Handset**
Description : Nurse call handset with call button and wall-mount bracket. Connects with Multi-function or Bedhead Call Point

Features:

- Large rubber call button with reassurance LED
- USB break point to protect products
- NEC-02 cable comes with RJ12 connection for Protektor Call Point. NEC-12 comes with RJ10 connection instead
- Plastic wall-mount bracket with optional 90° 6.3mm jack lead

Works with:

- WLSCP-02 Multi-function Call Point (NEC-02)
- WCP-21C Bedhead Call Point (NEC-12)
- MEX-20 Multiport Expander
- CMEX-11 Cordless Expander
- USBC-05 Lead with 90° audio jack (6.3mm)



Technical Specifications

Dimensions(LxWxD) ~12 x 5 x 2.5cm (handset only)
Housing material: ABS
Net weight: 160g (with cable and bracket)
Operating temp.: 5°C to 40°C
Rel. Humidity: 85%



Product : WCP-21C Bedhead Call Point

Description : Wireless call point with both call and reset buttons, with RJ10 input for a patient handset, works as part of Protektor network

Features:

- Handshake signaling with Protektor / Nexus network
- Read-in to indication light
- **Generate call, reset, emergency call and nurse presence**
- Optional patient handset (as shown)
- Programmable to display variety of locations
- Low battery and automatic fault detection
- Changeable batteries
- Battery life: ~2 - 3 year, assumes 3-5 calls/day

Works with:

- Nexus Display Panel
- WLSMCL-01 Wireless Multicolored Light
- ZP-01 Zone Processor
- NEC-12 Patient Handset (shown in picture)



Product : WCP-21 Bathroom Call Point

Description : Wireless call point with call and reset buttons, waterproof to IP 65, and works as part of a Protektor network

Features:

- Handshake signaling with Protektor network
- Read-in to indication light
- Safe for use in toilet or shower area
- Normal call (red button) and Reset (green button)
- Optional pull cord (not shown)
- Programmable to display variety of locations
- Waterproof to IP65
- Low battery and fault detection
- Changeable batteries
- Battery life: 2-4 years, assumes 1 call/day

Works with:

- NDP-11 Nexus Display Panel
- WLSMCL-01 Wireless Multicolored Light
- ZP-01 Zone Protektor



Technical Specifications

Operating frequency: 866 or 922MHz
Operating range: 200m (line of sight)
Power supply: 2 x CR2477 lithium ion battery
Dimensions: 8.5 x 8.5 x 6cm
Housing material: ABS
Net weight: 130g
Operating temp.: 5°C to 40°C
Rel. humidity: 95%

Standards

EMC: EN 55022
Radio: EN 300220-1&2,
EN 301489-1&3
Alarm: EN 50130-4
Safety: EN 60950-1
Manufacture: ISO 9001:2008, ISO 13485:2003



Product : WLSCP-02 Multi-function Call Point

Description : Wireless multi-function call point with five buttons, input for patient handset, and bed sensorpad/floor mat

Features:

- Handshake signaling with Protektor network
- Normal call (red button)
- Emergency call (yellow button)
- Presence1/Presence2 (grey button)
- Guard presence (blue button)
- Reset (green button)
- Input for nurse call handset, RJ12 connection
- Input for bed pad/floor mat, RJ10 connection
- Comes with removable pull cord
- Low battery and fault detection

Works with:

- WLSMCL-01 Wireless Multicolored Light
- ZP-01 Zone Protektor
- NEC-02 Nurse Call Handset
- FBP-10 Foldable Bed Pad
- FMAT-02 Floor Mat
- CK-01 Caregiver Key
- WPG-01 System Programmer
- NDP-11 Nexus Display Panel



Technical Specifications

Operating frequency: 866 or 922MHz
Operating range: 200m (line of sight)
Power supply: 12VDC, 200mA
4 x AA alkaline batteries
Dimensions: 12.5 x 10 x 3.5cm
Housing material: ABS + PC
Net weight: 200g
Operating temp.: 5°C to 40°C
Rel. humidity: < 90%

Standards

EMC: EN 55022
Radio: EN 300220-1&2,
EN 301489-1&3
Alarm: EN 50130-4
Safety: EN 60950-1
Manufacture: ISO 9001:2008, ISO 13485:2003
FCC Approved FCCID: WNG-WLSCP-02



Product : WLSMCL-01 Wireless Multi-coloured Light

Description : Wireless indication light with four colors to indicate call type, can forward signals received to boost signals and increase range, optional buzzer

Features:

- Four colors, corresponding to normal call, toilet alarm, and two levels of nurse presence
- Optional buzzer setting for active call
- Red or white light flashes for emergency call
- Wireless receiver and transmitter allows for signal- boosting to increase wireless range
- Flashing blue LED to indicate power status

Works with:

- WLSCP-02 Multi-function Call Point
- WCP-21C Bedhead Call Point
- WCP-21 Waterproof Call Point
- ZP-01 Zone Protektor



Technical Specifications

Operating frequency: 866 or 922MHz
Operating range: 100m (line of sight)
Power supply: 12Vdc, 200mA
Battery life: 2-4 years
Dimensions: 16 x 12 x 4cm
Housing material: ABS + PC
Net weight: 180g
Operating temp.: 5°C to 40°C
Rel. humidity: <90%

Standards

EMC: EN 55022
Radio: EN 300220-1&2,
EN 301489-1&3
Alarm: EN 50130-4
Safety: EN 60950-1

Manufacture: ISO 9001:2008, ISO 13485:2003
IP Rating 65
FCC Approved FCCID: WNG-WLSMCL-01



Product : GP2009TR POCSAG Transmitter / Repeater

Description : POCSAG transmitter/repeater. Sends alarm details to wireless LED display panel, dotmatrix display and/or data pager.

Features:

- Transmits alarm data to remote displays
- Simple software interface
- Adjustable data rate on transmission
- Can repeat signals to extend site coverage
- Wall or table mountable, adjustable antenna
- USB and RS232 ports



Works with:

- GP2015S wireless LED display panel
- GP2009N data pager
- Protektor II Wireless System
- Nexus Wireless Call System
- SmartBeds Ward Management Platform

Standards

EMC:	CE
Radio:	RoHS
Alarm:	FCC

Technical Specifications

Operating frequency:	420 or 470MHz	Housing material:	Aluminum
Operating range:	Up to 2km	Net weight:	230g
Transmission Power:	2W max	Operating temp.:	-10°C to 50°C
Power supply:	7-20Vdc	Rel. humidity:	<90%
Dimensions:	110 x 62 x 22mm		

Product : GP2015S Wireless LED Dotmatrix Display

Description : Lightweight wireless LED dot matrix display for showing alarm type and location. Works with Protektor II, Nexus and SmartBeds

Features:

- 2 x 16-digit dot matrix alphanumeric display
- Wall or ceiling mounted
- Audible buzzer or voice alert
- Supports English, German, French, and Chinese
- 8 capcodes allows multiple zones in a facility



Works with:

- GP2009TR transmitter
- Protektor II Wireless System
- Nexus Wireless Call System
- SmartBeds Ward Management Platform

Technical Specifications

Operating frequency:	400 - 499MHz	Housing material:	ABS	Standards	
Operating range:	Up to 2km	Net weight:	1600g	EMC:	CE
Transmission Power:	N/A	Operating temp.:	-5°C to 40°C	Radio:	RoHS
Power supply:	5Vdc, 3A	Rel. humidity:	<90%	Alarm:	FCC
Dimensions:	650 x 168 x 32mm				