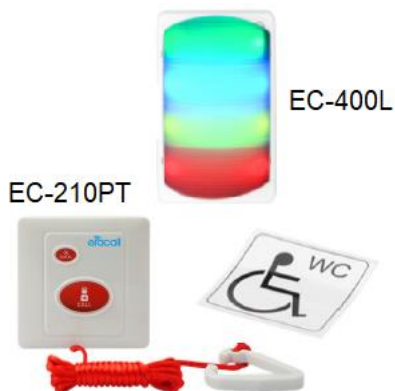
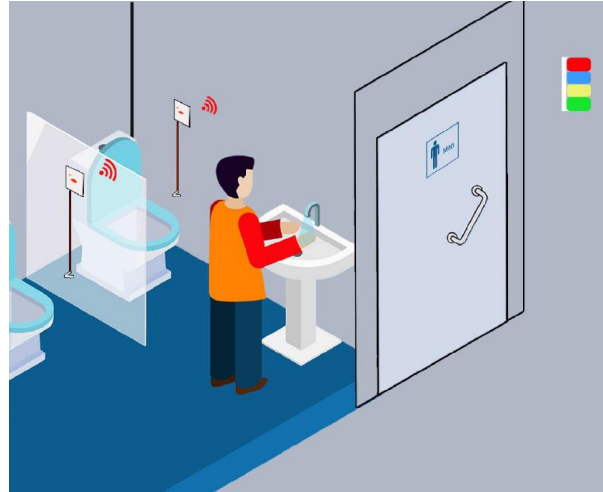


ERACALL WIRELESS DISABLED TOILET CALL SYSTEM

Designed in Australia, **ERACALL Wireless Disabled Toilet Kits** are cost effective, easy to install and meet hospital standards.

Each kit contains all the parts required to install an effective alarm system and are designed to be easy to install and commission. Each kit features audible and visual alarms and integrated wireless call point that can be used to provide the most effective emergency call.

To ensure product performance in the event of mains power failure, it has in built battery back-up.



100% Water proof call button.

Powerful **audible and visual** alarm c/w battery backup

Transmission distance: **300m** (open area)

Compliant to hospital/building standard

Dimension : EC-210PT 85x85x15mm
: E-C400L 153 x 97 x 43mm

Power : C210-PT Button battery
: EC400L 12V DC Adaptor



Features:

- Durable and waterproof hardware
- Visual and audible Alarm Indicator
- Easy integration with Eracall system
- Seamless interface with highly Visible Pull Cord
- Compliant to hospital/building standard

Any enquiry please contact the following:

Jimmy Tan 012-809 8169
Iza 03 56128169
Email eightfoldsb@gmail.com