

DIESEL FUEL TREATMENT

DESCRIPTION:

POWERUP DIESEL FUEL TREATMENT is a 3 in 1 M.A.S. formulation. It consists **Mineral hydrocarbon, Alcohol and Synthetic** as the active ingredients. It completely dissolves and more than 95% immediately combustible, the balance 5% will provide a temporary protection against worn out valves, piston ring and cylinder wall. This protective film will eventually depleted after a while, due to enormous heat in the combustion chamber and friction between two rubbing surfaces of the engine components. It is manufactured with high safety measure and quality control according to ISO9001:2008 standard. Recommended shelf life is 3 to 3½ yrs.

HOW IT WORKS?

POWER UP DIESEL FUEL TREATMENT works in 3 WAYS.

- 1st – it provides better combustion. This will in turn convert energy to work done, which means better fuel economy.
- 2nd – it provides better protection. The 5% temporary unburned active ingredients, will improve the lubricity and protection from cold start dry friction between piston rings and cylinder walls, valves & valves seats, and etc.
- 3rd – It contains alcohol with detergent that cleans the fuel lines and systems.



Available in 287ml

Intake Valve Before & After Treatment



Before After

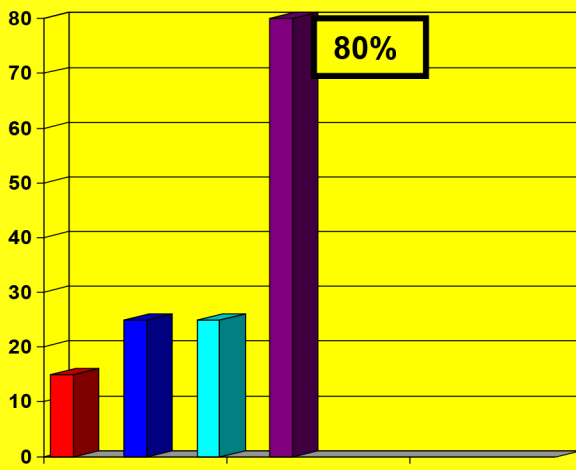
Injector Nozzles Before & After Treatment



Before After

EMISSION REDUCTION TEST DAIHATSU 3 TON – JGW 8039

% Emission Reduction



Different Types of Fuel Treatment

BENEFITS / FEATURES:

- Ensures maximum engine performance and power.
- Reduces smoke emissions up to 80%.
- Provides better fuel burning.
- Provides top head lubrication.
- Cleaner pistons & reduces carbon build-up..
- Cleans injectors & valves.
- Ensures smoother, cooler and quieter engine.
- Keeps engine running clean and efficient.
- Safe for automobiles which are fixed with catalytic converters & oxygen sensors.
- Increases fuel mileage up to 15% or more, depends on types of automobiles, habit of driving and engine conditions.
- Recommends for gasoline, LPG, Gasohol, NPG & Diesel.
- Treatment Dosage: 100ml treats 50 litres.