



HUGE | **VinciSmile**

CLINICAL PRODUCTS

PROFESSIONAL · SAFE · PRECISE



VINCISMILE GROUP LLC

Add: 18229 Railroad St, City of Industry, CA 91748, USA

Email: info@vincismile.com

Web: www.vincismile.com

   
Follow @VinciSmile

www.vincismile.com

Diversified Digital Clinical Products

PROFESSIONAL · SAFE · PRECISE

Huge Dental

- PERFIT
- Glass Lonomer Cement
- Restorative Materials

...

VinciSmile

- Invisible Orthodontic Aligner
- Impress Me

...

VinciSmile

- Guided Implant Plan
- 3D Printer & Resin
- Guided Surgery Kit

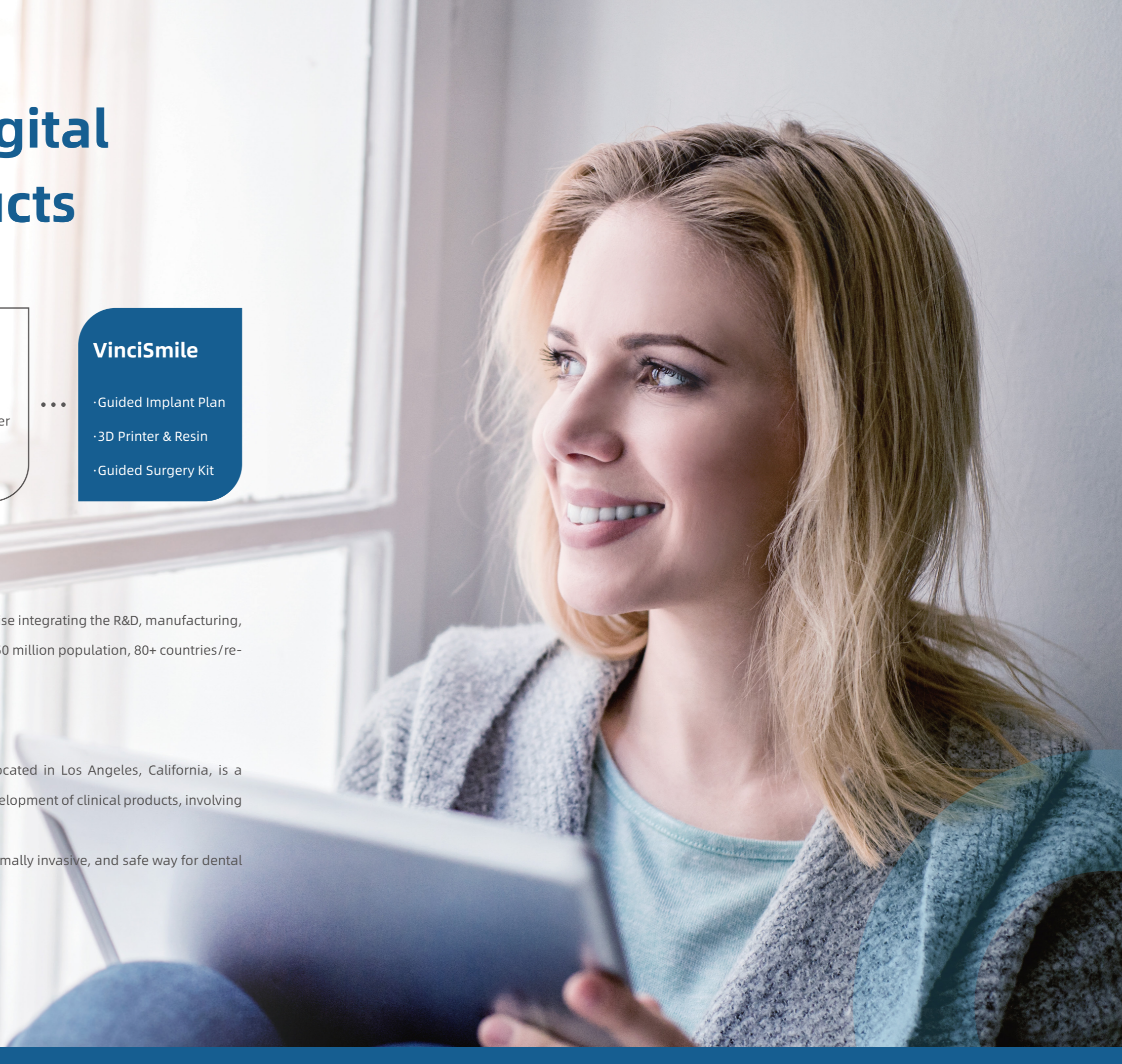
·Huge

Huge Dental, established in 1985, is a high-tech enterprise integrating the R&D, manufacturing, sales and service of dental products and services. Over 50 million population, 80+ countries/regions are using Huge product.

·VinciSmile

VinciSmile, originating from USA with headquarters located in Los Angeles, California, is a high-tech enterprise specialized in the research and development of clinical products, involving invisible orthodontic aligner and surgical guide.

The core focus of VinciSmile is to have an accurate, minimally invasive, and safe way for dental professionals to the digital age.



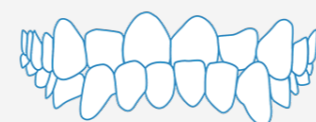


VinciSmile Clear Aligner Advantages

1. Premium Orthodontic Medical Aligner Material
2. Innovative Industry Leading Double-Aligner-System
3. Full International Certifications
4. Patented and Intelligent Software
5. Orthodontist-Led Team of 3D Virtual Modelling Treatment Plans
6. Dedication to Customer Oriented Service



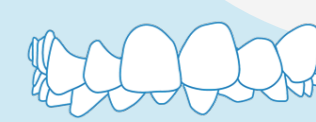
Indications



Underbite



Open Bite



Deep Overbite



Spaced Teeth



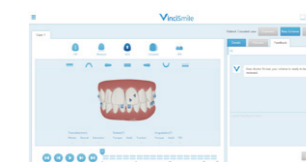
Crowded Teeth



Protrusion

Process of Clinical Application

- **Clinical reception**
Clinical examination + necessary treatment + photos and X-rays
- **Case submission**
PVS impression/oral scanning file + photos and X-rays
- **3D scheme confirmation**
scheme review + suggestion submission + scheme confirmation
- **Aligner fabrication**
3D printing + compressing impression + cutting + trimming and polishing
- **Wearing**
Clinic operation + patients' wearing guidance
- **Completion of treatment**
Confirmation form + photos and X-rays + impression taking + retention



Impress Me

Professional customized service on home impression



Customized Options

(1) Plentiful Accessories

Recommended Accessories for Home Impression

- Trays:** Stainless Steel, Plastic, Aluminum
- Gloves:** PE, PVC Nitrile
- Bags:** PP, PE, Nylon/Ziplock Bag, Foil Pouch with printing, Pouch

Optional Accessories for VinciSmile aligner Customized service

- Printings**
Nice printings improve products quality
- Mouth Stretcher**
Help patients put the tray into their mouth
- Dental Floss Pick**
Remove food residues
- Aligner Case**
Store the aligner
- Extractor**
Remove the aligner
- Chewie**
Help snap aligner into the right position

(2) Silicone Material Color (Putty Base)

Color	Blue	Red	Yellow	Green	Orange	Purple
Before Mixture						
After Mixture						

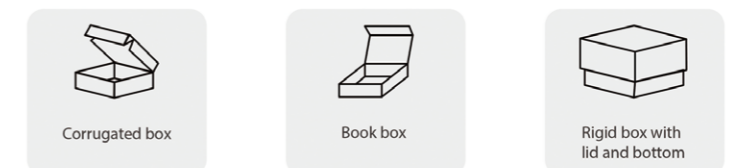
Putty color will dilute after mixture. 36 options for putty base are available now. Colors can be customized based on clients requirements. *1 (refer to PMS color chart)

(3) Customized Box

Inner Shelf: Paper, PET, EVA

Paper Material: White cardboard, E flute corrugated board, thick cardboard

Box Pattern



About Impress Me

Impress Me provides all the benefits of a true putty, including higher consistency and insertion force than heavy body materials. Plus, it is designed exclusively for patients to make impression themselves -enabling reliable and reproducible dosage.

Application: dental retainer, teeth whitening, mouth guard, Anti-Snoring, Teeth Grinding etc.



Total Solution Provider

HUGE is able to provide professional package design, artwork design and integrated product offering.



Rich Customized Options

More than 30 combinations of product configuration can be provided to customers.



Reliable Quality

Impress Me uses the same silicone material, as HUGE's traditional impression material brand, PERFIT.

HUGE CLINICAL SOLUTION SYSTEM



Elastomeric Impression Material

PERFIT is proved to be one of the best silicone impression materials after more than 10 years practice in clinics.



Perfit Putty Hand-Mix

PERFIT PUTTY is an addition curing vinyl polysiloxane silicone impression system used to create impressions of the highest detail reproduction. The products are characterized by their hydrophilic properties, remarkable tear strength, dimensional accuracy and excellent resistance to permanent deformation.

- Delivery Form:
2 jars (Base + Catalyst), 400g Each, 400g≈250ml
Setting time in the mouth 3'00"
- Indications:
Two step putty/wash technique
One step putty/wash technique
Crown/bridge work
Inlays, onlays



PERFIT Light Body / Dispenser-Mix

PERFIT Light body is a low viscosity vinyl polysiloxane correction impression material with optimized thixotropy to ensure easy handling. Its exceptional elastic recovery and dimensional change together with its extra hydrophilic properties are essential characteristics with provide high accuracy in impressions.

- Delivery Form:
2 cartridges (Base + Catalyst), 50ml Each
Setting time in the mouth 3'30"
- Indications:
Two step putty/wash technique
Crown/bridge work
Inlay and onlay impressions
Reline impressions



PERFIT Heavy Body / Dispenser-Mix

PERFIT heavy body is a high viscosity vinyl polysiloxane preliminary impression material with excellent carving properties. The advanced thixotropic characteristics makes PERFIT heavy body an ideal impression tool in the hands of all dentists and especially the implantologists.

- Delivery Form:
2 cartridges (Base + Catalyst), 50ml Each
Setting time in the mouth 3'00"
- Indications:
Single step impression technique
Double step impression technique
Crown/bridge work
Inlay and onlay impressions
Functional impressions



PERFIT Heavy Body / Auto-Mix

PERFIT heavy body is a high viscosity vinyl polysiloxane preliminary impression material with excellent carving properties. The advanced thixotropic characteristics makes PERFIT heavy body an ideal impression tool in the hands of all dentists and especially the implantologists.

- Delivery Form:
2 cartridges (Base + Catalyst), 380ml Each
Packaged for automatic mixing machines
- Indications:
Single step impression technique
Double step impression technique
Crown/bridge work
Inlay and onlay impressions
Functional impressions



PERFIT Bite Registration/ Dispenser-Mix

PERFIT Bite Registration is a medium viscosity vinyl polysiloxane material specifically for bite registrations with extremely high Shore A hardness. And also has a fast intraoral setting time and retains enough flexibility for easy trimming or cutting. The outstanding handling characteristics are essential for an accurate occlusal registration at the first attempt.

- Delivery Form:
2 cartridges (Base + Catalyst), 50ml Each
Setting Time In Mouth : 45"
- Indications:
Making accurate occlusal registrations
Standard bite registrations in the end bite position
Key material for needle point registration
Production of small model segment

Restorative Products

Bonding and Etching Material



HugeBond Universal

HugeBond Universal

Light Cure Dental Adhesive

- One-component latest generation self-etch dental adhesive with exceptional dentin and enamel bonding strength
- Self-etch to minimize post operative sensitivity
- Film thickness 0.8μ

1 Bottle (1 bottle*5ml)



TopCEM Ceramic Primer

TopCEM Ceramic Primer

Ceramic Coupling Agent

- A multi-purposes coupling agent for porcelain as well as ceramic restoration
- Quick solvent evaporation to minimize the waiting time
- To be used with HUGE Dual Cure Resin Cement system to ensure a reliable cementation result

1 Bottle (1 bottle*5ml)



P-Etchant

P-Etchant

Phosphoric Acid Etching Gel

- Good rheology character preventing post-operation sensitivity
- Easy dispensing through the 25G bent tips and apply intra-orally
- Easy to be washed and rinsed off

1 Syringe*3ml and 10 dispensing tips (25G needle)



HF-Etchant

HF-Etchant

Hydrofluoric Acid Etching Gel

- Specially designed for porcelain and ceramic surface conditioning.
- Easy dispensing through the 25G bent tips
- Easy to be washed and rinsed off

1 Syringe*1.2ml and 10 dispensing tips (25G needle)

Restorative Products

Indirect Restoration Material



TopCEM

TopCEM

Dual Cure Resin Cement

- Packaged in auto-mixed double barrel cartridge for easy application, or in separate syringes for hand-mixing and minimizing waste
- Low film thickness to ensure restorations' perfect fit each time
- Dual cure feature cuts the chair time
- Excellent flexural modulus and flexural strength

1 Syringe*7G and 10 mixing tip
Shade: TR (Translucent) , A0 (Light+) ,A1 (Light), A2 (Medium), A3 (Dark), White (White Opaque) and Opaque (Universal Opaque)



TopCEM-Veneer

TopCEM-Veneer

Light Cure Veneer Cement

- Seven shades / three opacity levels for best esthetic results
- Light-cure-only system provides excellent color stability
- High bond strengths, low water absorption and solubility guarantee good durability

1 Syringe*2.5G and 10 mixing tip
Shade: TR (Translucent) , A0 (Light+) ,A1 (Light), A2 (Medium), A3 (Dark), White (White Opaque) and Opaque (Universal Opaque)

Meet patient's need with short and long term esthetic effect and good durability
Easy handling



TopCEM-Try in

TopCEM-Try in

Veneer Try-in Gel

- Try-in pastes offer excellent color match to final cured cement

1 Syringe*1.5G and 10 mixing tip
Shade: TR (Translucent) , A0 (Light+) ,A1 (Light), A2 (Medium), A3 (Dark), White (White Opaque) and Opaque (Universal Opaque)



TopCEM-RMGI

TopCEM-RMGI

Resin Modified Glass Ionomer Cement-Luting

- Convenient auto-mixing or hand-mixing
- Time saving: self-adhesive luting cement, no need of etching, priming or bonding
- Higher bond, compressive and flexural strengths provide improved durability and marginal integrity
- Fluoride releasing like conventional glass ionomer cements

1 Syringe*8G and 10 mixing tip
Shade: A2 (Medium)

Restorative Products

Direct Restoration Material



TrusFIL

TrusFIL

Universal Composite Restorative

- Nearly 40% by volume of nanostructured filler loading which results in excellent polishability, long lasting shine appearance and easily shaped property
- Exceptional flexural strengths, low water absorption and solubility guarantee good durability.
- Easier sculpting to reduce the time needed for trimming and finishing

1 Syringe*4G
 Shade: Body: A1, A2, A3, A3.5, A4, B1, B2, B3, B4, C1, C2, C3, C4, D2, D3, D4
 Enamel: EA1, EB1, EC1, ET (Translucent)
 Dentin: OA2 (Opaque, A2)



TrusFIL-Flow

TrusFIL-Flow

Flowable Composite Restorative

- Nanostructured filler loading which results in excellent polishability, long lasting shine appearance and low wear
- Ease of use because of excellent rheological property
- Outstanding Flexural Strength and thixotropic character

1 Syringe*1.5G
 Shade: Body: A1, A2, A3, A3.5, A4, B1, B2, B3, B4, C1, C2, C3, C4, D2, D3, D4
 Enamel: EA1, EB1, EC1, ET (Translucent)
 Dentin: OA2 (Opaque, 15 A2)



TrusFIL-RMGI

TrusFIL-RMGI

Resin Modified Glass Ionomer Cement Filling

- Most suitable for populations with higher incidents of dental decay because of sustainedly fluoride releasing
- Light cure but can be bulk filled with complete dark curing
- Time-saving: no need to use a separate bonding agent or primer when the restorative is filled in a box cavity
- Fluoride releasing like conventional glass ionomer cements

1 Syringe*8G, with 10 mixing tips
 Shade: A1 (Light), A2 (Medium), A3 (Dark), B2 (Yellow)



Sculptor's Gel/Paste

Sculptor's Gel/Paste

Light Cure Modelling Material

- Cures in almost every light curing unit (320-500nm)
- Great dimensional stability when cured
- Burns out completely

Light Cure Modelling Material Gel: 3G/piece, with 10 dispensing tips (20G)
 Light Cure Modelling Material Paste: 30G/box

Cement for Indirect Restoration



Glass Ionomer Cement-Luting

- The ideal thickness (14±2µm) guaranteed the restoration perfectly match the denture
- Chemical bonding occurs among the material, dental tissue and restoration, and no need to use surface treatment agent or adhesive
- Fluoride ions is continuously released from the material and it can prevent the occurrence of secondary caries

Standard Package: 30 g Powder +25 g Liquid
 Sample Package: 10g powder + 10g liquid
 Shade: Transparent



Glass Ionomer Cement-Filling

- Fluoride ions is continuously released from the material and it can prevent the occurrence of secondary caries
- Low solubility of the material ensures a good edge sealing to reduce the occurrence of microleakage
- X-ray radiation resistance

Standard Package: 15 g Powder +12 g Liquid
 Sample Package: 5 g powder + 5g liquid
 Shade: A1, A2, A3



Glass Ionomer Cement-Luting II

- Higher compression capacity(up to 230Mpa)
- The low stickness to applicance improves operation efficiency
- The short net setting time (1'30"-2'00") helps you save time

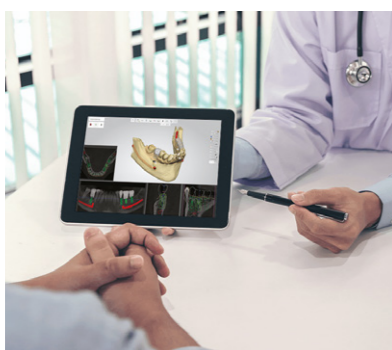
Standard Package: 30 g Powder +25 g Liquid
 Sample Package: 10g powder + 10g liquid
 Shade: Transparent, A1, A2, A3

VINCISMILE GUIDED SURGERY DIGITAL IMPLANT



VinciSmile Guided Surgery

Based on the accurate and comprehensive data captured from patient's CBCT and intraoral situation, VinciSmile experts team precisely designs the depth, angle and direction of implant. The 3D printed surgical guide ensures the implanting surgery more accurate, safe, minimally invasive and efficient.



Diagnosis · Design · Plan



Surgical guide production



Guide the implanting surgery



Effectively Improve Clinical Safety And Patient Comfort.



Accurate and predictable
Accurate implanting site design, comprehensive implanting surgery plan. VinciSmile ensures the safe and successful surgery and the optimal restoration-oriented aesthetic effect



Visualized scheme
The fine visual implanting images make it easier for doctors to communicate with patients.

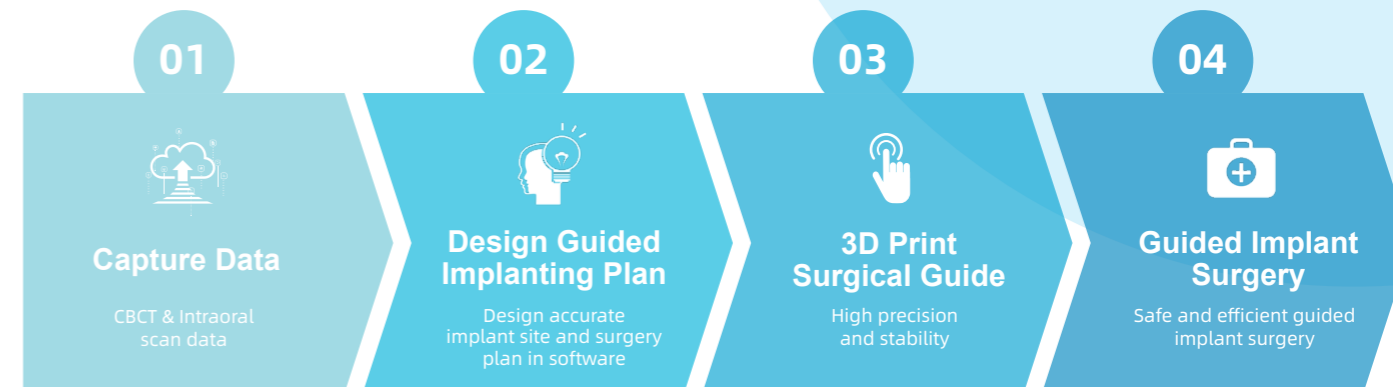


Minimally invasive and efficient
VinciSmile ensures minimal trauma, rapid healing and short surgery time, improving the implanting efficiency and comfortable experience.



Comprehensive supporting equipments
From preoperative intraoral scanner, to 3D printer and resin for surgical guide fabrication, as well as the intraoperative surgery kit. VinciSmile connects treatments from beginning to end.

Digital Guided Implant Workflow



Comprehensive Equipments Available



Available 3D printer and surgical guide resin promise the high precision and speed, allow doctors to easily make a stable and reliable surgical guide, meeting the demands of immediate chairside restoration.



Available guided surgery kit assists to the implanting surgery combined with surgical guide. The ergonomic-designed handle of VinciSmile comprehensive high-quality dental instruments are marked with color and symbol, ensuring more flexible and accurate operation.