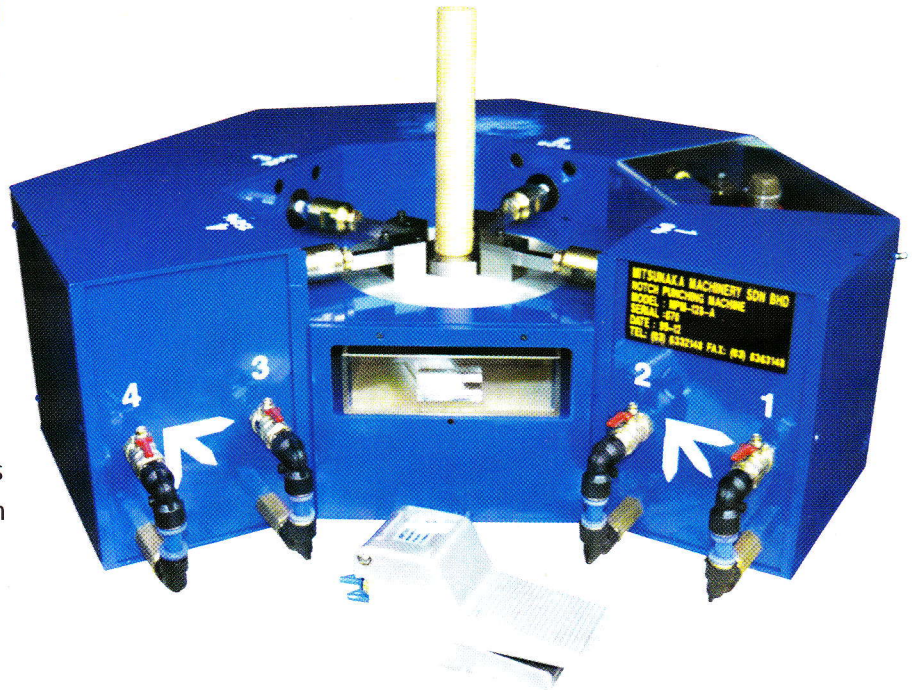


Notches Punching Machine



Model No: NPM-128-3 (3 Cutter Blades)
This model can punch notches with 180°, 150° & 90° angles in one operation.

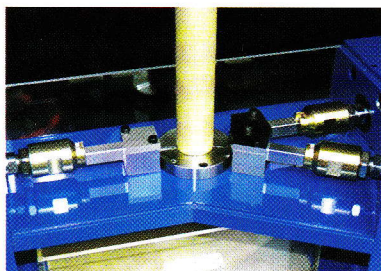


Model No: NPM-128-4 (4 Cutter Blades)
The above model can punch notches with 180°, 150°, 90° & 45° angles in one operation.

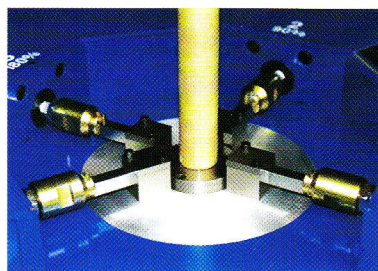
Notches Punching Machine for use on all brands of plain paper fax machine such as SHARP, BROTHER, PANASONIC, MURATEC, TOSHIBA etc.

Specification :

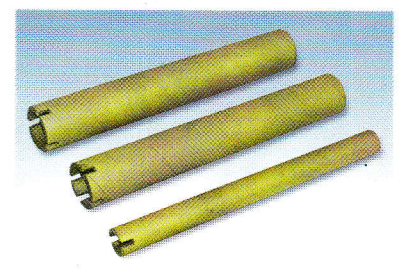
- Punch both barcode printers and fax machine ribbons
- Punch paper or plastic cores widths 13 mm and 26 mm
- Fast, Efficient, Sturdy build, Precision design from Germany
- Compact in size, high speed performance and portable
- It operate on compressor and maintenance free



Process Cutting



Process Cutting



Final Products



Mitsunaka Machinery Sdn. Bhd. Company No. : 201690-H

No. 3, Jalan Emas SD5/1A, Bandar Baru Sri Damansara, 52200 Kuala Lumpur.

Tel : 603-633 2148/635 6706 Fax : 603-636 3148 Online : directlink.to/mitsunaka E-mail : mm_sb@tm.net.my