

ri-scope® LED

high performance for life



Imported & Distributed by:



MNE SOLUTIONS (M) SDN BHD



GDPMD Certificate No: MYG3206037
MDA License No: MDA-0977-DP120



CENTREPIECES OF THE ri-scope® PIONEERING ADVANTAGES

LED illumination

For uniform illumination of the examination field with pure white light (4.000 K). The LED illumination shows colours as they really are. Helpful for efficient diagnostics plus an almost unlimited service life.

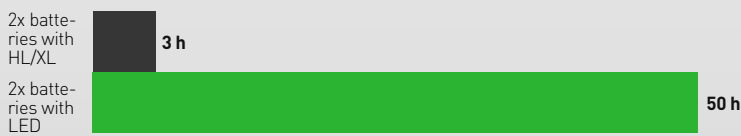


green efficiency

- Low maintenance costs thanks to long LED and battery service lives. Whilst the service life of a xenon light source is only approx. 20 hours, LED burns up to 100.000 hours, i.e. more than 3 years at a go.

Its optimum values in all these fields make the **ri-scope®** a pioneering hand-held instrument for flexible diagnosis.

Battery service lives



Bulb service lives



ri-scope® L OTOSCOPES

PREMIUM OTOSCOPES WITH GLASS OPTICS AND LED / LI-ION TECHNOLOGY

ri-scope® L1

The inexpensive basic model with reduced-reflection, direct illumination (without specula ejection device)

without anti-theft device
XL 2.5 V **No. 10562**
XL 3.5 V **No. 10563**

with anti-theft device
XL 3.5 V **No. 10563-301**

- Direct illumination with 2.5 V xenon, or 3.5 V xenon lamp.
- Bi-directional swivelling optical glass with 3-fold magnification, optional available with operation lens with 4-fold magnification.
- Metal fitting for **e-scope®** / **ri-mini®** / **pen-scope®** specula, compatible with specula by other well-known manufacturers.
- Suitable for pneumatic tests (supplied without ball).
- Large selection of power sources: handy and stable handles, practical chargers and well-conceived diagnostic stations.

ri-scope® L2

The inexpensive F.O. model with 2.5 V/3.5 V xenon or 3.5 V LED lights (without specula ejection device).

without anti-theft device
XL 2.5 V **No. 10564**
XL 3.5 V **No. 10580**
LED 3.5 V **No. 10565**

with anti-theft device
XL 3.5 V **No. 10580-301**
LED 3.5 V **No. 10565-301**

- Fiberoptics for optimal beaming and transmission of the light.
- Bi-directional swivelling, sealing optical glass with 3-fold magnification.
- Optional operation lens with 4-fold magnification available.
- Metal fitting for **e-scope®** / **ri-mini®** / **pen-scope®** specula, compatible with specula by other well-known manufacturers.
- With integrated F.O. throat illuminator
- Suitable for pneumatic tests (supplied without ball)
- Large selection of power sources: handy and stable handles, practical chargers and well-conceived diagnostic stations

ri-scope® L3

The high-end F.O. version with 2.5 V/3.5 V Xenon or 3.5 V LED illumination, specula ejection device and operation lens.

without anti-theft device
XL 2.5 V **No. 10566**
XL 3.5 V **No. 10581**
LED 3.5 V **No. 10567**

with anti-theft device
XL 3.5 V **No. 10581-301**
LED 3.5 V **No. 10567-301**

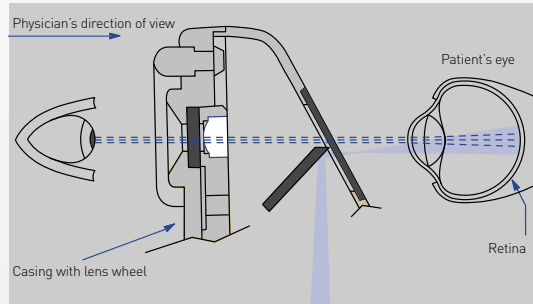
- Fiberoptics for optimal beaming and transmission of the light.
- Bi-directional swivelling optical glass with 3-fold magnification.
- Operation lens with 4-fold magnification and glass mini optic ease the insertion of instruments.
- With integrated F.O. throat illuminator
- Easy-to-operate **SpecEjec®** specula ejection device at the rear side of the otoscope to avoid contamination.
- Fitting for **ri-scope®** specula and enlarged conduit for instruments.
- Suitable for pneumatic tests (supplied without ball).
- Large selection of power sources: handy and stable handles, practical chargers and well-conceived diagnostic stations.



ri-scope® L OPHTHALMOSCOPES PRODUCT RANGE

Optical path

Corneal and iris reflexes are avoided by separation of the parallel observation and illumination beams (Gull strand's principle). The illuminated retinal area is fully visible – even with narrow pupils. Optimum conditions are achieved for ophthalmological examinations.



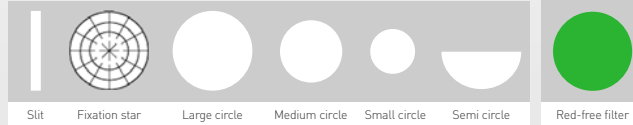
Dioptre disc

Corrective lenses L1/L2 Corrective lenses L3

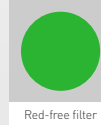
D+ 1-10 | 12 | 15 | 20 | 40
D- 1-10 | 15 | 20 | 25 | 30 | 35

D+ 1- 45 in single steps
D- 1- 44 in single steps

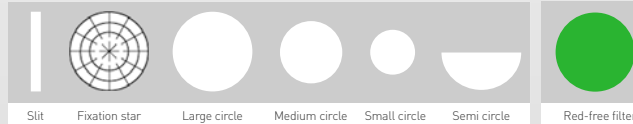
Apertures L1



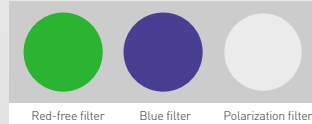
Filters



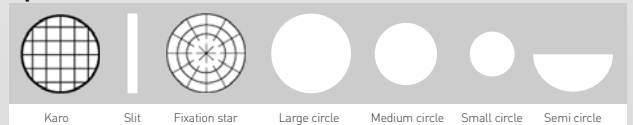
Apertures L2



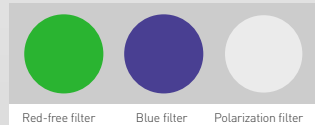
Filters



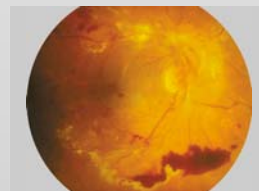
Apertures L3



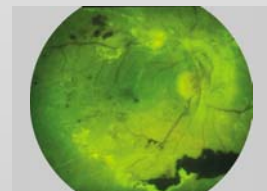
Filters



Healthy fundus



Pathological fundus



Fundus with red free filter

ri-scope® L OPTHALMOSCOPES

Premium-Class Direct Ophthalmoscope with renowned high-performance optics and LED / Li-Ion technology.

ri-scope® L1

The inexpensive basic model with all the important basic functions.

without anti-theft device

XL 2.5 V No. 10568

XL 3.5 V No. 10569

LED 3.5 V No. 10569-203

- Dioptre wheel with 29 corrective lenses Plus 1-10, 12, 15, 20, 40
Minus 1-10, 15, 20, 25, 30, 35
- Easy-to-operate aperture hand-wheel with semi-circle, Small/medium/large circle fixation star, slit and red-free filter with contrast-enhancing effect.
- Includes filter wheel engageable for all apertures with symbol display, red-free filter.
- Optimized high-performance optics with aspherical condenser lens.
- Parallel beam path.
- Dust-proof.
- Large selection of power sources: handy and stable handles, practical chargers and well-conceived diagnostic stations.

with anti-theft device

XL 3.5 V No. 10569-301

LED 3.5 V No. 10594-301

ri-scope® L2

The enhanced basic model with separately engageable red-free, blue and polarization filters for each aperture.

without anti-theft device

XL 2.5 V No. 10570

XL 3.5 V No. 10571

LED 3.5 V No. 10571-203

- Dioptre wheel with 29 corrective lenses Plus 1-10, 12, 15, 20, 40
Minus 1-10, 15, 20, 25, 30, 35
- Easy-to-operate aperture hand-wheel with semi-circle, small/medium/large circle, fixation star, and slit.
- Includes filter wheel engageable for all apertures with symbol display, red-free filter, blue filter and polarization filter.
- Optimized high-performance optics with aspherical condenser lens.
- Parallel beam path.
- Dust-proof.
- Large selection of power sources: handy and stable handles, practical chargers and well-conceived diagnostic stations

with anti-theft device

XL 3.5 V No. 10571-301

LED 3.5 V No. 10595-301

ri-scope® L3

The maximized model with additional focussing device and 89 single-step dioptre values.

without anti-theft device

XL 2.5 V No. 10572

XL 3.5 V No. 10573

LED 3.5 V No. 10573-203

- Corrective lenses for 89 dioptre values Plus 1-45 in single steps, Minus 1-44 in single steps.
- Easy-to-operate aperture hand-wheel with semi-circle, small/medium/large circle, fixation star, slit and grid.
- Includes filter wheel engageable for all apertures with symbol display, red-free filter, blue filter and polarization filter.
- Focussing device with zero retention force for the quick correction of ametropias.
- Dust-proof.
- Large selection of power sources: handy and stable handles, practical chargers and well-conceived diagnostic stations.

with anti-theft device

XL 3.5 V No. 10573-301

LED 3.5 V No. 10596-301

ri-scope® L

OPHTHALMOSCOPES

ri-scope® L Ophthalmoscopes

- Deluxe hard case with safety catch.
- Separate magnifying glass with 5-fold magnification.
- One spare lamp, for Xenon sets only.



Battery handle, Type AA with rheotronic®

For 2 alkaline batteries Type AA
No. 3727 L1 XL 2.5 V

For **ri-accu®** L
No. 3728-550 L1 XL 3.5 V
No. 3814-203 L2 LED 3.5 V
No. 3815-203 L3 LED 3.5 V

Battery handle, Type C with rheotronic®

For 2 alkaline batteries Type C
No. 3722 L1 XL 2.5 V
No. 3723 L2 XL 2.5 V

For **ri-accu®** L
No. 3724-550 L1 XL 3.5 V
No. 3811-203 L2 LED 3.5 V
No. 3812-203 L3 LED 3.5 V

ri-scope® L otoscope/ophthalmoscope

- Tubes with 4 black, re-usable ear specula sizes 2 - 5 mm and each with 3 black 2.5-mm (L1/L2) or 2-mm (L3) and 4-mm disposable ear specula.
- Operation lens with 4-fold magnification available only with L3.
- Deluxe hard case with safety catch.
- Two spare lamps, for Xenon sets only.



Battery handle, Type AA with rheotronic®

For 2 alkaline batteries Type AA
No. 3747
L2 Oto./L1 Oph. XL 2.5 V
No. 3748-203
L2 Oto./L1 Oph. LED 2.5 V

For **ri-accu®** L
No. 3818-203
L2 Oto./L1 Oph. LED 3.5 V

Battery handle, Type C with rheotronic®

For 2 alkaline batteries Type C
No. 3743
L1 XL 2.5 V
No. 3745
L3 Oto./L2 Oph. XL 2.5 V
No. 3746-203
L3 Oto./L2 Oph. LED 2.5 V

For **ri-accu®** L
No. 3744-550
L1 XL 3.5 V
No. 3817-203
L3 Oto./L2 Oph. LED 3.5 V

ri-scope® L

SETS