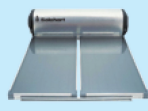
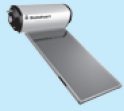


Technical Specification



System Specification	Direct System		Indirect System
	181 L System	302 LF System	302 JF System
Tank Capacity	180 Litres / 40 Gallon	300 Litres / 66 Gallon	300 Litres / 66 Gallon
Family Size	2 – 4 Persons	5 – 8 Persons	5 – 8 Persons
Total Collector	1 X L Collector	2 X L Collector	2 X J Collector
Full Weight (Operating)	275 kg	457 kg	495 kg
Empty Weight (Dry)	92 kg	151 kg	187 kg
Total Dimension (L X W X H)	2.53m X 1.67m X 0.51m	2.53m X 2.48m X 0.51m	2.53m X 2.48m X 0.51m
Heat Preservation	60 – 70 Hours		
Warranty	10 Years		
Cylinder Tank Specification			
Tank Model	180 L	300 LF	300 F
Tank Weight (Empty / Full)	55 kg / 235 kg	81 kg / 381kg	99 kg / 399 kg
Cylinder Material	Steel 2.5 mm		
Sacrificial Anode (steel core)	20 mm Magnesium	35 mm Magnesium	
Coating Material	Primaglaze® Ceramic Lining (Cobalt Blue Enamel)		
Insulation Material	50 mm Polyurethane Foam		
Case	Aluminium Marine Grade 0.4 mm		
End Caps	Polypropylene : Carbon Black, UV Stabilized		
Booster Type	Immersion Copper Sheath Element		
Auxiliary Electric Booster	1.8 Kw, 220 V ~ 250 V	2.4 Kw, 220 V ~ 250 V (1.8Kw optional)	2.4 Kw, 220 V ~ 250 V
Collector (Solar Panel) Specification			
Collector Model	L Collector	L Collector	J Collector
Collector Weight (Empty / Full)**	32 kg / 34 kg	32 kg / 34 kg	45 kg / 49 kg
Amount of Riser	7 risers	7 risers	35 risers
Type of Riser	Copper Tube	Copper Tube	Multi-Flow
Raiser Material	Copper Tube	Copper Tube	Steel
Working Pressure	1000Kpa / 145 Psi		
Absorber surface	Black Polyester Powder Coat		
Tray Material	0.7 mm Marine Grade Aluminium		
Glass Material	3.2 mm Tempered Low Iron		
Heat Insulation	38 mm Polyester Blanket		

Note: All specifications are subjected to change by the manufacturer without prior notice.

**Weight included fitting

Water Supply				
TPR valve setting	kPa	1000	psi	145
Water Connections	cold	Rp 3/4		
	hot	R 1/2		



Shower & Jacuzzi



Dish Washing



Cleaner Laundry



Hotel & Resort

Solahart
HOT WATER *Free* FROM THE SUN™



INTRODUCING THE TOUGHEST SOLAR STORAGE UNDER THE SUN



About us

Solahart is the leading manufacturer of solar hot water system globally and around the world, providing solar hot water to over a million households and businesses world wide. Since 1953, over 1.5 million solar hot water system are install over 82 countries on every continent around the world even a Mount Everest Base Camp and Antarctica.

Over the years, Solahart has strived to improve the efficiency and design of their range, Major investment in research and development and the introduction of the double coated ceramic lining process that put the Solahart name on the world stage.

Solahart enter solar hot water system market since early 80', we currently have a few thousand installations done on residential bungalow, and have a major Solar projects done up for hotel & resorts projects. Solahart are the only solar hot water system company offer an international warranty that include parts and labour from manufacturer.

Today, after more than 65 years as Australia's free energy experts, we're set to turn our brilliant past into an even brighter future.

Indirect system Feature & Benefits

Sealed Jacket round the cylinder, enable Hartgard fluid to flow from the collector around the outside of the storage and quickly transfer heat to the water stored in cylinder

Solahart's Cobalt Blue Enamel formula offers optimum protection against corrosion, scale deposition & design to withstand high temperature & 10 bar pressure

Temperature relief valve releases the water temperature & pressure in tank exceed the recommend 99°C and 1000 kPa

Electric booster to ensure continuous hot water supply in rainy days

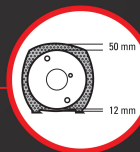
Magnesium Anode Rod

Water Spreader to optimize mixing of hot and cold water

Weatherproof Polypropylene end caps have high durability against corrosion

35 diamond shaped risers have wider area coverage for solar radiation absorption to maximise extract of energy from the Sun

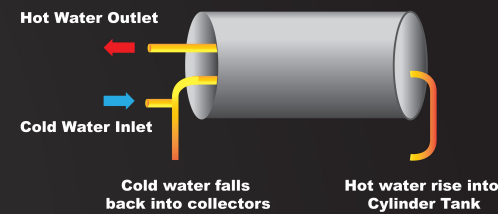
Polyester Blanket Insulation enhances heat loss performance from solar collector



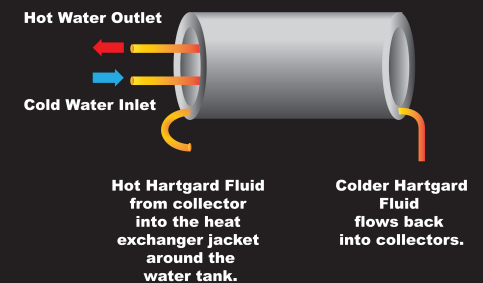
Polyurethane foam insulation to maintain maximum heat retention

Marine Grade Aluminium Stucco outer casing is durable to ultra violet rays and humid climate

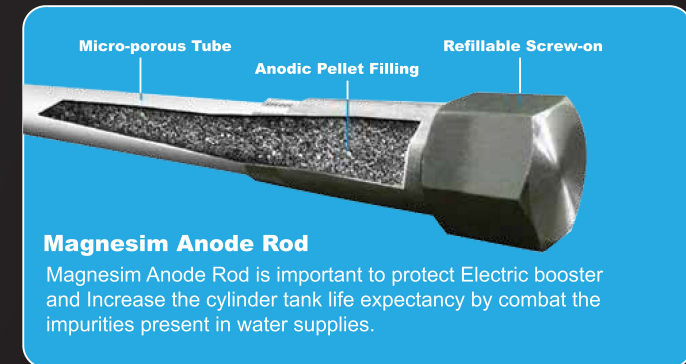
How does Direct & Indirect System Work



Direct System works on the fact that hot water rises. The black polyester powder coated aluminum absorbs the sun energy and transfer it to the water temperature causes it to rise and move into the cylinder tank where it displaces cooler water which then falls back into the solar collectors to be heated by the sun.



Indirect System works on the simple scientific fact collector will absorb the sun energy to heat up the Hartgard fluid in the collector which will rise into the heat exchanger jacket and transferred the heat to the water inside the tank.



Superior Low Iron Tempered Glass is tougher, protective and maximizes heat absorption

Black Powder coating surface offer greater absorption efficiency with high performance

Weatherproof casing made from Marine Grade Aluminium