

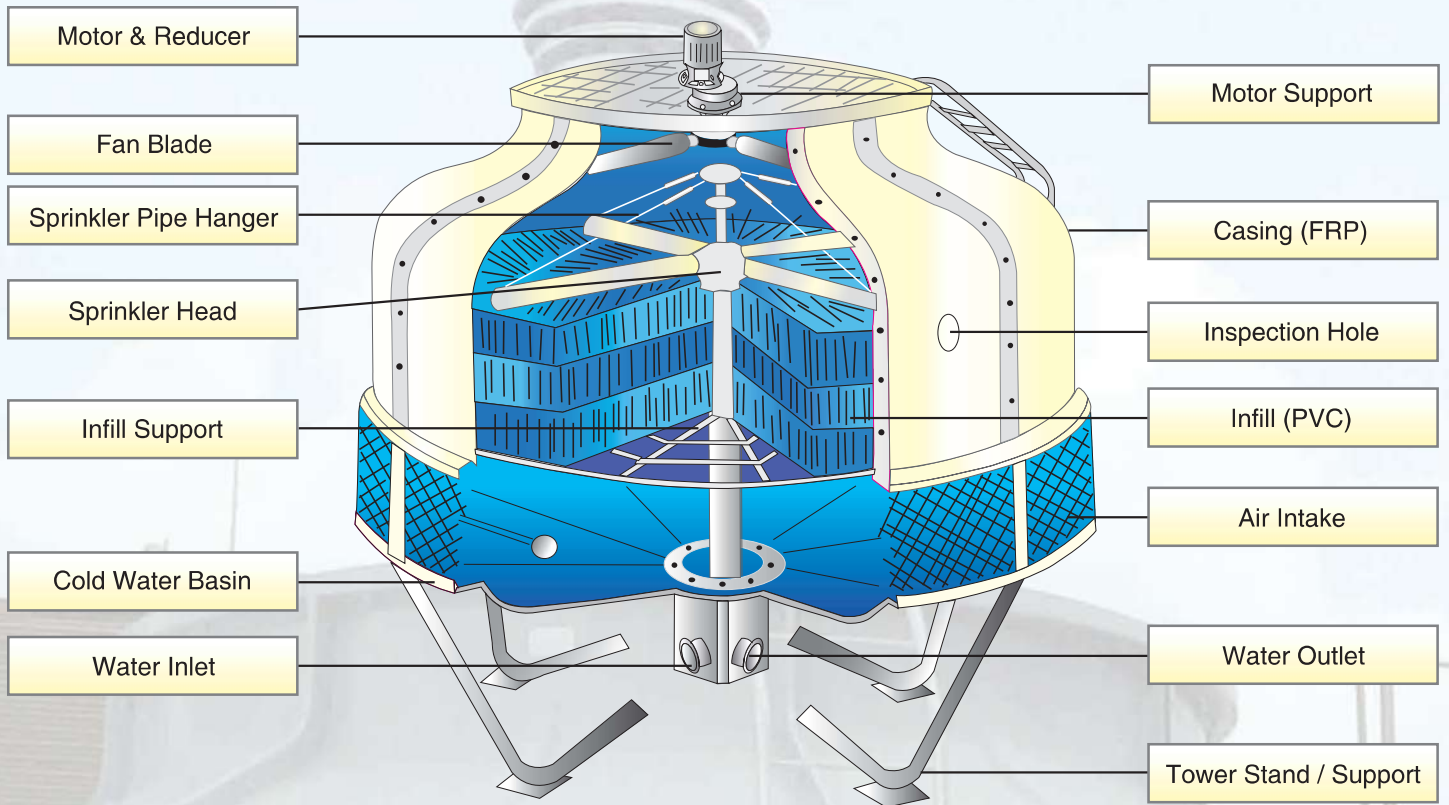
GENIUS

GPT SERIES ROUND, COUNTER FLOW, CT



MEMBER

Cooling Tower Structure



Spare Parts



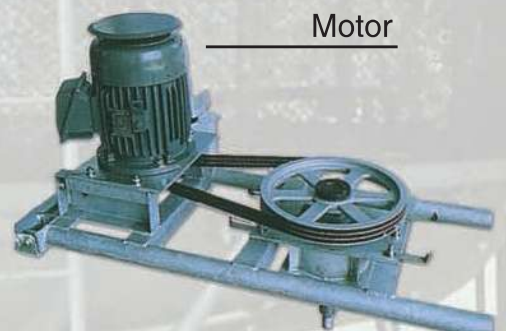
Fan



Infill



Motor



Design Features

Compact Design

GENIUS (GPT) cooling towers are economical model with round shape design thus eliminating special directional requirement and unaffected by prevailing wind directions.

Non-Corrosive Fiberglass Material

Casing and basin are made from strong, durable, UV resistant and corrosive resistant Fiberglass material.

FANS

Induced draft axial fan with adjustable pitch angles are driven by direct drive, V-belt drive system and gear reducer mechanism for different models.

Axial Fans are made of plastic, F.R.P. or aluminium alloy casting.

Water Distribution

A highly efficient rotating sprinkler head system with stand pipe distributes the hot water over the entire PVC filling surface.

The sprinkler system are self-rotating with minimal pump head loss.

Eliminators

The F.R.P. designed drift eliminator to minimize the water carry over when cooling tower operating.

Infill (PVC)

The infill is made of corrugated and ribbed design P.V.C. laid in a ring form for easy replacement and maximize the air/water contact for best heat transfer efficiency.

Inlet Louver

P.V.C. plastic mesh to prevent objects entering the water basin

Splash Mat (Low Noise Model)

Special designed noise absorption splash mat to minimize the water dripping noise level in water basin for low noise model cooling tower.

Useful Information For Cooling Tower Enquiry

Below full informations are required for cooling tower selection:

1. Circulating hot water flow rate to be cooled.
2. Inlet water temperature to cooling tower.
3. Outlet water temperature from cooling tower.
4. Atmospheric wet bulb temperature (Malaysia average 27.2C)
5. Electrical Voltage and frequency.
6. Size of available space for cooling tower.
7. Water quality, eg...clean water, oil or sludge contaminated water etc.

Engineering Data

Model GPT	TR	Water Flow L/S	Dimension (MM)		Pinging Dimension (MM)						Fan Dia (MM)	Motor KW	Weight (Kg)		Noise Level (dBA)
			(D)	(H)	In	Out	OF	DR	MU	QF			Dry	Wet	
5	5	1.08	830	1380	40	40	25	20	15	15	520	0.12	42	120	45
10	10	2.17	1050	1400	40	40	25	20	15	15	670	0.18	65	180	47
15	15	3.25	1050	1450	50	50	25	25	15	15	670	0.37	65	250	48
20	20	4.33	1400	1590	50	50	25	25	15	15	770	0.37	88	340	49
25	25	5.42	1400	1800	65	65	25	25	15	15	770	0.55	103	405	49
30	30	6.550	1600	1700	65	65	25	25	15	15	770	0.75	112	500	53
40	40	8.7	1800	1900	65	65	25	25	20	20	972	1.12	200	620	59
50	50	10.8	2000	1920	80	80	25	25	20	20	972	1.12	210	630	60
60	60	13.0	2000	1930	80	80	25	25	20	20	1172	1.12	280	690	59
70	70	15.17	2200	2000	100	100	25	25	20	25	1172	1.12	300	700	59
80	80	17.33	2200	2010	100	100	25	25	20	25	1172	1.5	320	720	60
100	100	21.67	2600	2300	100	100	25	25	25	25	1475	2.25	472	1360	60
125	125	27.1	2940	2230	125	125	50	25	25	25	1475	2.25	480	1380	61.5
150	150	32.5	3280	2400	125	125	50	50	32	32	1755	3.75	720	2680	61
175	175	37.9	3280	2500	125	125	50	50	32	32	1755	3.75	725	2700	62
200	200	43.3	3700	3000	150	150	50	50	32	32	1755	3.75	850	3500	62
225	225	48.75	3700	3200	150	150	50	50	32	32	2390	5.5	1180	3700	62
250	250	54.2	3700	3200	200	200	50	50	32	32	2390	5.5	1200	3780	63
300	300	65.0	4400	3400	200	200	50	50	32	32	2390	7.5	1500	4800	63
350	350	75.8	4700	3420	200	200	50	50	32	32	2390	7.5	1600	5000	64
400	400	86.7	4800	4200	200	200	50	50	32	32	2950	11.0	2200	5200	64.5
500	500	108.3	5580	4600	250	250	50	50	50	50	2950	11.0	2500	6500	63
600	600	130.0	6600	4380	250	250	50	50	50	50	3500	15.0	3100	10800	65
700	700	151.7	6600	4380	250	250	50	50	50	50	3500	15.0	3600	11000	66
800	800	173.3	7600	5100	300	300	80	80	50	50	3700	22.0	4400	12050	70
1000	1000	216.7	7600	5100	300	300	80	80	50	50	3700	22.0	5000	13000	72

Nominal capacity based on 13L/M/RT, hot water 37°C, cold water 32°C and 27°C ambient wet bulb

OF - Over Flow

MU - Make Up

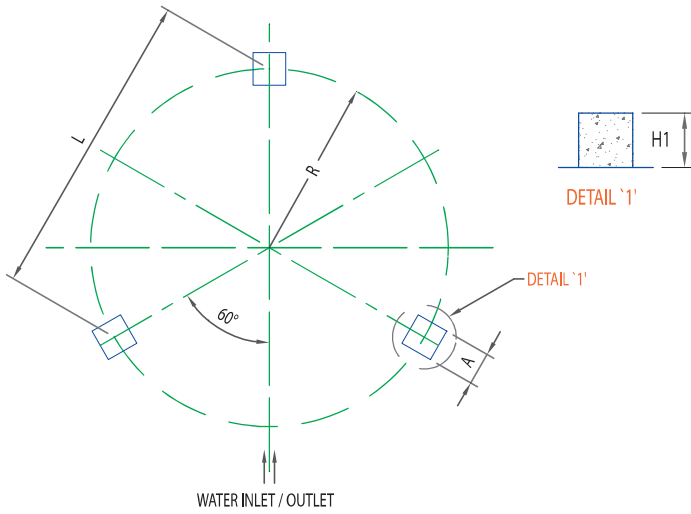
DR - Drain

QF - Quick Filler

We reserve the right to change data and specification without prior notice

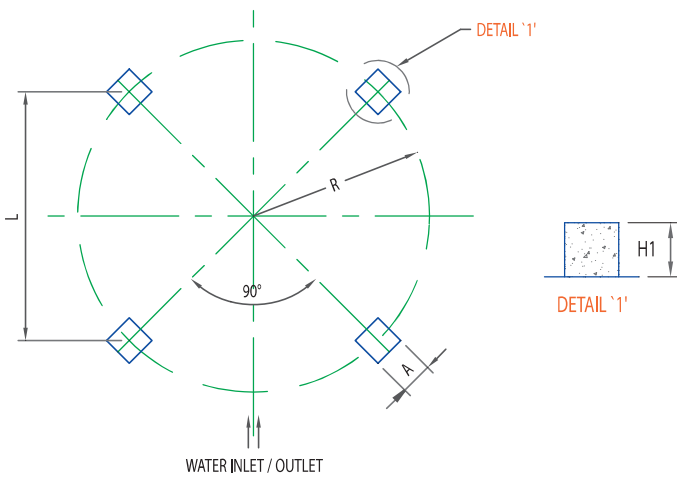
Concrete Foundation

Model: GPT-5, GPT-10, GPT-15, GPT-20 & GPT-25



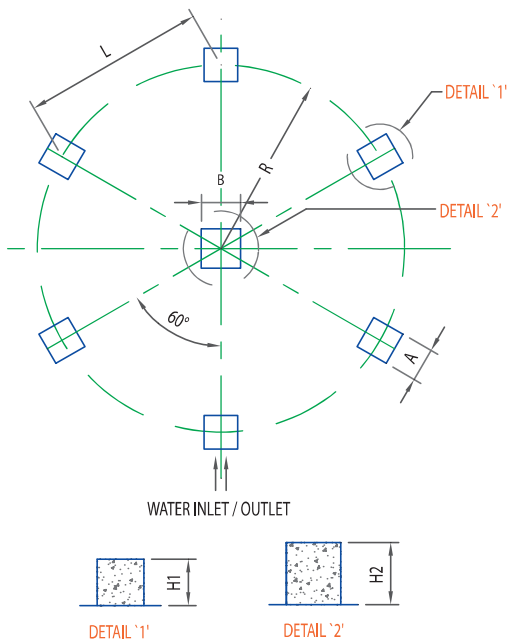
MODEL	R	L	H1	A
GPT-5	275	476	150	200
GPT-10	355	610	150	200
GPT-15	355	610	150	200
GPT-20	560	970	150	200
GPT-25	560	970	150	200

Model: GPT-30, GPT-40, GPT-50 & GPT-60



MODEL	R	L	H1	A
GPT-30	665	940	150	250
GPT-40	735	1039	200	250
GPT-50	840	1188	200	250
GPT-60	840	1188	200	250

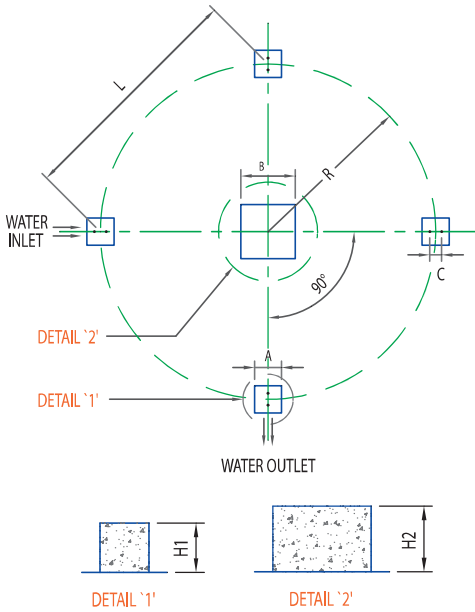
Model: GPT-70, GPT-80, GPT-100, GPT-125, GPT-150 & GPT-175



MODEL	R	L	H1	H2	A1	B
GPT-70	880	880	200	240	250	250
GPT-80	880	880	200	240	250	250
GPT-100	1175	1175	300	350	300	350
GPT-125	1310	1310	300	350	300	350
GPT-150	1430	1430	300	340	300	350
GPT-175	1430	1430	300	340	300	350

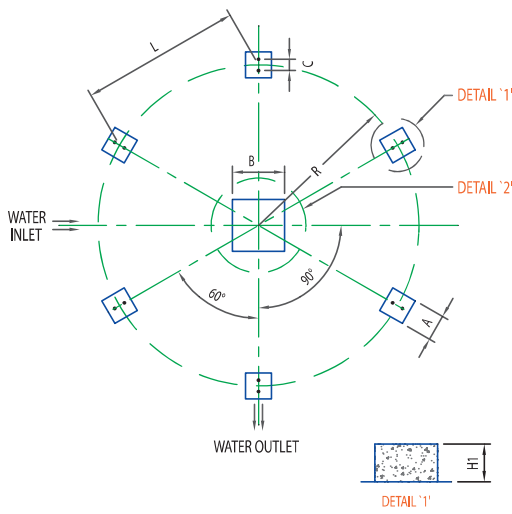
Concrete Foundation

Model: GPT-200, GPT-225, GPT-250, GPT-300, GPT 350 & GPT 400



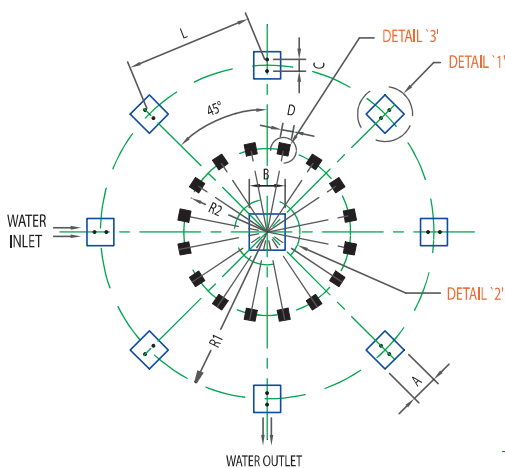
MODEL	R	L	H1	H2	A	B	C
GPT-200	1651	2335	300	400	300	600	130
GPT-225	1651	2335	300	400	300	600	130
GPT-250	1651	2335	300	400	300	600	130
GPT-300	1982	2803	300	400	300	600	140
GPT-350	2148	3039	300	400	300	600	140
GPT-400	2337	3306	300	300	400	600	100

Model: GPT-500



MODEL	R	L	H1	H2	A	B	C
GPT-500	2692	2680	300	300	500	600	100

Model: GPT-600, GPT-700, GPT-800 & GPT-1000



MODEL	R1	R2	L	H1	H2	H3	A	B	C	D
GPT-600	3240	1800	2480	300	400	300	500	800	140	200
GPT-700	3240	1800	2480	300	400	300	500	800	140	200
GPT-800	3750	2078	2870	300	400	300	500	800	140	200
GPT-1000	3750	2078	2870	300	400	300	500	800	140	200



Project Reference





Genius Cooling Towers Sdn Bhd (904955-K)

35-2, Jalan Puteri 4/1,

Bandar Puteri 47100 Puchong, Selangor.

Tel : 03-8060 2020

Fax : 03-8060 2000

E-mail: sales@genius.net.my

Website: www.genius.net.my