

PRODUCT DATA SHEET

SikaCeram[®]-850 Design

Epoxy floor / wall tile coloured grout for joints 2–15 mm

DESCRIPTION

SikaCeram[®]-850 Design is a 2-part, epoxy floor / wall tile coloured grout dispensed using a double side-by-side cartridge. It has a smooth glossy finish which provides a durable chemical resistant surface for demanding applications and high cleanliness requirements.

USES

Grouting tiles for the following interior residential and commercial building applications:

- Wet rooms
- Shopping malls
- Hospitals
- Commercial / Industrial kitchens
- Food industry

CHARACTERISTICS / ADVANTAGES

- Grout Joint range: 2–15 mm
- Easy application using cartridge gun
- 2-part double side-by-side cartridge with static mixer nozzle
- Floor and wall application
- Available in many colours
- Low shrinkage
- Abrasion resistant
- Good chemical resistance
- Good workability
- Stain resistant and easy to clean

PRODUCT INFORMATION

Chemical Base	Epoxy resin and special additives			
Packaging	400 ml double side-by-side cartridge Refer to current price list for packaging variations.			
Appearance / Colour	Colours:			
	White	Pearl	Beige	Jasmine
	Goldenrod	Gold	Glitter Gold	Glitter Grey
	Glitter white	Grey	Coffee	Dark
Shelf Life	12 months from date of production			
Storage Conditions	Product must be stored in original, unopened and undamaged packaging in dry conditions. Always refer to packaging.			
Density	Part A	~1,17 kg/l		
	Part B	~1,12 kg/l		

TECHNICAL INFORMATION

Abrasion Resistance	0,02 g	(GB/T 1768-2006)
Tensile Adhesion Strength	7,6 MPa	(JC/T 547-2005)
Chemical Resistance	Resistant to many chemicals. Contact Sika Technical Services for additional information.	
Skid / Slip Resistance		
Joint width	2–15 mm	No obvious sagging (GB/T 9264-1988)

APPLICATION INFORMATION

Consumption The consumption is dependent on the size of the tiles, joint width and depth.

Consumption guide: m² / cartridge

Tile size	Joint width		
Centimetres	2 mm	2,5 mm	3 mm
5*5	1	0,5	0,25
10*10	2	1,5	1
20*20	3,5	2,5	2
30*60	7,5	5,5	4
60*60	10,5	7,5	5,5
80*80	14	10	7

These figures are theoretical and do not allow for any additional material due to surface porosity, surface profile, variations in level or wastage etc.

Ambient Air Temperature +5 °C min. / +35 °C max.

Substrate Temperature +5 °C min. / +35 °C max.

Applied Product Ready for Use

Use	Waiting time
Surface drying time	~3 hours
Pedestrian traffic	~24 hours
Full traffic	~72 hours

Values determined in laboratory conditions: +23 °C ± 2 °C, R.H. 50 % ± 5 %. Higher temperatures will reduce the indicated waiting time, lower temperatures increase waiting time.

BASIS OF PRODUCT DATA

All technical data stated in this Product Data Sheet are based on laboratory tests. Actual measured data may vary due to circumstances beyond our control.

LIMITATIONS

- Always perform a test on cleanability and staining before grouting any type of cladding with an absorbent or porous surface.
- Always perform a preliminary test when requiring a colour contrast between grout and tiles.
- Do not add anything to the product that is not specified in this Product Data Sheet.
- Do not use for any applications that are not explicitly described in this Product Data Sheet.

ECOLOGY, HEALTH AND SAFETY

For information and advice on the safe handling, storage and disposal of chemical products, users shall refer to the most recent Material Safety Data Sheet (MSDS) containing physical, ecological, toxicological and other safety-related data.

APPLICATION INSTRUCTIONS

SUBSTRATE QUALITY / PRE-TREATMENT

Check joints are dry, clean, clear of excess adhesive, contaminants and tile joint spacers. Remove from joint before grout application.

Avoid any ponding / standing water on the surface. Surface must not be damp to touch.

MIXING

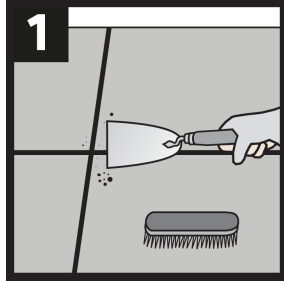
1. Unscrew the cartridge cap

2. Pull out the cap
3. Screw on the static mixer nozzle
4. Place the cartridge into the application gun ready for use
5. Pump gun at least 2 times until both parts extrude as a homogeneous colour. Do not use this material
6. Release the gun pressure and clean the static mixer nozzle opening with a cloth

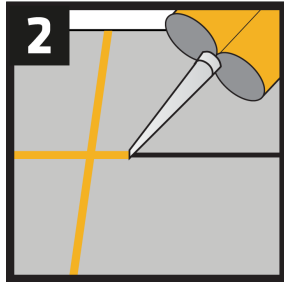
APPLICATION

Application without masking tape

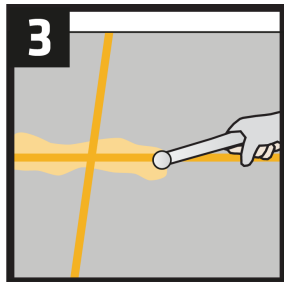
Check adhesive has fully set before grouting. Clean the joint and remove dust, dirt prior grouting.



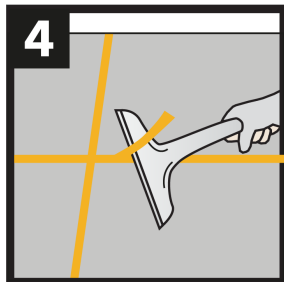
After making sure that the two components are blended well, extrude SikaCeram®-850 Design into the joint ensuring that it comes into full contact with the sides of the joint and avoiding any air entrapment



As soon as possible after application, smooth the grout with a finishing tool (metallic ball) to obtain a smooth finish



After 6 to 8 hours, remove any excess product on the tile with a sharp scraper



Use product within 20 minutes otherwise change the mixing nozzle

SIKA HONGKONG LTD.

Rm.1507-12, Blk A, New Trade Plaza,
6 On Ping Street, Shatin, N.T., H.K.
Phone: +852 26868108
Fax: +852 26453671
Mail: marketing@hk.sika.com
Website: www.sika.com.hk



Product Data Sheet

SikaCeram®-850 Design
May 2021, Version 01.02
02172030100000004

CLEANING OF TOOLS

Clean all tools and application equipment with Sika® Colma Cleaner immediately after use. Hardened material can only be removed mechanically.

LOCAL RESTRICTIONS

Please note that as a result of specific local regulations the performance of this product may vary from country to country. Please consult the local Product Data Sheet for the exact description of the application fields.

LEGAL NOTES

The information, and, in particular, the recommendations relating to the application and end-use of Sika products, are given in good faith based on Sika's current knowledge and experience of the products when properly stored, handled and applied under normal conditions in accordance with Sika's recommendations. In practice, the differences in materials, substrates and actual site conditions are such that no warranty in respect of merchantability or of fitness for a particular purpose, nor any liability arising out of any legal relationship whatsoever, can be inferred either from this information, or from any written recommendations, or from any other advice offered. The user of the product must test the product's suitability for the intended application and purpose. Sika reserves the right to change the properties of its products. The proprietary rights of third parties must be observed. All orders are accepted subject to our current terms of sale and delivery. Users must always refer to the most recent issue of the local Product Data Sheet for the product concerned, copies of which will be supplied on request. It may be necessary to adapt the above disclaimer to specific local laws and regulations. Any changes to this disclaimer may only be implemented with permission of Sika® Corporate Legal in Baar.

SikaCeram-850Design-en-HK-(05-2021)-1-2.pdf