

DESCRIPTION :

weberprim SP1 is a single-component product. It is a specifically design acrylic based primer. It is a multi-functional primer / water resistant sealer / key coat to enhance bonding between various substrates such as plaster, renders, spray tiles, brick work and concrete

weberprim SP1 can act as a water barrier and a bonding agent on shear walls, concrete walls, shower walls and etc

USES :

- Concrete walls
- Shear walls
- Floor screeds
- Shower walls
- Exterior/interior wall plasters
- Lightweight blocks
- Cement/Gypsum board
- Primer for Spray Tiles, brick work

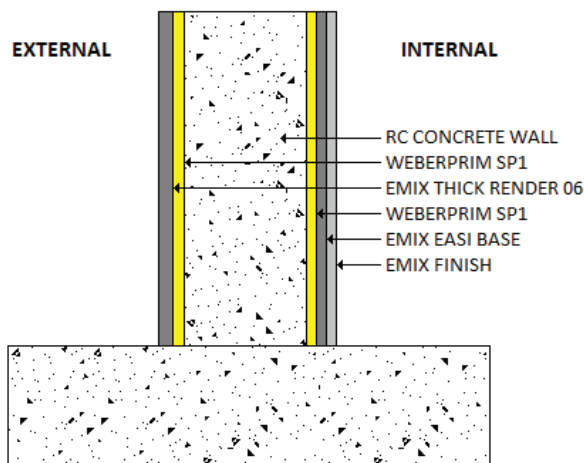
FEATURES AND BENEFITS :

- Eco-friendly with low VOC.
- Water resistant.
- Enhances bonding between concrete and plasters.
- Reduces hollowness.
- Reduces risk of plaster cracks.
- Chemically and mechanically bonds subsequent plaster layers to concrete substrates.

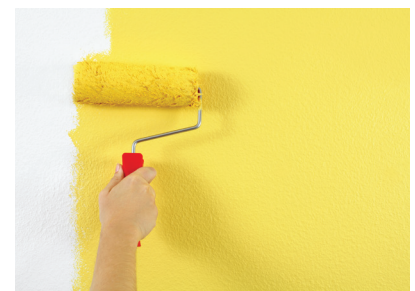
PREPARATION :

- New concrete should be cured for at least 28 days and should have a pull off strength $\geq 1.5 \text{ N/mm}^2$. Cement or mineral based substrates must be prepared mechanically using abrasive blast cleaning or scarifying equipment to remove cement laitance and to achieve an open textured surface.
- Loose friable material and weak concrete must be completely removed and surface defects such as blowholes and voids must be fully exposed.
- The substrate must have sufficient gradient for surface water to run off easily without any ponding water.

TECHNICAL DATA	
Colour	: Yellow
Shelf Life	: 12 months from date of production
Service temperature	: Between 5°C to 40°C
Storage temperature	: Between 5°C to 35°C
Substrate	: No standing water / condensation on the substrate
Air Humidity	: Maximum 80% RH
Dew point	: Surface temperature must be +3°C above the dew point
Density	: 1.05 kg/l \pm 0.05
Viscosity	: 75 to 80 KU
Pull Off Strength ASTM D7234	: $\approx 1.0 \text{ N/mm}^2$
Interval Time Before Overcoat	: Plastering, Rendering or Tile Fixing can be carried out after 30 minutes and within 72 hours; after application of weberprim SP1



RC CONCRETE WALL - PLASTERING SYSTEM



CONSTRAINTS :

- Ensure that temperature does not drop below 8°C and that the relative humidity does not exceed 80%
- Overcoat within 7 days. Dust accumulation over the primer may affect the bonding to the subsequent layers
- Do not allow temporary ponding to remain between coats on any horizontal surfaces until the final coating has totally cured. Brush or mop off any surface water away during this time.

APPLICATION :

weberprim SP1 can be apply by thick hair brush, short-piled lamb skin roller or a suitable spray machine. It can be used alongside with **weberdry PUM** coat for wet areas waterproofing.

Plastering or Tile Fixing can be carried out after 30 minutes and within 72 hours; after application of **weberprim SP1**.

**ensure that dust/dirt has not stuck onto the primer before the Plastering or Tile Fixing work.*

CURING :

The **weberprim SP1** must not become wet while it is still curing. It should be protected from direct sunlight, rain and pedestrian traffic

weberprim SP1 does not have a drying time as it is designed to remain tacky after application.

COVERAGE :

Approximately **190 to 210** m² per 20kg plastic pail (depends on substrate quality, flatness, absorption etc).

PACKING :

5 & 20kg plastic pails.

SHELF LIFE / STORAGE :

12 months when stored in dry conditions of normal ambient temperature between 5°C and 35°C.

TECHNICAL SERVICES :

For further details or recommendation please contacts our Technical Advisory/Specification Center at 603-6038 9498 (KL) & 604-626 2830 (Penang)

PRECAUTION :

For information and advice on the safe handling, storage and disposal of chemical products, users shall refer to the most recent Safety Data Sheet containing physical, ecological, toxicological and other safety-related data

Conditions Of Sales :

Sold subject to Company's Condition of Sale, which is available upon request.

Note :

All instruction and information are provided by us for the general guidance only and are believed to be accurate and complete. Users must exercise special care and caution depending on the conditions and particular purpose of usage and are responsible to ensure that they have consulted our latest literature. To the maximum extent allowed by law, Saint-Gobain Weber (M) Sdn Bhd, its representatives, agents or distributors shall be under no liability for any loss of profits and other economic or physical losses.

Marketing Offices :

SAINT-GOBAIN WEBER (M) SDN BHD (169772-A)

SELANGOR :

No. 29 & 31, Jalan TIAJ 2/1, Taman Industri Alam Jaya,
42300 Bandar Puncak Alam, Selangor D. E, Malaysia.

Tel : 603-6038 9498 / 9497 / 9487 Fax : 603-6038 9507

Website : www.mys.weber

E-Mail : info.webermalaysia@saint-gobain.com

**Member Of :**

- FMM, Malaysia
- MCI, Malaysia
- MBAM, Malaysia
- MGBC (Malaysia Green Building Confederation)
- SGBC (Singapore Green Building Council)
- SIRIM Working Group - MS 1294 & MS 1295

OHSMS CERTIFIED TO ISO 45001 (CERT NO: MY16 / 02151)
EMS CERTIFIED TO ISO 14001 (CERT NO: MY13 / 04546)
QMS CERTIFIED TO ISO 9001 (CERT NO: CI / 3693)

BONDING AGENT