

YK500XP

Dust-proof & drip-proof type



- Arm length 500mm
- Maximum payload 10kg

Note. Built-to-order product.
Contact us for the delivery period.

Ordering method

YK500XP			RCX240		R			BB
Model	Z axis stroke	Cable length	Controller	Usable for CE	Regenerative unit	Expansion I/O <small>Note 1</small>	Network option	Battery
	200: 200mm 300: 300mm	3L: 3.5m (Standard) 5L: 5m 10L: 10m		No entry: Standard E: CE marking	R: RGU-2	N, P: Standard I/O 16/8 N1, P1: 40/24 N2, P2: 64/40 N3, P3: 88/56 N4, P4: 112/72	No entry: None CC: CC-Link DN: DeviceNet PB: Profibus EN: Ethernet YC: YG-Link <small>Note 2</small>	BB: 4 pcs

Note 1. Use N to N4 when NPN is selected on the I/O board, and P to P4 when PNP is selected.
Note 2. Available only for the master.

Specifications

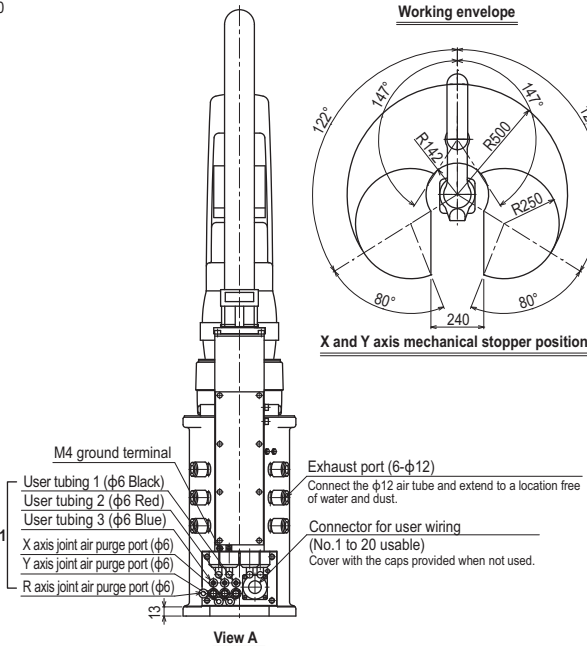
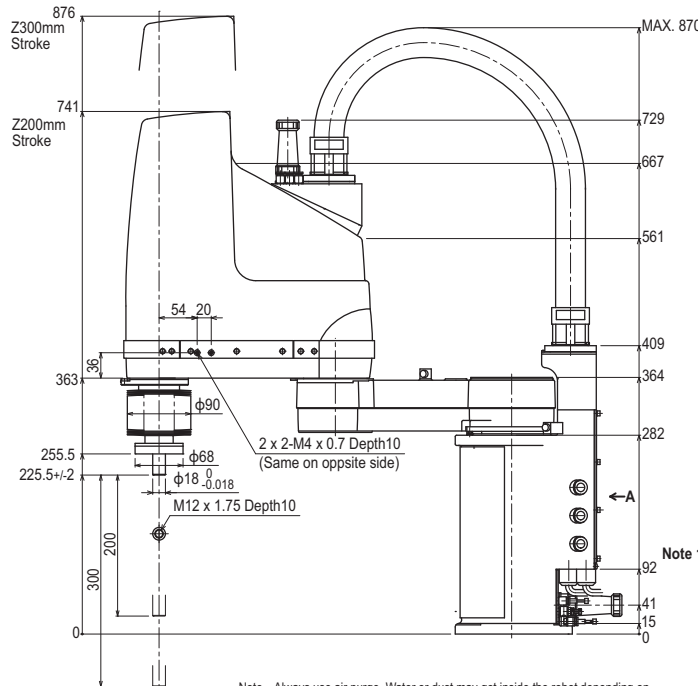
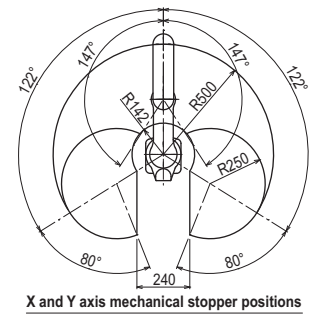
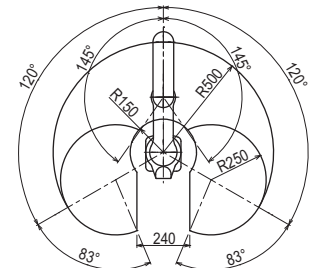
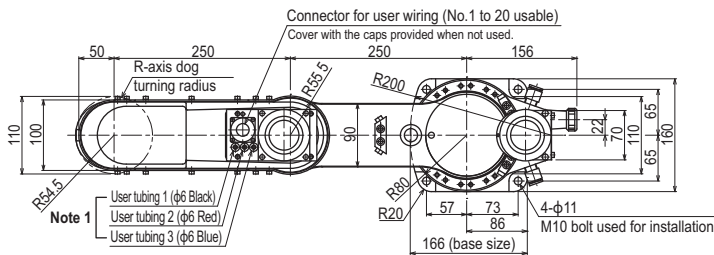
		X-axis	Y-axis	Z-axis	R-axis
Axis specifications	Arm length (mm)	250	250	200 300	-
	Rotation angle (°)	+/-120	+/-145	-	+/-360
AC servo motor output (W)		400	200	200	100
Deceleration mechanism	Speed reducer	Harmonic drive	Harmonic drive	Ball screw	Harmonic drive
	Transmission method	Direct-coupled		Timing belt transmission	Timing belt transmission
	Motor to speed reducer Speed reducer to output	Direct-coupled		Direct-coupled	Direct-coupled
Repeatability <small>Note 1</small> (XYZ mm) (R °)		+/-0.02		+/-0.01	+/-0.005
Maximum speed (XYZ m/sec) (R °/sec)		4.9		1.7	876
Maximum payload (kg)		10			
Standard cycle time with 2kg payload <small>Note 2</small> (sec)		0.53			
R-axis tolerable moment of inertia <small>Note 3</small> (kgm ²)		0.12			
User wiring (sq x wires)		0.2 x 20			
User tubing (Outer diameter)		φ6 x 3			
Travel limit		1.Soft limit 2.Mechanical stopper (X,Y,Z axis)			
Robot cable length (m)		Standard: 3.5 Option: 5,10			
Weight (kg) (Excluding robot cable)		30			

Note 1. This is the value at a constant ambient temperature. (X,Y axes)
Note 2. There are limits to acceleration coefficient settings.

Controller

Controller	Power capacity (VA)	Operation method
RCX240-R	1500	Programming / I/O point trace / Remote command / Operation using RS-232C communication

YK500XP



Note. Always use air purge. Water or dust may get inside the robot depending on the usage environment.

APPLICATION
Compact
single-axis robots
TRANSERO

Single-axis robots
FLIP-X

Linear motor
single-axis robots
PHASER

Catapult
robots
XY-X

SCARA
robots
YK-XG

Pick & place
robots
YP-X

CLEAN

CONTROLLER INFORMATION

Tiny

Small type

Medium type

Large type

Ceiling-mount / inverse type

Dust-proof & drip-proof type