

YK350XGP

Dust-proof & drip-proof type

- Arm length 350mm
- Maximum payload 4kg

Ordering method

YK350XGP - 150			RCX240					BB	
Model	Z axis stroke	Tool flange	Cable	Controller	Usable for CE	Expansion I/O <small>Note 1</small>	Network option	iVY System	Battery
	150: 150mm	No entry: None F: With tool flange	3L: 3.5m 5L: 5m 10L: 10m		No entry: Standard E: CE marking	N, P: Standard I/O 16/8 N1, P1: 40/24 N2, P2: 64/40 N3, P3: 88/56 N4, P4: 112/72	No entry: None CC: CC-Link DN: DeviceNet PB: Profibus EN: Ethernet YC: YC-Link <small>Note 2</small>	No entry: None VY: iVY (Vision) TR: iVY+Light +Tracking LC: iVY+Light	BB: 4 pcs

Note 1. Use N to N4 when NPN is selected on the I/O board, and P to P4 when PNP is selected.
Note 2. Available only for the master.

Specifications

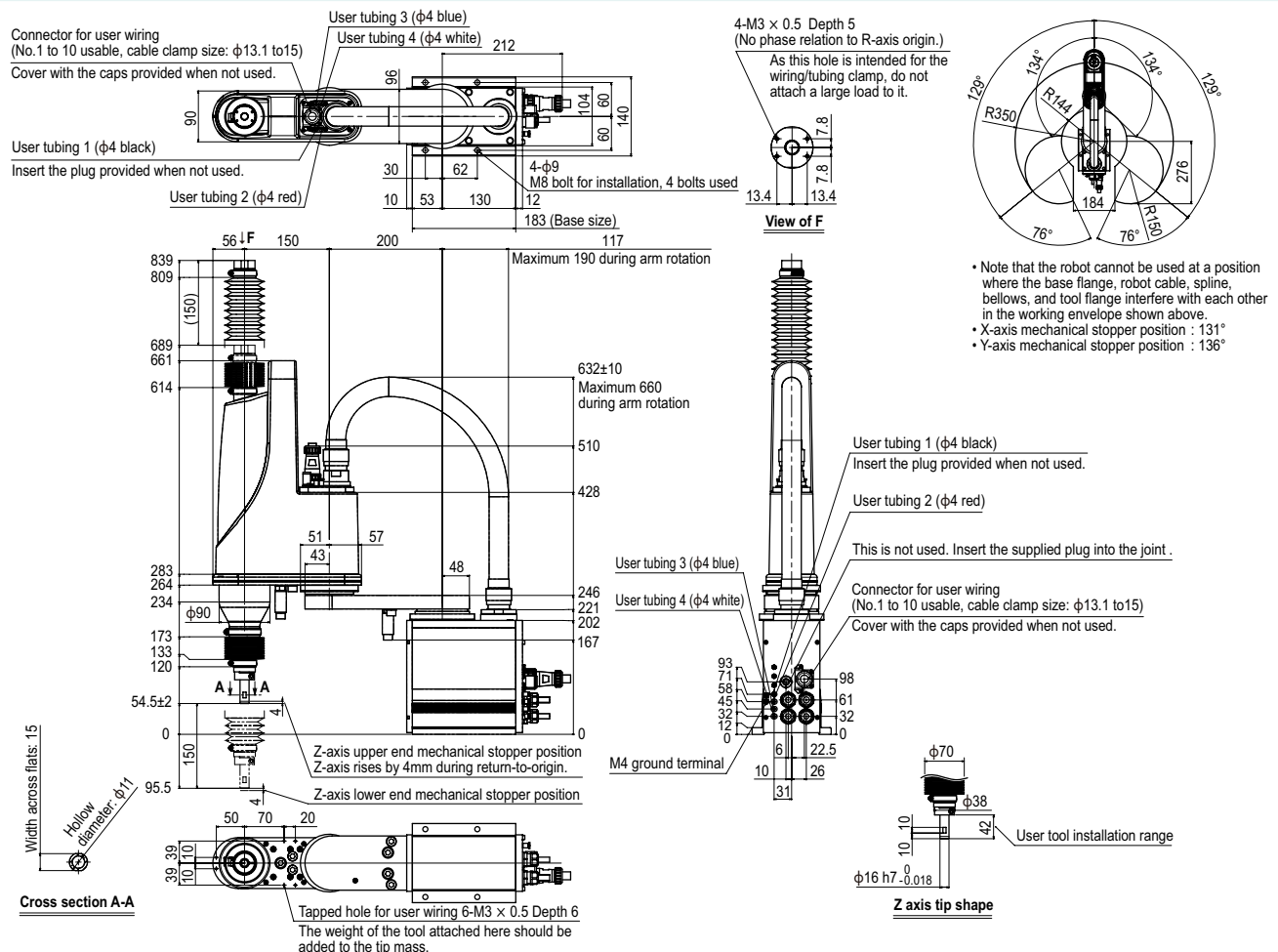
		X-axis	Y-axis	Z-axis	R-axis
Axis specifications	Arm length (mm)	200	150	150	-
	Rotation angle (°)	+/-129	+/-134	-	+/-360
AC servo motor output (W)		200	150	50	100
Deceleration mechanism	Speed reducer	Harmonic drive	Harmonic drive	Ball screw	Harmonic drive
	Transmission method	Direct-coupled			
	Motor to speed reducer Speed reducer to output	Direct-coupled			
Repeatability <small>Note 1</small> (XYZ: mm) (R: °)		+/-0.01		+/-0.01	+/-0.004
Maximum speed (XYZ: m/sec) (R: °/sec)		5.6		1.1	1020
Maximum payload (kg)		4			
Standard cycle time with 2kg payload <small>Note 2</small> (sec)		0.57			
R-axis tolerable moment of inertia <small>Note 3</small> (kgm ²)		0.05			
Protection class <small>Note 4</small>		Equivalent to IP65 (IEC 60529)			
User wiring (sq x wires)		0.2x10			
User tubing (Outer diameter)		φ4x4			
Travel limit		1.Soft limit 2.Mechanical stopper (X,Y,Z axis)			
Robot cable length (m)		Standard: 3.5 Option: 5,10			
Weight (kg)		22			

Note 1. This is the value at a constant ambient temperature. (X,Y axes)
Note 2. When reciprocating 25mm in vertical direction and 300mm in horizontal direction (rough-positioning arch motion).
Note 3. There are limits to acceleration coefficient settings.
Note 4. Do not use robots where the bellows section is directly exposed to water jet. Contact our distributor for information on drip-proof structure preventing liquid other than water.

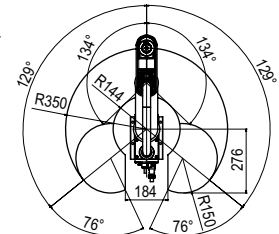
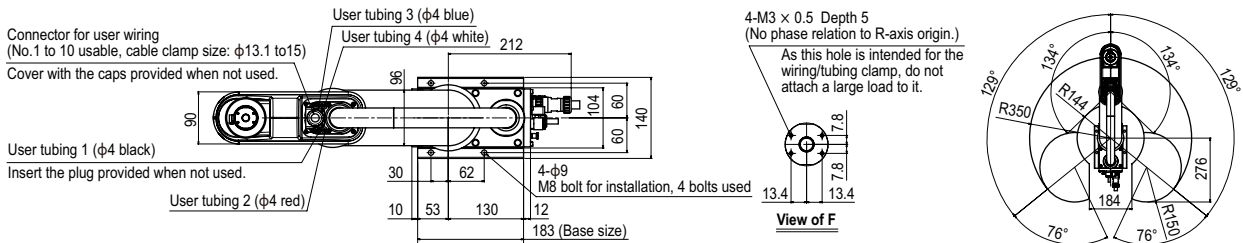
Controller

Controller	Power capacity (VA)	Operation method
RCX240	1000	Programming / I/O point trace / Remote command / Operation using RS-232C communication

YK350XGP



YK350XGP Tool flange mount type



- Note that the robot cannot be used at a position where the base flange, robot cable, spline, bellows, and tool flange interfere with each other in the working envelope shown above.
- X-axis mechanical stopper position : 131°
- Y-axis mechanical stopper position : 136°

