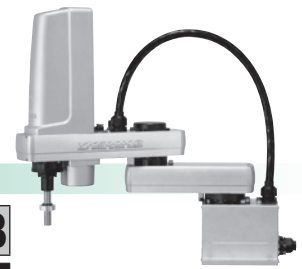


APPLICATION
Compact
single-axis robots
TRANSERVO
Single-axis robots
FLIP-X
Linear motor
single-axis robots
PHASER
Catenian
robots
XY-X
SCARA
robots
YK-XG
Pick & place
robots
YP-X
CLEAN
CONTROLLER
Tiny
Small type
Medium type
Large type
Ceiling-mount /
inverse type
Dust-proof
& drip-proof
type

YK500XG

Standard type: Medium type



- Arm length 500mm
- Maximum payload 10kg

Ordering method

YK500XG			RCX240		R3			BB
Model	Z axis stroke	Cable length	Controller	Usable for CE	Regenerative unit	Expansion I/O	Network option	Battery
	200: 200mm 300: 300mm	3L: 3.5m (Standard) 5L: 5m 10L: 10m		No entry: Standard E: CE marking	R3: RGU-3	N, P: Standard I/O 16/8 N1, P1: 40/24 N2, P2: 64/40 N3, P3: 88/56 N4, P4: 112/72	No entry: None CC: CC-Link DN: DeviceNet PB: Profibus EN: Ethernet YC: YC-Link <small>Note 2</small>	BB: 4 pcs

Note 1. Use N to N4 when NPN is selected on the I/O board, and P to P4 when PNP is selected.
Note 2. Available only for the master.

Specifications

		X-axis	Y-axis	Z-axis		R-axis
Axis specifications	Arm length (mm)	200	300	200	300	-
	Rotation angle (°)	+/-130	+/-145	-	-	+/-360
AC servo motor output (W)		400	200	200	200	200
Deceleration mechanism	Speed reducer	Harmonic drive	Harmonic drive	Ball screw	Harmonic drive	
	Transmission method	Direct-coupled				
	Motor to speed reducer	Direct-coupled				
	Speed reducer to output	Direct-coupled				
Repeatability <small>Note 1</small> (XYZ mm) (R °)		+/-0.01		+/-0.01		+/-0.004
Maximum speed (XYZ m/sec) (R °/sec)		7.6		2.3	1.7	1700
Maximum payload (kg)		10				
Standard cycle time with 2kg payload <small>Note 2</small> (sec)		0.45				
R-axis tolerable moment of inertia <small>Note 3</small> (kgm ²)		0.30				
User wiring (sq × wires)		0.2 × 20				
User tubing (Outer diameter)		φ6 × 3				
Travel limit		1.Soft limit 2.Mechanical stopper (X,Y,Z axis)				
Robot cable length (m)		Standard: 3.5 Option: 5,10				
Weight (kg) (Excluding robot cable)		30				

Note 1. This is the value at a constant ambient temperature. (X,Y axes)
Note 2. When reciprocating 300mm in horizontal and 25mm in vertical directions.
Note 3. There are limits to acceleration coefficient settings. See P.432.

Controller

Controller	Power capacity (VA)	Operation method
RCX240-R3	1700	Programming / I/O point trace / Remote command / Operation using RS-232C communication

YK500XG

