

YK500XGL

Standard type: Medium type

- Arm length 500mm
- Maximum payload 5kg

Ordering method

YK500XGL - 150				RCX240S					BB	
Model	Z axis stroke 150: 150mm	Tool flange No entry: None F: With tool flange	Hollow shaft No entry: None S: With hollow shaft	Cable 3L: 3.5m 5L: 5m 10L: 10m	Controller	Usable for CE No entry: Standard E: CE marking	Expansion I/O <small>Note 1</small> N, P: Standard I/O 16/8 N1, P1: 40/24 N2, P2: 64/40 N3, P3: 88/56 N4, P4: 112/72	Network option No entry: None CC: CC-Link DN: DeviceNet PB: Profibus EN: Ethernet YC: YC-Link <small>Note 2</small>	iVY System No entry: None VY: iVY (Vision) TR: iVY+Light +Tracking LC: iVY+Light	Battery BB: 4 pcs

Note 1. Use N to N4 when NPN is selected on the I/O board, and P to P4 when PNP is selected.
Note 2. Available only for the master.

Specifications

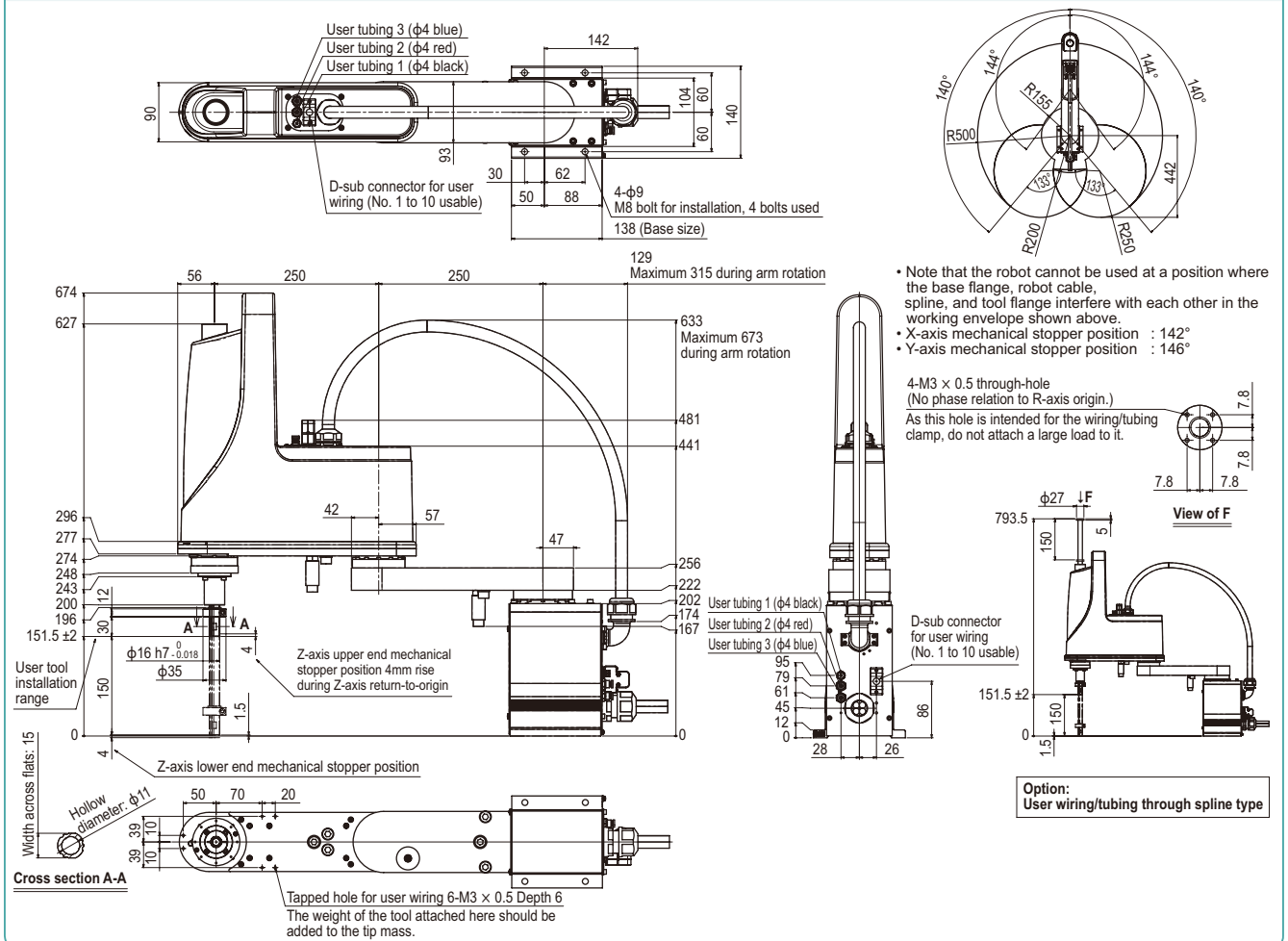
		X-axis	Y-axis	Z-axis	R-axis
Axis specifications	Arm length (mm)	250	250	150	-
	Rotation angle (°)	+/-140	+/-144	-	+/-360
AC servo motor output (W)		200	150	50	100
Deceleration mechanism	Speed reducer	Harmonic drive	Harmonic drive	Ball screw	Harmonic drive
	Transmission method	Direct-coupled			
	Motor to speed reducer Speed reducer to output	Direct-coupled			
Repeatability <small>Note 1</small> (XYZ: mm) (R: °)		+/-0.01		+/-0.01	+/-0.004
Maximum speed (XYZ: m/sec) (R: °/sec)		5.1		1.1	1020
Maximum payload (kg)		5			
Standard cycle time: with 2kg payload <small>Note 2</small> (sec)		0.59			
R-axis tolerable moment of inertia <small>Note 3</small> (kgm ²)		0.05kgm ² (0.5kgfcm ²)			
User wiring (sq × wires)		0.2 × 10			
User tubing (Outer diameter)		φ4 × 3			
Travel limit		1.Soft limit 2.Mechanical stopper (X,Y,Z axis)			
Robot cable length (m)		Standard: 3.5 Option: 5,10			
Weight (kg)		21			

Note 1. This is the value at a constant ambient temperature. (X,Y axes)
Note 2. When reciprocating 300mm in horizontal and 25mm in vertical directions.
Note 3. There are limits to acceleration coefficient settings.

Controller

Controller	Power capacity (VA)	Operation method
RCX240S	1000	Programming / I/O point trace / Remote command / Operation using RS-232C communication

YK500XGL



YK500XGL Tool flange mount type

