

YK250XH

Standard type: Small type



- Arm length 250mm
- Maximum payload 3kg

Ordering method

YK250XH - 150			RCX240				BB
Model	Z axis stroke	Cable length	Controller	Usable for CE	Expansion I/O <small>Note 2</small>	Network option	Battery
	150: 150mm (MAX: 300mm <small>Note 1</small>)	3L: 3.5m (Standard) 5L: 5m 10L: 10m		No entry: Standard E: CE marking	N, P: Standard I/O 16/8 N1, P1: 40/24 N2, P2: 64/40 N3, P3: 88/56 N4, P4: 112/72	No entry: None CC: CC-Link DN: DeviceNet PB: Profibus EN: Ethernet YC: YC-Link <small>Note 3</small>	BB: 4 pcs

Note 1. The products with Z axis stroke of 200 mm or more are built to the order. Contact us for the delivery period, specifications, external appearance, etc.
 Note 2. Use N to N4 when NPN is selected on the I/O board, and P to P4 when PNP is selected.
 Note 3. Available only for the master.

Specifications

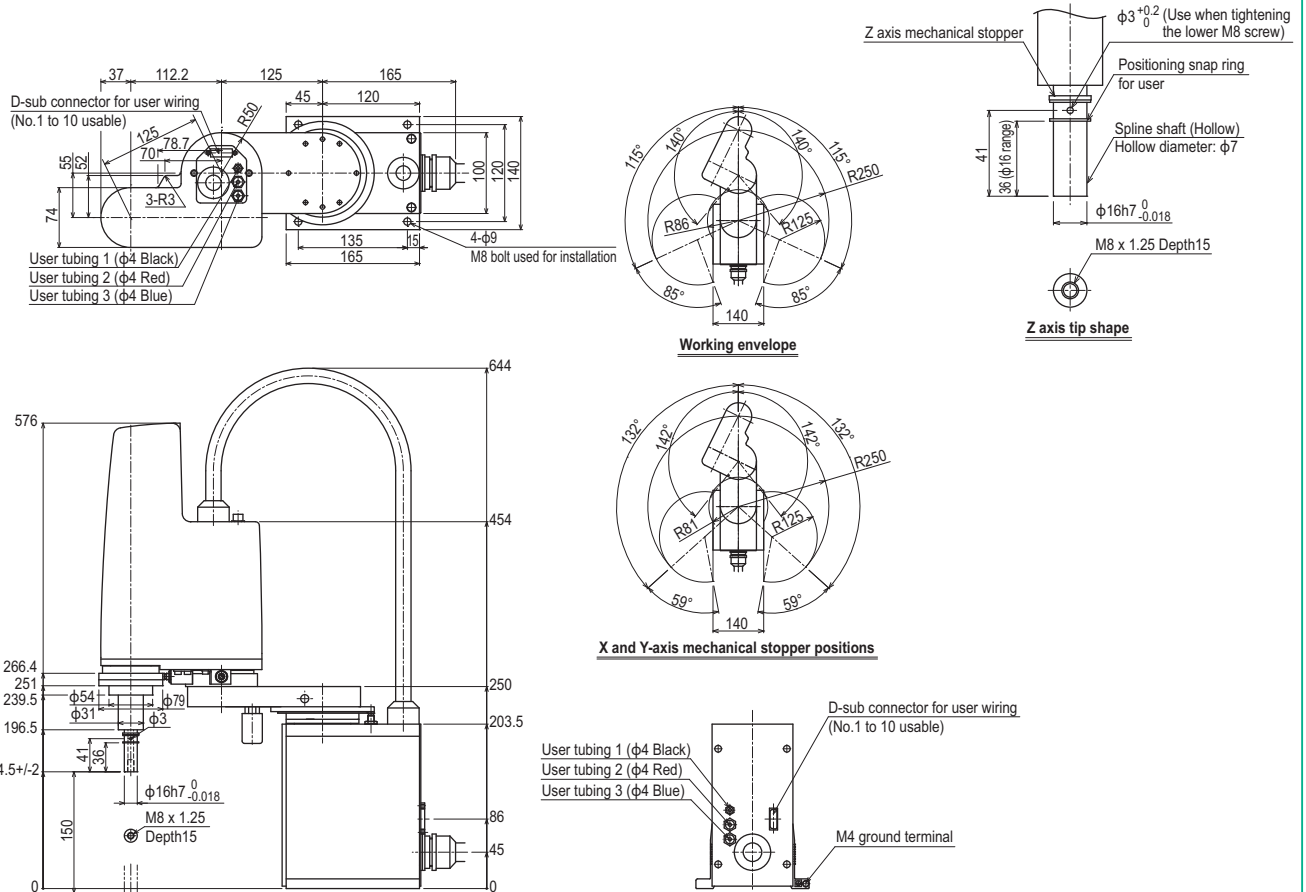
		X-axis	Y-axis	Z-axis	R-axis
Axis specifications	Arm length (mm)	125	125	150	-
	Rotation angle (°)	+/-115	+/-140	-	+/-360
AC servo motor output (W)		200	100	100	100
Deceleration mechanism	Speed reducer	Harmonic drive	Harmonic drive	Ball screw	Harmonic drive
	Transmission method	Motor to speed reducer	Direct-coupled	Timing belt transmission	Timing belt transmission
		Speed reducer to output	Direct-coupled	Direct-coupled	Direct-coupled
Repeatability <small>Note 1</small> (XYZ mm) (R °)		+/-0.01		+/-0.01	+/-0.005
Maximum speed (XYZ m/sec) (R °/sec)		4.0		1.0	1020
Maximum payload (kg)					3
Standard cycle time with 2kg payload <small>Note 2</small> (sec)					0.54
R-axis tolerable moment of inertia <small>Note 3</small> (kgm ²)					0.05
User wiring (sq × wires)					0.2 × 10
User tubing (Outer diameter)					φ4 × 3
Travel limit		1.Soft limit 2.Mechanical stopper (X,Y,Z axis)			
Robot cable length (m)		Standard: 3.5 Option: 5,10			
Weight (kg) (Excluding robot cable)					15

Note 1. This is the value at a constant ambient temperature. (X,Y axis)
 Note 2. When reciprocating 300mm in horizontal and 25mm in vertical directions.
 Note 3. There are limits to acceleration coefficient settings. See P.431.

Controller

Controller	Power capacity (VA)	Operation method
RCX240	1000	Programming / I/O point trace / Remote command / Operation using RS-232C communication

YK250XH



APPLICATION
 TRANSERO
 Compact single-axis robots

FLIP-X
 Single-axis robots

PHASER
 Linear motor single-axis robots

XY-X
 Cartesian robots

YK-XG
 SCARA robots

YP-X
 Pick & place robots

CLEAN
 CLEAN

CONTROLLER INFORMATION
 Tiny
 Small type
 Medium type
 Large type
 Ceiling-mount / inverse type
 Dust-proof & drip-proof type