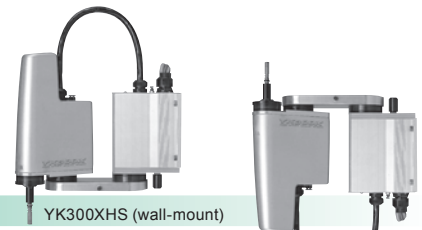


YK300XHS

Wall-mount / inverse type

- Arm length 300mm
- Maximum payload 3kg

Note. Built-to-order product.
Contact us for the delivery period.



Ordering method

YK300XHS		150		RCX240				BB
Model	Installation method W: Wall-mount (same as per external view) U: Inverse wall-mount (upside down)	Z axis stroke 150: 150mm	Cable length 3L: 3.5m (Standard) 5L: 5m 10L: 10m	Controller	Usable for CE No entry: Standard E: CE marking	Expansion I/O N, P: Standard I/O 16/8 N1, P1: 40/24 N2, P2: 64/40 N3, P3: 88/56 N4, P4: 112/72	Network option No entry: None CC: CC-Link DN: DeviceNet PB: Profibus EN: Ethernet YC: YC-Link	Battery BB: 4 pcs

- Note 1. When installing the robot, always follow the specifications.
Do not install the ceiling-mount robot upside down or do not install the inverse type robot to a ceiling.
Incorrect installation can cause trouble or malfunction.
- Note 2. Use N to N4 when NPN is selected on the I/O board, and P to P4 when PNP is selected.
- Note 3. Available only for the master.
See P.039 for details on YC-Link system.

Specifications

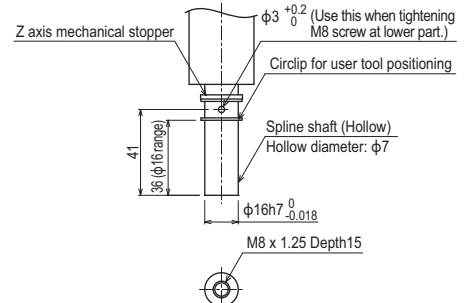
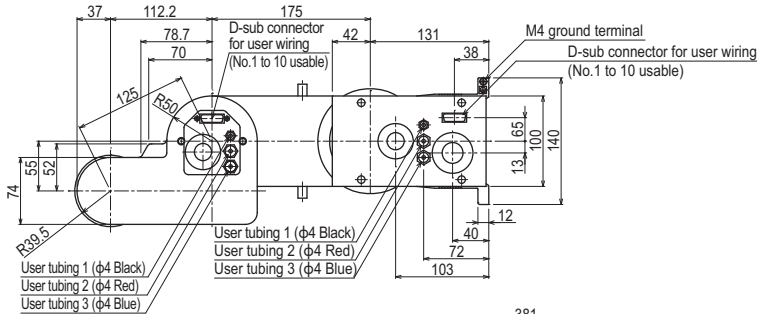
		X-axis	Y-axis	Z-axis	R-axis
Axis specifications	Arm length (mm)	175	125	150	-
	Rotation angle (°)	+/-115	+/-140	-	+/-360
AC servo motor output (W)		200	100	100	100
Deceleration mechanism	Speed reducer	Harmonic drive	Harmonic drive	Ball screw	Harmonic drive
	Transmission method	Direct-coupled	Direct-coupled	Timing belt transmission	Timing belt transmission
Speed reducer to output		Direct-coupled	Direct-coupled	Direct-coupled	Direct-coupled
Repeatability (XYZ mm) (R °)		+/-0.01		+/-0.01	+/-0.005
Maximum speed (XYZ m/sec) (R °/sec)		4.4		1.0	1020
Maximum payload (kg)		3			
Standard cycle time with 2kg payload (sec)		0.54			
R-axis tolerable moment of inertia (kgm ²)		0.05			
User wiring (sq x wires)		0.2 x 10			
User tubing (Outer diameter)		φ4 x 3			
Travel limit		1.Soft limit 2.Mechanical stopper (X,Y,Z axis)			
Robot cable length (m)		Standard: 3.5 Option: 5,10			
Weight (kg) (Excluding robot cable)		15			

- Note 1. This is the value at a constant ambient temperature. (X,Y axes)
- Note 2. There are limits to acceleration coefficient settings.

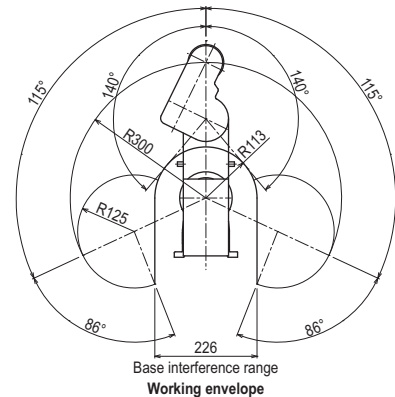
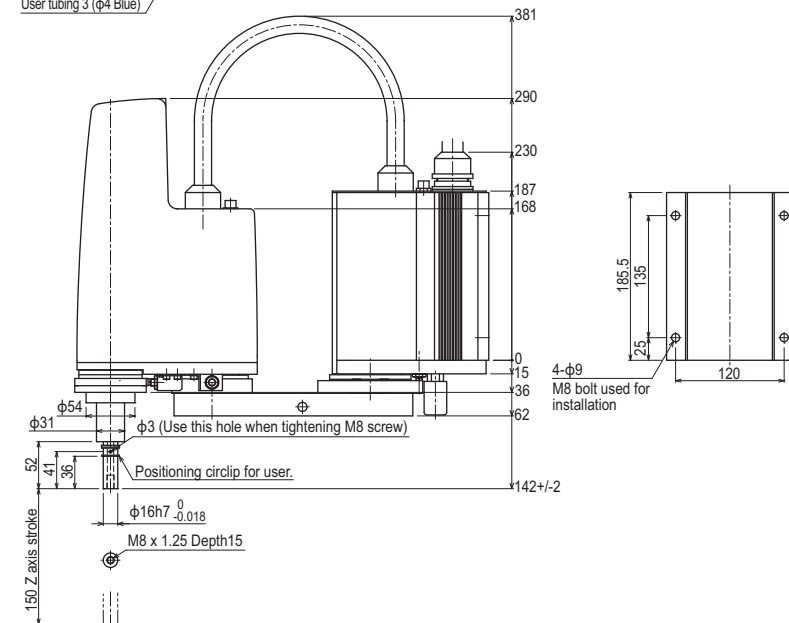
Controller

Controller	Power capacity (VA)	Operation method
RCX240	1000	Programming / I/O point trace / Remote command / Operation using RS-232C communication

YK300XHS



Z axis tip shape



Use caution to prevent interference with installation wall.

Note. Inverse type is installed upside down.