

YK800XS

Ceiling-mount / inverse type

- Arm length 800mm
- Maximum payload 20kg

Note. Built-to-order product.
Contact us for the delivery period.



YK800XS (ceiling-mount)
YK800XS (inverse ceiling-mount)

Ordering method

| | | | | | | | | | |
|----------------|--|--|--|-------------------|---|--------------------------------------|--|--|-----------------------------|
| YK800XS | | | | RCX240 | | R | | | BB |
| Model | Installation method N: Ceiling-mount (same as per external view) U: Inverse ceiling-mount (upside down) | Z axis stroke 200: 200mm 400: 400mm | Cable length 3L: 3.5m (Standard) 5L: 5m 10L: 10m | Controller | Usable for CE No entry: Standard E: CE marking | Regenerative unit R: RGU-2 | Expansion I/O N, P: Standard I/O 16/8 N1, P1: 40/24 N2, P2: 64/40 N3, P3: 88/56 N4, P4: 112/72 | Network option No entry: None CC: CC-Link DN: DeviceNet PB: Profibus EN: Ethernet YC: YC-Link | Battery BB: 4 pcs |

- Note 1. When installing the robot, always follow the specifications.
Do not install the ceiling-mount robot upside down or do not install the inverse type robot to a ceiling.
Incorrect installation can cause trouble or malfunction.
- Note 2. Use N to N4 when NPN is selected on the I/O board, and P to P4 when PNP is selected.
- Note 3. Available only for the master.
See P.039 for details on YC-Link system.

Specifications

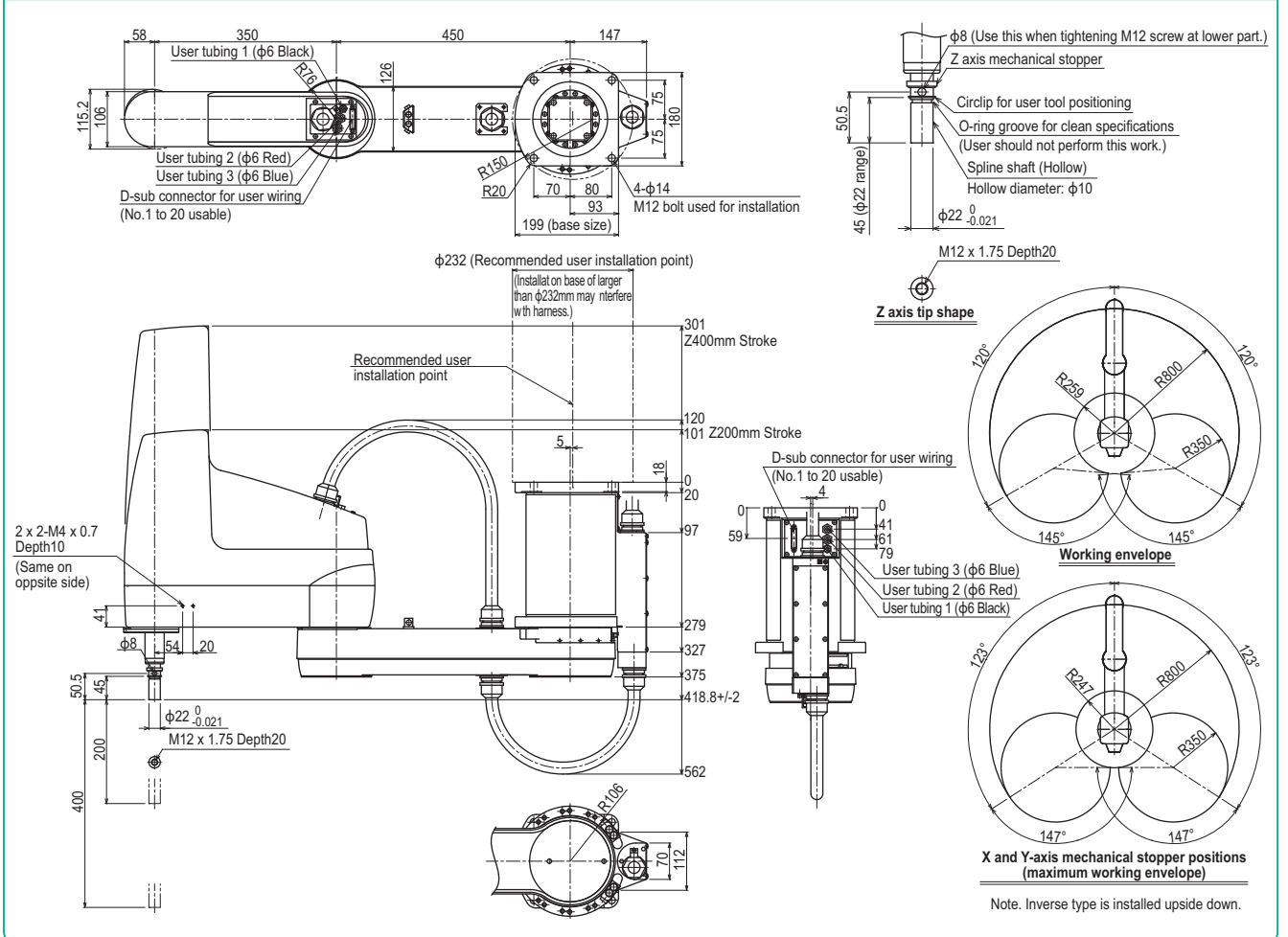
| Axis specifications | Arm length (mm) | | X-axis | Y-axis | Z-axis | R-axis |
|--|---------------------|-------------------------|--|----------------|--------------------------|--------------------------|
| | Rotation angle (°) | | | 450 | 350 | 200 400 |
| AC servo motor output (W) | | | +/-120 | +/-145 | - | +/-360 |
| | | | 800 | 400 | 400 | 200 |
| Deceleration mechanism | Speed reducer | | Harmonic drive | Harmonic drive | Ball screw | Harmonic drive |
| | Transmission method | Motor to speed reducer | Direct-coupled | | Timing belt transmission | Timing belt transmission |
| | | Speed reducer to output | Direct-coupled | | Direct-coupled | Direct-coupled |
| Repeatability ^{Note 1} (XYZ mm) (R °) | | | +/-0.02 | | +/-0.01 | +/-0.005 |
| Maximum speed (XYZ m/sec) (R °/sec) | | | 7.3 | | 1.7 | 600 |
| Maximum payload (kg) | | | 20 | | | |
| Standard cycle time with 2kg payload ^{Note 2} (sec) | | | 0.57 | | | |
| R-axis tolerable moment of inertia ^{Note 3} (kgm ²) | | | 0.32 | | | |
| User wiring (sq x wires) | | | 0.2 x 20 | | | |
| User tubing (Outer diameter) | | | φ6 x 3 | | | |
| Travel limit | | | 1.Soft limit 2.Mechanical stopper (X,Y,Z axis) | | | |
| Robot cable length (m) | | | Standard: 3.5 Option: 5,10 | | | |
| Weight (kg) (Excluding robot cable) | | | 57 | | | |

- Note 1. This is the value at a constant ambient temperature. (X,Y axes)
Note 2. There are limits to acceleration coefficient settings.

Controller

| Controller | Power capacity (VA) | Operation method |
|------------|---------------------|--|
| RCX240-R | 2000 | Programming / I/O point trace / Remote command / Operation using RS-232C communication |

YK800XS



APPLICATION
TRANSERO
Compact single-axis robots

FLIP-X
Single-axis robots

PHASER
Linear motor single-axis robots

XY-X
Cartesian robots

YK-XG
SCARA robots

YP-X
Pick & place robots

CLEAN

CONTROLLER INFORMATION

Trimy

Small type

Medium type

Large type

Ceiling-mount / inverse type

Dust-proof & drip-proof type