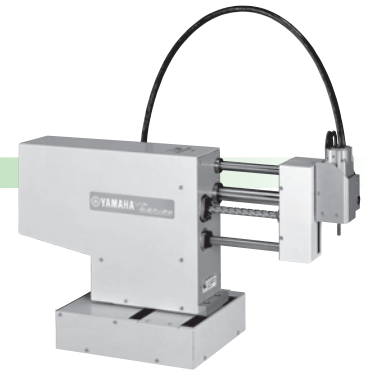


# YP340X 4 axes

## Ordering method

|               |   |               |                                     |  |   |           |
|---------------|---|---------------|-------------------------------------|--|---|-----------|
| <b>YP340X</b> |   | <b>RCX240</b> |                                     |  |   | <b>BB</b> |
| Model         | Cable length                              | Controller    | Usable for CE                       | Expansion I/O <sup>Note 1</sup>  | Network option  | Battery   |
|               | 3L: 3.5m (Standard)<br>5L: 5m<br>10L: 10m |               | No entry: Standard<br>E: CE marking | N, P: Standard I/O 16/8<br>N1, P1: 40/24<br>N2, P2: 64/40<br>N3, P3: 88/56<br>N4, P4: 112/72 | No entry: None<br>CC: CC-Link<br>DN: DeviceNet<br>PB: Profibus<br>EN: Ethernet<br>YC: YC-Link <sup>Note 2</sup> | BB: 4 pcs |

Note 1. Use N to N4 when NPN is selected on the I/O board, and P to P4 when PNP is selected.  
Note 2. Available only for the master.



## Specifications

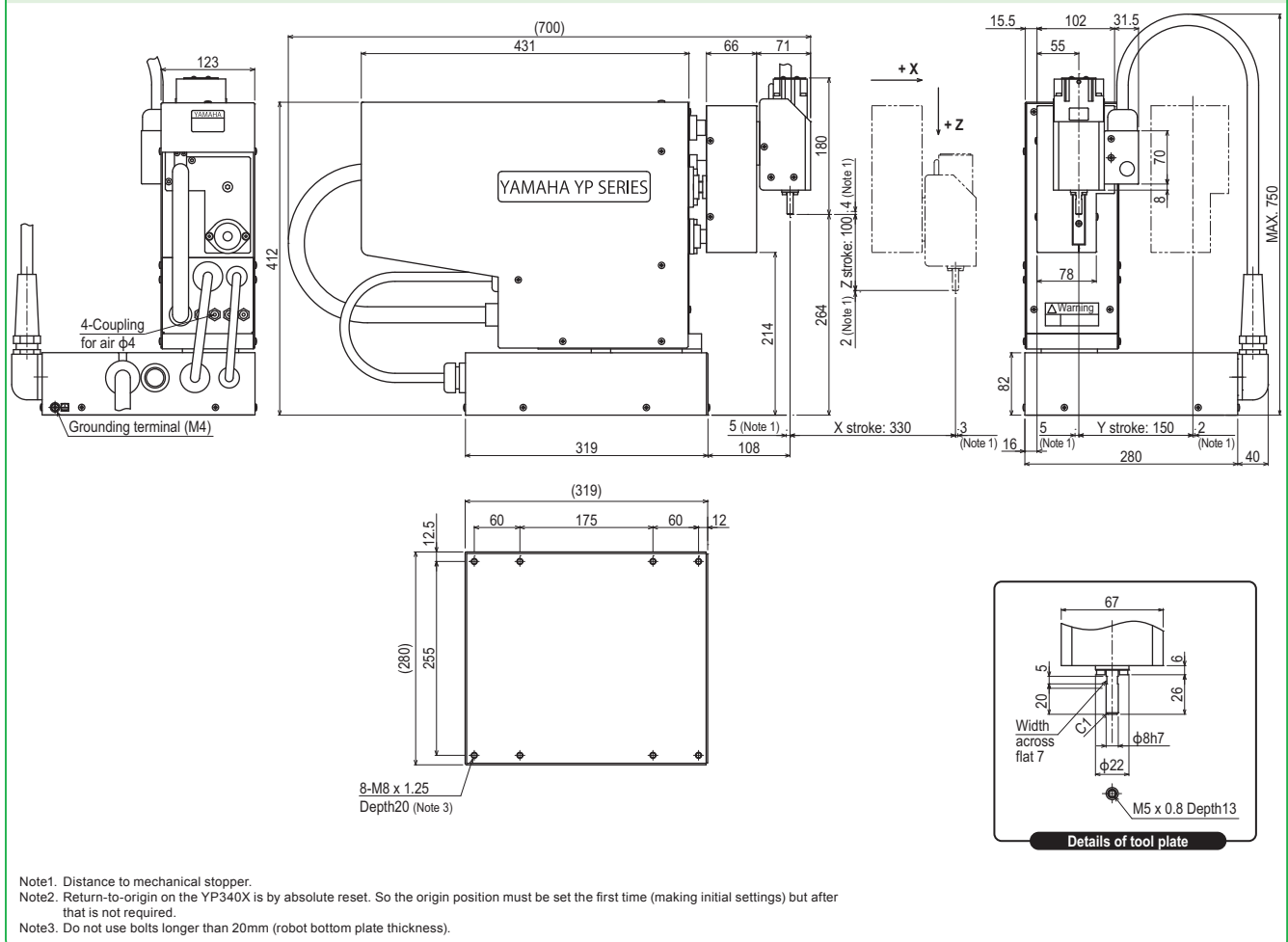
|  | X axis  | Y axis                | Z axis                | R axis       |
|--|---|-----------------------|-----------------------|--------------|
| AC servo motor output (W)  | 200   | 200                   | 200                   | 60           |
| Repeatability <sup>Note 1</sup> (XYZ mm)(R °)                            | +/-0.02   | +/-0.02               | +/-0.05               | +/-0.1       |
| Drive system   | Ball screw (C7 class)                           | Ball screw (C7 class) | Timing belt           | Ball Reducer |
| Deceleration ratio (mm)  | Equivalent to lead 20                           | Equivalent to lead 20 | Equivalent to lead 25 | 1/18         |
| Maximum speed <sup>Note 2</sup> (XYZ mm/sec) (R °/sec)                   | 1500  | 1000                  | 1500                  | 1000         |
| Moving range (XYZ mm) (R °)  | 330   | 150                   | 100                   | +/-180       |
| Cycle time (sec)   | 0.67 <sup>Note 3</sup> , 0.87 <sup>Note 4</sup> |                       |                       |              |
| Maximum payload (kg)   | 1   |                       |                       |              |
| R-axis allowable moment inertia (kgm <sup>2</sup> [kgfcm <sup>2</sup> ]) | 0.0098 [0.01]                                   |                       |                       |              |
| Robot cable length (m)   | Standard: 3.5 Option: 5,10                      |                       |                       |              |
| Weight (kg)  | 34  |                       |                       |              |

Note 1. Positioning repeatability precision in a single swing when residual vibration is stabilized (variable depending on the load and stroke).  
Note 2. When the moving stroke is short, the maximum speed may not be reached.  
Note 3. Reciprocating time in vertical direction (50mm) and longitudinal direction (150mm) with the arch amount of 50 (when executing rough positioning arch motion with 1kg load).  
Note 4. Reciprocating time in vertical direction (25mm) and longitudinal direction (300mm) with the arch amount of 25 (when executing rough positioning arch motion with 1kg load).

## Controller

| Controller | Power consumption (VA) | Operating method  |
|------------|------------------------|---|
| RCX240     | 800                    | Programming /<br>I/O point trace /<br>Remote command /<br>Operation using<br>RS-232C<br>communication |

## YP340X



Note1. Distance to mechanical stopper.  
Note2. Return-to-origin on the YP340X is by absolute reset. So the origin position must be set the first time (making initial settings) but after that is not required.  
Note3. Do not use bolts longer than 20mm (robot bottom plate thickness).

APPLICATION  
Compact  
single-axis robots  
TRANSERO

FLIP-X  
Single-axis robots

PHASER  
Linear motor  
robots

XY-X  
Cartesian  
robots

YK-XG  
SCARA  
robots

YP-X  
Pick & place  
robots

CLEAN  
CONTROLLER INFORMATION

2-axes  
3-axes  
4-axes