

APPLICATION
TRANSEURO
Compact
single-axis robots

FLIP-X
Single-axis robots

PHASER
Linear motor
single-axis robots

XY-X
Cartesian
robots

YK-XG
SCARA
robots

YP-X
Pick & place
robots

YK800XC

● Arm length 800mm ● Maximum payload 20kg



Ordering method

YK800XC			RCX240		R			BB
Model	Z axis stroke	Cable length	Controller	Usable for CE	Regenerative unit	Expansion I/O <small>Note 1</small>	Network option	Battery
	200: 200mm 400: 400mm	3L: 3.5m (Standard) 5L: 5m 10L: 10m		No entry: Standard E: CE marking	R: RGU-2	N, P: Standard I/O 16/8 N1, P1: 40/24 N2, P2: 64/40 N3, P3: 88/56 N4, P4: 112/72	No entry: None CC: CC-Link DN: DeviceNet PB: Profibus EN: Ethernet YC: YC-Link <small>Note 2</small>	BB: 4 pcs

Note 1. Use N to N4 when NPN is selected on the I/O board, and P to P4 when PNP is selected.
Note 2. Available only for the master.

Basic specifications

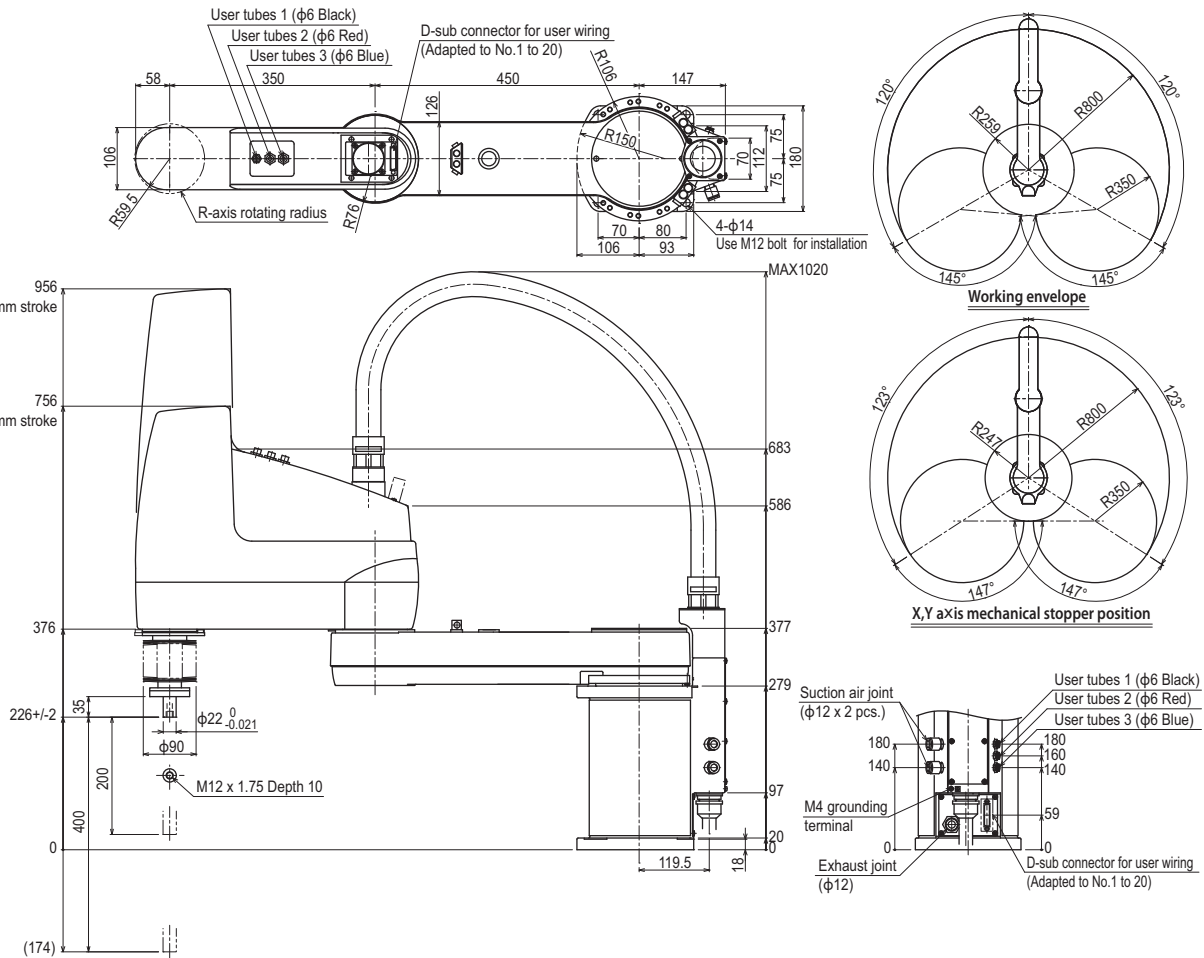
Axis specifications	Arm length (mm)	X axis	Y axis	Z axis		R axis
		Rotation angle ()				
		450	350	200	400	-
		+/-120	+/-145	-	-	+/-360
AC servo motor output (W)		800	400	400	200	
Repeatability <small>Note 1</small> (XYZ mm) (R)		+/-0.02		+/-0.01	+/-0.005	
Maximum speed (XYZ m/sec) (R /sec)		7.3		1.7	600	
Maximum payload (kg)				20		
Standard cycle time with 2kg payload (sec)				0.57		
R-axis tolerable moment of inertia <small>Note 2</small> (kgm ²)				0.32		
User wiring (sq x wires)				0.2 x 20		
User tubing (Outer diameter)				φ6 x 3		
Travel limit		1.Soft limit, 2.Mechanical stopper (X, Y, Z axes)				
Robot cable length (m)		Standard: 3.5 Option: 5, 10				
Weight (kg)				58		
Degree of cleanliness				CLASS 10 <small>Note 3</small>		
Intake air (Nl/min)				60 <small>Note 4</small>		

Note 1. This is the value at a constant ambient temperature. (X,Y axes)
Note 2. There are limits to the setting of the acceleration coefficient.
Note 3. Per 1cf (0.1μm base), when suction blower is used.
Note 4. The necessary intake amount varies depending on the use conditions and environment.

Controller

Controller	Power capacity (VA)	Operation method
RCX240-R	2000	Programming / I/O point trace / Remote command / Operation using RS-232C communication

YK800XC



346

Controller
RCX240 ▶ 402