

C4L

● Origin at non-motor side



Ordering method

C4L							ERCD	
Model	Lead designation 12: 12mm 6: 6mm 2: 2mm	Brake No entry: With no brake BK: With brake	Direction of air coupler installation L: Left (Standard) R: Right	Origin position change None: Standard Z: Non-motor side	Stroke 50 to 400 (50mm pitch)	Cable length ^{Note 1} 3L: 3.5m 5L: 5m 10L: 10m 3K/5K/10K (Flexible cable)	Controller	I/O connector specification CN1: I/O flat cable 1m (Standard) CN2: Twisted-pair cable 2m (pulse train function)

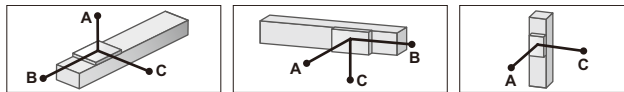
Note 1. The robot cable is standard cable (3L/5L/10L), but can be changed to flexible cable.

Basic specifications

AC servo motor output (W)	30		
Repeatability ^{Note 1} (mm)	±0.02		
Deceleration mechanism	Ball screw $\phi 8$ (Class C10)		
Ball screw lead (mm)	12	6	2
Maximum speed (mm/sec)	720	360	120
Maximum payload (kg)	Horizontal	4.5	6
	Vertical	1.2	2.4
Rated thrust (N)	32	64	153
Stroke (mm)	50 to 400 (50mm pitch)		
Overall length (mm)	Horizontal	Stroke+205	
	Vertical	Stroke+240	
Maximum outside dimension of body cross-section (mm)	W45×H53		
Cable length (m)	Standard: 3.5 / Option: 5, 10		
Degree of cleanliness	CLASS 3 ^{Note 2}		
Intake air (Nl/min) ^{Note 3}	50	30	15

Note 1. Positioning repeatability in one direction.
 Note 2. Per 1cf (0.1 μ m base), when suction blower is used.
 Note 3. The necessary intake amount varies depending on the use conditions and environment.

Allowable overhang ^{Note}

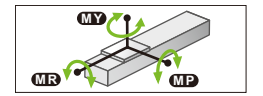


	Horizontal installation (Unit: mm)			Wall installation (Unit: mm)			Vertical installation (Unit: mm)					
	A	B	C	A	B	C	A	C				
Lead 12	2kg	429	87	179	2kg	145	52	368	Lead 12	1.2kg	121	122
4.5kg	219	32	74	4.5kg	46	0	139	Lead 6	2.4kg	52	54	
Lead 6	3kg	511	58	135	3kg	103	22	370	Lead 6	3kg	37	39
6kg	336	26	62	6kg	27	0	185	Lead 2	7.2kg	0	0	
Lead 2	3kg	1571	58	142	3kg	109	23	1150				
6kg	751	27	66	6kg	27	0	420					

Note. Distance from center of slider top to center of gravity of object being carried at a guide service life of 10,000 km.

Note. Service life is calculated for 300mm stroke models.

Static loading moment

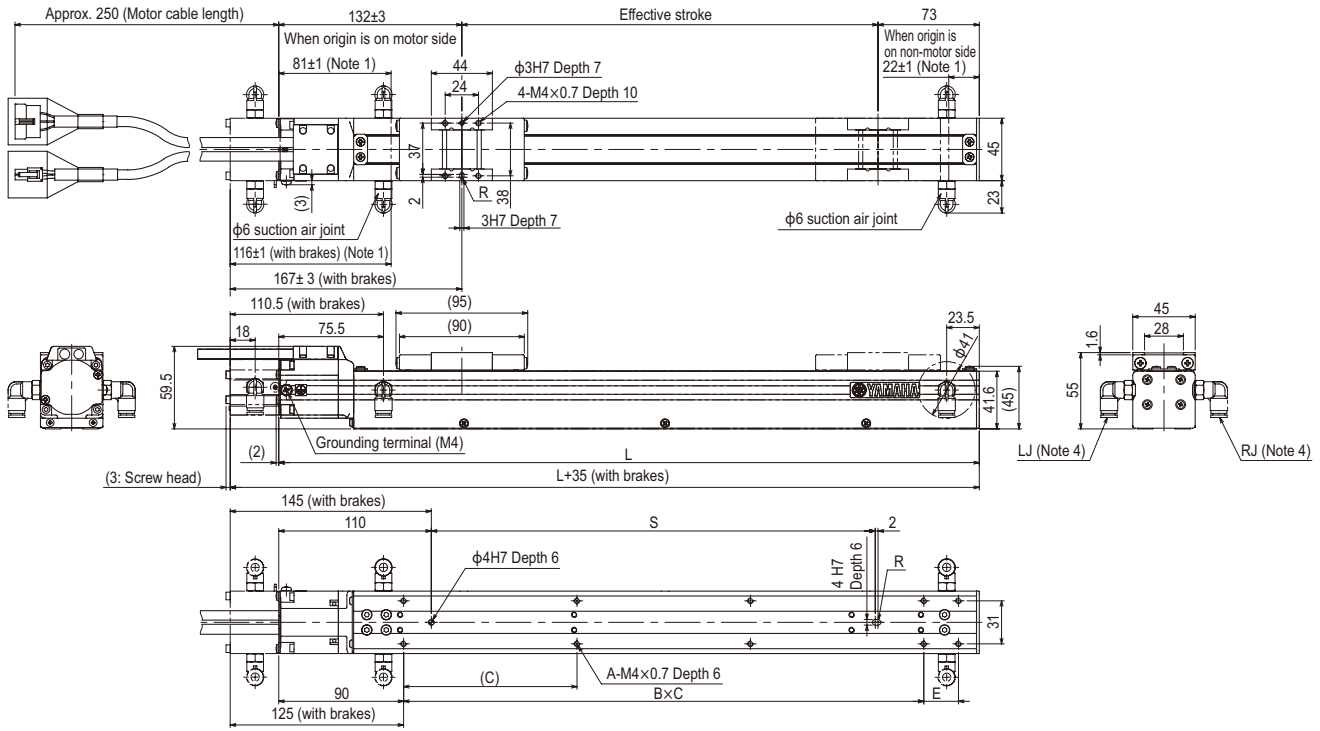


(Unit: N·m)		
MY	MP	MR
15	19	18

Controller

Controller	Operation method
ERCD	Pulse train control / Programming / I/O point trace / Remote command / Operation using RS-232C communication

C4L



Effective stroke	50	100	150	200	250	300	350	400
L	255	305	355	405	455	505	555	605
A	4	6	6	8	8	10	10	10
B	1	2	2	2	2	3	3	4
C	150	100	125	125	125	125	125	125
E	0	0	0	50	100	25	75	0
S	70	120	170	220	270	320	370	420
Weight (kg) ^{Note 3}	1.4	1.5	1.7	1.8	2	2.1	2.3	2.4
Maximum speed for each stroke (mm/sec)	Lead 12	720						
	Lead 6	360						
	Lead 2	120						

Note1. Distance from both ends to the mechanical stopper.

Note2. Minimum bend radius of motor cable is R30.

Note3. Weight of models with no brake. The weight of brake-attached models is 0.2 kg heavier than the models with no brake shown in the table.

Note4. Either right or left can be selected for the installation direction for the $\phi 6$ intake air joint. (The left side is the standard.)

Note5. External view of C4LH is identical to C4L.