

MUD / MUS series



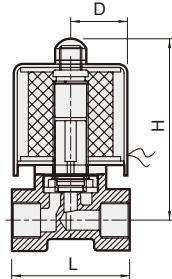
2/2 WAY N.C., N.O. PLUNGER TYPE SOLENOID VALVE

mindman

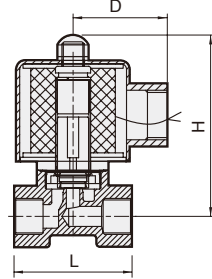
2 way normally closed / normally open solenoid valve.
Available fluid: Water, air, steam, light oil, gas & vacuum.



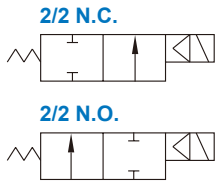
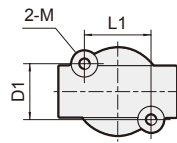
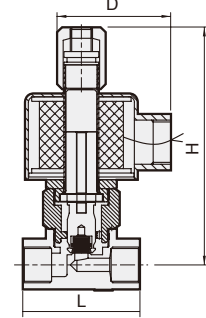
MUD/MUS-6,8



MUD-10,15/MUS-10



MUD-NO



Specification

- Direct acting, conductive and normal close / normal open.
- Able to be operated under no pressure.
- MUD: Acceptable for customization: Viton(130°C), Silicon(130°C), EPDM(130°C) for seal plug.
- AC (DC) voltage tolerance: ±10% (±1%)

Material

Parts name	MUD	MUS
Body	Brass	
Coil	Special copper wire (H class)	
Tube	Stainless steel	
Spring	Stainless steel	
Core	Stainless steel	
Plug	NBR	PTFE (Teflon)
O-ring	NBR	PTFE (Teflon)

Caution

- Before pipelining, the pipe line must be very clean without any contaminants or impurity.
- To extend the lifetime, Y-line filter should be installed in the front end of solenoid valve.
- It should be installed horizontally; vertical installation is not advisable.

Not for fluid of

- Liquid when heat, solid when cool.
- Corrosive fluid.
- MUD: Viscosity over 20 cst.
- MUS: Viscosity over 50 cst.

Order example

MUD - 6 H - NO - □ - G - AC110 - G

MODEL
MUD
MUS

PORT SIZE
6: 1/8"
8: 1/4"
10: 3/8"
15: 1/2"

Blank: Normally closed
NO: Normally open

OPERATING PRESSURE
Blank: Standard
H: High pressure

COIL
Blank: Standard coil
D: Waterproof DIN (under 130°C) (*1)

FLUID	
W	Water, air
G	Gas
LO	Light oil (*2)
VA	Vacuum
T	Steam

(Only for MUD)
(Only for MUS)

VOLTAGE
AC220V(50/60)Hz
AC110V(50/60)Hz
DC24V

PORT THREAD
Blank: Rc thread
G: G thread
NPT: NPT thread

*1. Please order according to the specification sheet.
*2. Note, if diesel fuel or gasoline.

Model	DIN	Port size	CV	Orifice (mm)	Fluid temp. °C	Operating pressure range (MPa)					Vacuum	Dimensions (mm)						Weight (kg)
						Water	Air	Steam	Light oil	Gas		L	H	D	L1	D1	M	
MUD-6	•	Rc1/8"	0.23	2.5	-5~+80	0~0.7	0~0.7	—	0~0.7	0~0.7	0~10 ⁻³ Torr	41	66	21.5	23	19.3	M4×0.7	0.32
MUD-8	•	Rc1/4"	0.23	2.5	-5~+80	0~0.7	0~0.7	—	0~0.7	0~0.7	0~10 ⁻³ Torr	41	66	21.5	23	19.3	M4×0.7	0.31
MUD-8	•	Rc1/4"	0.58	4.0	-5~+80	0~0.3	0~0.3	—	0~0.3	0~0.3	0~10 ⁻³ Torr	41	66	21.5	23	19.3	M4×0.7	0.31
MUD-8		Rc1/4"	0.79	6.0	-5~+80	0~0.1	0~0.1	—	0~0.1	0~0.1	0~10 ⁻³ Torr	41	66	21.5	23	19.3	M4×0.7	0.31
MUD-8H		Rc1/4"	0.18	1.2	-5~+130	0~2	0~2	—	0~2	0~2	0~10 ⁻³ Torr	41	66	21.5	23	19.3	M4×0.7	0.31
MUD-10	•	Rc3/8"	0.58	4.0	-5~+80	0~1	0~1	—	0~1	0~1	0~10 ⁻³ Torr	53	75	48	20	21.0	M5×0.8	0.53
MUD-10		Rc3/8"	0.79	8.0	-5~+80	0~0.3	0~0.5	—	0~0.3	0~0.5	0~10 ⁻³ Torr	53	90	48	20	21.0	M5×0.8	0.65
MUD-10H	•	Rc3/8"	0.45	2.0	-5~+130	0~2	0~2	—	0~2	0~2	0~10 ⁻³ Torr	53	75	48	20	21.0	M5×0.8	0.54
MUD-15		Rc1/2"	0.58	8.0	-5~+80	0~0.3	0~0.5	—	0~0.3	0~0.5	0~10 ⁻³ Torr	53	90	48	20	21	M5×0.8	0.64
MUS-6	•	Rc1/8"	0.23	2.5	-5~+185	—	—	0~0.7	—	—	—	41	66	21.5	—	—	—	0.32
MUS-8	•	Rc1/4"	0.23	2.5	-5~+185	—	—	0~0.7	—	—	—	41	66	21.5	23	19.3	M4×0.7	0.32
MUS-10	•	Rc3/8"	0.23	4.0	-5~+185	—	—	0~1	—	—	—	53	75	48	20	21.0	M5×0.8	0.54
MUD-6-NO		Rc1/8"	0.23	2.5	-5~+80	0~0.7	0~0.7	—	0~0.7	—	0~10 ⁻³ Torr	41	87	21.5	23	19.3	M4×0.7	0.44
MUD-8-NO		Rc1/4"	0.23	2.5	-5~+80	0~0.7	0~0.7	—	0~0.7	—	0~10 ⁻³ Torr	41	87	21.5	23	19.3	M4×0.7	0.43
MUD-8-NO		Rc1/4"	0.58	4.0	-5~+80	0~0.3	0~0.3	—	0~0.3	—	0~10 ⁻³ Torr	41	87	21.5	23	19.3	M4×0.7	0.43
MUD-8-NO		Rc1/4"	0.79	6.0	-5~+80	0~0.1	0~0.1	—	0~0.1	—	0~10 ⁻³ Torr	41	87	21.5	23	19.3	M4×0.7	0.43
MUD-8H-NO		Rc1/4"	0.18	1.2	-5~+130	0~2	0~2	—	0~2	—	0~10 ⁻³ Torr	41	87	21.5	23	19.3	M4×0.7	0.43
MUD-10-NO	•	Rc3/8"	0.58	4.0	-5~+80	0~1	0~1	—	0~1	—	0~10 ⁻³ Torr	53	105	48	20	21.0	M5×0.8	0.7

* The pressure ratings indicated above are based on AC110V/220V. The maximum pressure may vary in case on DC/AC24V.

* MUD-6,8-NO: Voltage at DC24V, H: 79.5mm.