



Specification

Model	MVFA-230	MVFA-231	MVFA-240
Bore No.	8A		
Port size	Rc1/4		
No. of port	3	4	
No. of position	2		
Medium	Air		
Operating pressure range	0.2~0.7 MPa		
Proof pressure	1 MPa		
Effective orifice	8 mm ²		
Ambient temperature	-5~+60°C (No freezing)		
Weight (with protection)	684 (1426) g	739 (1481) g	774 (1516) g

Order example

MVFA — 230 — 8A — PL — G

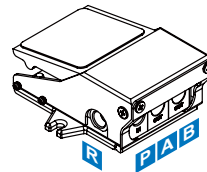
MODEL

230: 3/2 NC
231: 3/2 NO
240: 4/2

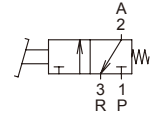
8A: Rc1/4

P: With protection
L: With lock

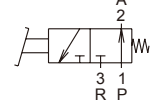
PORT THREAD
Blank: Rc thread
G: G thread
NPT: NPT thread



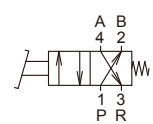
MVFA-230
N.C.



MVFA-231
N.O.



MVFA-240

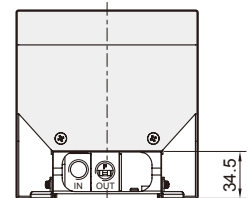
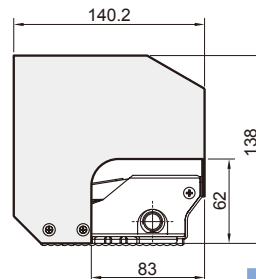
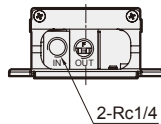
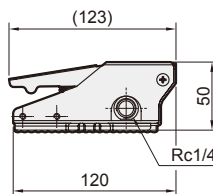
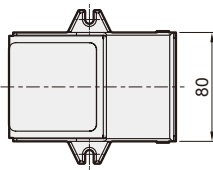


MVFA-230-8A-(L)

MVFA-231-8A-(L)

MVFA-230-8A-P(L)

MVFA-231-8A-P(L)



MVFA-240-8A-(L)

MVFA-240-8A-P(L)

