

# MSR\* / MEF300 series

PLASTIC SILENCER / EXHAUST CLEANER



## Order example

**MSR01W — S**

MODEL

01: R1/8  
02: R1/4  
03: R3/8

Blank: Black  
W: White

S: S type  
B: B type



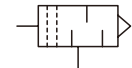
## Order example

**MEF300 — 03**

MODEL

03: Rc3/8

## Symbol

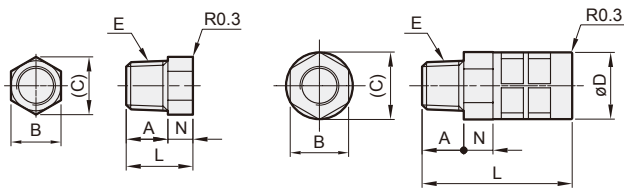


## Specification

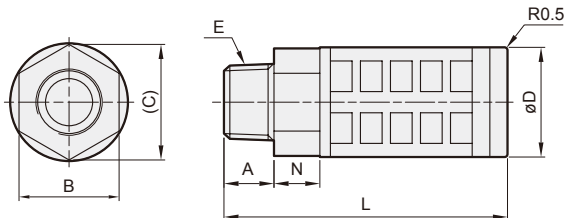
Model	MSR*
Medium	Air
Operating pressure range	0~0.9 MPa
Ambient temperature	0~+60°C

**MSR01-S**

**MSR02-S**



**MSR\*-B**



## MSR\*-\*

Model	Code Port size	A	B	C	D	E	L	N
<b>MSR01-S</b>	R1/8	10	10	11.5	—	R1/8	16	6
<b>MSR01-B</b>	R1/8	7	14	16.2	16	R1/8	33	7
<b>MSR02-S</b>	R1/4	10	14	16.2	16	R1/4	36	7
<b>MSR02-B</b>	R1/4	10	17	19.6	20.3	R1/4	63	8.5
<b>MSR03-B</b>	R3/8	12	24	26.2	26.3	R3/8	67.5	11

## Specification

Model	MEF300
Port size	Rc3/8
Medium	Air
Operating pressure range	0~0.9 MPa
Filter element	6 μm
Ambient temperature	0~+60°C

## Features

- The MEF300 can remove oil mist and dust in exhaust air for keeping environment clean.

