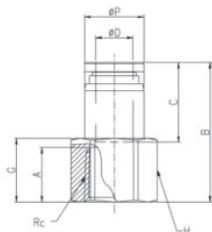
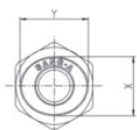


Metric Size **R (PT)** Thread Type

GPCF Female Straight



MODEL [ØD-T] Tube (Metric) – Thread (R)

MODEL	ØD	Rc	ØP	G	A	B	C	H	X	Y	Orifice (Ømm)	W.G(g)	Qty/Inbox
GPCF 03M3	3	M3	8.8	5	3.5	18	14.5	9	8.6	10.8	2.5	6.4	100
GPCF 03M5	3	M5	8.8	5	5	20.5	14.5	9	8.6	10.8	2.5	7.3	100
GPCF 04M3	4	M3	8.8	5	3.5	18	14.5	9	8.6	10.8	2.5	7.3	100
GPCF 04M5	4	M5	8.8	5	5	20.5	14.5	9	8.6	10.8	3.2	7.0	100
GPCF 0401	4	Rc1/8	8.8	11	9	24.4	14.5	13	8.6	10.8	3.2	13.5	100
GPCF 0402	4	Rc1/4	8.8	14	12	27.4	14.5	17	8.6	10.8	3.2	24.9	100
GPCF 0403	4	Rc3/8	8.8	15	13	28.4	14.5	19	8.6	10.8	3.2	26.3	50
GPCF 0601	6	Rc1/8	11	11	9	25.4	15.5	13	11	13	5	14.8	100
GPCF 0602	6	Rc1/4	11	14	12	28.4	15.5	17	11	13	5	26.1	50
GPCF 0603	6	Rc3/8	11	15	13	29.4	15.5	19	11	13	5	27.6	50
GPCF 0801	8	Rc1/8	13	10	9	27.7	17.8	13	13	15	7	16.4	50
GPCF 0802	8	Rc1/4	13	14	12	30.7	17.8	17	13	15	7	27.7	50
GPCF 0803	8	Rc3/8	13	15	13	31.7	17.8	19	13	15	7	29.2	50
GPCF 0804	8	Rc1/2	13	18	16	34.7	17.8	24	13	15	7	50.5	25
GPCF 1001	10	Rc1/8	15.5	10	9	29.4	19.4	17	16	18.5	7	29.9	50
GPCF 1002	10	Rc1/4	15.5	13	12	32.4	19.4	17	16	18.5	9	30.3	50
GPCF 1003	10	Rc3/8	15.5	15	13	33.4	19.4	19	16	18.5	9	32.5	25
GPCF 1004	10	Rc1/2	15.5	18	16	36.4	19.4	24	16	18.5	9	53.6	25
GPCF 1202	12	Rc1/8	18.8	12	12	35.4	22.4	19	19.5	22.5	10	45.3	25
GPCF 1203	12	Rc1/4	18.8	15	13	36.4	22.4	19	19.5	22.5	10	39.4	25
GPCF 1204	12	Rc3/8	18.8	18	16	39.4	22.4	24	19.5	22.5	10	60.6	25