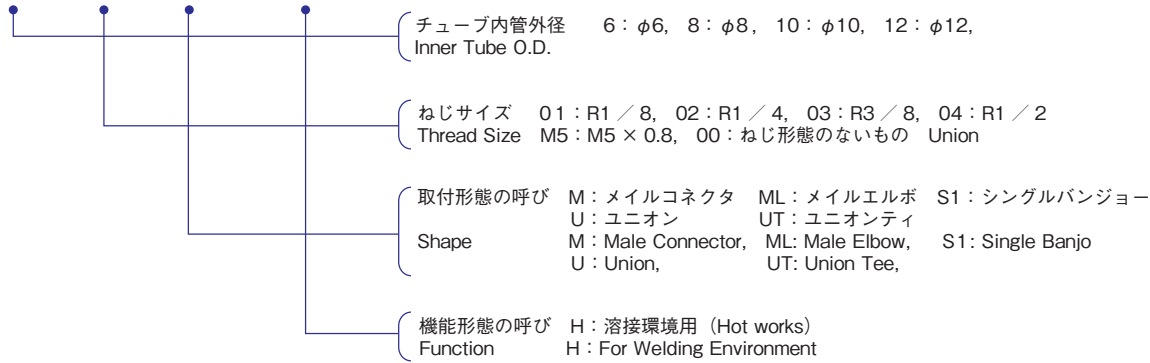


# タッチコネクター FUJI H タイプ

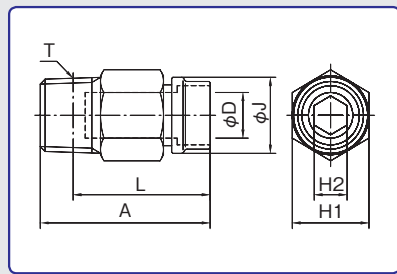
## TOUCH CONNECTOR FUJI H TYPE

型式表示例 / How To Order

### 6 - 01 ML - H



### メールコネクター MALE CONNECTOR

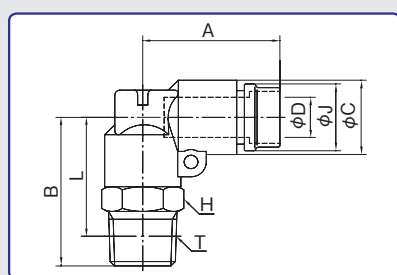


| 型式<br>Model | A    | 適用<br>チューブ外径<br>Tube O.D.<br>φD | 二面幅<br>Spanne Flats |     | φJ   | L    | チューブ<br>挿入寸法<br>Tube Insertion<br>Depth | 剥離寸法 | ねじサイズ<br>Thread<br>T | 重量<br>Weight<br>(g) |
|-------------|------|---------------------------------|---------------------|-----|------|------|---|------|----------------------|---------------------|
|             |      |                                 | H1                  | H2  |      |      |   |      |                      |                     |
| 6-M5M-H     | 27.1 | 6.0                             | 12.0                | φ2  | 11.5 | 23.6 | 22.1                                    | 16.1 | M5×0.8               | 10.5                |
| 6-01M-H     | 27.0 | 6.0                             | 12.0                | 4.0 | 11.5 | 23.0 | 22.1                                    | 16.1 | R1/8                 | 11.0                |
| 6-02M-H     | 25.5 | 6.0                             | 14.0                | 4.0 | 11.5 | 19.5 | 22.1                                    | 16.1 | R1/4                 | 15.5                |
| 6-03M-H     | 26.5 | 6.0                             | 17.0                | 4.0 | 11.5 | 20.1 | 22.1                                    | 16.1 | R3/8                 | 28.0                |
| 8-01M-H     | 32.5 | 8.0                             | 14.0                | 5.0 | 13.5 | 28.5 | 22.8                                    | 16.8 | R1/8                 | 18.0                |
| 8-02M-H     | 31.0 | 8.0                             | 14.0                | 6.0 | 13.5 | 25.0 | 22.8                                    | 16.8 | R1/4                 | 19.0                |
| 8-03M-H     | 26.5 | 8.0                             | 17.0                | 6.0 | 13.5 | 20.1 | 22.8                                    | 16.8 | R3/8                 | 25.0                |
| 10-01M-H    | 34.6 | 10.0                            | 17.0                | 5.0 | 16.5 | 30.6 | 24.6                                    | 17.6 | R1/8                 | 26.0                |
| 10-02M-H    | 35.9 | 10.0                            | 17.0                | 6.0 | 16.5 | 29.9 | 24.6                                    | 17.6 | R1/4                 | 30.5                |
| 10-03M-H    | 33.9 | 10.0                            | 17.0                | 8.0 | 16.5 | 27.5 | 24.6                                    | 17.6 | R3/8                 | 31.5                |
| 10-04M-H    | 30.9 | 10.0                            | 21.0                | 8.0 | 16.5 | 22.9 | 24.6                                    | 17.6 | R1/2                 | 45.5                |
| 12-02M-H    | 38.9 | 12.0                            | 19.0                | 7.0 | 18.5 | 32.9 | 26.2                                    | 19.2 | R1/4                 | 37.7                |
| 12-03M-H    | 34.9 | 12.0                            | 19.0                | 9.0 | 18.5 | 28.5 | 26.2                                    | 19.2 | R3/8                 | 33.2                |
| 12-04M-H    | 32.9 | 12.0                            | 21.0                | 9.0 | 18.5 | 24.9 | 26.2                                    | 19.2 | R1/2                 | 44.7                |

※6-M5M-Hは六角穴ではございません。

### メールエルボ MALE ELBOW

※工業用水使用不可  
※ Please Do Not Use For Industrial Water



| 型式<br>Model | A    | B    | φC   | 適用<br>チューブ外径<br>Tube O.D.<br>φD | 二面幅<br>Spanner<br>Flats<br>H | φJ   | L    | チューブ<br>挿入寸法<br>Tube Insertion<br>Depth | 剥離寸法 | ねじサイズ<br>Thread<br>T | 重量<br>Weight<br>(g) |
|-------------|------|------|------|---------------------------------|------------------------------|------|------|---|------|----------------------|---------------------|
|             |      |      |      |                                 |                              |      |      |   |      |                      |                     |
| 6-01ML-H    | 25.3 | 26.0 | 13.0 | 6.0                             | 12.0                         | 11.5 | 22.0 | 22.1                                    | 16.1 | R1/8                 | 30.5                |
| 6-02ML-H    | 25.3 | 29.0 | 13.0 | 6.0                             | 14.0                         | 11.5 | 23.0 | 22.1                                    | 16.1 | R1/4                 | 33.5                |
| 6-03ML-H    | 25.3 | 30.0 | 13.0 | 6.0                             | 17.0                         | 11.5 | 23.6 | 22.1                                    | 16.1 | R3/8                 | 40.5                |
| 8-01ML-H    | 27.0 | 27.0 | 15.0 | 8.0                             | 14.0                         | 13.5 | 23.0 | 22.8                                    | 16.8 | R1/8                 | 38.5                |
| 8-02ML-H    | 27.0 | 30.0 | 15.0 | 8.0                             | 14.0                         | 13.5 | 24.0 | 22.8                                    | 16.8 | R1/4                 | 42.5                |
| 8-03ML-H    | 27.0 | 31.0 | 15.0 | 8.0                             | 17.0                         | 13.5 | 24.6 | 22.8                                    | 16.8 | R3/8                 | 46.5                |
| 10-01ML-H   | 29.8 | 28.0 | 17.0 | 10.0                            | 17.0                         | 16.5 | 24.0 | 24.6                                    | 17.6 | R1/8                 | 46.0                |
| 10-02ML-H   | 29.8 | 31.0 | 17.0 | 10.0                            | 17.0                         | 16.5 | 25.0 | 24.6                                    | 17.6 | R1/4                 | 49.5                |
| 10-03ML-H   | 29.8 | 32.0 | 17.0 | 10.0                            | 17.0                         | 16.5 | 25.6 | 24.6                                    | 17.6 | R3/8                 | 53.0                |
| 10-04ML-H   | 29.8 | 36.0 | 17.0 | 10.0                            | 21.0                         | 16.5 | 28.0 | 24.6                                    | 17.6 | R1/2                 | 70.0                |
| 12-02ML-H   | 32.4 | 34.5 | 19.0 | 12.0                            | 19.0                         | 18.5 | 28.5 | 26.2                                    | 19.2 | R1/4                 | 65.2                |
| 12-03ML-H   | 32.4 | 35.5 | 19.0 | 12.0                            | 19.0                         | 18.5 | 29.1 | 26.2                                    | 19.2 | R3/8                 | 69.7                |
| 12-04ML-H   | 32.4 | 38.5 | 19.0 | 12.0                            | 21.0                         | 18.5 | 30.5 | 26.2                                    | 19.2 | R1/2                 | 82.2                |

注) エルボ本体は亜鉛ダイカスト製、空気専用 Only compressed air 只压缩空气