

# COMMERCIAL LED LIGHTING



PANERU

## BL SERIES

### LED PANEL LIGHT



Gym Room, Singapore



595mm x 595mm

BL22-36W-86 • 36W

295mm x 1195mm

BL14-36W-86 • 36W

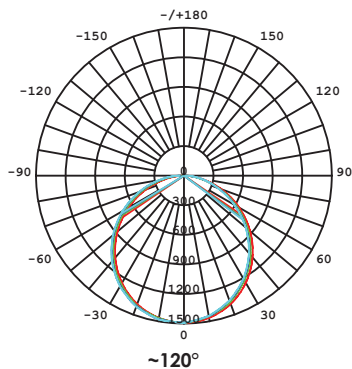
595mm x 1195mm

BL24-60W-86 • 60W

#### PRODUCT FEATURES

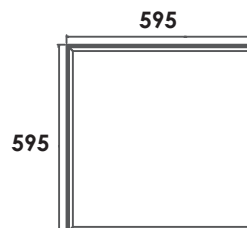
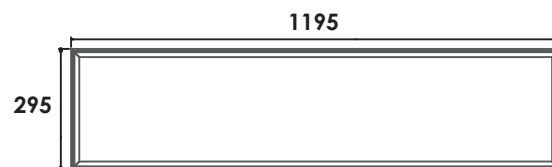
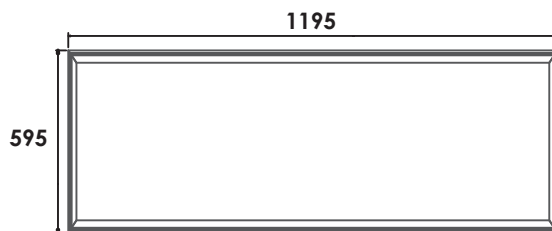
- Back lit high performance LED panel light come with replaceable LED driver & low glare OPAL diffuser.
- Lightweight for easy installation & maintenance.

#### PHOTOMETRY/BEAM ANGLE



#### PRODUCT DIMENSION

- All dimension in mm



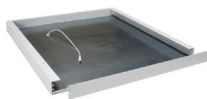
#### OPTIONAL MOUNTING/ACCESSORIES



Recessed Frame  
RF14, RF22, RF24



Suspension kit



Surface Frame  
SF14, SF22, SF24

# TECHNICAL DATA



MODEL NO.	BL14-36W	BL22-36W	BL24-60W
Power Consumption (W)	36	36	60
Luminaire Flux ± 5% (lm)	3,780	3,780	6,300
System Efficiency ± 5% (lm/W)	105	105	105
Power Factor (PF)	≥ 0.95		
Input Current (A)	< 0.16	< 0.16	< 0.26
Driving Current ± 10% (mA)	900	900	1400
Total Harmonic Distortion (THD) %	< 20	< 20	< 20
Operating Temperature (C°)	-30 °C to +50 °C		
Net Weight / Lamp (kg)	2.00	1.60	4.00
Gross Weight / Lamp (kg)	2.50	2.00	4.50
Packaging Info (unit/ctn)	2 pcs lamps / carton	2 pcs lamps / carton	2 pcs lamps / carton
Product Dimension, W x L x H (mm)	295 x 1195 x 41	595 x 595 x 41	595 x 1195 x 41
Carton Dimension, W x L x H (mm)	395 x 1310 x 150	710 x 660 x 225	690 x 1310 x 150
Total Gross Weight (kg)	6.00 (2 pcs lamps)	4.50 (2 pcs lamps)	10.20 (2 pcs lamps)
CBM (m³)	0.078	0.106	0.136

Note: The above specified lumen and system efficiency based on standard CCT: 6000K, CR1: RA>80.

## TECHNICAL SPECIFICATION

### ELECTRICAL SYSTEM

- **Input voltage** : 220 - 240Vac, 50/60Hz, PF > 0.95
- **Insulation Class** : Class II
- **LED Driver** : Non-Dimmable (Flicker free available)  
1-10V Dimmable or DALI (Upon request)

### LIGHT SOURCE / OPTIC

- **LED Type** : SMD 3030 with TM21 and LM80
- **Color Temperature (CCT)** : Standard 6000K (4000K and others upon request)
- **Color Rendering Index (CRI)** : Ra > 80 (Ra > 90 upon request)
- **Life Time Residual Flux** : (L70), >54,000 hours @ Ta: 40°C
- **Optical System** : ~120° with PS diffuser
- **Working Temperature** : -20°C to +50°C

### FIXTURE/HOUSING

- **Ingress Protection (IP)** : IP40
- **Housing Material** : 6063 Aluminium Extrusion
- **Optic Material** : OPAL PS Diffuser (Low glare)



### CERTIFICATION AND COMPLIANCE TEST

- **Type Test Certified (Luminaire)** : IEC 60598-1, IEC 60598-2-2  
IEC 60598-1, IEC 60598-2-1  
EN 62493, IEC 62031  
IEC/TR 62778, IEC 62471
- **LED Driver** : IEC 61347-2-13  
IEC 61347-1
- **EMC Certified** : EN 61000-3-2, EN61000-3-3  
EN 55015, EN 61547
- **LED Compliances Test** : IESNA LM-80, TM-21
- **Energy Commission Certified Product (ST-Malaysia)**
- **SIRIM Product Certification (PCS) Malaysia**



### APPLICATION

- Indoor • Office • Halls • School • Hypermarkets
- Meeting Room • Hospitals • Corridor