

EASY TO CONFIGURE

Easy-to-use configuration tool provides a drop-down menu selection for auto-configuration for the most common types of tap changers.

Once you select the Tap Type, all the other configuration details are automatically populated. If the tap changer is not included in the list, the Advanced Mode provides the ability to configure the sensor for any type of tap changer application.

RELIABLE & RESISTANT TO SURGES

The optical encoder is robust and doesn't need to be disconnected during transformer impulse test and is resistant to failures due to lightning strikes or other system surges.

PRE-ENGINEERED INSTALLATION

Mounting kits are available for the most common types of LTC drives making the installation quick and easy for most applications.

The 3/16" shaft size and adaptor bracket provide an easy replacement solution for traditional tap sensors.

COST EFFECTIVE

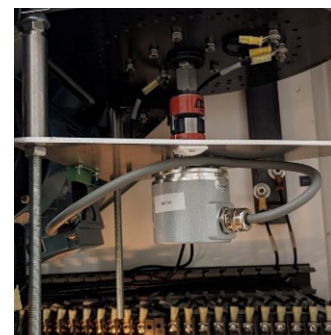
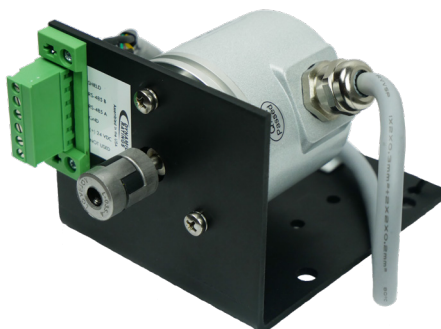
The sensor provides a Modbus out put that can be read directly by a DR-E3 or DR-C50 device, eliminating the cost of a discrete display. An optional display is available which can be provide with the sensor, providing a solution that provides notable savings compared to traditional tap sensor solutions.

The display also provides a configurable output (typically 4-20mA), allowing use with other brands of monitoring devices.

RESPONSIVE

ASSET HEALTH SOLUTIONS

DYNAMIC RATINGS		Display Settings	Encoder Settings	Tap Settings	Output Settings
Tap Configuration					
Tap Type	Reinhausen RMV-II				
Degrees/Tap	9				
Neutrals	1				
Minimum Tap	-16				
Maximum Tap	16				
Tap Direction	CW				
Current Tap	6				
Laps	2030				
Ticks	32465				
Calculate Table		Write Table			
Add Tap Changer		Read Current Values			
Linearization Table					
Point	Ticks/Laps	Tap			
1	1343	-13			
2	2981	-12			
3	4619	-11			
4	6257	-10			
5	7895	-9			
6	9533	-8			
7	11171	-7			
8	12809	-6			
9	14447	-5			
10	16085	-4			
11	17723	-3			
12	19361	-2			
13	20999	-1			
14	22637	0			
15	24275	1			
16	25913	2			
17	27551	3			
18	29189	4			
19	30827	5			



DYNAMIC RATINGS		Display Settings	Encoder Settings	Tap Settings	Output Settings
4-20 mA Output Configuration					
Minimum Output	4.000	mA			
Maximum Output	20.000	mA			
Configure Output					

Sensor Specifications

Power Requirements:	24 VDC or 120 VAC
Temperature Range:	-40°C to 70°C (-40°F to 158°F)
Communications:	Modbus (RS485), 4-20 mA (Loop Powered)

Display Specifications

General Description:	Backlit, 7-segment, dual-line LED display provides a local indication of the tap position of the load tap changer. 8 brightness settings to ensure visibility in any lighting. Remote indication of the tap position via an RS-485 Modbus connection or a 4-20 mA loop powered connection.
Power Requirements:	24 VDC or 120 VAC
Temperature Range:	-40°C to 70°C (-40°F to 158°F)
Communications:	Modbus (RS485), 4-20 mA (Loop Powered)

How To Order

Part #	Description
SEN-0001	Tap Position Sensor with Standard Bracket Mount
SEN-0002	Tap Position Sensor with UZD Kit
SEN-0003	Tap Position Sensor with Flexible Adapter
SEN-0017	Tap Position Sensor with MD-III Kit (Typical Drive for RMV-II)
MOD-0013	Tap Position Display Module (24 VDC)
MOD-0014	Tap Position Display Module (120 VAC)



Local Contact:



PQE
POWER SYSTEM
SDN BHD

+603 7733 6433
info@PQE.com.my
www.PQE.com.my