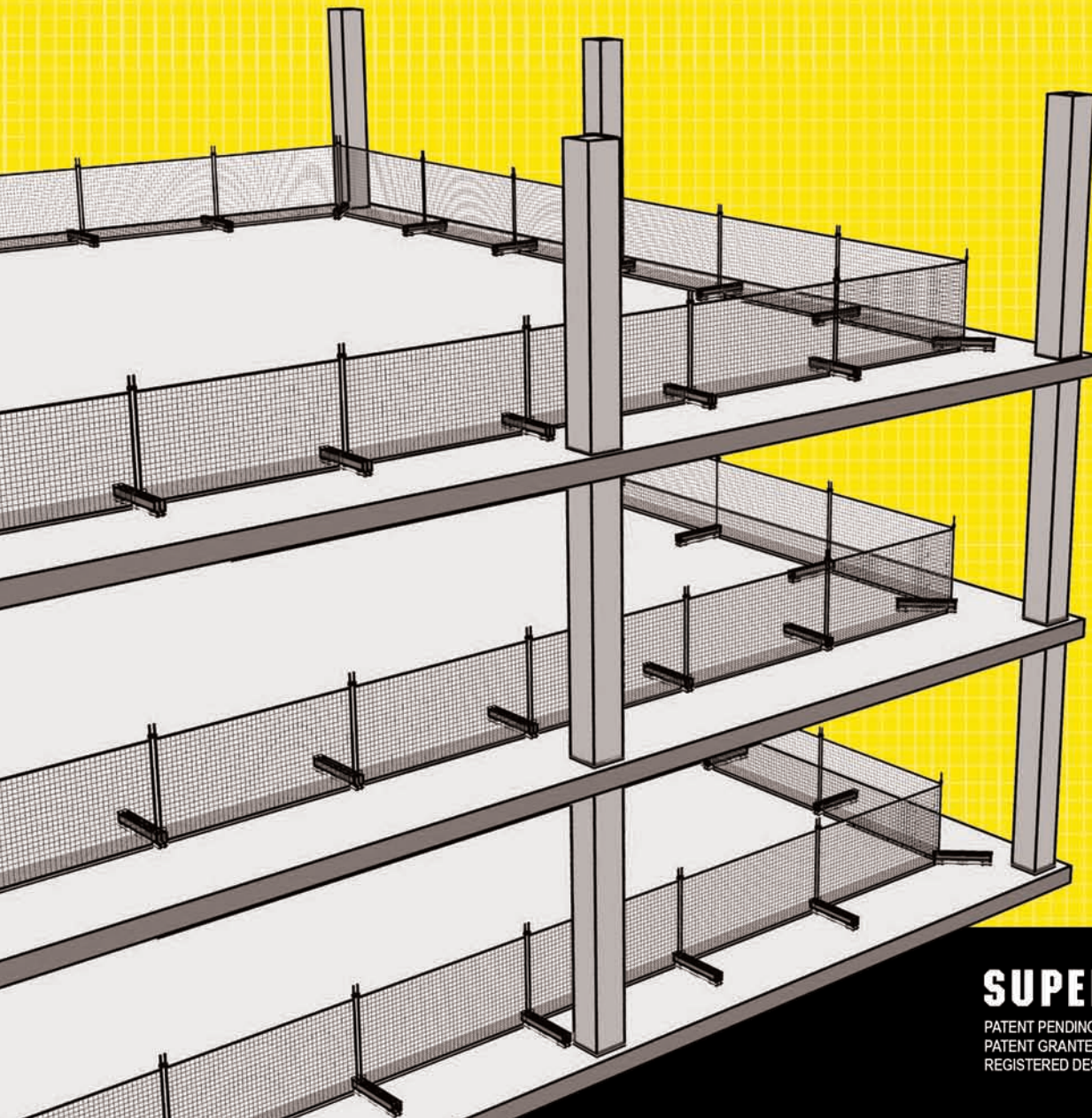


**AT LAST
NO DRILLING
NO BOLTING**

PRESTON™
PERFORMANCE THROUGH INNOVATION

EDGE PROTECTION BARRIER



SUPERBARRIER™

PATENT PENDING WORLDWIDE
PATENT GRANTED AUSTRALIA
REGISTERED DESIGN WORLDWIDE

SUPERBARRIER[™]

PATENT PENDING WORLDWIDE
PATENT GRANTED AUSTRALIA
REGISTERED DESIGN WORLDWIDE

WARATAH

BARRIER TYPE 1, 2 & 3:

1000 mm high safety barrier for use around the perimeter of a building floor during construction of a building to protect workers or objects falling from the building floor to the ground below.

LILLY PILLY

BARRIER TYPE 4:

1100 mm high security barrier for control of pedestrians, crowds and people on any surface.

WATTLE

BARRIER TYPE 5:

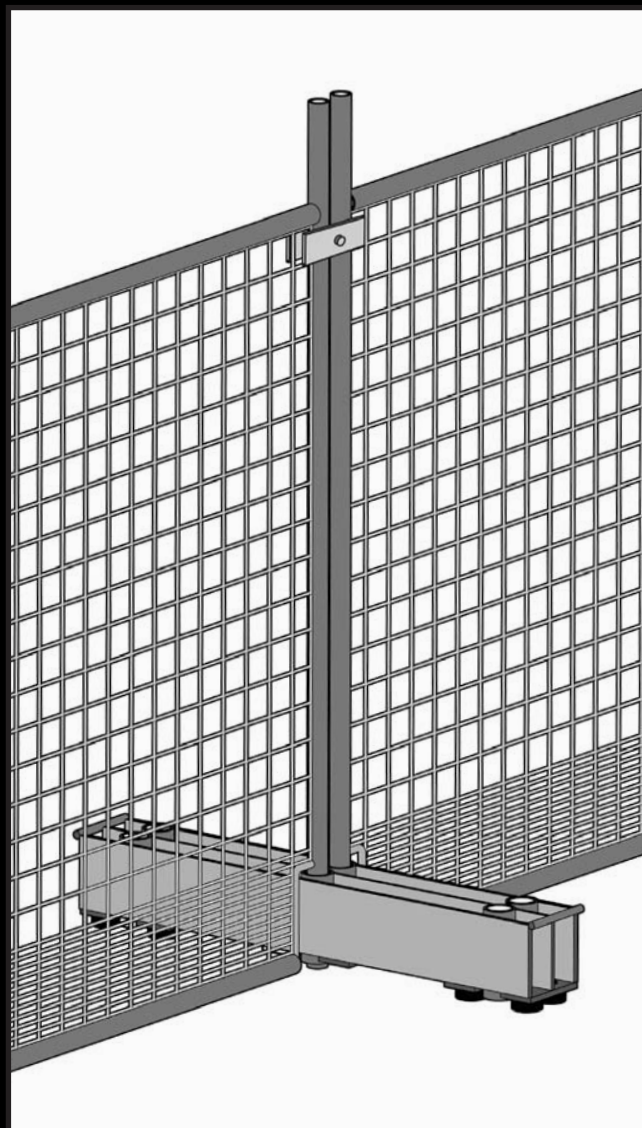
2000 mm high security barrier for various safety and security applications.

BENEFITS:

- No Bolting - No Drilling
- Self-supporting counter weight base
- Superior safety and security
- Very fast and easy to install
- Very fast and easy to relocate in minutes
- 3 basic components, 2.1 m long fence, counter weight and clip.
- All components under 20kg
- Make any combination to suit your safety or security need.

CHECKLIST:

- ✓ Australian and world class
- ✓ Product inventor and manufacturer
- ✓ Patented worldwide
- ✓ 38 years experience
- ✓ Rigorous in-house product testing
- ✓ Only the highest quality material used
- ✓ Stock on hand for quick turn around
- ✓ Customised solutions
- ✓ Competitive prices
- ✓ Complies with Australian and European Standards



Preston Australia Pty Ltd
196 Silverwater Rd
Silverwater NSW 2128
Australia

T: + 61 2 9748 4677

F: + 61 2 9648 3591

mail@prestonaustralia.com

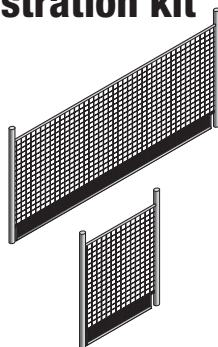
SUPERBARRIER™

Instructions to Assemble Demonstration Kit

1 Components in demonstration kit

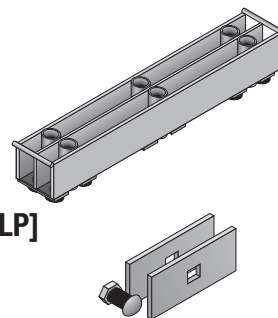
1.1 Barrier 2100mm [B21]
Quantity: 5

1.2 Barrier 800mm [B08]
Quantity: 1



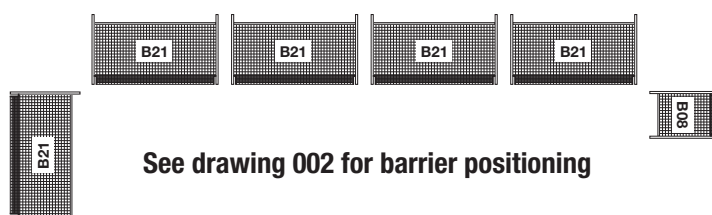
1.3 Rubber Metal Base [RMB]
Quantity: 7

1.4 Clip (with nut and bolt) [CLP]
Quantity: 5



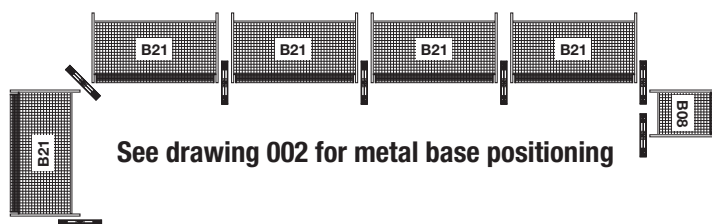
2 Assembly Instruction

2.1 Lay 4 B21 barrier in a straight line, one B21 at 90 degrees at one end and one B08 at 90 degrees at the other end of B21.



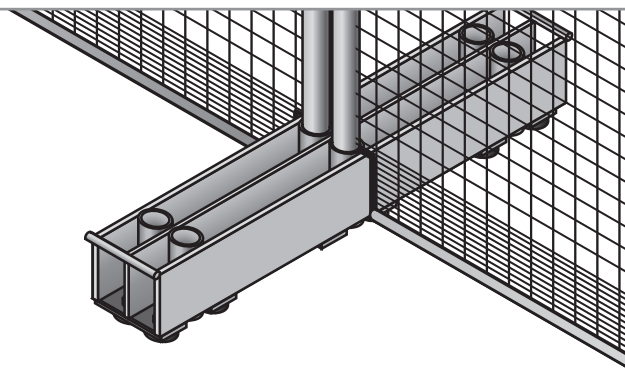
2.2 Place Rubber Metal Bases (RMB) alongside barriers as shown.

PATENT NO. 2008001574, 2008100047,
2008100916, 2007101042.
REG. DESIGNS 119962008, 140832008, 131842008,
131852008, 131862008, 131872008, 131882008.

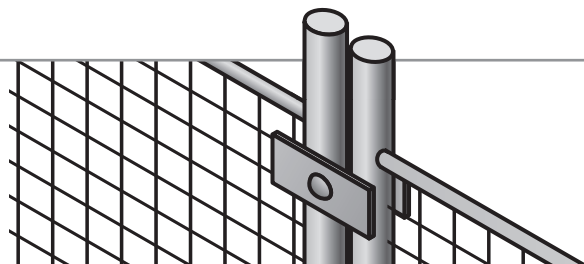


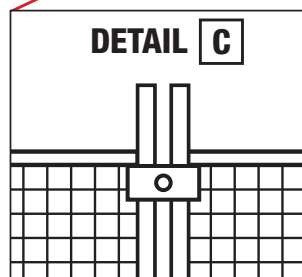
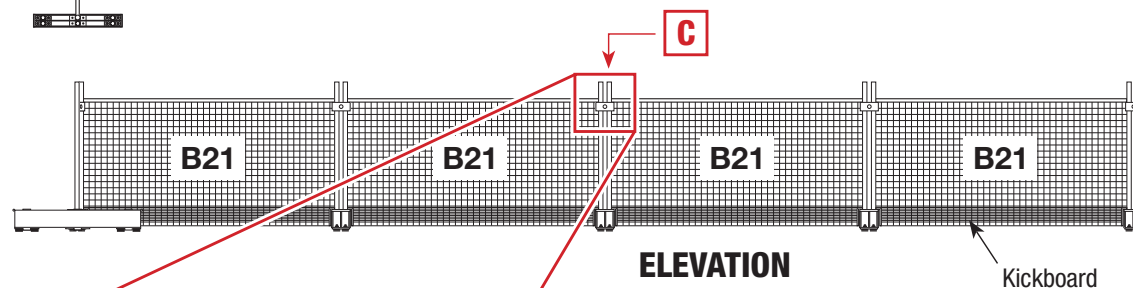
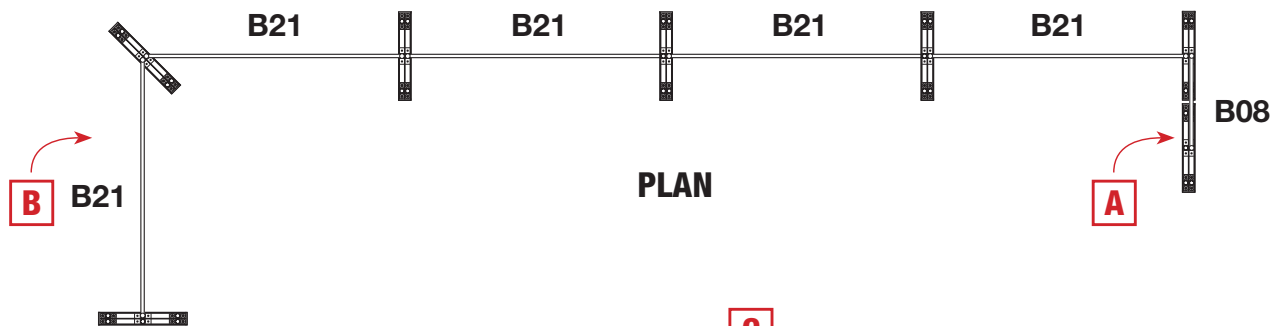
2.3 Stand up B21 barriers and place the posts of the B21 barrier into the middle pipes of each Rubber Metal Base (RMB).

2.4 B21 and B08 barrier at the end to be turned upside down with the kickboard up to show example that all the barriers can be installed either up or down to get extra height or to straddle the Rubber Metal Base (see Drawing 002 Section A and B).



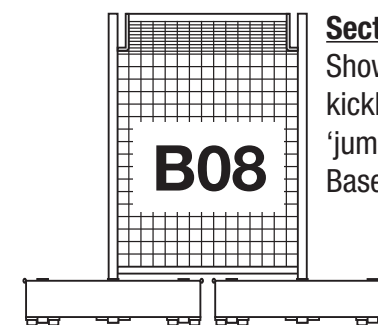
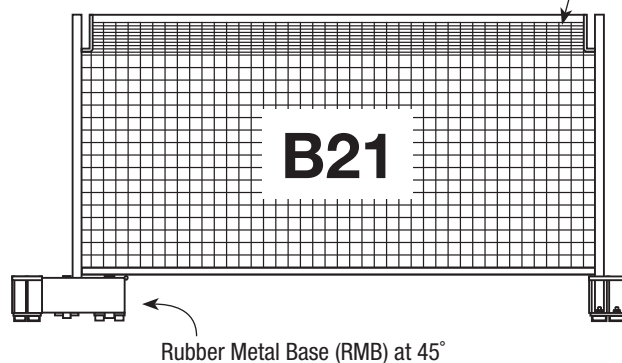
2.5 Place Clip (CLP) level with the underside of the top rail and tighten with a spanner to secure barriers.





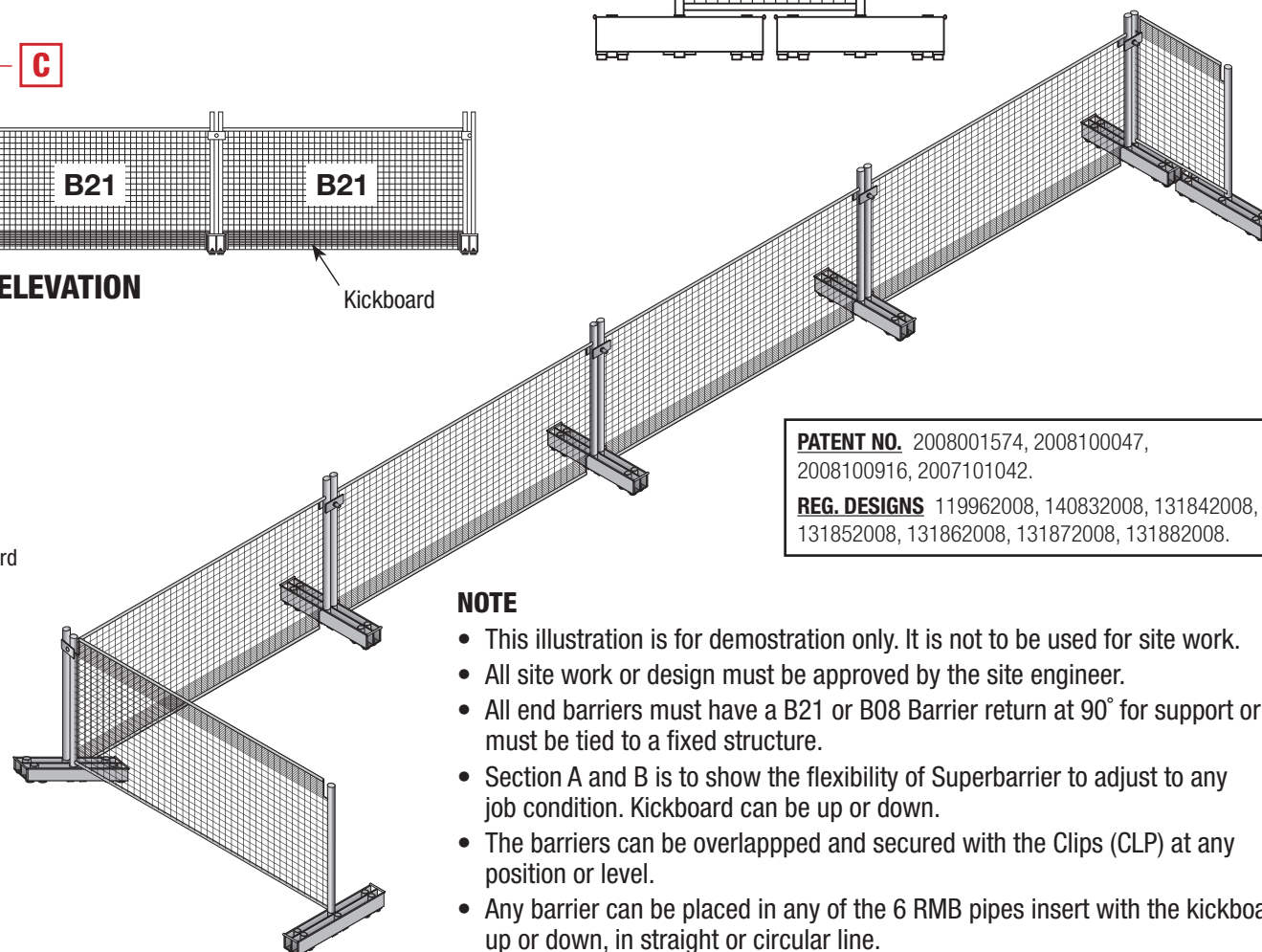
Section B

Shown with B21 Barrier kickboard up



Section A

Shown with B08 Barrier kickboard up to straddle or 'jump over' Rubber Metal Base (RMB).



PATENT NO. 2008001574, 2008100047, 2008100916, 2007101042.
REG. DESIGNS 119962008, 140832008, 131842008, 131852008, 131862008, 131872008, 131882008.

NOTE

- This illustration is for demonstration only. It is not to be used for site work.
- All site work or design must be approved by the site engineer.
- All end barriers must have a B21 or B08 Barrier return at 90° for support or must be tied to a fixed structure.
- Section A and B is to show the flexibility of Superbarrier to adjust to any job condition. Kickboard can be up or down.
- The barriers can be overlapped and secured with the Clips (CLP) at any position or level.
- Any barrier can be placed in any of the 6 RMB pipes insert with the kickboard up or down, in straight or circular line.
- Refer to brochure or instruction manual. The Superbarrier is a very versatile safe barrier that can do many jobs.
- **If in doubt, ask.**

DRAWING 002

January 2009