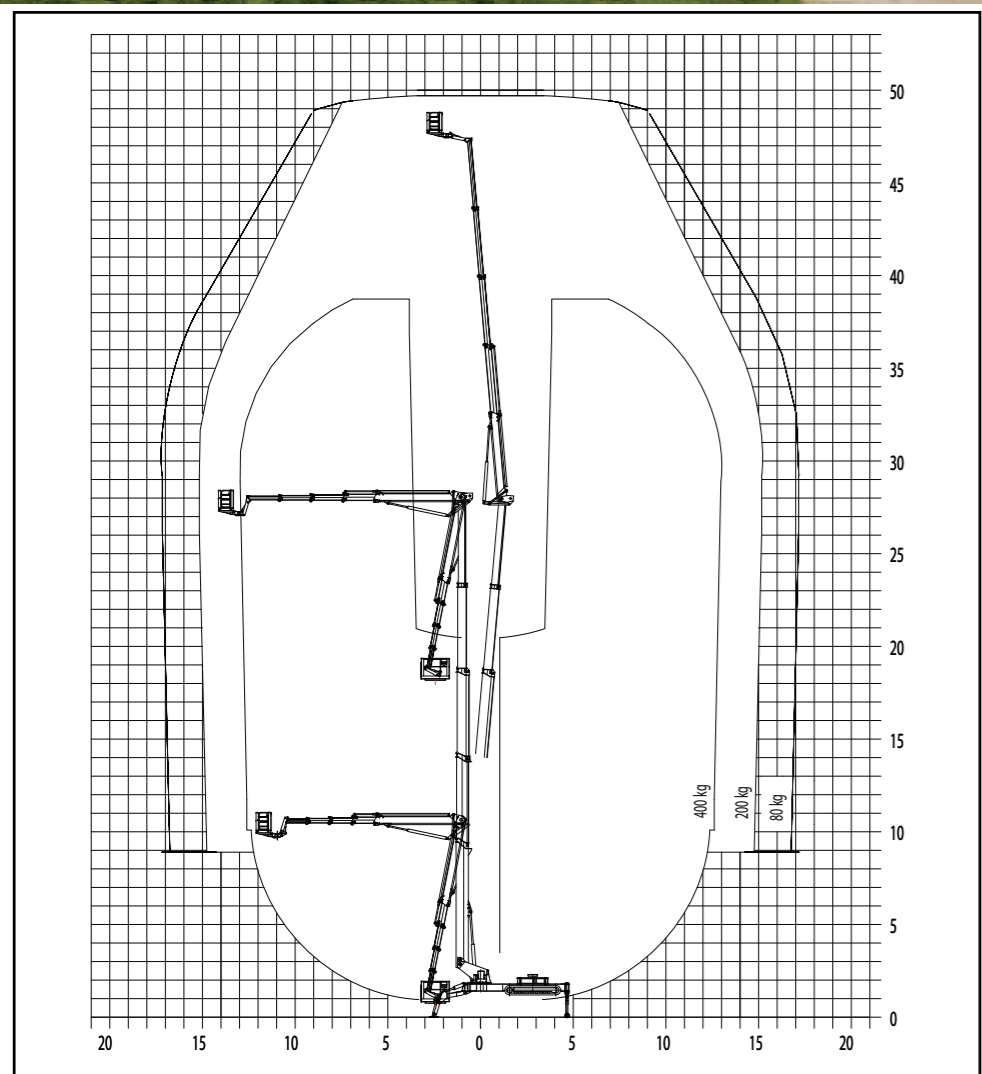


HIGH REACH ACCESS TEUPEN LEO50 GTX

HIGH REACH ACCESS TEUPEN LEO50 GTX



SPECIFICATIONS	
Model	Teupen LEO50 GTX
Working Height 200 kg	Approx. 49.70 m
Cage floor height 200kg	Approx. 47.70 m
Working height 400 kg	Approx. 38.50 m
Cage floor height 400kg	Approx. 36.50 m
Lateral outreach to either side at 80 kgs	Approx. 17.4 m
Lateral outreach to either side at 200 kgs	Approx. 15.2 m
Lateral outreach to either side at 400 kgs	Approx. 13.0 m
Safe load on cage	Maximum 400 kgs
Working cage rot. hydr. around	Approx. 180 deg
Basket change system with basket (LxWxH)	Approx. 1.5 x 0.8 x 1.1 m



DIMENSIONS & WEIGHT	
Overall length in travelling position	Approx. 8.5 m
Overall width in travelling position	Approx. 1.58 m
Overall height in travelling position	Approx. 1.98 m
Trailing load	Approx. 13.6 t
Jacked width (centre of jack plate)	Approx. 5.0 m
Jacked width one side (centre of jack plate)	Minimum 3.76 m
Range of roatation	Approx. 450 deg
Restricted range of rotation one side narrow	120 deg
Size of stabilizing jack plate	Approx. 0.52 m x 0.27 m
Maximum load on jack plate per plate	Approx. 81 kN
Live load in standard work position	Approx. 4.00 kN/m ²
Live load in travelling position (with cordon 11m x 2.5m)	Approx. 4.90 kN/m ²
To be jacked up to ground slope of	Approx. 30 deg
CRAWLING GEAR	
Climbing ability	Approx. 30 deg
Height adjustable crawlers	Approx. 0.5 m
Crawler width	Approx. 0.4 m
Driving speed	Approx. 0-1.6 km/h
Nominal input voltage	400 V / 32A
Type	V 2203-M
Number of cylinders	4 in line
Cubic capacity	2197 ccm
Cooling system	Water cooled
Maximum output	35 kW
Fuel tank capacity	80 litres