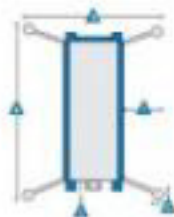


Aerial Work Platforms

DPL™ Super Series™

Specifications



Model	DPL-200		DPL-300		DPL-300	
Measurements	US	Metric	US	Metric	US	Metric
Working height*	20.9' 10"	6.37 m	30.9'	9.41 m	30.9' 10"	9.42 m
Platform height	20.9' 10"	6.37 m	30.9'	9.41 m	30.9' 10"	9.42 m
Height - stored	9.9' 6"	3.03 m	9.9' 6"	3.03 m	9.9' 6"	3.03 m
Length - stored	6.9' 10"	2.13 m	6.9' 10"	2.13 m	6.9' 10"	2.13 m
Width	2.9' 1.6"	.89 m	2.9' 1.6"	.89 m	2.9' 1.6"	.89 m

Productivity

Load capacity (AWP/DAVE)	100 lbs	45 kg	100 lbs	45 kg	100 lbs	45 kg
--------------------------	---------	-------	---------	-------	---------	-------

AWP/DAVE

Duty cycle footprint						
▲ Length	6.9' 10"	2.13 m	7.9' 2.16"	2.41 m	7.9' 2.16"	2.41 m
▲ Width	2.9' 1.6"	.89 m	3.9' 0.96"	1.19 m	3.9' 0.96"	1.19 m
▲ Over access	1.9' 5.6"	.59 m	2.9'	.89 m	2.9'	.89 m
▲ Wall access front	7.9"	.20 m	9.9"	.25 m	9.9"	.25 m
▲ Wall access side	1.9' 4.6"	.59 m	1.9' 10.16"	.59 m	1.9' 10.16"	.59 m

IE

Duty cycle footprint						
▲ Length	6.9' 10"	2.13 m	7.9' 2.20.16"	2.41 m	7.9' 2.20.16"	2.41 m
▲ Width	2.9' 1.6"	.89 m	3.9' 0.75.16"	1.19 m	3.9' 0.75.16"	1.19 m
▲ Over access	1.9' 5.6"	.59 m	2.9'	.89 m	2.9'	.89 m
▲ Wall access front	7.9"	.20 m	9.9"	.25 m	9.9"	.25 m
▲ Wall access side	1.9' 4.6"	.59 m	1.9' 10.16"	.59 m	1.9' 10.16"	.59 m

Platform length	4.9'	1.50 m	4.9'	1.50 m	4.9'	1.50 m
Platform width	2.9' 1.6"	.89 m	2.9' 1.6"	.89 m	2.9' 1.6"	.89 m

Power

Power source AC models	115V / 50-60 Hz or 220V / 50-60 Hz
DC models	12V

Weight**

AWP (DPL200)	1,071 lbs	483 kg	1,171 lbs	489 kg	1,211 lbs	714 kg
AWP (DPL300)	1,081 lbs	473 kg	1,081 lbs	718 kg	1,081 lbs	703 kg
IE (IE)	1,171 lbs	483 kg	1,171 lbs	489 kg	1,211 lbs	714 kg
IE (IE)	1,081 lbs	512 kg	1,081 lbs	718 kg	1,171 lbs	703 kg

Standards Compliance: 6801-001.3, CSA B361.1, EN 280, AS 1008.10

* The metric equivalent of working height adds 2 in to platform height, 2.5' adds 9 in to platform height.
 ** Weight will vary depending on accessories and/or custom modifications.

Features

Standard Features	Options & Accessories
Measurements <ul style="list-style-type: none"> DPL-255 <ul style="list-style-type: none"> • 31 ft 4 in (9.56 m) working height • 29 ft 6 in (7.72 m) platform height • 2 ft 7.5 in (0.83 m) base width • Up to 750 lbs (340 kg) lift capacity DPL-305 <ul style="list-style-type: none"> • 35 ft (10.67 m) working height • 33 ft (10.06 m) platform height • 2 ft 7.5 in (0.83 m) base width • Up to 750 lbs (340 kg) lift capacity DPL-355 <ul style="list-style-type: none"> • 40 ft 10 in (12.50 m) working height • 38 ft 10 in (10.67 m) platform height • 2 ft 7.5 in (0.83 m) base width • Up to 800 lbs (363 kg) lift capacity 	Productivity <ul style="list-style-type: none"> • Operational warning light and descent alarm package (mandatory for CE and AUSA) • Tool tray • Fluorescent tube canopy • Platform rotating laser light Platform <ul style="list-style-type: none"> • 8 ft x 2 x 25 in (0.83 m x 70 cm) Power <ul style="list-style-type: none"> • AC power 180V / 50-60 Hz • AC power 220V / 50-60 Hz • DC power 12V 160-Amp battery
Productivity <ul style="list-style-type: none"> • Large platform with more than 1.2 anchors • Auxiliary platform covering • Most rigid used in the industry • Durable base system • Easily rolls through standard doorways • AC power to platform • Dual activated up/down switch • Ground fault interrupt cover retrofits • Patented outgager interface system • Outgager storage brackets • Safety-rope catcher • Tie-down attachment points • Forklift pocket access on all sides • Angled entry ladder • LED lights combine press set-up of subgigars • Worm attachment points • Locking key switch 	
Power <ul style="list-style-type: none"> • DC models include a 15-amp charging system with 180V / 50-60 Hz or 220V / 50-60 Hz input voltage 	



Genie United States:

13540 NE 19th Street
 PO Box 57028
 Redmond, Washington 98073-0728
 Telephone +1 (425) 866-1933
 Toll Free in U.S. & Canada +1 (800) 476-1933
 Fax +1 (425) 866-5475

Genie Europe:

The Netherlands
 Albert Toes
 Overdamweg 100-108A
 LB
 Telephone +44 (0) 1753 654005
 Fax +44 (0) 1753 654004
 Email: info@genie.nl

Distributed By: