

Features

Standard Features	Early Delivered To Meet Your Needs	Options & Accessories
Measurements Z-34/22 IC 2WD <ul style="list-style-type: none">40 ft 6 in (12.32 m) working height22 ft 3 in (6.78 m) horizontal reach16 ft 11 in (4.94 m) up and over clearanceUp to 300 lbs (277 kg) lift capacity Z-34/22 IC 4WD <ul style="list-style-type: none">40 ft 10 in (12.52 m) working height22 ft 3 in (6.78 m) horizontal reach13 ft (4.07 m) up and over clearanceUp to 600 lbs (277 kg) lift capacity	Platform Options <ul style="list-style-type: none">Steel 4 x 8 m (1.42 m) platformSteel 3 x 10 m (1.17 m) Job <ul style="list-style-type: none">4 ft (1.22 m) jo derrick Engine Options <ul style="list-style-type: none">Terex Kubota D9-910 3-cylinder gas/LPG 21 hp (25.1 kW)Terex Kubota D-1100 3-cylinder diesel 25 hp (18.6 kW)Terex Perkins 403 D11 3-cylinder Diesel 24.5 (18.2kW) Drive Options <ul style="list-style-type: none">2WD4WD Teel Options <ul style="list-style-type: none">Industrial air-bleed*Rough terrain air-bleedIndustrial foam-bleed*Industrial non-marking air or foam-bleed*Rough terrain foam-bleedHigh rotation air-bleed (HARD only)Sticker treated air-bleed	Productivity Options <ul style="list-style-type: none">Platform swing gateHalf-mesh platform inserts with swing gatePlatform top auxiliary railAir line to platformFive remote hydraulic oilBiostopable hydraulic oilAnti-slip protection package**Hoistic environment packageTool trayFluorescent tube cavityFluo cavity panelAlarm packagePlatform work lightsLockable platform control box cover Power Options <ul style="list-style-type: none">Engine gauge packageAC Generator Packages (110 V / 60 Hz - 220 V / 50 Hz, 2000 W)Cold Weather PackageLPG tank 30.5 lbs (15.18 kg) capacity
Productivity <ul style="list-style-type: none">4 ft (1.22 m) jo with 136° working rangeSelf-levelling platformHydraulic platform rotationFully proportional controlsDrive enableAC power cord to platformFlamHorn rattleTilt alarmOvercut alarm360° non-continuous turntable rotationLocking turntable coversZero tailswing and flat feet swingTwo speed wheel motors		
Power <ul style="list-style-type: none">12 V DC auxiliary power		



*HARD only
**Maximum platform weight capacity is 400 lbs.

Genie United States:

10540 NE 16th Street
PO Box 97021
Redmond, Washington 98073-9750
Telephone +1 (425) 866-1900
Toll Free in USA/Canada +1 (800) 633-3900
Fax +1 (425) 866-3475

Genie Europe:

The Maltings
Silver Street
Gwent NP23 5EJ
UK
Telephone +44 (0)1492 544420
Fax +44 (0)1492 544424
Email: enq@genieeurope.com

Distributed By:

Specifications

Booms	Z-34/22 IC 2WD		Z-34/22 IC 4WD	
Measurements	US	Metric	US	Metric
Working height maximum*	40 ft 6 in	12.52 m	40 ft 10 in	12.50 m
Platform height maximum	34 ft 6 in	10.52 m	36 ft 10 in	10.92 m
Horizontal reach maximum	22 ft 3 in	6.78 m	20 ft 3 in	6.18 m
Ry and over clearance maximum	11 ft	3.35 m	15 ft 1 in	4.6 m
▲ Platform height	2 ft 6 in	0.76 m	2 ft 6 in	0.76 m
▲ Platform width	4 ft 6 in	1.42 m	4 ft 6 in	1.42 m
▲ Height - stored	6 ft 7 in	2.00 m	6 ft 9 in	2.06 m
▲ Length - stored	16 ft 5 in	5.04 m	16 ft 7 in	5.09 m
▲ Storage height	7 ft 5 in	2.26 m	7 ft 6 in	2.30 m
▲ Storage length	12 ft 5 in	3.78 m	12 ft 5 in	3.77 m
▲ MSRP	5,999	1,720	6,719	1,990
▲ MSRP base	6,929	1,980	6,929	1,980
▲ Street clearance - dealer	6 ft	1.83 m	6 ft 3 in	1.91 m

Productivity

Lift capacity	600 lbs	227 kg	600 lbs	227 kg
Platform rotation	180°		180°	
Vertical lift rotation	130°		130°	
Turntable rotation	360° non-continuous		360° non-continuous	
Turntable following	20%		20%	
Slow speed - stored	3.2 mph	5.1 km/h	3.2 mph	5.1 km/h
Slow speed - raised**	3.06 mph	4.9 km/h	3.06 mph	4.9 km/h
Stability - stored***	20%		20%	
Turning radius - stored	5 ft 9 in	1.75 m	5 ft 11 in	1.81 m
Turning radius - extended	13 ft 1 in	4 m	13 ft 6 in	4.11 m
Controls	12V DC	proportional	12V DC	proportional
Tires - air-filled	9 x 14.5 in		11 x 16.5 in	high tractive

Power

Power source	The M Series 39-472 3-cylinder gas/10.21 gal (38.1 kW)
	The M Series 5-1125 3-cylinder diesel 20 gal (18.1 kW)
	The M Series 42-211 3-cylinder diesel 24.6/218 kW
Auxiliary power unit	12V DC
Hydraulic tank capacity	19 gal
Fuel tank capacity	21.2 gal

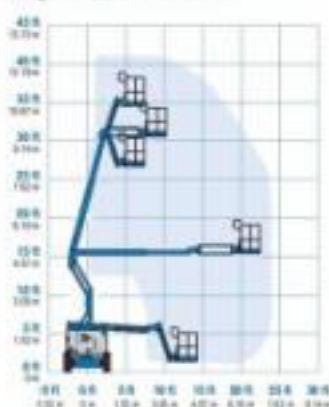
Weights****

	10,100 lbs	4,584 kg	10,000 lbs	4,536 kg
--	------------	----------	------------	----------

Standards Compliance: ANSI A93.5, OSA 8334-A, EN 280, BS 1141.12



Range Of Motion Z-34/22 IC



*The maximum height of working height adds 2 feet platform height to the platform height.
 **At all travel speeds except the maximum designed to operate at less than continuous duty.
 ***Stability is dependent on driving on uneven. See operator's manual for details regarding slope ratings.
 ****Weights will vary depending on options and/or country standards.