

FULLY STAINLESS STEEL BUTTERFLY VALVE

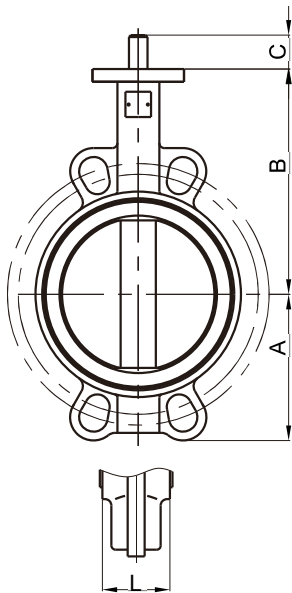


Valve Standard :

Comply with ISO 5752 / BS 5155 /
BS EN 593 / MSS SP-67/API 609

General Applications :

Chemically corrosive media Purification plants
Pharmaceutical Industry
Adhesives, Paper Industry, Fuel Transport
Paint manufacture and processing
Food Industry



Pressure Temperature Ratings

Working Pressure	10bar / 150psi
Testing Pressure	Shell: 15bar / 225psi Seal: 11 Bar / 165psi
Working Temperature	-20°C to 110°C EPDM backed

Material Specification

Part	Material	ASTM
Body	Stainless Steel	A351 CF8M
Disc	Stainless Steel 316	A351 CF8M
Shaft	Stainless Steel 316	A276 S 316 00
Seat	PTFE	
O-Ring	Fluorcarbon Caoutchouc	VITON

Dimensions

Size	mm	40	50	65	80	100	125	150	200
	Inch	1-1/2	2	2-1/2	3	4	5	6	8
A		68	80	89	95	114	127	139	175
B		110	161	175	181	200	213	226	260
C		24	30	30	30	30	30	30	34
L		33	42	45	45	51	55	55	60

Size	Mm	250	300	350	400	450	500	600
	inch	10	12	14	16	18	20	24
A		203	242	267	316	334	370	468
B		292	337	368	400	422	480	562
C		34	34	40	52	52	64	70
L		68	78	78	102	114	127	154