



**Model Number**

**V1S-M16-500**

Receptacles, M12/M16, 4-pin

**Features**

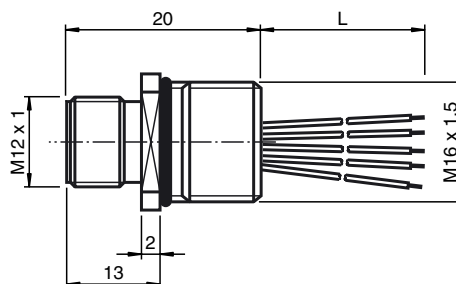
- Front/screw mounting

**Accessories**

**LOCKNUT M16 NICKEL BRASS**

Nut, nickel-plated brass

**Dimensions**



**Technical data**

**General specifications**

Number of pins	4
Connection 1	Male connector
Construction type 1	straight
Threading 1	M12
Connection 2	cable end
UL File Number	E191152

**Electrical specifications**

Operating voltage	$U_B$	max. 250 V DC
Test voltage		> 2000 V <sub>eff</sub> AC
Operating current	$I_B$	max. 4 A
Volume resistance		< 3 mΩ
Insulation resistance		≥ 100 MΩ

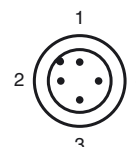
**Ambient conditions**

Ambient temperature	-25 ... 85 °C (-13 ... 185 °F)
Pollution degree	3

**Mechanical specifications**

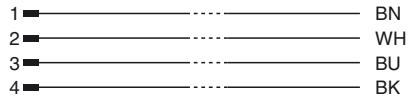
Pin diameter	1 mm
Degree of protection	IP67
Connection	Tinned copper single leads, Ø1.2 ±0.07 mm
<b>Material</b>	
Contacts	CuZn
Contact surface	Ni/Au
Connector	Zinc die-casting, nickel-plated
Seal	NBR
Core insulation	TPE
Cable	TPE
Cores	4 x 0.34 mm <sup>2</sup>
Conductor construction	7 x 0.25 mm Ø
Length	L 500 mm

**Electrical connection**

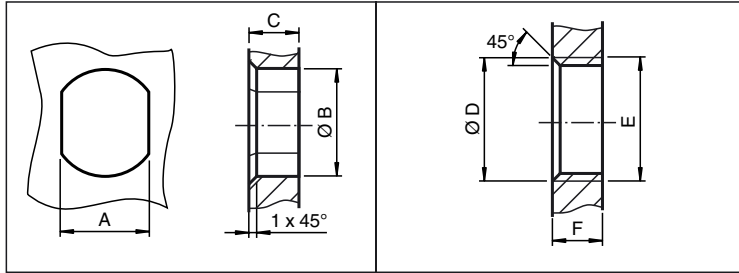


Release date: 2018-03-22 11:19 Date of issue: 2018-03-22 226471\_eng.xml

**Electrical connection**



**Installation Note**



	A	B	C	D	E	F
M8	7.1 <sup>+0.1</sup>	Ø 8.2 <sup>+0.1</sup>	2 - 4 mm	-	M8x0.5	2 - 4 mm
M12	11 <sup>+0.1</sup>	Ø 12.2 <sup>+0.1</sup>	< 4 mm	-	M12x1	< 4.5 mm
M16	13.5 <sup>+0.1</sup>	Ø 16.1	< 4.5 mm	Ø 17 <sup>+0.2</sup>	M16x1.5	> 2.5 mm
M20	13.5 <sup>+0.1</sup>	Ø 20.1	-	Ø 20 <sup>+0.2</sup>	M20x1.5	< 6 mm
PG9	13.5 <sup>+0.1</sup>	Ø 15.3 <sup>+0.1</sup>	< 4.5 mm	Ø 16	PG9	> 2.5 mm
PG13.5	18.8 <sup>+0.1</sup>	Ø 20.5 <sup>+0.1</sup>	-	Ø 22 <sup>±0.1</sup>	PG13.5	-

Release date: 2018-03-22 11:19 Date of issue: 2018-03-22 226471\_eng.xml