



INTELLIGENT



INNOVATIVE
DESIGN



CERTIFIED



SMART
THINGS

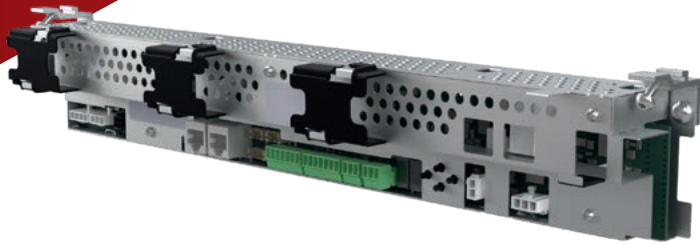
Ditec **DAS200RG** **DAS200TRG**

Automation
for escape route
sliding doors

When every second counts



Intelligent



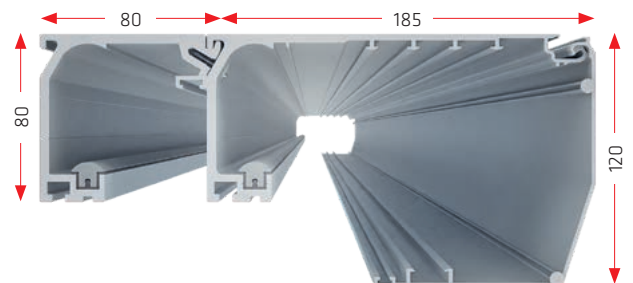
- An advanced control panel which **autonomously tests the functions of each component at regular intervals** and opens the door automatically in the following situations:
 - Power loss
 - Fire alarm signal
 - Partial or total system malfunction
- **Smart start-up** mode with **self-acquisition function**, including automatic detection and recognition of:
 - Passage opening
 - Door weight
 - Anti-panic lock device presence
 - Back-up 24 Vdc battery
- Superior **energy efficiency** with a **switching power supply unit** offering a wide range of operating voltages
- **Digital programming** with over 90 parameters including **speed, timer, position** and **emergency function parameters**



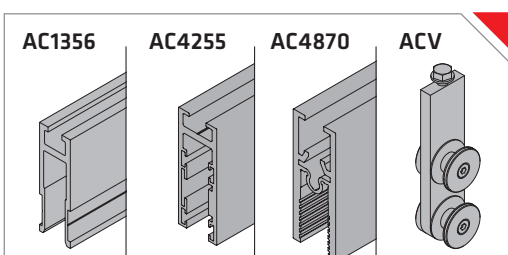
Innovative design

Ditec DAS is designed with the ambitious goal to be an **extremely elegant door system** but at the same time **modular** and **practical**

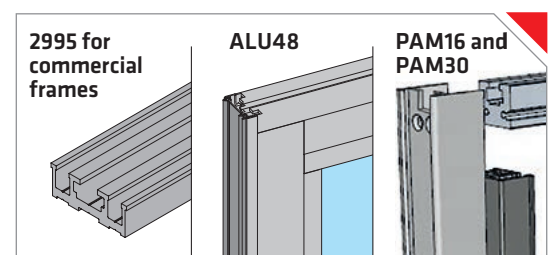
- The **arrow design** on the front creates a **distinctive identity** that is easily recognizable and gives the product a **slim** (120 mm height of cover) and elegant look
 - The horizontal breakline creates a bold and **strong brand image**
- The Ditec design is intended to **make customers' lives easier** and to **optimise stock** management and logistics
- Just **one casing** for all the operators of the DAS200 family
 - A **practical rear beam**, which matches with the main casing, for a fast and safe **telescopic** door installation, reducing the complexity of the old stock
 - The **same carriage unit** and **door holder** for all applications (Ditec framed and glass panel doors, commercial doors)
 - Steel lateral heads for a **secure mechanical connection** to the casing **and an elegant look**



GLASS WING



FRAMED WING



Always safe and connected

Certified



TÜV SÜD certification for DAS200RG and DAS200TRG redundant models, in accordance with the following standards:

- EN 16005:2012 - 1 and 2 - Power operated pedestrian doorsets
- DIN 18650:2010 - 1 and 2 - Power operated pedestrian doorsets
- AutSchR:1997
- TÜV SÜD for TBO, SBO and RBO break-out panic exit systems
- EN 60335 - 1 and 2 - Safety of electrical appliances
- EN ISO 13849 - 1 - Safety of machinery
- 2006/42/EC - Machinery directive
- 2014/30/EU - Electromagnetic Compatibility Directive
- 2011/65/EU - RoHS Restriction of harmful substances
- 1907/2006/EC - REACH Registration, evaluation, authorisation and restriction of chemicals



Smart things

Ditec offers two different **App** based solutions - one of the **end user** and one for the **installer** - for a smart management and control of DAS automatic doors.

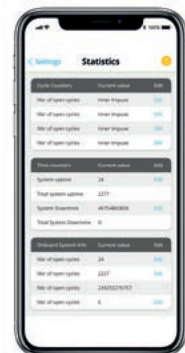
DITEC DOOR CONNECT



Free App available on Play Store and App Store.

For use with latest generation Bluetooth® wireless technology-equipped COM501 and COM502 function-selectors, offering the **end user** access to the following features:

- 5 functions, including **RESET**
- Download and send **events** and **statistics log**
- Download and send **error log**
- Add and manage **App users** (up to 7)
- Manage setting of **partial opening** and **timer-controlled automatic closing parameters**
- **People count** and **flow control management**



SLIDER CONFIGURATION TOOL



An **advanced software** (DAS900CT) **for installers**, allowing the **complete configuration** and management of DAS200 doors from a tablet or handheld device (requires DAS900CTI interface). This software offers the **installer** the following features:

- Usage of 5 controller functions, including **RESET**
- **Configure all parameters** of the control panel
- Download and upload **preset parameter configurations**
- Manage **events** and **errors log**
- Manage complete **statistics log**
- Manage and schedule **maintenance**



Superior in any detail

STURDY AND ELEGANT

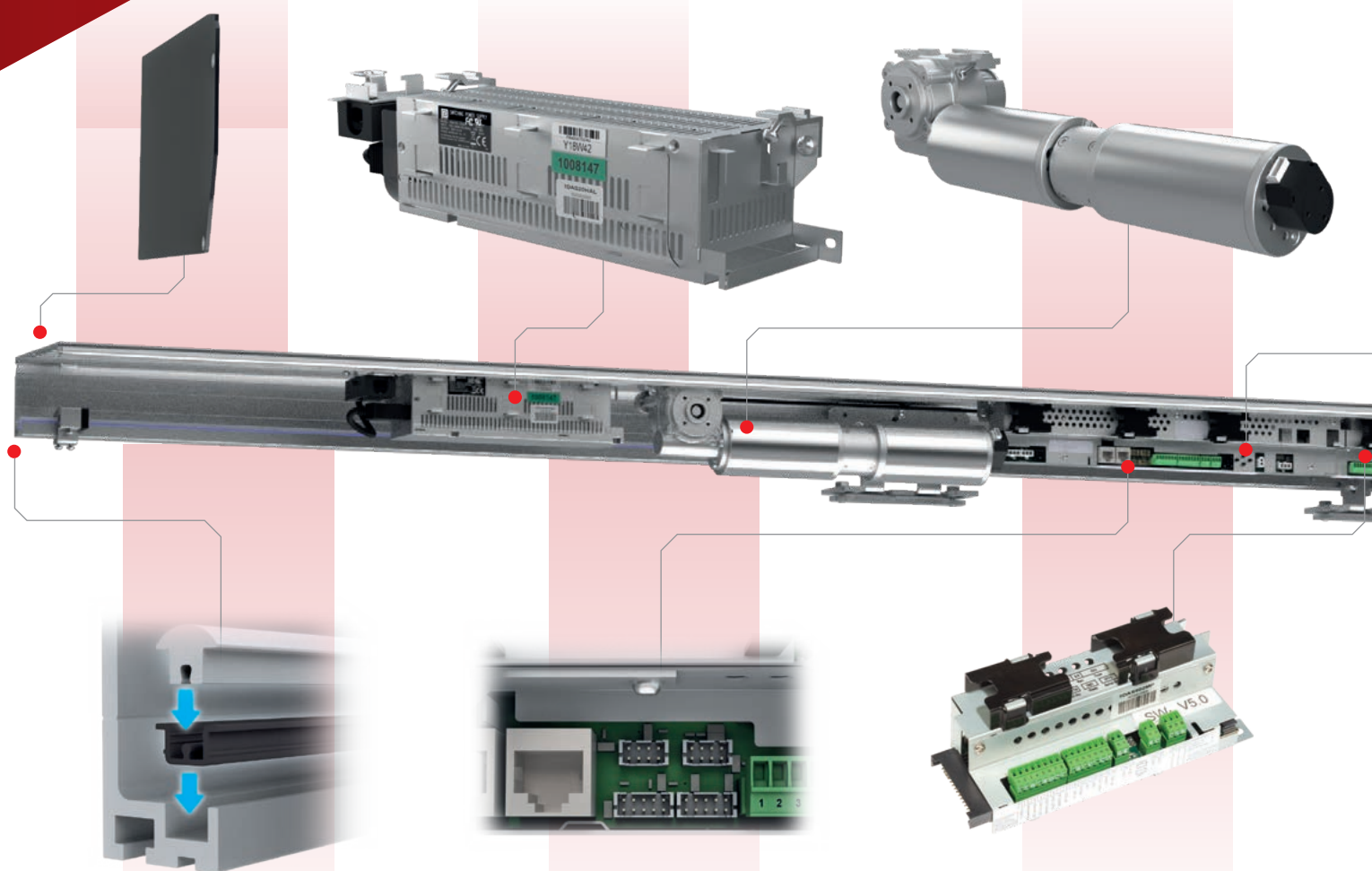
Steel lateral heads

ENERGY SAVING

150 W switching power supply unit
with a wide range of operating voltages
and frequencies
(100 ÷ 240 Vac, -10%/+10%; 50/60 Hz)

HIGH-END COMPONENTS

Gear motor with dual in-line
DUNKERMOTOREN™ DD motors with
integrated encoder



SILENT

Anodized aluminium track
for carriage with
noise-dumping seal

TIME-SAVING & ERROR FREE

PLUG & PLAY connectors for
Ditec range of sensors

WIDE RANGE OF SETTINGS

PLUS MODULE

- Opening impulse
- Fire alarm impulse
- Emergency open impulse
- Relay output

DIGITAL & CONNECTED

Control panel for managing and periodically testing all devices necessary for emergency aperture function. With digital display and 4 buttons for navigating menu

HIGH PERFORMANCE AND LONG LASTING

Carriage with adjustable centre wheel (anti-derail device) and double ball bearing for each wheel

STOCK REDUCTION

Mounting plates for Ditec framed wing, Ditec glass wing and commercial wings



ALL AROUND APPLICATIONS

Anti-panic and bistable door locking devices complete with brackets

SAFE

Emergency 24 Vdc battery

ELEGANT

Built-in release handle

New design, new accessories



- ▶ **COM501MKS**
Mechanical function-selector
with key operation



- ▶ **COM500ER**
Digital electronic function-selector
with security key



- ▶ **COM501ES**
Electronic capacitive touch function-selector with Bluetooth® module and RJ45 plug for Configuration Tool



- ▶ **COM502ES**
Electronic capacitive touch function-selector with Bluetooth® module



- ▶ **COM502ER**
Electronic function-selector with capacitive «touch» push buttons, protection key (Euro cylinder) and Bluetooth® module



- ▶ **OPSEV**
Green emergency pushbutton
with key operated release device



- ▶ **OPSE**
Red emergency button



- ▶ **PAS024ADT - PAS024AMR**
Self-testing dual-technology
(24 GHz microwave and active infrared)
dual function sensors (aperture control
and safety) for sliding doors for
escape routes. 12÷30 Vdc - IP 54
(compliant with EN 16005)



- ▶ **DAS900CTI**
Bluetooth® interface for direct connection
between the Control Panel
and the Slider Configuration tool



DAS200, A GREEN CHOICE



- ▶ **RoHS 2011/65/EU directive:** restriction of hazardous substances
- ▶ **1907/2006/EC REACH:** Registration, Evaluation, Authorisation and Restriction of Chemicals
- ▶ **Switching power supply unit** for lower energy consumption
- ▶ Packaging made with **sturdy** and **environmentally sustainable** compressed paper
- ▶ **QR Code** for downloading manuals simply and quickly



Panic exit systems: break-out solutions

The range of Ditec solutions specifically for escape routes also includes a break-out panic exit system.

The following panic exit aperture systems may be used in conjunction with the Ditec ALU48 series of door perimeter profiles:

- SBO break-out system with sliding door wings on internal side
- RBO break-out system with sliding door wings on external side
- TBO total break-out (mobile wings and fixed wings)

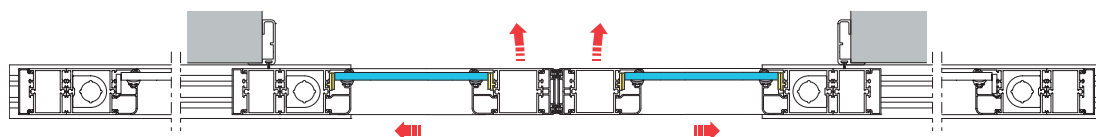


TECHNICAL SPECIFICATIONS

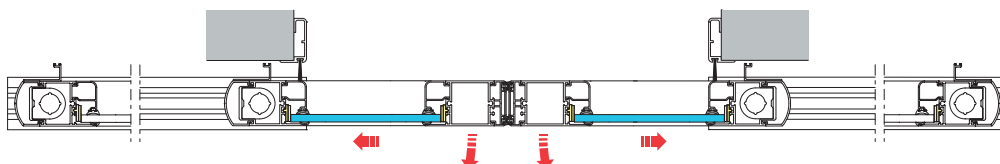
Clear passage width, 1 wing	900 – 1400 mm
Clear passage width, 2 wings	1200 – 2800 mm
Max. door wing weight with DAS107PLUS	1 x 120 kg; 2 x 80 kg
Max. door wing weight with DAS200	1 x 120 kg; 2 x 100 kg
Max. door wing weight with DAS200HD	1 x 120 kg; 2 x 120 kg



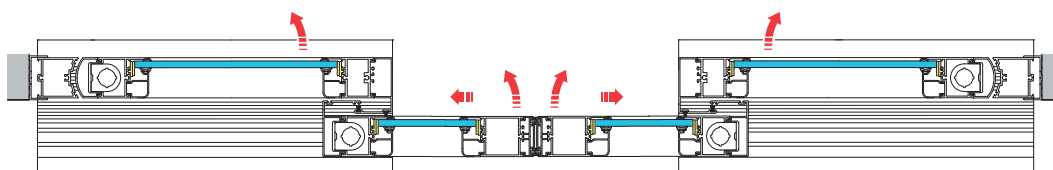
SBO



RBO



TBO



A CHOICE OF EASY TO PICK SPECIFIC ACCESSORIES



- **KASM48**
Break-out kit for mobile door wing



- **KSER48**
Hook lock kit for mobile door wing





TECHNICAL SPECIFICATIONS

	DAS200RG	DAS200TRG
Description	automation for sliding doors	automation for telescopic sliding doors
Special applications	redundant escape route	redundant escape route
Max. wing weight	150 kg (1 wing) 280 kg (2 wings)	240 kg (1+1 wing) 320 kg (2+2 wings)
Clear passage	765 - 3215 mm (1 wing) 865 - 3240 mm (2 wings)	1370 - 4303 mm (1+1 wing) 1587 - 4320 mm (2+2 wings)
Product dimensions (HxWxL)	120 x 185 x L mm	120 x 265 x L mm
Max. opening and closing speed (2 wings)	1.6 m/s	1.6 m/s
Power supply	100 ÷ 240 Vac, -10%/+10%; 50/60 Hz	100 ÷ 240 Vac, -10%/+10%; 50/60 Hz
Power supply rated power	150 W	150 W
Accessories power supply	24 Vdc/1 A	24 Vdc/1 A
Protection rating	IP20	IP20
Approvals	TÜV	TÜV
Control panel	1DAS20RGQE	1DAS20RGQE

© ASSA ABLOY

MAIN FUNCTIONS

Control panel	1DAS20RGQE
Power supply	100 ÷ 240 Vac, -10%/+10%; 50/60 Hz
Batteries	24 Vdc
Hold force adjustment	■
Obstacle detection with adjustable sensitivity (stop while opening or reverse while closing)	■
Automatic passage opening width selection (in relation to traffic)	■
Hold open time	0 - 60 s
Presence hold open time	0 - 60 s
Opening safety function (speed limiting)	■
Battery energy saving function in case of power failure	■
Emergency reverse with presence sensor	■ (compliant with EN 16005)
Safety test and safety monitoring function	■ (compliant with EN 16005)
"Fire alarm" function	■ (optional with DAS902MP)
Emergency opening function	■



Cert. n. 0957/6

Ditec S.p.A.

Largo U. Boccioni, 1
21040 Origgio (VA) • Italy

Part of ASSA ABLOY

Tel +39 02 963911
Fax +39 02 9650314

info@ditecautomations.com
www.ditecautomations.com

P239B - 12/2022
Ditec DAS200RG - DAS200TRG