



QUALITY &
RELIABILITY



TIME SAVING
INSTALLATION



EASY
LOGISTICS

Ditec **DAS107PLUS**

Automation
for commercial
sliding doors

Innovation in every detail

Ditec DAS107PLUS is the sliding door operator able to satisfy all requirements in **standard commercial environments** with frame weight up to **160 kg**. Designed to be **easy and fast** to install, Ditec DAS107PLUS is the perfect choice for professionals in door automation who **look for low inventory cost** and **ease of maintenance**.

ENERGY SAVING

Wide range switching power supply
100 ÷ 240 Vac, -10%/+10%;
50/60 Hz

TIME SAVING & ERROR FREE

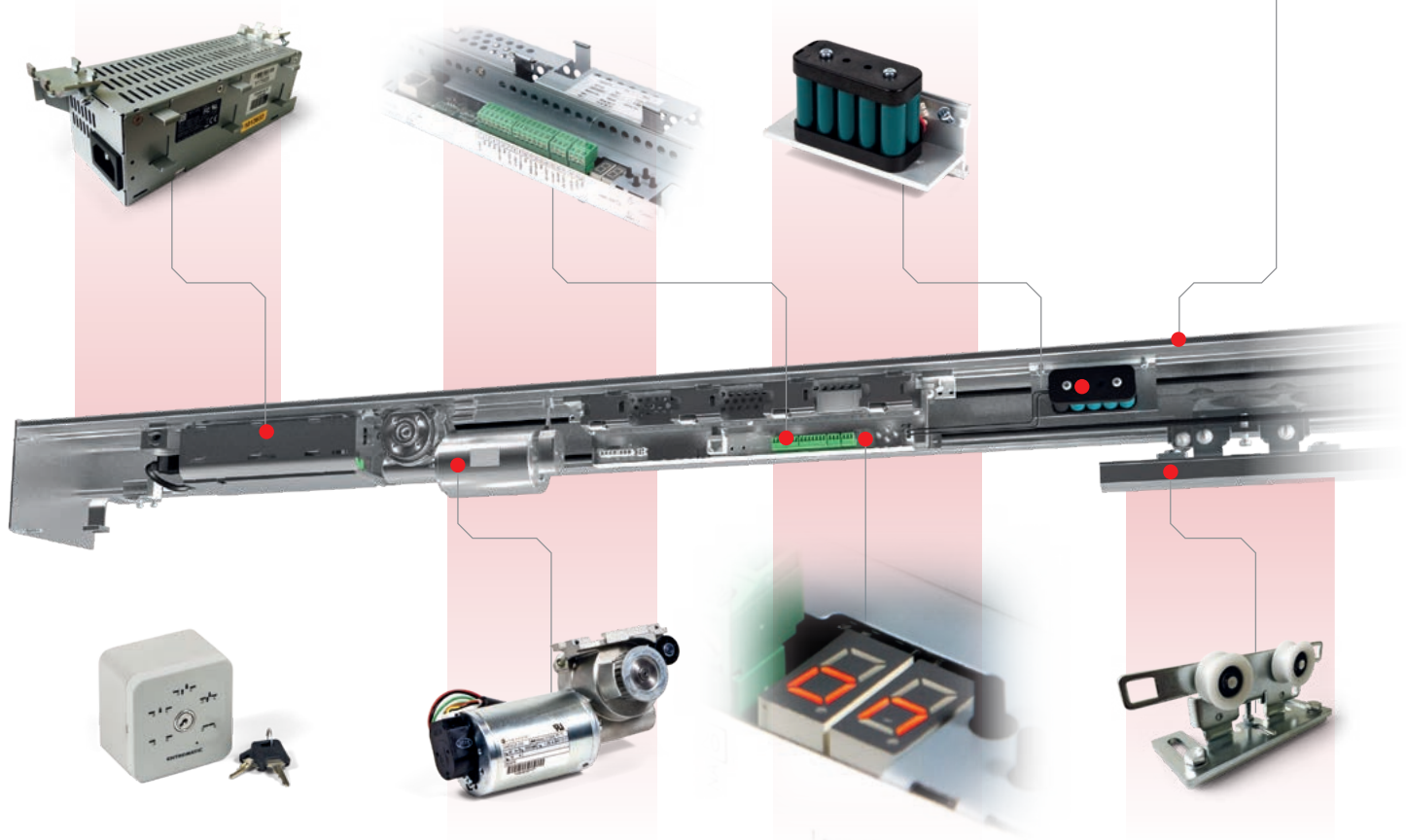
PLUG & PLAY connectors

SAFE

Emergency 12 Vdc or back-up 24 Vdc battery (optional)

STOCK REDUCTION

Anodized alu beam
4450 / 6650 mm



WIDE RANGE OF SETTINGS

Key function-selector with 5 operating modes

HIGH-END COMPONENTS

DUNKERMOTOREN™ gearmotor with built-in encoder

SIMPLE AND ACCURATE

Easy and accurate setting with 2 digit display

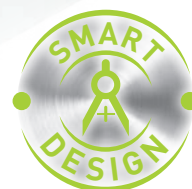
HIGH PERFORMANCE

Trolley with wheels in Dupont™ Delrin® technopolymer and anti-derailing system

SMART DESIGN: SLIM AND COMFORTABLE!

120 mm height is the right size to have an automation with a friendly installation and maintenance.

With a **neutral and pleasant aesthetic** Ditec DAS107PLUS meets the requirements of modern buildings.



Quality and performances without compromises



Quality & reliability

Ditec DAS107PLUS is the sliding door operator focusing on the needs of our customers and featuring **high quality components at the right value**:

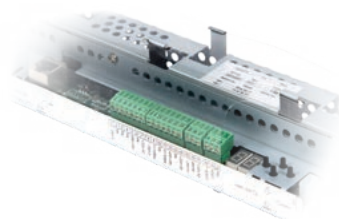
- ▶ Performing electromechanical operator for up to **160 kg** door weight
- ▶ Tested up to **1 Million cycles**
- ▶ Long-lasting 24 Vdc motor with built-in Encoder (brand **DUNKERMOTOREN™**)
- ▶ Reinforced techno-polymer wheels in **DUPONT™ Delrin®**
- ▶ Fully **certified** and tested by **TÜV SÜD**



Time saving installation

Designed for a simple installation, few components to assemble and few parameters to set-up. Ditec DAS107PLUS is the **time saving solution** for any need:

- ▶ **PLUG & PLAY** connectors
- ▶ **Automatic self-learning** start-up mode, with **auto detection** of:
 - weight of wings
 - passage opening
 - presence of locking device and typology (fail safe, fail secure)
 - presence of emergency and back-up batteries
- ▶ Easy and accurate control panel setting with **digital programming** and just few key parameters
- ▶ **Switching power supply** covering a wide range of electric voltages (100 ÷ 240 Vac, -10%/+10%; 50/60 Hz)
- ▶ **Easy adjustment** of trolleys and belt



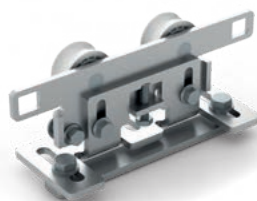
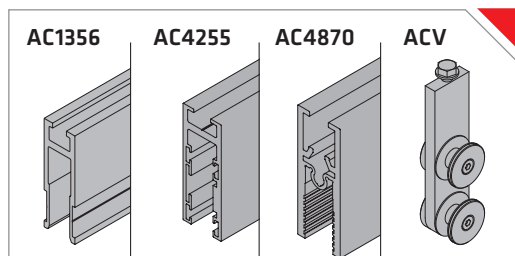
Easy logistics

Ditec DAS107PLUS is the solution to optimize **stock value and manage logistics**:

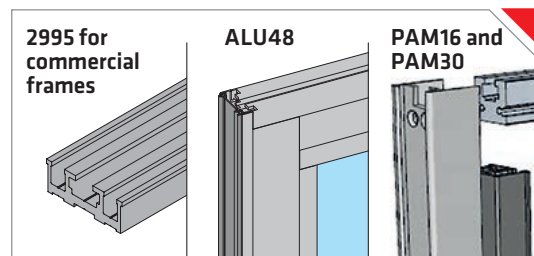
- ▶ Easy to order: **1 kit, 1 beam and 1 cover** and you're ready to start with your **operator**
- ▶ The convenient kit item includes power supply, gear motor, control panel, trolleys and brackets
- ▶ Beam and cover available length: **4450 and 6650 mm**
- ▶ Selected range of accessories to complete your installation
- ▶ **One door holder** for every application, designed in conjunction with **Ditec AC glass profile wing**, **Ditec PAM** and **Ditec ALU** profile series and any **commercial frames**
- ▶ **QR Code** for downloading manuals simply and quickly



GLASS WING



FRAMED WING



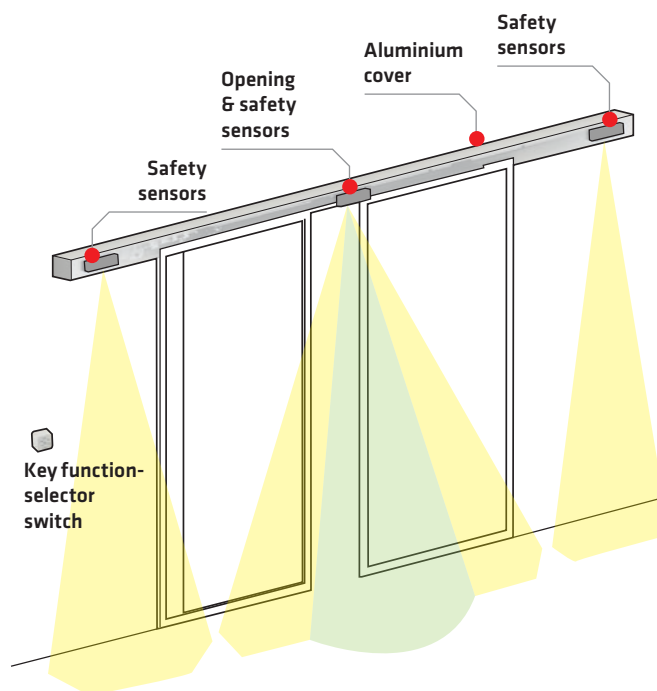
FULL COMPLIANCE WITH EUROPEAN DIRECTIVES AND STANDARDS

- ▶ **2014/30/EU - EMC** - Electromagnetic Compatibility Directive
- ▶ **2006/42/EC** - Machinery Directive
- ▶ **Harmonised EU Standards**: EN 16005:2012; DIN 18650-1:2010; EN ISO 13849-1:2015; EN 60335-1:2012/A11:2014; EN 60335-2-103:2015 (certified by TÜV SÜD); EN 61000-6-3:2007+A1:2011



TECHNICAL SPECIFICATIONS

	DAS107PLUS
Description	automation for sliding doors
Drive type	encoder
Max door panel weight	120 kg (1 wing) / 160 kg (2 wings)
Endurance test	1 M cycles
Gearmotor	24 Vdc with encoder
Power supply	100 ÷ 240 Vac, -10%/+10%; 50/60 Hz
Max nominal power	75 W
Accessories power supply	0.64 A @ 24 Vdc
Opening and closing speed	1.0 m/s bi-part door (adjustable)
Hold open time	0-60 s (adjustable)
Operating temperature	-20°C / +50°C
Protection rating	IP20
Dimensions (H x W x L)	120x140xL mm
Max operator length	5600 mm
Max clear passage (with 50 mm overlap fixed/mobile)	2715 mm (1 wing) 1370 mm x 2 (2 wings)



Ditec DAS107PLUS also for panic exit systems

The following panic exit aperture systems may be used in conjunction with the Ditec ALU48 series of door perimeter profiles, TÜV SÜD certified:

- **SBO** break-out system with sliding door wings on internal side,
- **RBO** break-out system with sliding door wings on external side,
- **TBO** total break-out (mobile wings and fixed wings).

SPECIFIC ACCESSORIES



- **DAS801LOK**
Secure lock with external handle release

- **DAS801LOKA**
Safe lock



- **COM501MK5**
Mechanical function-selector with key operation



- **COM501MHS**
Mechanical function-selector with handle operation



- **COM500ES**
Digital electronic function-selector



- **DAS901BAT1**
Battery kit, 12 Vdc power supply for emergency use only



- **DAS902BAT2**
Battery kit, 24 Vdc power supply for back-up use



- **DAS11M8**
N° 4 fixing plates (n° 2 wings) for AC1356, PAM16 and PAM30



- **DAS18M8**
N° 4 fixing plates (n° 2 wings) for AC4255 and AC4870



- **DAS40M8**
N° 4 fixing plates (n° 2 wings) for ALU48