



SeaGuardII DCP

600KHZ DOPPLER CURRENT PROFILER



SeaGuardII DCP
XA B195 R3 0302 NOR

AANDERAA

a xylem brand



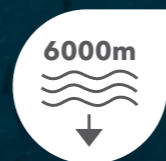
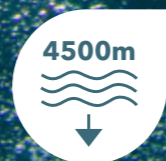
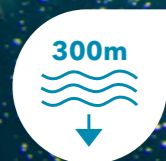
SeaGuardII DCP

Multiparameter Doppler Current Profiler

SeaGuardII DCP is a scalable, easy to use current profiler. Its flexibility makes it the perfect instrument to address all scenarios of ocean observations and monitoring.

SeaGuardII is a smart data hub that combines the SeaGuard electronics with the advanced management firmware of Aanderaa SmartGuard data hub offering impressive capabilities. Combined with the Doppler Current Profiling Sensor, DCPS600, it forms the SeaGuardII DCP.

- Secure data
- Increased deployment time
- Scalable platform
- Automatic tilt/heading correction
- Optimal flexibility
- Smart data quality control
- Modem Support





Unique extendable features

- Plug and Play. Add sensors and strings
- Easy connection of AiCAP sensors
- Integration of 3rd party analog and serial sensors
- RS232/RS422 inputs with power control



Profile flexibility

- User selectable broadband and narrowband
- Several profiles simultaneously
- Surface referred columns
- Measurements of top cm surface current
- Autobeam algorithm for automatic selection of the best 3-beams, if object in one of the beams




Longer deployment time

- 24 months autonomous deployment with 30 minutes sampling
- Reduced power consumption (broadband technology)
- Increased battery capacity; up to 70Ah internal
- Optional user assembled battery



Perfect instrument for buoy and system applications

- Unique motion compensation algorithms for tilt and rotation of every single measurement
- Modem support for direct connection to radio, GPRS, GOES, GSM or Iridium
- Compressed data gives reduced transmission cost
- Store full datasets on SD card and transmit selected data
- Recording and transmission interval may be scheduled independently
- Automatic retransmission of missing datasets




Additional features

- Available with Acoustic wave
- Double the current profiling range by plug-and-play connecting another DCPS sensors
- Measure in the blanking zone combined with a single point current sensor




Real time web based display: Hydrosphere

- Both real time and historical data in graphs
- Data storage and retrieval from included database
- Several stations simultaneously
- Alarms on parameters or missing data



Post processing software: Data Studio

- Efficient data analysis with 2D, 3D graphs
- Cross correlation of different variables
- Data export function
- Free software: 3D-studio



User friendly set up and configuration

- Configuration software for pre-deployment and remote
- Connect via USB, Serial RS-232 / RS-422, remote via modems. Full two-way communication
- Change sensor setting
- Control recording
- Monitor status of the site
- Download of stored data

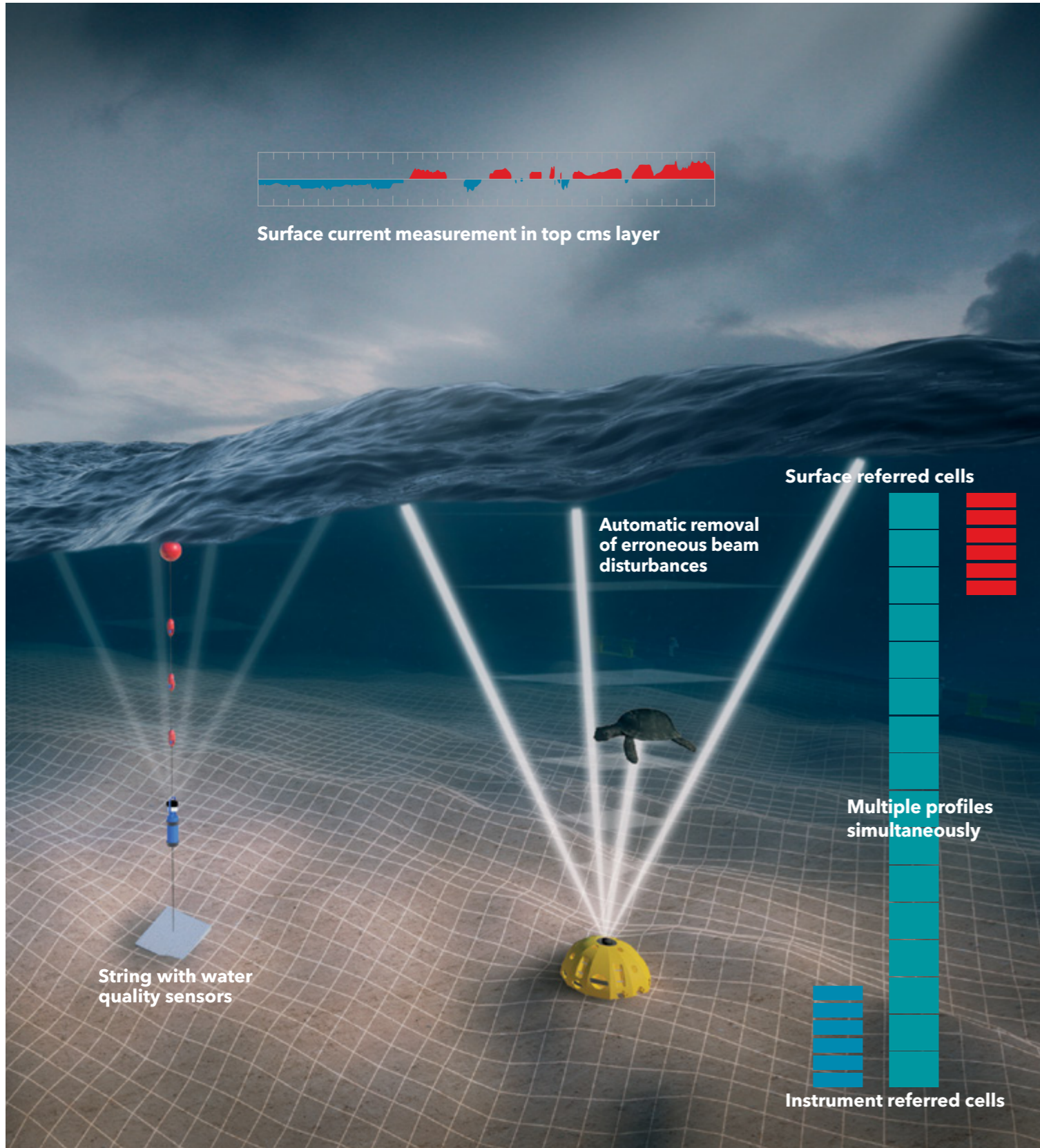


LED indicator

- Visual confirmation of the instrument status



Surface current measurement in top cms layer



The SeaGuardII DCP

600 kHz Doppler Current Profiler

Buoy

- Lower cost by removing the need for additional logger; SeaGuardII is the system data hub
- Lower transmission cost by intelligent transmission interval settings
- Store full datasets and transmit reduced amount of data
- Direct connection and control of modems; radio, GSM, GPRS, Iridium, AIS, GOES

Mooring line

- Upside down mounting
- Full flexibility of additional parameters on top end plate or distributed distributed on a string in the water in the water column using AiCaP CANbus
- 2 serial inputs with power control
- 4 analog inputs
- Plug and play wave, tide, oxygen, conductivity, temperature and turbidity sensors

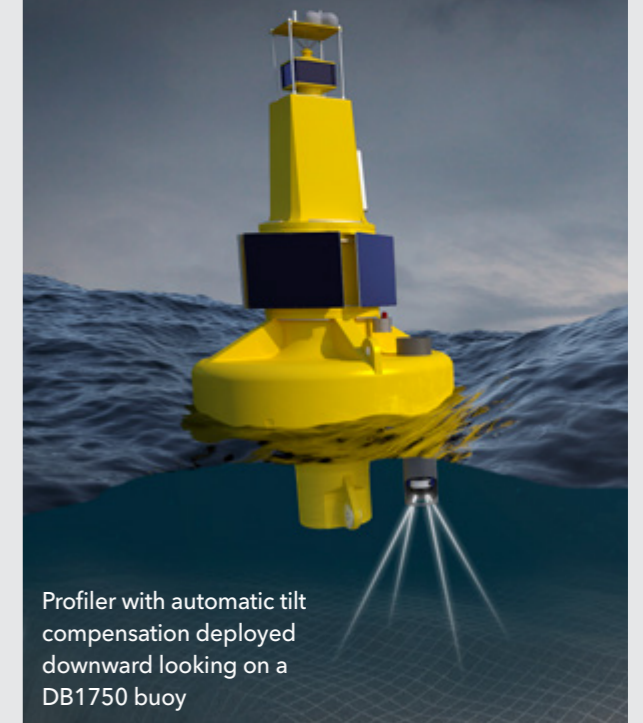
Bottom mounted

- Measure closer to the bottom by combining with Aanderaa's single point current sensor
- Refer current cells to the surface to follow water level changes
- Multi column capabilities
- Surface current in top cms layer
- Additional battery capability

SeaGuardII DCP

- User selectable broadband or narrowband
- Automatic flagging of bad data
- Sensors can be logged at different intervals
- Same power consumption in burst and spread mode when measuring currents
- Advanced tilt compensation for each ping to achieve highest quality current measurements

Remote control and sensor status monitoring of equipment in the field



Profiler with automatic tilt compensation deployed downward looking on a DB1750 buoy



Provide accurate real-time data from our own **DB1750 Buoy platform**. Combining sensors from the Aanderaa Ocean Waves, Ocean Currents, and Water Quality product lines with the **AADI Real-Time Communication system** provide you with a versatile solution for measuring Hydrological, Meteorological, and Water Quality parameters all from a single platform.

Xylem |'zīləm|

- 1) The tissue in plants that brings water upward from the roots;
- 2) a leading global water technology company.

We're a global team unified in a common purpose: creating advanced technology solutions to the world's water challenges. Developing new technologies that will improve the way water is used, conserved, and re-used in the future is central to our work. Our products and services move, treat, analyze, monitor and return water to the environment, in public utility, industrial, residential and commercial building services settings. Xylem also provides a leading portfolio of smart metering, network technologies and advanced analytics solutions for water, electric and gas utilities. In more than 150 countries, we have strong, long-standing relationships with customers who know us for our powerful combination of leading product brands and applications expertise with a strong focus on developing comprehensive, sustainable solutions.

For more information on how Xylem can help you, go to www.xylem.com



Aanderaa Data Instruments AS
Sanddalsringen 5b
P.O. Box 103 Midtun
5843 Bergen, Norway

+47 55 60 48 00
aanderaa.info@xylem.com
Aanderaa.com

SeaGuardIII DCP is a trademark of Xylem or one of its subsidiaries.
© 2023 Xylem, Inc. XA B195 R2 0323



Aanderaa.com