

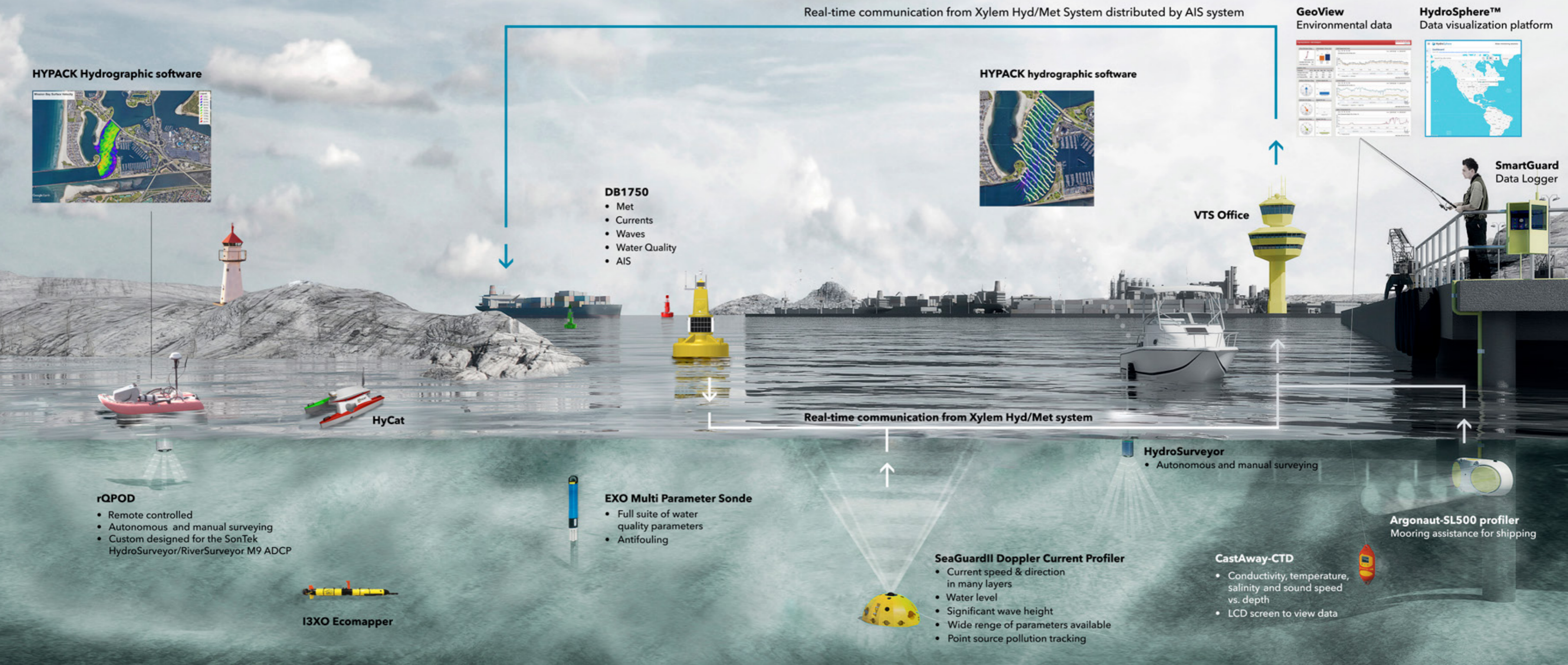


Complete Monitoring Solutions

FROM SHORE TO DEEP OCEAN

OCEAN AND COASTAL MONITORING SOLUTIONS

Integrated systems offer complete solutions for oceans, coasts, ports & harbours



Complete Monitoring Solutions

- Wave and multilayer current monitoring systems
- Water quality monitoring systems
- Real-time data access via web or AIS
- Buoy, lantern, and AIS systems
- Autonomous survey systems and software
- Hydromet systems

AQUACULTURE

COASTAL RESEARCH

ENVIRONMENTAL MONITORING

FERRYBOX

HARBOUR MONITORING

MARINE TRANSPORT

OBSERVATORY

OCEANOGRAPHY

OFFSHORE INSTALLATION

OIL & GAS

OIL SPILL

RECOVERY

SYSTEM INTEGRATION

WEATHER MONITORING

OCEAN CURRENTS

Aanderaa Doppler Current Sensor

The Aanderaa Current Sensors are available single point and profiling versions with three depth ratings for current measurements in natural waters.

The sensors can be used as stand-alone or in systems from Aanderaa.

The single point sensor is also available in a multiparameter hub version.

» Aanderaa.com/stand-alone-current-sensor



Aanderaa Profiling Current Meter

SeaGuardII is the latest generation of multi-parameter instruments from Aanderaa combining current measurement with other ocean parameters in real-time or in-situ. It has the capacity to serve as an underwater observatory.

» Aanderaa.com/profiling-current-meter



Aanderaa RCM Blue

The RCM Blue is a self-recording single-point current meter offering Bluetooth for communications and data retrieval. The instrument uses the ZPulse Doppler Current Sensor for improved data quality.

» Aanderaa.com/rcm-blue



SonTek HydroSurveyor®

The SonTek HydroSurveyor is a nine beam multi-frequency ADCP designed to collect bathymetric, water column velocity profile and acoustic bottom tracking data as part of a hydrographic survey.

» SonTek.com/HydroSurveyor



SonTek-SL Side-Looker Doppler Current Meter

The SonTek Side-Looker is a long-term monitoring solution available in three models for horizontal profiling and water level combined in one single instrument.

» SonTek.com/SonTek-SL-Series



SonTek Argonaut-ADV 3D Velocity Meter

The SonTek Argonaut-ADV is a long-term monitoring solution for single-point 3D velocity measurement. This system provides the highest quality Doppler velocity data without requiring the user to become an expert on Doppler technology.

» SonTek.com/Argonaut-ADV



SonTek Argonaut-XR

The Argonaut-XR offers exceptional value for near shore deployments in less than 40m of water. Designed specifically for mounting on the bottom of a channel or harbor. Features a special mode that automatically adjusts one of its measurement cells for changing water level.

» SonTek.com/Argonaut-XR



OCEAN WAVES



DB1750

Deployed in over 40 countries, the MOTUS buoy combines the wave and current measurements with water quality sensor packages in one rugged platform. A selection of different communication solutions is available to ensure real-time data to shore.

» Aanderaa.com/Motus-Buoy



MOTUS Directional Wave Sensor

The MOTUS Wave Sensor is an integrated part of MOTUS buoy, but also suitable for other third party buoys. The sensor processes wave data and is configurable to present parameters and wave spectrum directly. The sensor can be connected to a SmartGuard and other data loggers. Motus has been installed on buoys up to ten meters in diameter.

» Aanderaa.com/motus-stand-alone



Aanderaa SeaGuardII DCP Wave

The SeaGuardII DCP Wave is a Doppler current profiler with multi-sensor capabilities and a range of up to 80 meters depending on local conditions. The instrument can be used bottom mounted or upside down from e.g. buoy or string with wave direction in real time.

» Aanderaa.com/profiling-current-meter-wave



Aanderaa Wave and Tide Sensor

A compact fully integrated sensor for measuring wave and tide conditions. Designed to be mounted on the Aanderaa SeaGuard top-end plate or connected to SmartGuard using AiCaP CANbus or in other measurement systems using the RS-232 interface. The 5218R sensor is designed for use with long cables by means of RS-422 full duplex interface.

» Aanderaa.com/pressure-based-waves



● DATALOGGERS

Aanderaa SmartGuard

A datalogger designed for easy set-up and integration with Aanderaa sensors as well as a range of third party sensors. Tailored for Hyd/Met stations and data buoys with a wide range of telemetry options such as 3G modem, AIS, VHF/UHF radio, Iridium and GOES. Connect in 3 ways: LAN, Serial Port or USB.

» Aanderaa.com/smartguard



YSI Storm 3 Data Logger

Incorporates a balanced set of inputs for analogue, digital I/O and SDI-12 smart sensors to allow communication through cellular modems and GOES satellite. Easy to configure and to log data using the browser based graphical user interface (GUI).

» YSI.com/Storm3



● AUTONOMOUS & MODULAR REMOTE SURVEY BOAT SYSTEMS

rQPOD

A modular system that when attached to a standard size Torrent Board housing a SonTek HydroSurveyor/RiverSurveyor M9 ADCP, transforms into a motorized platform facilitating remote shore operation for easy collection of ADCP data, using SonTek RiverSurveyor Live software to collect river discharge measurements or HYPACK software for bathymetric survey.

» SonTek.com/rQPOD



YSI HYCAT

The YSI HYCAT ASV (Autonomous Surface Vehicle) provides a total solution for your site. Capabilities include: water quality, side-scan sonar, bathymetry, real-time positioning, water velocity, depth measurement, remote data acquisition and more

» YSI.com/HYCAT



YSI i3XO EcoMapper

The YSI i3XO Autonomous Underwater Vehicle provides high resolution water quality data, side scan sonar imaging, downward looking current profiling, and bathymetric surveying.

» YSI.com/EcoMapper



● SOFTWARE & DISPLAY SOLUTIONS

Aanderaa GeoView

GeoView is a web-based Real-Time solution for environmental data display. Vast opportunities for interfacing meteorological, oceanographic or other environmental research equipment in a networked solution.

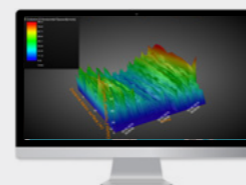
» Aanderaa.com/geoview



Aanderaa DataStudio3D

Aanderaa has developed their own propriety software, DataStudio3D. Download field data and plot them on different graphical plots. Compare parameters, view trends, anomalies, and control the data quality.

» Aanderaa.com/datastudio3d



Aanderaa Stand Alone Smart Sensors

Aanderaa Smart Sensors process data, including linearization, scaling and necessary compensation in the sensor to output engineering values. Sensors available are serial and AiCaP bus sensors; Doppler Current Sensor, Oxygen Optode, Turbidity, Pressure/Tide/Wave, Conductivity/ Salinity and Temperature Sensors.

» Aanderaa.com/water-quality



SonTek CastAway-CTD

The SonTek CastAway-CTD is a handheld deployable conductivity, temperature and depth instrument for hydrographic profiling. An integrated LCD screen displays an intuitive user interface for deployment and immediate review of collected data including both statistics and profile plots.

» SonTek.com/CastAway-CTD



YSI EXO2 & EXO3 Multiparameter Water Sondes

The EXO multiparameter water quality sondes are challenging marine and freshwater conditions. Biofouling control for extended deployments with Wiper and copper-alloy parts. Ammonium (freshwater), Barometric pressure, Chloride (freshwater) Conductivity/Salinity/Temperature, Depth, Dissolved Oxygen, fDOM, vented level, Nitrate (freshwater) pH/ORP, Total Algae, Turbidity, TDS/TSS calculated and/or user referenced samples.

» YSI.com/EXO



● MONITORING WATER LEVEL

Aanderaa Tide & Pressure

The Aanderaa® Tide & Pressure sensors are compact fully integrated sensors for measuring pressure and tide conditions, based on measuring the hydrostatic pressure and water temperature in a fixed submerged position.

» Aanderaa.com/tide-sensor



YSI Nile Radar Sensor

Designed for non-contact water level measurement, the Radar series incorporates an LCD display, low current operation and a high accuracy data with an out-of-the-box measurement range of up to 70m.

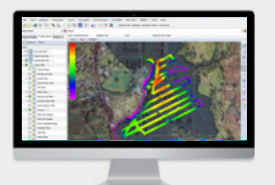
» YSI.com/Nile



HYPACK Hydrographic Software

HYPACK provides all the tools needed to design your survey, collect hydrographic data, process it, reduce it, and generate final products - or just positioning your vessel in an engineering project.

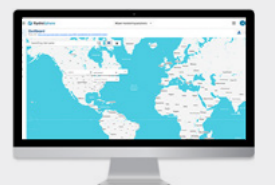
» HYPACK.com



YSI HydroSphere™

HydroSphere™ is a scalable collaborative data visualization platform for outdoor water monitoring. Create public websites for visualization of customizable graphs, tables and dashboards, data-driven alarms and customizable escalation.

» YSI.com/HydroSphere



Xylem |'zīləm|

- 1) The tissue in plants that brings water upward from the roots;
- 2) a leading global water technology company.

We're a global team unified in a common purpose: creating advanced technology solutions to the world's water challenges. Developing new technologies that will improve the way water is used, conserved, and re-used in the future is central to our work. Our products and services move, treat, analyze, monitor and return water to the environment, in public utility, industrial, residential and commercial building services settings. Xylem also provides a leading portfolio of smart metering, network technologies and advanced analytics solutions for water, electric and gas utilities. In more than 150 countries, we have strong, long-standing relationships with customers who know us for our powerful combination of leading product brands and applications expertise with a strong focus on developing comprehensive, sustainable solutions.

For more information on how Xylem can help you, go to www.xylem.com



Bergen | Norway

- +47 55 60 48 00
- aanderaa.info@xylem.com
- Aanderaa.com



Middletown | USA

- +1 (860) 635-1500
- sales@hypack.com
- www.hypack.com



San Diego | USA

- +1 (858) 546-8327
- inquiry@sontek.com
- www.sontek.com



Ohio | USA

- +1 (937) 767-7241
- info@YSI.com
- YSI.com

