



SENSORS &  
CONTROLLERS



ANALYZERS  
& SAMPLERS



LEVEL, FLOW  
& PRESSURE



WEB APP &  
DATALOGGING



ACCESSORIES

# S411/IND/DIG DATASHEET

## DIGITAL INDUCTIVE CONDUCTIVITY SENSOR



### MAIN FEATURES

- Presence of 4 possible scales with one or two point calibration
- Sturdy body in loaded PPS
- Immediate installation

### APPLICATIONS

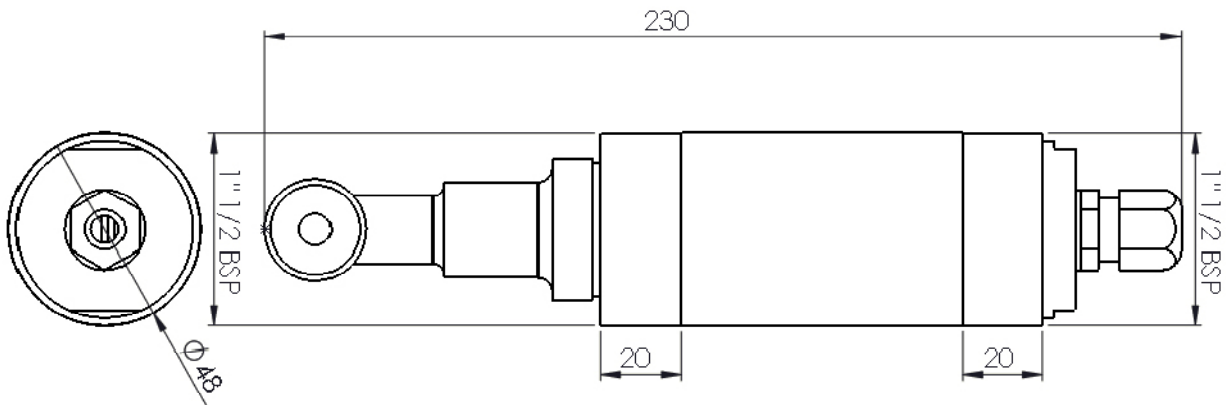
Measure conductivity in dirty water conditions up to 1S, easily interfaced with data acquisition systems thanks to the modbus RTU RS485 protocol

- Inductive conductivity measure in conductive liquids, waste water, primary water.

## TECHNICAL DATA

Materials	• Glass filled PP and PPS body, Viton (O-ring)
Thread	1" 1/2 GAS BSP
Measuring ranges	0.5÷2 mS/cm 2÷20 mS/cm 5÷200 mS/cm 10÷1000 mS/cm
Measuring method	Inductive without contact electrodes
Resolution	0.01 mS/cm [0.5÷2 mS/cm] 0.1 mS/cm [2÷20 mS/cm] 1 mS/cm [5÷200 mS/cm] 1 mS/cm [10÷1000 mS/cm]
Accuracy	+6% on the reading point
Repeatability	+3%
Response	T <sub>90</sub> < 60s
Temperature compensation	Automatic with built-in PT100
Working temperature	5÷60 °C
Max working pressure	From vacuum to 6.5 bar
Mechanical protection	IP68 (sensor + cable) IP67 Connector
Cable	10m integral with the connector on the instrument side
Power supply	12...24Vdc
Signal interface	RS485 Modbus RTU Standard Protocol
Calibration	After connecting the probe to controller with the supplied cable. Refer to the instrument manual for the calibrations.
Salinity	0-120 g / kg (programmable conversion factor)

## DIMENSIONS



## ORDER CODE

9731010097

S411/IND/DIG Digital inductive Conductivity probe 10m cable