



Superior Clamping and Gripping



## Product Information

Universal gripper PZN-plus 200

# PZN-plus

Universal gripper

## Reliable. Robust. Flexible. Universal gripper PZN-plus

Universal 3-finger centric gripper with high gripping force and maximum moments due to multi-tooth guidance

### Field of application

multi- purpose thanks to a diverse range of accessories. Can also be used in fields of application with special requirements to the gripper (temperature, chemical resistance, dirt, and many more).

### Advantages – Your benefits

**Robust multi-tooth guidance** for precise handling

**High maximum moments possible** suitable for using long gripper fingers

**Wedge-hook design** for high power transmission and synchronized gripping

**Air supply via hose-free direct connection or screw connections** for flexible pressure supply in all automated systems

**Comprehensive sensor accessory program** for versatile querying possibilities and stroke position monitoring

**Manifold options** for special optimization for your specific case of application (dustproof, high-temperature, corrosion-protected, etc.)

**Fastening at one gripper side in two screw directions** for universal and flexible gripper assembly



Sizes  
Quantity: 11



Weight  
0.13 .. 80 kg



Gripping force  
255 .. 57300 N



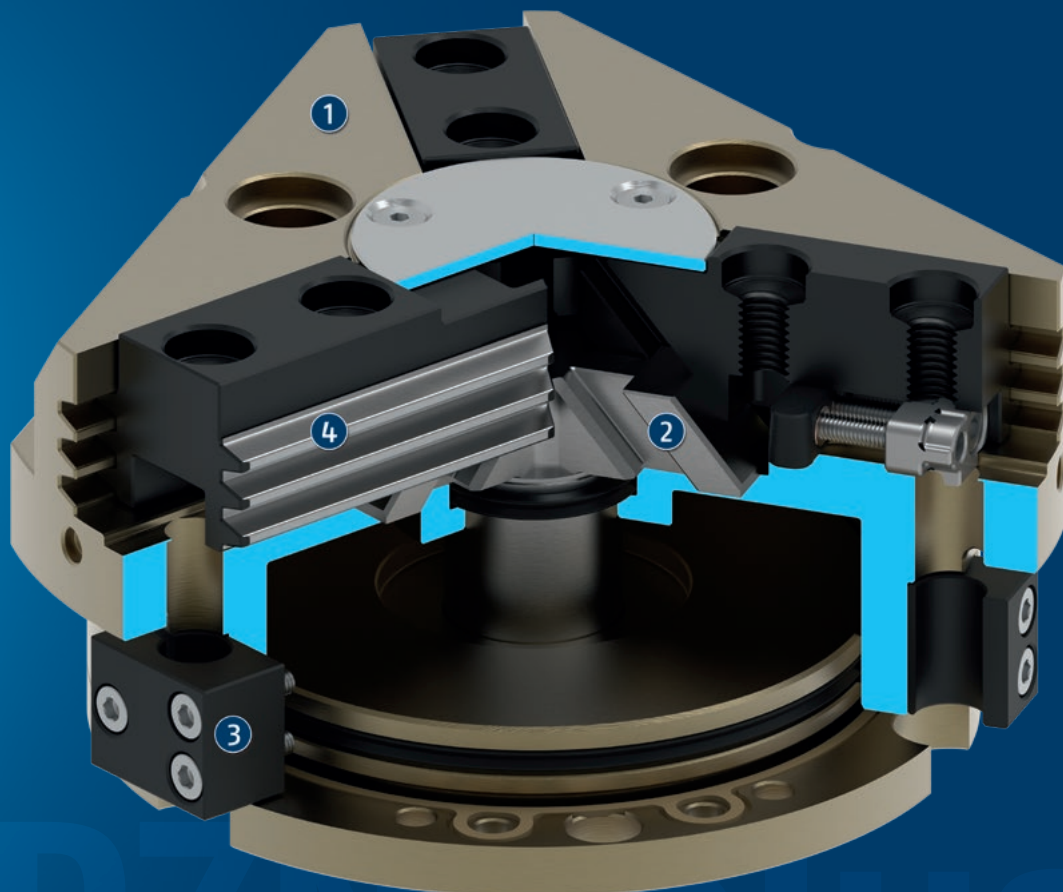
Stroke per jaw  
2 .. 45 mm



Workpiece weight  
1.3 .. 227 kg

## Functional description

The piston is moved up and down by compressed air.  
The angled active surfaces of the wedge-hook produce a synchronized, centric jaw movement.



- ① **Housing**  
is weight-optimized due to the use of high-strength aluminum alloy
- ② **Wedge-hook design**  
for high force transmission and centric gripping
- ③ **Sensor system**  
Brackets for proximity switches and adjustable control cams in the housing
- ④ **Multi-tooth guidance**  
precise gripping through base jaw guidance with a high load capacity and a minimum Play

## General notes about the series

**Operating principle:** Wedge-hook kinematics

**Housing material:** Aluminum alloy, anodized

**Base jaw material:** Steel

**Actuation:** pneumatic, with filtered compressed air as per ISO 8573-1:2010 [7:4:4].

**Warranty:** 36 months

**Scope of delivery:** Brackets for proximity switches, centering sleeves, O-rings for direct connection, assembly instructions (operating manual with declaration of incorporation is available online)

**Gripping force maintenance device:** possible by using the version with mechanical gripping force maintenance or pressure maintenance valve SDV-P

**Gripping force:** is the arithmetic sum of the individual force applied to each jaw at distance P (see illustration).

**Finger length:** is measured from the reference surface as the distance P in direction to the main axis.

The maximum permissible finger length applies until the nominal operating pressure is achieved. With higher pressures, the finger length must be reduced proportionally to the nominal operating pressure.

**Repeat accuracy:** is defined as a distribution of the end Position for 100 consecutive strokes.

**Workpiece weight:** is calculated for force-fit gripping with a coefficient of static friction of 0.1 and a safety factor of 2 against workpiece slippage at acceleration due to gravity g. For form-fit or capture gripping, there are significantly higher permissible workpiece weights.

**Closing and opening times:** are purely the times that the base jaws or fingers are in motion. Valve switching times, hose fill times, or PLC reaction times are not included, and are to be considered when cycle times are calculated.

**Cleanroom class ISO 14644-1:1999:** 5

## Application example

Insertion tool for assembly of small to medium-sized axes. Due to the rotary feed-through, the axes can be rotated several times infinitely ( $> 360^\circ$ ) during the assembly process. Slip ring contacts integrated in the rotary feed-through reliably supply the gripper with power.

- 1 Rotary feed-through DDF 2
- 2 Quick-change system SWS
- 3 3-finger centric gripper PZN-plus



## SCHUNK offers more ...

The following components make the product even more productive – the suitable addition for the highest functionality, flexibility, reliability, and controlled production.



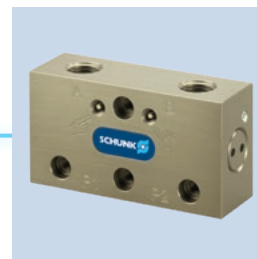
Compensation unit



Universal intermediate jaw



Jaw quick-change system



Pressure maintenance valve



Inductive proximity switches



Magnetic switches



Finger blank

① For more information on these products can be found on the following product pages or at [schunk.com](http://schunk.com).

## Options and special information

**Gripping force maintenance version AS/IS:** The mechanical gripping force maintenance version ensures minimum gripping force even in the event of a pressure drop. In the AS/S version this acts as a closing force, in the IS version as an opening force.

**Anti-corrosion version K:** for use in corrosion-inducing atmospheres

**High-temperature version VHT:** for use in hot environments

**Power booster version KVZ:** if higher gripping forces are required

**Dustproof version SD:** absolutely dustproof, increased degree of protection against ingress of materials.

**Precision version P:** for the highest accuracy

**ATEX version EX:** for explosive environments

**Additional versions:** Various options can be combined with each other.

**H1G compliant grease:** for use in the food and pharmaceutical industries

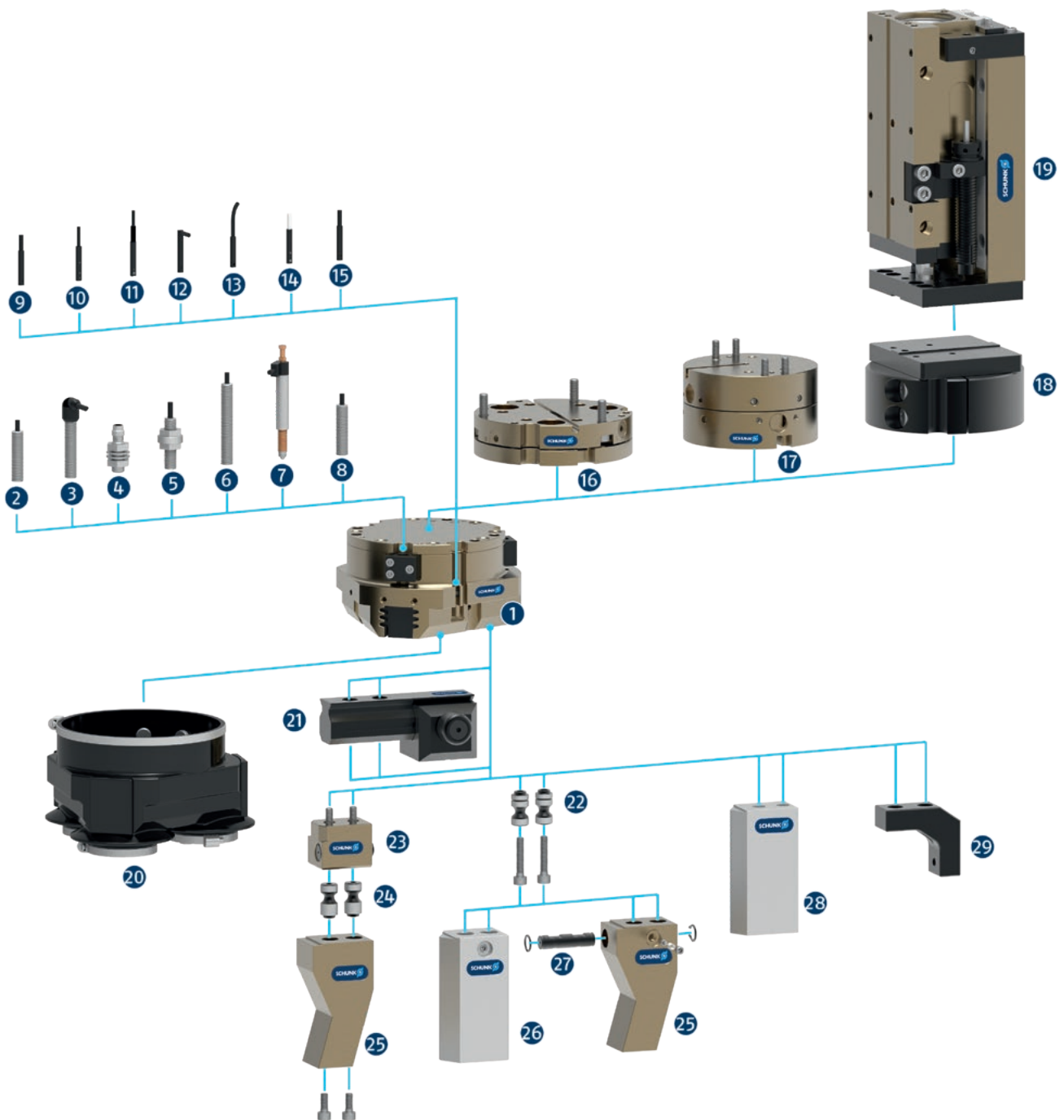
**NEW: H1 grease version H1G:** with H1 compliant lubrication as a solution for easy entry into medical technology, lab automation, the pharmaceutical industry and food industry

# PZN-plus

Universal gripper

## SCHUNK gripper PZN-plus

### Overview Accessories





- 1 **PZN-plus**  
Universal 3-finger centric gripper with high gripping force and maximum moments due to multi-tooth guidance

## Sensor system

- 2 **IN ...**  
Inductive proximity switch with molded cable and straight cable outlet
- 3 **IN ...-SA**  
Inductive proximity switch with molded cable and lateral cable outlet
- 4 **IN-C 80**  
Inductive proximity switch, directly pluggable
- 5 **FPS**  
Flexible position sensor for monitoring up to five different, freely selectable positions
- 6 **APS-Z80**  
Inductive position sensor for precise position detection of the gripper jaws with analog output
- 7 **APS-M1S**  
Mechanical measuring system for precise position detection of the gripper jaw with analog output
- 8 **RMS**  
Reed switch in round version
- 9 **MMS 22**  
Magnetic switch with straight cable outlet for monitoring a position  
  
**MMS 22-PI1**  
Magnetic switch with straight cable outlet for monitoring a freely programmable position
- 10 **MMS 22-PI2**  
Magnetic switch with straight cable outlet for monitoring two freely programmable positions
- 11 **MMS 22-PI1-HD**  
MMS 22-PI1 in robust design  
  
**MMS 22-PI2-HD**  
MMS 22-PI2 in robust design
- 12 **MMS 22-SA**  
Magnetic switch with lateral cable outlet for monitoring a position  
  
**MMS 22-PI1-SA**  
Magnetic switch with side cable outlet for monitoring a freely programmable position
- 13 **MMS-P**  
Magnetic switch with straight cable outlet for monitoring two freely programmable positions
- 14 **MMS 22-A**  
Analog magnetic switch with straight cable outlet for measuring the gripper jaw position with analog output and teach function

- 15 **RMS 22**  
Reed switch for direct assembly in the C-slot

## Complementary products

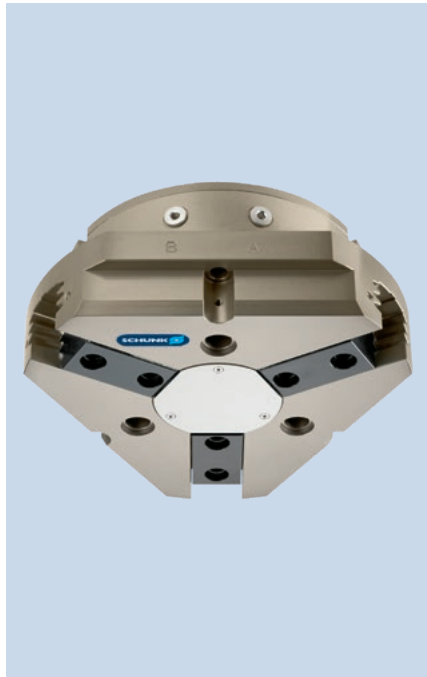
- 16 **TCU**  
Tolerance compensation unit for compensating small tolerances in the plane
- 17 **AGE**  
Compensation unit for compensation of large tolerances along the X and Y axes
- 18 **ASG**  
Adapter plate for combining various automation components in the modular system
- 19 **CLM**  
Linear module with pneumatic drive and scope-free pre-loaded junction rollers
- 20 **HUE**  
Sleeve for protection against dirt

## Finger Accessories

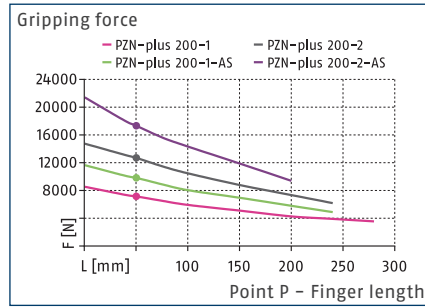
- 21 **UZB**  
The universal intermediate jaw allows fast tool-free and reliable plugging and shifting of top jaws at the gripper.
- 22 **BSWS-AR**  
Adapter coupling of jaw quick-change system for fast, manual change of top jaws
- 23 **BSWS-B**  
Locking mechanism of the jaw quick-change system for fast, manual exchange of top jaws
- 24 **BSWS-A**  
Adapter coupling of the jaw quick-change system for adaptation to the customized finger
- 25 **Customized fingers**
- 26 **BSWS-ABR**  
Finger blank made of aluminum with interface to the jaw quick-change system  
  
**BSWS-SBR**  
Finger blank made of steel with interface to the jaw quick-change system
- 27 **BSWS-UR**  
Locking mechanism for the integration of the jaw quick-change system into customized fingers
- 28 **ABR/SBR**  
Finger blanks made of steel or aluminum with standardized screw connection diagram
- 29 **ZBA**  
Intermediate jaws for reorientation of the mounting surface

# PZN-plus 200

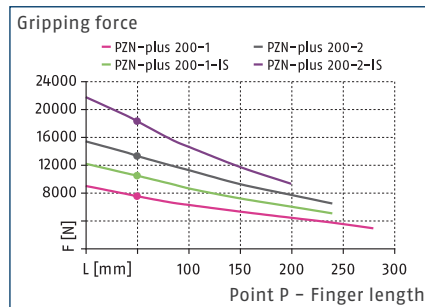
Universal gripper



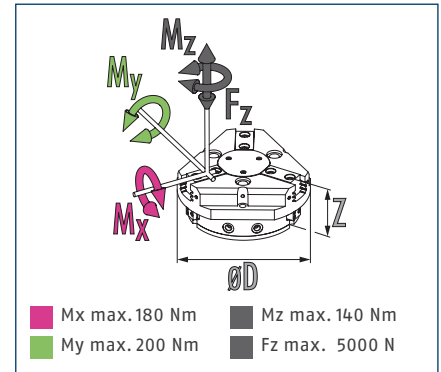
## Gripping force O.D. gripping



## Gripping force I.D. gripping



## Dimensions and maximum loads



① The indicated moments and forces are static values, apply for each base jaw and may appear simultaneously. Loads may additionally occur to the moment produced by the gripping force itself.

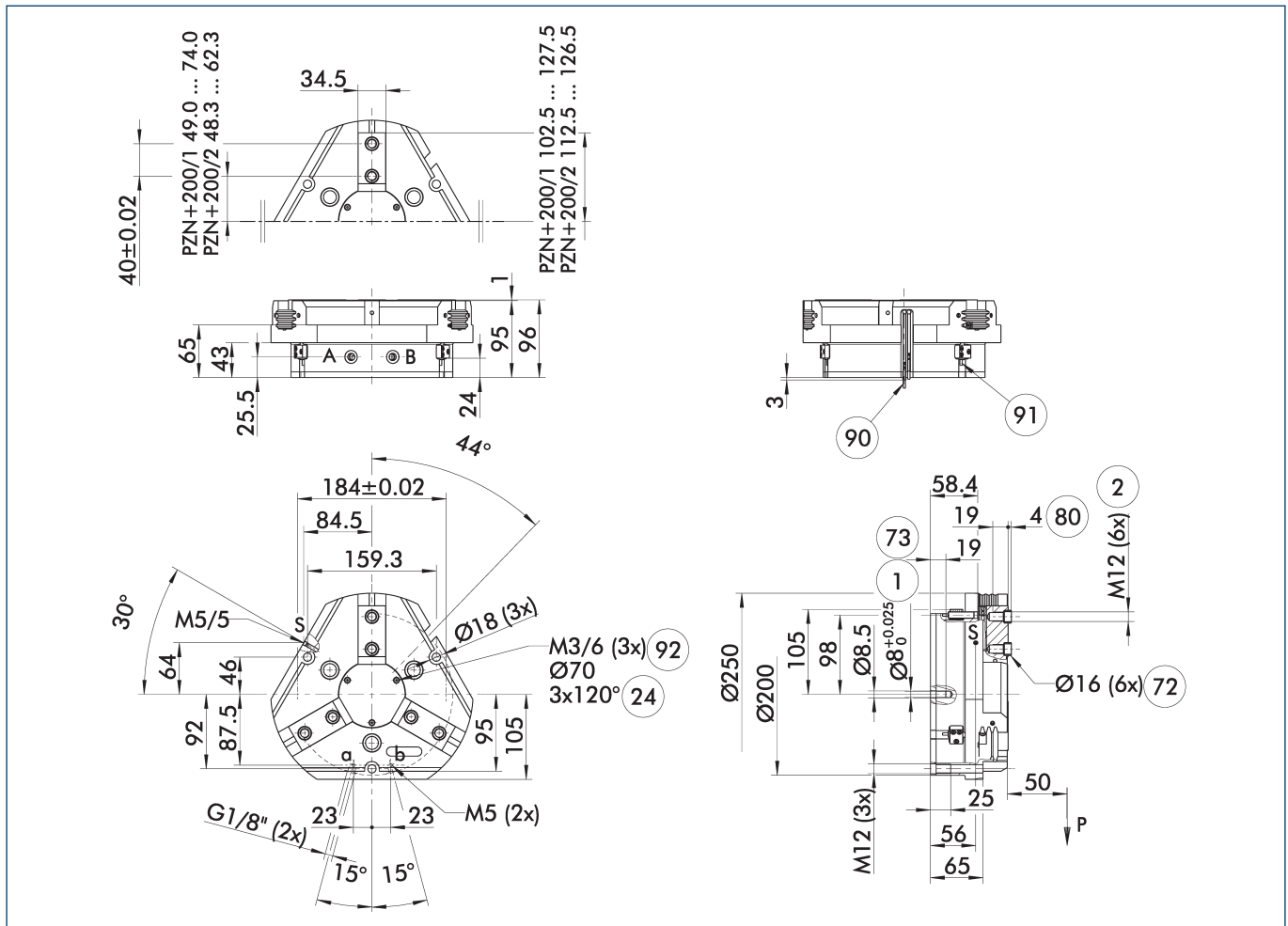
## Technical data

Description		PZN-plus 200-1	PZN-plus 200-2	PZN-plus 200-1-AS	PZN-plus 200-2-AS	PZN-plus 200-1-IS	PZN-plus 200-2-IS
ID		0303315	0303415	0303515	0303615	0303545	0303645
Stroke per jaw	[mm]	25	14	25	14	25	14
Closing/opening force	[N]	7100/7540	12700/13330	9800/-	17380/-	-/10500	-/18330
Min. spring force	[N]			2700	4680	2960	5000
Weight	[kg]	11	11	15.7	15.7	15.7	15.7
Recommended workpiece weight	[kg]	35.5	63.5	35.5	63.5	35.5	63.5
Fluid consumption double stroke	[cm³]	1040	1040	1725	1725	1725	1725
Min./nom./max. operating pressure	[bar]	2/6/8	2/6/8	4/6/6.5	4/6/6.5	4/6/6.5	4/6/6.5
Min./max. air purge pressure	[bar]	0.5/1	0.5/1	0.5/1	0.5/1	0.5/1	0.5/1
Closing/opening time	[s]	1.2/1.2	1.2/1.2	1/1.5	1/1.5	1.5/1	1.5/1
Closing/opening time with spring	[s]			1.50	1.50	1.50	1.50
Max. permissible finger length	[mm]	280	240	240	200	240	200
Max. permissible mass per finger	[kg]	6.5	6.5	6.5	6.5	6.5	6.5
IP protection class		40	40	40	40	40	40
Min./max. ambient temperature	[°C]	5/90	5/90	5/90	5/90	5/90	5/90
Repeat accuracy	[mm]	0.05	0.05	0.05	0.05	0.05	0.05
Dimensions Ø D x Z	[mm]	250 x 96	250 x 96	250 x 132	250 x 132	250 x 132	250 x 132
<b>Options and their characteristics</b>							
Dustproof version		37303315	37303415	37303515	37303615	37303545	37303645
IP protection class		64	64	64	64	64	64
Weight	[kg]	12	12	16.7	16.7	16.7	16.7
Corrosion-protected version		38303315	38303415	38303515	38303615	38303545	38303645
High-temperature version		39303315	39303415	39303515	39303615	39303545	39303645
Min./max. ambient temperature	[°C]	5/130	5/130	5/130	5/130	5/130	5/130
Precision version		0303345	0303445	0303495	0303595		

① It may take a few 100 gripping cycles until the full gripping force (as indicated in the data table) will be available.



## Main view



The drawing shows the gripper in the basic version with closed jaws, without dimensional consideration of the options described below.

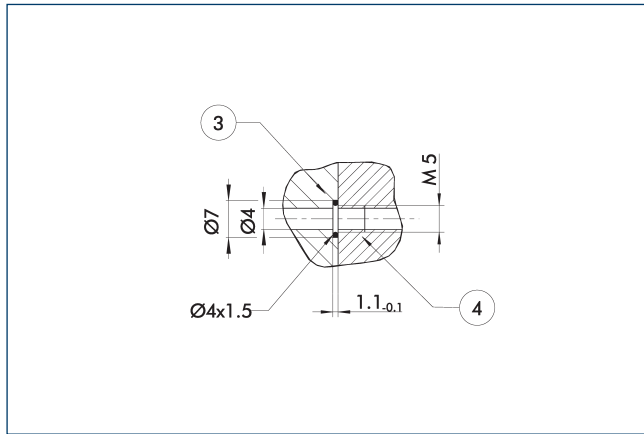
① The SDV-P pressure maintenance valve can also be used for I.D. or O.D. gripping alternatively or in addition to the spring-loaded, mechanical gripping force maintenance device (see catalog section on accessories).

- |  |  |
|--|--|
| A, a Main / direct connection, gripper opening | ⑦② Fit for centering sleeves                                 |
| B, b Main / direct connection, gripper closing | ⑦③ Fit for centering pins                                    |
| S Air purge connection                         | ⑧① Depth of the centering sleeve hole in the counter part    |
| ① Gripper connection                           | ⑨① Sensor MMS 22..   |
| ② Finger connection                            | ⑨① Sensor IN ...   |
| ②④ Bolt circle                                 | ⑨② Thread below the cover for fastening external attachments |

# PZN-plus 200

Universal gripper

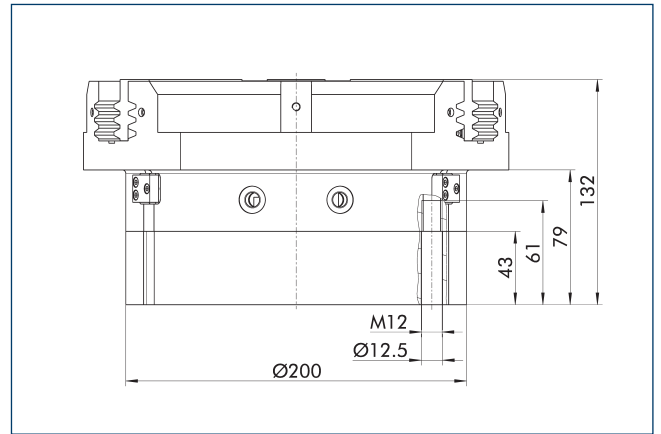
## Hose-free direct connection M5



- ③ Adapter
- ④ Grippers

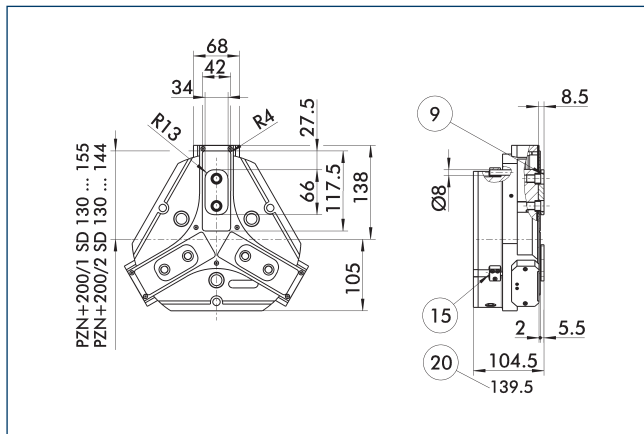
The direct connection is used for supplying compressed air without hoses. Instead, the pressure medium is fed through bore-holes in the mounting plate.

## Gripping force maintenance device AS / IS



The mechanical gripping force maintenance device ensures that a minimum clamping force will be applied even if there is a drop in pressure. This acts as closing force in the AS / S version, and as opening force in the IS version. Besides this, the gripping force maintenance device can be used to increase the gripping force or for single actuated gripping.

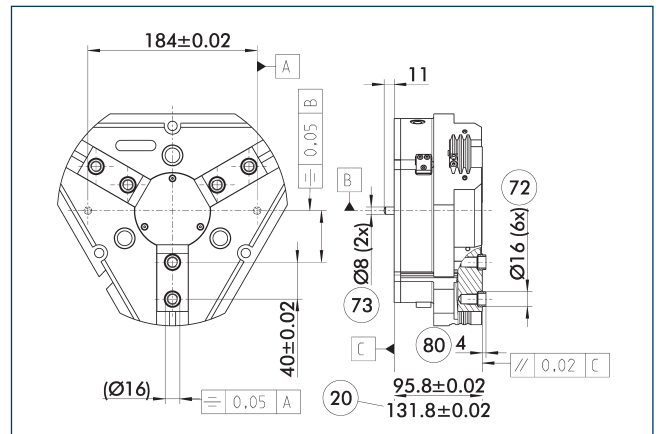
## Dustproof version



- ⑨ For mounting screw connection diagram, see basic version
- ⑮ Sealing bolt
- ⑳ For AS / IS version

The "dustproof" option increases the degree of protection against penetrating substances. The assembly diagram shifts by the height of the intermediate jaw. The finger length is still measured from the upper edge of the gripper housing.

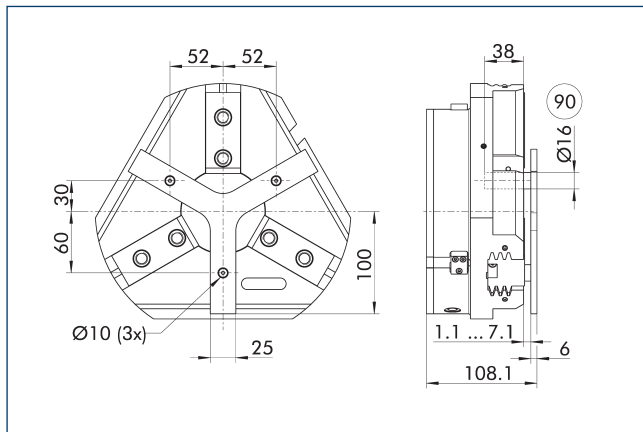
## Precision version



- ⑳ For AS / IS version
- ⑦③ Fit for centering pins
- ⑦② Fit for centering sleeves
- ⑧① Depth of the centering sleeve hole in the counter part

The indicated tolerances just refer to the variants of precision versions shown in the chart of technical specifications. All other variants of precision versions are available on request.

### Spring-loaded pressure piece



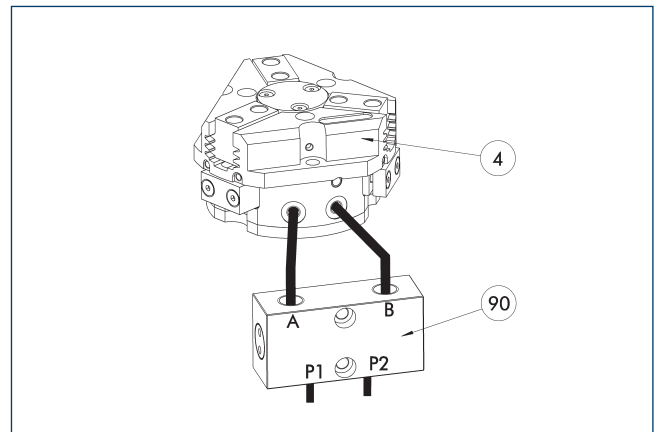
90 Guide pin

For spring-supported positioning of the workpiece against a stop after the gripper has opened. Especially developed for loading machines.

Description	ID	Stroke [mm]	Min. force [N]
Spring-loaded pressure piece			
A-PZN-plus/DPZ-plus 200	0303725	6	200

ⓘ The pressure piece cannot be combined with the dustproof option. Please contact us if you require a customized pressure piece.

### SDV-P pressure maintenance valve



4 Grippers

90 SDV-P pressure maintenance valve

The SDV-P pressure maintenance valve ensures in emergency STOP situations that the pressure in the piston chamber of pneumatic gripper, swivel, linear, and quick-change modules is temporarily maintained.

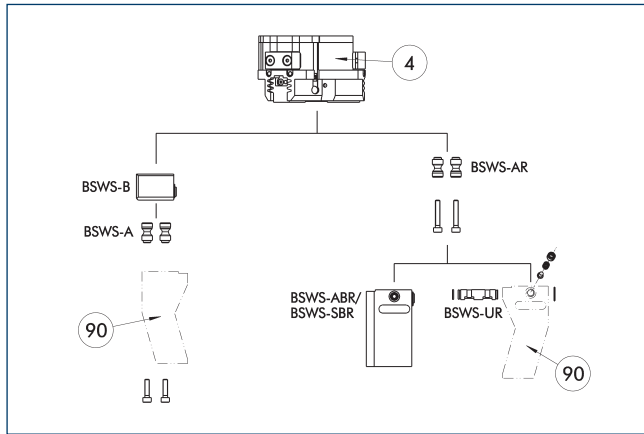
Description	ID	Recommended hose diameter [mm]
Pressure maintenance valve		
SDV-P 04	0403130	6
SDV-P 07	0403131	8
Pressure maintenance valve with air bleed screw		
SDV-P 04-E	0300120	6
SDV-P 07-E	0300121	8

ⓘ In order to achieve the specified closing and opening time for each gripper variant, the recommended hose diameter must be used. The direct allocation of the respective variant of the gripper for the respective SDV-P can be found at [schunk.com](http://schunk.com).

# PZN-plus 200

Universal gripper

## BSWS jaw quick-change jaw systems



④ Grippers                      ⑨0 Customized gripper fingers

There are various jaw quick-change systems available for the gripper. For detailed information, please refer to the corresponding product.

Description	ID	Scope of delivery
Quick-change jaw system base		
BSWS-B 200	0303033	1
Jaw quick-change system adapter pin		
BSWS-A 200	0303032	2

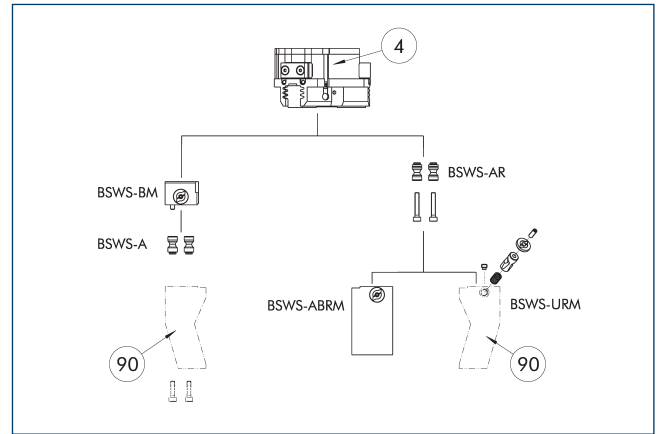
ⓘ Only systems that are listed in the table, can be used.

### Fields of application

Series	Size	Variant	Suitability
PZN-plus	200	-1 (6 bar)	■■■■■
PZN-plus	200	-1-AS / -1-IS (6 bar)	■■■■■
PZN-plus	200	-2 (6 bar)	■■■□
PZN-plus	200	-2-AS / -2-IS (6 bar)	■■■□
Legend			
■■■■■	Can be combined without restrictions		
■■■□	Use with restrictions (see loading limits)		
□□□□	cannot be combined		

The load limits for describing the application limits can be found in the catalog chapter of the corresponding accessories. If the operating pressure is higher than 6 bar, suitability for use above the application limits must be checked.

## Jaw quick-change system BSWS-M



④ Grippers                      ⑨0 Customized gripper fingers

There are various jaw quick-change systems available for the gripper. For detailed information, please refer to the corresponding product.

Description	ID	Scope of delivery
Quick-change jaw system base		
BSWS-BM 200	1419306	1
Jaw quick-change system adapter pin		
BSWS-A 200	0303032	2

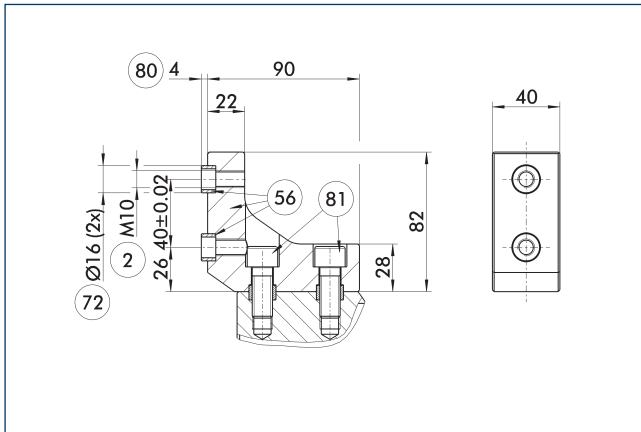
ⓘ Only systems that are listed in the table, can be used.

### Fields of application

Series	Size	Variant	Suitability
PZN-plus	200	-1 (6 bar)	■■■■■
PZN-plus	200	-1-AS / -1-IS (6 bar)	■■■■■
PZN-plus	200	-2 (6 bar)	■■■□
PZN-plus	200	-2-AS / -2-IS (6 bar)	■■■□
Legend			
■■■■■	Can be combined without restrictions		
■■■□	Use with restrictions (see loading limits)		
□□□□	cannot be combined		

The load limits for describing the application limits can be found in the catalog chapter of the corresponding accessories. If the operating pressure is higher than 6 bar, suitability for use above the application limits must be checked.

## ZBA-L-plus 200 intermediate jaws

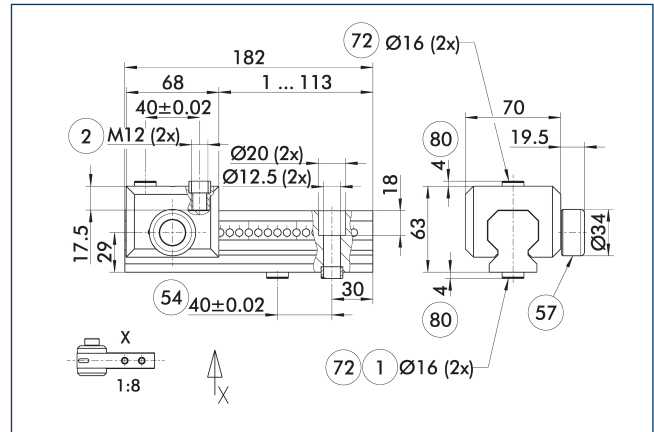


- ② Finger connection
- ⑤⑥ Included in the scope of delivery
- ⑦② Fit for centering sleeves
- ⑧① Depth of the centering sleeve hole in the counter part
- ⑧① Not included in the scope of delivery

Optionally intermediate jaws can be used, enabling direct connection and alignment of top jaws and various standard accessories in Z-direction.

Description	ID	Material	Finger interface	Scope of delivery
Intermediate jaw				
ZBA-L-plus 200	0311772	Aluminum	PGN-plus 200	1

## UZB 200 universal intermediate jaw



- ① Gripper connection
- ② Finger connection
- ⑤④ Optional right or left connection
- ⑤⑦ Locking
- ⑦② Fit for centering sleeves
- ⑧① Depth of the centering sleeve hole in the counter part

The drawing shows the UZB universal intermediate jaw. The fully removable UZB-S slide (can also be ordered separately) allows for a quick jaw change.

Description	ID	Grid dimension
Universal intermediate jaw		
UZB 200	0300047	7
Finger blank		
ABR-PGZN-plus 200	0300015	
SBR-PGZN-plus 200	0300025	
Slide for universal intermediate jaw		
UZB-S 200	5518275	7

## Fields of application

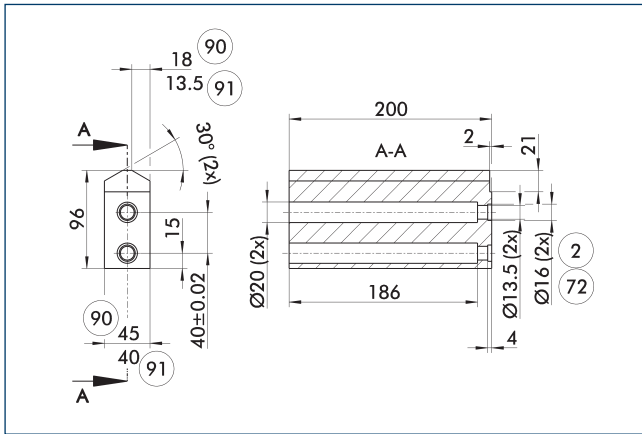
Series	Size	Variant	Suitability
PZN-plus	200	-1 (6 bar)	■■■■■
PZN-plus	200	-1-AS / -1-IS (6 bar)	■■■□□
PZN-plus	200	-2 (6 bar)	□□□□□
PZN-plus	200	-2-AS / -2-IS (6 bar)	□□□□□
Legend			
■■■■■	Can be combined without restrictions		
■■■□□	Use with restrictions (see loading limits)		
□□□□□	cannot be combined		

The load limits for describing the application limits can be found in the catalog chapter of the corresponding accessories. If the operating pressure is higher than 6 bar, suitability for use above the application limits must be checked.

# PZN-plus 200

Universal gripper

## Finger blanks ABR- / SBR-PGZN-plus 200

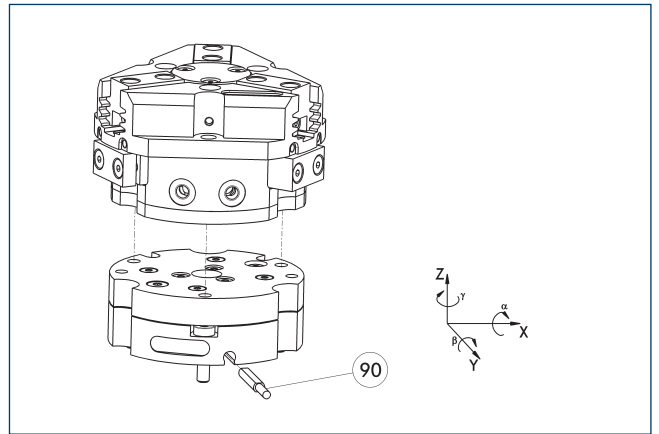


- ② Finger connection
- ⑦② Fit for centering sleeves
- ⑨① ABR-PGZN-plus
- ⑨① SBR-PGZN-plus

The drawing shows the finger blank which can be reworked by the customer.

Description	ID	Material	Scope of delivery
Finger blank			
ABR-PGZN-plus 200	0300015	Aluminum	1
SBR-PGZN-plus 200	0300025	Steel	1

## Tolerance compensation unit TCU



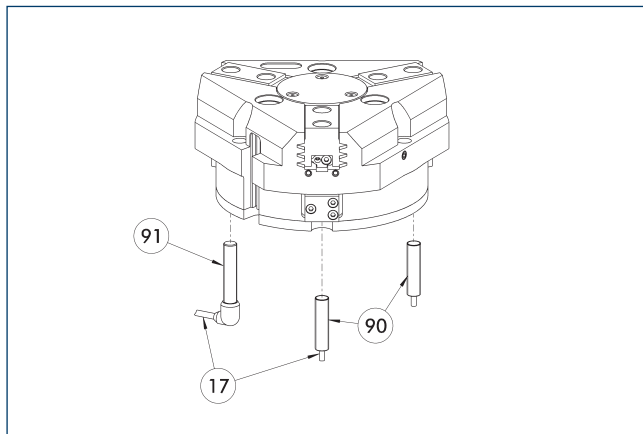
- ⑨① Monitoring of locking

Grippers can be directly mounted without an adapter plate. Tolerance compensation unit and gripper have an identical screw connection diagram. Therefore the tolerance compensation units can be assembled later. Please consider the additional assembly height of the tolerance compensation unit. For details please refer to our catalog robot accessories.

Description	ID	Locking	Deflection	Often combined
Compensation unit				
TCU-Z-200-3-MV	0324856	yes	±1°/±1°/±1°	●
TCU-Z-200-3-0V	0324857	no	±1°/±1°/±1°	



## Inductive Proximity Switches



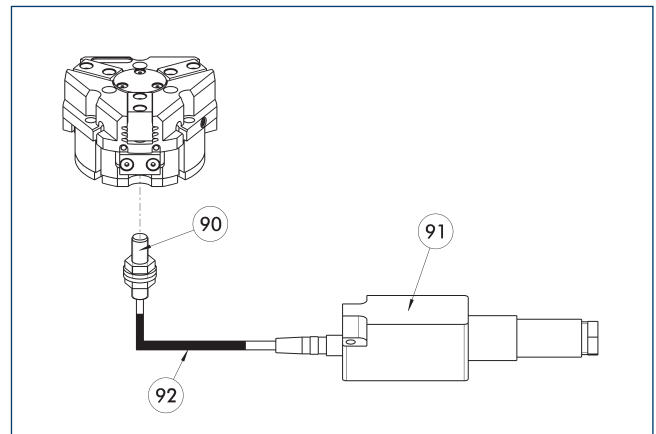
- 17 Cable outlet
- 90 Sensor IN ...
- 91 Sensor IN..-SA

Directly mounted end position monitoring.

Description	ID	Often combined
<b>Inductive proximity switches</b>		
IN 80-S-M12	0301578	
IN 80-S-M8	0301478	●
INK 80-S	0301550	
<b>Inductive proximity switch with lateral cable outlet</b>		
IN 80-S-M12-SA	0301587	
IN 80-S-M8-SA	0301483	●
INK 80-S-SA	0301566	
<b>Connection cables</b>		
KA BG08-L 3P-0300-PNP	0301622	●
KA BG08-L 3P-0500-PNP	0301623	
KA BG12-L 3P-0500-PNP	30016369	
KA BW08-L 3P-0300-PNP	0301594	
KA BW08-L 3P-0500-PNP	0301502	
KA BW12-L 3P-0300-PNP	0301503	
KA BW12-L 3P-0500-PNP	0301507	
<b>clip for plug/socket</b>		
CLI-M12	0301464	
CLI-M8	0301463	
<b>Cable extension</b>		
KV BG12-SG12 3P-0030-PNP	0301999	
KV BG12-SG12 3P-0060-PNP	0301998	
KV BW08-SG08 3P-0030-PNP	0301495	
KV BW08-SG08 3P-0100-PNP	0301496	
KV BW08-SG08 3P-0200-PNP	0301497	●
KV BW12-SG12 3P-0030-PNP	0301595	
KV BW12-SG12 3P-0100-PNP	0301596	
KV BW12-SG12 3P-0200-PNP	0301597	
<b>Sensor distributor</b>		
V2-M12	0301776	●
V2-M8	0301775	●
V4-M8	0301746	
V8-M8	0301751	

- ① Two sensors are required per unit for monitoring two positions. On option, extension cables and sensor distributors are available. Additional product variants of the sensor, and further information and technical data can be found in the catalog chapter sensor system.

## Flexible position sensor



- 90 FPS-S sensor
- 91 FPS-F5 evaluation electronic
- 92 Cable extension

Flexible position monitoring of up to five positions.

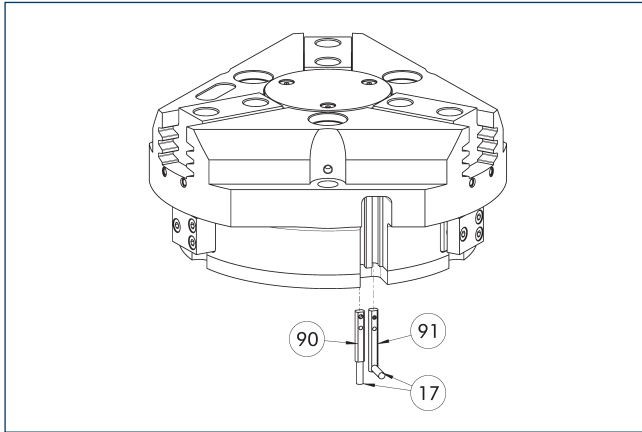
Description	ID	
<b>Attachment kit for FPS</b>		
AS-FPS-PGZN-plus 200-1	0301640	
AS-FPS-PGZN-plus 200-2	0301641	
<b>Sensor</b>		
FPS-S M8	0301704	
<b>Evaluation electronics</b>		
FPS-F5	0301805	
<b>Cable extension</b>		
KV BG08-SG08 3P-0050	0301598	
KV BG08-SG08 3P-0100	0301599	

- ① When using an FPS system, an FPS sensor (FPS-S) as well as an electronic processor (FPS-F5 / F5 T) are required for each gripper as well as a mounting kit (AS), if listed. Cable extensions (KV) are optionally available – see catalog chapter "Accessories."

# PZN-plus 200

Universal gripper

## Electronic magnetic switch MMS



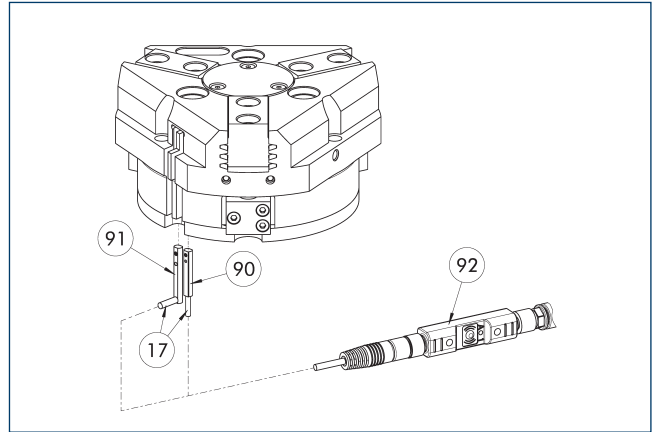
- ① Cable outlet
- ② Sensor MMS 22...-SA
- ③ Sensor MMS 22..

End position monitoring for mounting in the C-slot.

Description	ID	Often combined
<b>Electronic magnetic switch</b>		
MMS 22-S-M8-PNP	0301032	●
MMSK 22-S-PNP	0301034	
<b>Electronic magnetic switches with lateral cable outlet</b>		
MMS 22-S-M8-PNP-SA	0301042	●
MMSK 22-S-PNP-SA	0301044	
<b>Reed Switches</b>		
RMS 22-S-M8	0377720	●
<b>Connection cables</b>		
KA BG08-L 3P-0300-PNP	0301622	●
KA BG08-L 3P-0500-PNP	0301623	
KA BW08-L 3P-0300-PNP	0301594	
KA BW08-L 3P-0500-PNP	0301502	
<b>clip for plug/socket</b>		
CLI-M8	0301463	
<b>Wireless sensor system</b>		
RSS-T2	0377715	
RSS-T2-US/CA	0377717	
<b>Cable extension</b>		
KV BW08-SG08 3P-0030-PNP	0301495	
KV BW08-SG08 3P-0100-PNP	0301496	
KV BW08-SG08 3P-0200-PNP	0301497	●
<b>Sensor distributor</b>		
V2-M8	0301775	●
V4-M8	0301746	
V8-M8	0301751	

- ④ Two sensors are required per unit for monitoring two positions. On option, extension cables and sensor distributors are available. Additional product variants of the sensor, and further information and technical data can be found in the catalog chapter sensor system.

## Programmable magnetic switch MMS 22-PI1



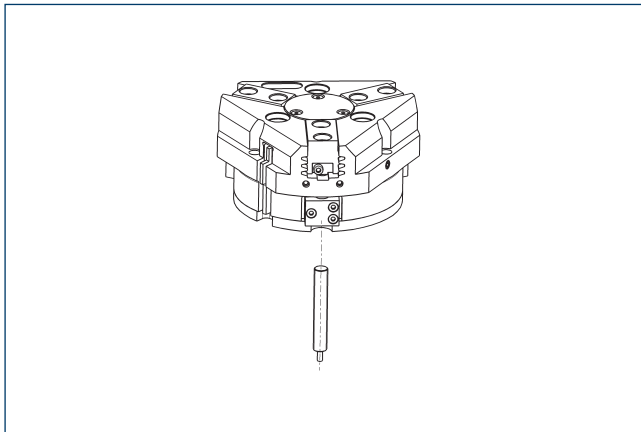
- ① Cable outlet
- ② Sensor MMS 22 ..-PI1...-SA
- ③ Sensor MMS 22 PI1-...
- ④ Connector teaching tool ST

Position monitoring with one programmable switching point per sensor, directly mountable in the C-slot. The electronics are built into the sensor. The cable outlet can be located either axially or laterally (MMS 22...-SA). Programmed using the plug teaching tool ST (to be ordered separately).

Description	ID	Often combined
<b>Programmable magnetic switch</b>		
MMS 22-PI1-S-M8-PNP	0301160	●
MMSK 22-PI1-S-PNP	0301162	
<b>Programmable magnetic switch with lateral cable outlet</b>		
MMS 22-PI1-S-M8-PNP-SA	0301166	●
MMSK 22-PI1-S-PNP-SA	0301168	
<b>Programmable magnetic switch with stainless steel housing</b>		
MMS 22-PI1-S-M8-PNP-HD	0301110	●
MMSK 22-PI1-S-PNP-HD	0301112	
<b>Plug teaching tool</b>		
ST-MMS 22-PI1-PNP	0301025	

- ④ Two sensors (closer/S) are required for each unit and extension cables are available as an option.

## APS-Z80 analog position sensor

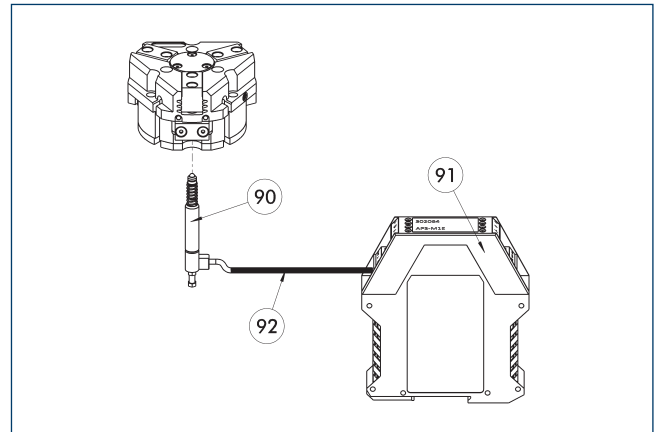


No-contact measuring, analog multi-position monitoring for any number of positions.

Description	ID	Often combined
<b>Mounting kit for APS-Z80</b>		
AS-APS-Z80-PGZN-plus 160-1/200-2/240-2	0302113	
AS-APS-Z80-PGZN-plus 200-1	0302115	
<b>Analog position sensor</b>		
APS-Z80-K	0302072	
APS-Z80-M8	0302070	●

① When using an APS system, one mounting kit (AS-APS-Z80) and one APS-Z80 sensor is required per gripper. The resolution of the sensor can be lower in the peripheral areas of the gripper. You can find further information on the product in the operating manual.

## APS-M1 analog position sensor



- ⑨⑩ APS-M1S sensor
- ⑨① APS-M1E electronic processor
- ⑨② APS-K extension cable

Analog multi position monitoring for any desired positions

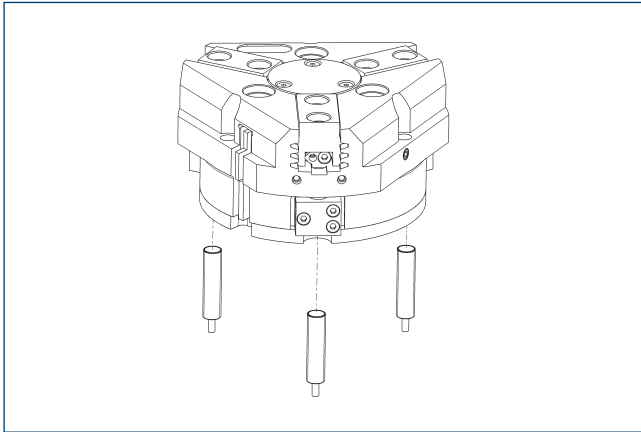
Description	ID	
<b>Mounting kit for APS-M1</b>		
AS-APS-M1-PGZN-plus 200-1/380-2	0302085	
AS-APS-M1-PGZN-plus 200-2	0302086	
<b>Analog position sensor</b>		
APS-M1S	0302062	
<b>Connection cables</b>		
APS-K0200	0302066	
APS-K0700	0302068	
<b>Evaluation electronics</b>		
APS-M1E	0302064	

① When using an APS system, for each gripper an attachment kit (AS-APS-M1), an APS-M1S sensor (incl. 3 m cable) as well as an electronics (APS-M1e) are required. An extension cable (APS-K) can be connected between the sensor and the electronics as an option. The max. cable length between the sensor and the electronics is 10 m, between the electronics and their control unit (PLC) it is max. 1 m.

# PZN-plus 200

Universal gripper

## Cylindrical reed switches



End position monitoring can be mounted with an attachment kit.

Description	ID	
Attachment kit for proximity switch		
AS-RMS 80 PGN/PZN-plus 160-380	0377727	
Reed Switches		
RMS 80-S-M8	0377721	

① Two sensors (closer/S) are required for each unit and extension cables are available as an option. This attachment kit needs to be ordered optionally as an accessory. Two mounting kits are required for each gripper. For sensor cables, note the minimum permissible bending radii. These are generally 35 mm.





**SCHUNK GmbH & Co. KG**  
**Spann- und Greiftechnik**

Bahnhofstr. 106 - 134  
D-74348 Lauffen/Neckar  
Tel. +49-7133-103-0  
Fax +49-7133-103-2399  
info@de.schunk.com  
schunk.com

Folgen Sie uns | *Follow us*

