



**One-stop
PURCHASE**
Perfect price-performance ratio products
**Professional
SERVICE**

Wet Abrasion Scrub Tester

Paint often become soiled especially near doorways, windows, and in work and play areas. Coated surfaces need to be tested for resistance to abrasion caused by a brush, sponge, or other means. The Wet Abrasion Scrub Tester can produce a repeatable, controlled condition to simulate everyday use or wear patterns.

BGD 526 Wet Abrasion Scrub Tester is the newest machine which is developed by Biuged . It can examine washability and related properties that affect the stain resistance of coatings. Detergent performance testing can also be determined in a reproducible manner.

It accords with standards such as ASTM D2486、ASTM D 3450、ASTM D 4213、ASTM D 4828、DIN EN 11330、EN. ISO 11998 etc.

Feature:

- ◆ Running speed can be set to meet requirements of different standards.
- ◆ With four-digit counter, start the machine and it will automatically be stopped when reaching set times.
- ◆ Compatible with a variety of abrasion pads to comply with different standards requirements, such as ISO, ASTM, DIN etc..
- ◆ Quickly and easily to load and unload testing samples and replacing abrasion head.
- ◆ Can work normally under different voltage and frequency
- ◆ With stable and uniform running speed because of Push-rod design
- ◆ Features two brush holders for side by side testing
- ◆ Long service life with hard and durable design
- ◆ The whole machine body is made of anodized aluminum, having stable working status, repeatable test results, no exception Even in the fastest speed of the stroke.
- ◆ With peristaltic pump design, control scrub medium flow accurately.

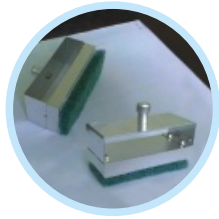


Scan for video

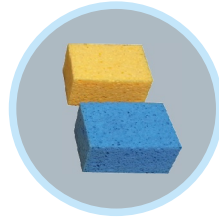




Nylon brush of ASTM D 2486



ISO 1998 Special brush



Sponges of ASTM D 3450、
ASTM D 4213 、 ASTM D 4828



Black plastic panel

Main Technical Parameters:

- ★ Specification of brush: Nylon brush bristles in 5/4 pattern extending 19 mm from block.
- ★ Weight of brush (including device holding brush) :
454 ± 10 g (ASTM D 2486) ; 135 ± 1g (ISO 11998)
- ★ Stroke Length: 300mm
- ★ Frequency of travel: 5 ~ 95 times/min (adjustable)
- ★ Range of count: 9999 times
- ★ Size of test plate: 430mm × 150mm × 0.03mm
- ★ Power of motor: 25W
- ★ Power: 110V ~ 220V; 50/60 Hz
- ★ Overall size: 590mm × 578mm × 320mm (L×W×H)
- ★ Net Weight: 26 KG
- ★ Capacity of Water Container: 1L

Ordering Information:

- BGD 526/1----Wet Abrasion Scrub Tester (ASTM D 2486)
- BGD 526/2----Wet Abrasion Scrub Tester (ISO 11998, no includes peristaltic pump)
- BGD 526/3----Wet Abrasion Scrub Tester (ASTM D 3450)
- BGD 526/4----Wet Abrasion Scrub Tester (ASTM D 4213)
- BGD 526/5----Wet Abrasion Scrub Tester (ASTM D 4828)
- BGD 526/6----Wet Abrasion Scrub Tester (DIN 53778)
- BGD 527----Wet Abrasion Scrub Tester (ASTM D 2486& ISO 11998)

Optional Accessories

- BGD 1187---- Abrasion Heads for ASTM D 3450 (Sponge+ Weights, total weigh is 1,500g)
- BGD 1188---- Abrasion Heads for ASTM D 4213 (Sponge+3M Scotch Brite handpads + Weights, total weigh is 470 ± 10g)
- BGD 1189---- Abrasion Heads for ASTM D 4828 (Sponge+ Weights, total weigh is 1000 ± 10g)
- BGD 1191----Abrasion Heads for DIN 53778 (Hog Bristle Brush+ Weights, total weigh is 250 ± 10g)
- BGD 1195----Abrasion Heads for ISO 11998 (3M Scotch Brite handpads + Weights, total weigh is 135 ± 1g)
- BGD 1196----Abrasion Heads for ASMT D 2486 (Nylon+ Weights, total weigh is 454 ± 10g)
- BGD 1197----Special Brush Carrier for Sponges Abrasion Heads
- BGD 1045 ----Abrasive pad (3M Scotch Brite®handpads) (ISO 11998; Size---- 90mm × 39mm; Pack of 50 pairs)
- BGD 1364----Special nylon brush (ASTM D 2486; 1 pair)
- BGD 1365/A----Hog Bristle Brush (1 pair)
- BGD 1510----Sponges (ASTM D 3450; 12 pcs)
- BGD 1511----Sponges (ASTM D 4213 & ASTM 4828; 12 pcs)
- BGD 2355----Brass Shim (165mm × 12.7mm × 0.25mm; pack of 10 pairs)
- BGD 2208----Black plastic panel (432mm × 165mm × 0.25mm; pack of 100 pcs)

Note: If choose BGD 1187, BGD 1188 and BGD 1189, then BGD 1197 is necessary.

