

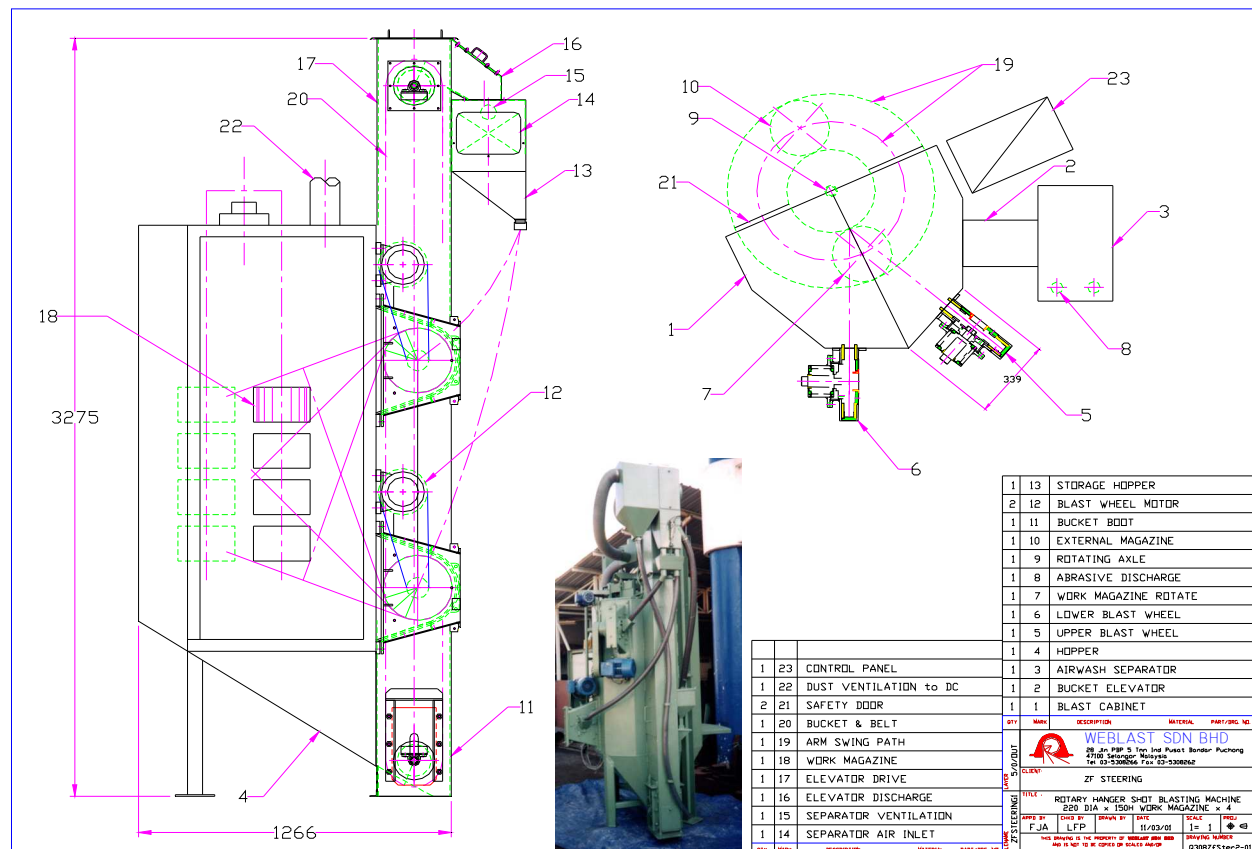
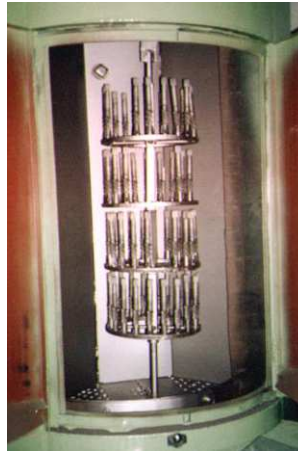
# Rotary Hanger Shot-Blast Machine

250 Dia x 600H Holder Cage for Motor Gear Pinion

## Main Specification:

1. Model: WBM RH250 Blasting Machine  
As Per Drawing No. Q308ZfSter2-01
2. Work Type: Gear Pinion of various size or other parts  
Pinion up for 20mm diameter x 150mm long  
Or Maximum envelop size 250D x 600L x 50kg
3. Batch Production:  
Gear holder cage x 4 levels = 80 pcs per batch  
Or 1 to 3 levels holder design
4. Average Production Rate to achieve SA 2.5 Std:  
- 15 mins blast cleaning time per batch  
- 5 minutes switch over time  
- Total 20 mins per 80 pcs production

This blast cleaning machine is custom designed for cleaning darken gear pinion surface due to heat treatment process, using fine steel shot abrasive only, complete with abrasive recovery, ventilation ducted outlet & batch production hangers. Dust collector, size 1000CFM is an optional supply either from us or by others.





## PRODUCT SPECIFICATIONS

Company No. 270183M

[www.weblast.com.my](http://www.weblast.com.my)

[www.weblast.co.id](http://www.weblast.co.id)

### **INDEX EXCHANGE ROTARY SHOT BLASTING MACHINE**

The type of endex exchange rotary hanger machine is capable of airless abrasive blasting of work envelope of <0.5m diameter, <1m high and weighing up to 70kg.

The machine is furnished with two belt drive reversible blades blast wheels. The abrasive recovery function is achieved by cabinet hopper, optional screw, a bucket elevator and an air-wash separator. The recovered abrasive is stored in the upper tank for continuous operation.

To prevent dust generated during the blasting process from escaping to the atmosphere, the system need to be ventilated by a dust collector supply by us or others.

#### **A. MODEL SELECTION TECHNICAL DATA**

Description	Model WBM RH250	Model WBM RH400
Maximum Work Size	0.25m Dia x 0.8m High x 50kg	0.4m Dia x 0.8mH x 70kg
Blasting Wheels	2 x 2.2kW	2 x 5.5 kW
Elevator gearmotor	0.4 kW	1.1 kW
Spinner gearmotor	0.2 kW	0.4 kW
Dust collector fan motor	1.5kW	3 kW
<i>TOTAL INSTALLED POWER</i>	6.5 kW	15.5 kW
Control panel & system components	ABB MCCB, Siemens/Schneider/Telemecanique contactors, switches & Omron control parts	
Abrasive volume for blasting	100Kg	400kg
Abrasive flow rate (total)	25kg/min	120 kg/min
Blast cleaning time	15 mins	3 mins
Ventilation requirement	1000 cfm	2000 cfm
Floor Space Requirement	1.5m x 2m	2m x 3m
Headroom Requirement	3.3 meters	4m
Machine weight	1,500 kg	2,000 kg

#### **B.) MAIN BLAST CABINET MATERIAL**

External housing material:	8t steel plate
Inner wall & roof abrasion resistant lining:	6t Manganese, up to 550HB
Direct hit wear resistant lining:	6t Manganese
Perforated inner cabinet flooring:	6t manganese